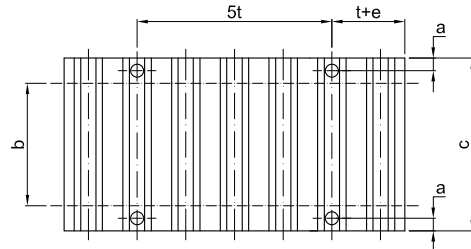
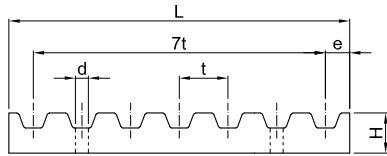


## Clamp plates

Clamp plates may be used as positive attachment of the belt ends in numerous applications in linear drives. Clamp plates must have the correct belt profile, guarantee a uniform clamping force on all the clamped belt surface and must be rigid.

For standard applications a minimum of 7 teeth in clamp is recommended. For use with timing belts with HPL cords, a minimum of 12 teeth in clamp is recommended.

EAGLE<sup>®</sup> clamp plates are available as semi finished product. Standard material for clamp plates is aluminium.



Type	a [mm]	d [mm]	e [mm]	L [mm]	H [mm]	Belt width [mm]							
						6	10	16	25	32	50	75	100
<b>C</b>													
T5	6	5,5	3,2	41,8	8	-	29	35	44	-	-	-	-
AT5	6	5,5	3,2	41,8	8	-	29	35	44	-	-	-	-
T10	8	9	5	80	15	-	-	41	50	57	75	100	125
AT10	8	9	5	80	15	-	-	41	50	57	75	100	125
T20	10	11	10	160	20	-	-	-	56	63	81	106	132
AT20	10	11	10	160	20	-	-	-	56	63	81	106	132

Type	a [mm]	d [mm]	e [mm]	L [mm]	H [mm]	Belt width [inch/100]						
						025	032	037	050	075	100	150
<b>C [mm]</b>												
XL	6	5,5	3,5	42,5	8	25,5	27	28,5	-	-	-	-
L	8	9	6	76,6	15	-	-	36	39	45	51,5	64
H	10	11	9	106,9	22	-	-	-	45	51	57,5	70

Type	a [mm]	d [mm]	e [mm]	L [mm]	H [mm]	Belt width [mm]							
						15	20	25	30	40	50	55	85
<b>C [mm]</b>													
5M	6	5,5	3,4	41,8	8	34	-	44	-	-	-	-	-
8M	8	9	5	66	15	40	45	-	55	-	75	-	110
14M	10	11	9	116	22	-	-	56	-	71	-	86	116

EAGLE Belts	Clamp plates					Belt width [mm]										
	Pitch	b	d	f	Length [mm]	H	12,5	25	16	25	32	50	35	52,5	70	105
							Clamp plate width [mm]									
EAGLE 5	6	5,5	8,5	47	7,5	30	-	-	-	-	-	-	-	-	-	-
	7					-	45	-	-	-	-	-	-	-	-	-
EAGLE 8	7,5	9	13	74	14,5	-	-	40	-	-	-	-	-	-	-	-
	8					-	-	-	50	57	75	-	-	-	-	
EAGLE 10	8	9	17	94	14,5	-	-	-	50	57	75	-	-	-	-	-
EAGLE 14	9,5	11	23	130	22	-	-	-	-	-	-	65	82,5	100	-	-
	10					-	-	-	-	-	-	-	-	-	-	136

