



Ammeraal Beltech Modular

Innovative belt and chain solutions
for every industry & application



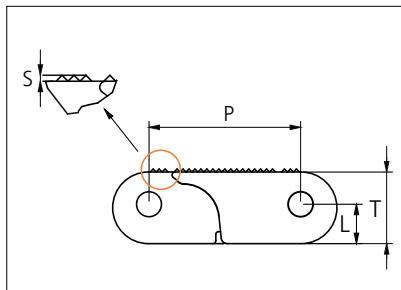
Content

uni CSB 8% Rough	page 3 - 6
uni CSB C	page 7 - 10
uni CSB Rough	page 11 - 14



Plastic Modular Belt

Series **uni CSB** Type **8% Rough**



Straight running belt
 Nominal pitch: 50.8 mm (2.00 in)
 Surface type: Rough (R11)
 Surface opening: 8%
 Backflex radius: 100 mm (3.94 in)
 Pin diameter: 8.0 mm (0.31 in)

Belt material & color	POM NL K	POX FR EG	PP DG	mm	in	mm	in		
Pin and lock material & color	PA6.6 N PP O			P (Nominal)	50.8	2.00	T	24.0	0.94
				L	13.2	0.52	S	1.0	0.04

Non standard material and color: See uni Material and Color Overview.
 Safety edges with orange or yellow edge links mounted on alternating pitches along both belt edges are optional.
 Alternative pin and lock systems and materials: Contact Customer Service.

Belt width		Permissible tensile force (Belt/pin material)								***Belt weight (Belt/pin material)				Min No drive sprocket per shaft	Number of wear strips (min no)	
		POM NL/PA66 POX-FR/PA66		POM NL/SS POX-FR/SS		PP/PA66		PP/SS		POM NL/PA66		PP/PA66			**Carry (pcs)	**Return (pcs)
mm	in	N	lbf	N	lbf	N	lbf	N	lbf	Kg/m	lb/ft	Kg/m	lb/ft			
153	6.0	13725	3085	15250	3428	7625	1714	7625	1714	2.9	1.92	1.8	1.24	2	2	2
305	12.0	27450	6171	30500	6856	15250	3428	15250	3428	5.7	3.83	3.7	2.48	3	3	2
458	18.0	41177	9257	45753	10285	22876	5143	22876	5143	8.6	5.75	5.5	3.72	4	4	2
610	24.0	54905	12343	61005	13714	30503	6857	30503	6857	11.4	7.67	7.4	4.96	5	5	3
763	30.0	68632	15429	76258	17143	38129	8571	38129	8571	14.3	9.58	9.2	6.20	6	6	3
915	36.0	82360	18514	91511	20572	45755	10286	45755	10286	17.1	11.50	11.1	7.44	7	7	4
1068	42.0	96087	21600	106764	24000	53382	12000	53382	12000	20.0	13.42	12.9	8.68	8	8	4
1220	48.0	109815	24686	122016	27429	61008	13715	61008	13715	22.8	15.33	14.8	9.92	9	9	5
1373	54.0	123542	27772	137269	30858	68634	15429	68634	15429	25.7	17.25	16.6	11.16	10	10	5
1525	60.0	137269	30858	152522	34287	76261	17143	76261	17143	28.5	19.17	18.5	12.40	11	11	6
1678	66.1	150997	33944	167774	37716	83887	18858	83887	18858	31.4	21.08	20.3	13.64	12	12	6
1830	72.1	164724	37030	183027	41144	91514	20572	91514	20572	34.2	23.00	22.1	14.88	13	13	7

Additional standard belt widths are available in steps of 152.5 mm (6.00 in.) Additional non-standard belt widths are available in steps of 25.4 mm (1.00 in)

2898	114.1	260820	58632	289800	65147	144900	32574	144900	32574	54.2	36.42	35.1	23.57	20	20	10
------	-------	--------	-------	--------	-------	--------	-------	--------	-------	------	-------	------	-------	----	----	----

Additional standard belt widths are available in steps of 152.5 mm (6.00 in.) Additional non-standard belt widths are available in steps of 25.4 mm (1.00 in)

3965	156.1	356850	80220	396500	89133	198250	44567	198250	44567	74.1	49.83	48.0	32.24	27	27	14
------	-------	--------	-------	--------	-------	--------	-------	--------	-------	------	-------	------	-------	----	----	----

General belt tolerance is +0/-0.4% at 23°C/73°F and 50% RH. For exact belt width contact Customer Service. Non standard belt width on request.

The belt width in POX FR is 1.0 % wider than the belt width in the table

*Max. Load per Drive Sprocket. Belt material: NL 6000 N (1349 lbf), PP 4000 N (899 lbf), POX FR 6000 N (1349 lbf)

**Max. Spacing between wear strips. Carry: 152 mm (6 in.); Return: 304 mm (12 in.)

***The weight of the belt with SS pins is 6.7 kg/m² (0.42 lb/ft²) higher than with PA66 pins

****The weight in POX FR is approximately 12 % lower than the weight of NLAS

= Single Link



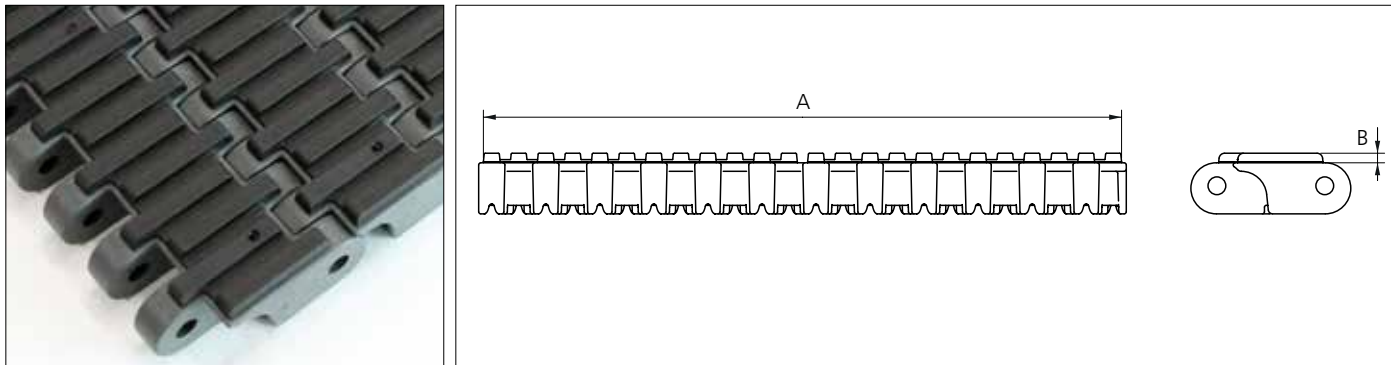
STANDARD

STRAIGHT RUNNING

PITCH 50.8 MM/2.00 IN

Accessories

Rubber Top

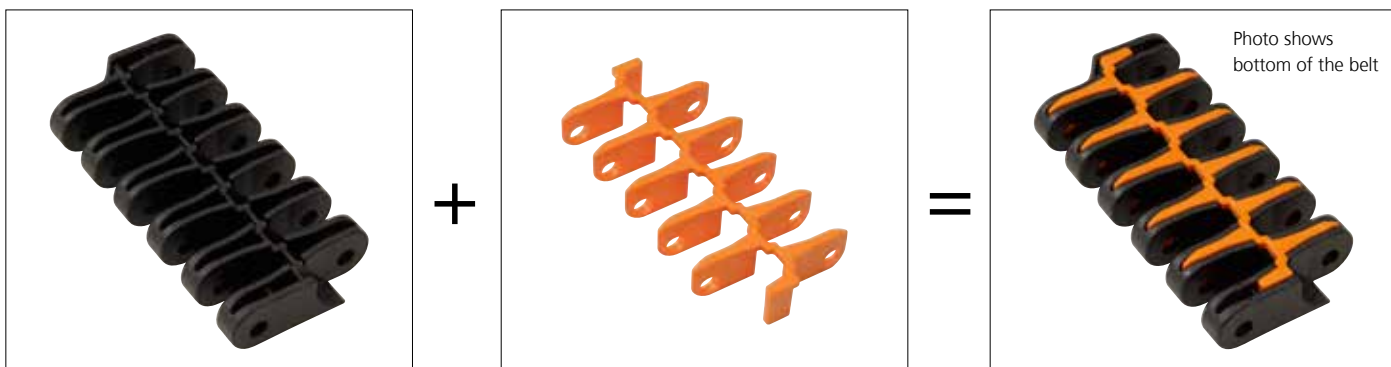


Type	Belt material & color	Rubber material & color	A		B		Link size	Width	
			mm	in	mm	in		mm	in
Flat	PP DG	03 K	300.0	11.81	4.5	0.18	K1200	304.8	12.00

Backflex radius when flights are used: 200 mm (7.87 in).

Accessories

Top/Bottom Insert



Type	Insert material & color	Weight	
		kg/m ²	lb/ft ²
Wheel Plate	POM DK O	4.7	0.97

Contact area/wear surface of belt will increase from 24% to 47% by the use of inserts.

Accessories

Top/Bottom Insert

EC insert in uni CSB 8% Rough type can be built in to uni CSB C to create an electrical conductive belt.

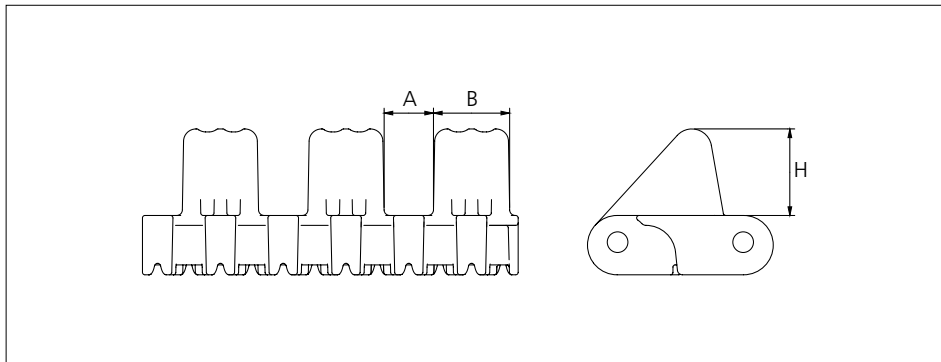


Type	Insert material & color	Weight	
		kg/m ²	lb/ft ²
Electrical Conductive	POX-FREC K	5.3	1.09

Contact area/wear surface of belt will increase from 24% to 47% by the use of inserts.
POX-FREC holds a surface resistivity of 1x10³ Ohm according to IEC 60093/ASTM D257.

Accessories

Flight

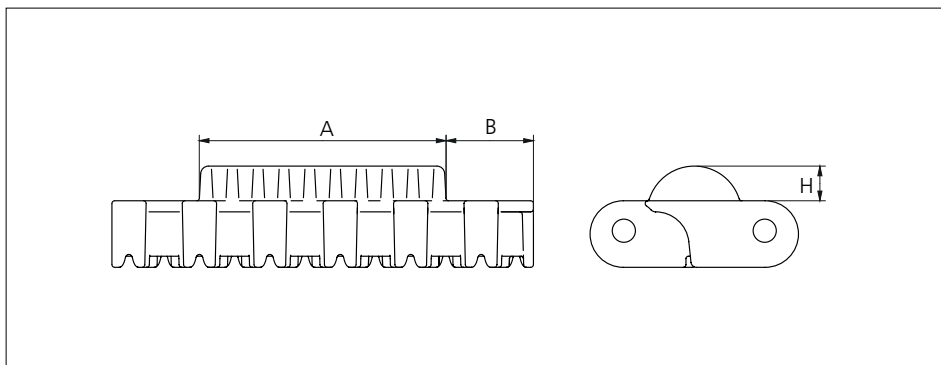


Type	Flight material & color	A		B		H		Link size	Width	
		mm	in	mm	in	mm	in		mm	in
Car pusher	POM NL O	20.0	0.79	31.0	1.22	35.0	1.38	K600	152.4	6.00

Backflex radius when flights are used: 200 mm (7.87 in).

Accessories

Flight



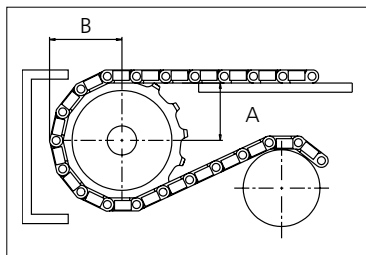
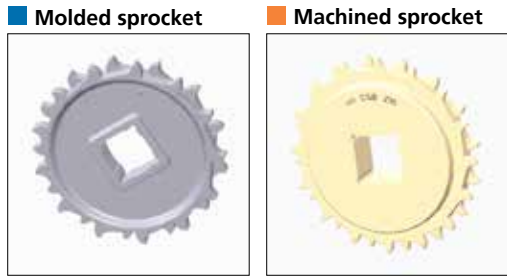
Type	Flight material & color	A		B		H		Link size	Width	
		mm	in	mm	in	mm	in		mm	in
Curved Flight	POM NL Y	89.0	3.50	31.5	1.24	12.5	0.49	K600	152.4	6.00

Sprocket

No of teeth	Bore size							Overall diameter		Pitch-diameter		Hub-diameter		*A-dimension		B-dimension		Single row/Two way	Double row/Two way	Molded PA6 LG	Machined PA6 N
	Pilot bore	in	1.57	2.36	2.50	3.54	3.54														
	mm	40.0	60.0	63.5	90.0	120.0	mm	in	mm	in	mm	in	mm	in							
Z12	x			■		■		197.3	7.77	197.0	7.76	150.0	5.91	82.0	3.23	109.4	4.31		x	x	
Z16	x			■		■	■	263	10.35	261.4	10.29	200.0	7.87	115.0	4.53	141.5	5.57		x	x	x

*A-dimension for automotive applications use A = (B-23.0 mm/0.91 in).

Non standard material and color:
See uni Material and Color Overview.



Other sprocket sizes are available upon request.
Two-part sprockets are available upon request.
Round bores are always delivered with keyway.
Other bore sizes are available upon request.
uni Retainer Rings: See uni Retainer Ring data sheet
Width of single tooth = 10.0 mm (0.39 in)
Width of sprocket = 50.0 mm (1.98 in)

Max load per sprocket shown does not take bore size into account.
Please also ensure that sufficient size shaft is chosen for corresponding load.

For correct sprocket position: See uni Assembly Instructions for uni CSB.
For more detailed sprocket information, contact Customer Service.

uni CSB 8% Rough/151218



Expert advice, quality solutions and local service for all your belting needs
www.ammeraalbeltech.com

Ammeraal Beltech Modular A/S
Hjulgagervej 21
DK-7100 Vejle

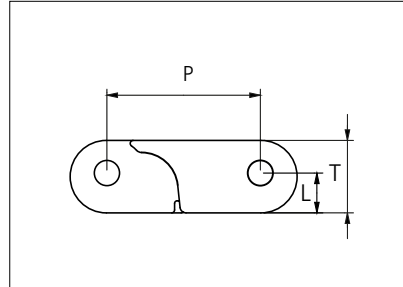
T +45 7572 3100
F +45 7572 3348
admin@unichains.com
www.unichains.com

This information is subject to alteration due to continuous development. Ammeraal Beltech will not be held liable for the incorrect use of the above stated information. This information replaces previous information. All activities performed and services rendered by Ammeraal Beltech are subject to general terms and conditions of sale and delivery, as applied by its operating companies.



Plastic Modular Belt

Series **uni CSB** Type **C**



Straight running belt
 Nominal pitch: 50.8 mm (2.00 in)
 Surface type: Flat
 Surface opening: Closed
 Backflex radius: 100 mm (3.94 in)
 Pin diameter: 8.0 mm (0.31 in)

STANDARD

Belt material & color	POM NL K	PP DG	mm	in	mm	in		
	Pin and lock material & color	PA6.6 N / PP O		P (Nominal)	50.8	2.00	T	24.0
L		13.2	0.52	-	-	-	-	-

Non standard material and color: See uni Material and Color Overview.
 Safety edges with orange or yellow edge links mounted on alternating pitches along both belt edges are optional.
 Alternative pin and lock systems and materials: Contact Customer Service.

Belt width		Permissible tensile force (Belt/pin material)						Belt weight (Belt/pin material)						**Min No drive sprocket per shaft	Number of wear strips (min no)	
		POM NL/PA66		POM NL/SS		PP/PA66		POM NL/PA66		POM NL/SS		PP/PA66			**Carry (pcs)	**Return (pcs)
mm	in	N	lbf	N	lbf	N	lbf	Kg/m	lb/ft	Kg/m	lb/ft	Kg/m	lb/ft			
102	4.0	9180	2064	10200	2293	n/a	n/a	1.9	1.28	2.6	1.74	n/a	n/a	2	2	2
153	6.0	13770	3095	15300	3439	7956	1789	2.9	1.92	3.9	2.61	1.9	1.24	2	2	2
305	12.0	27450	6171	30500	6856	15860	3565	5.7	3.83	7.7	5.21	3.7	2.48	3	3	2
458	18.0	41220	9266	45800	10296	23816	5354	8.6	5.76	11.6	7.82	5.5	3.72	4	4	2
610	24.0	54900	12342	61000	13713	31720	7131	11.4	7.67	15.5	10.41	7.4	4.96	5	5	3
763	30.0	68670	15437	76300	17152	39676	8919	14.3	9.59	19.4	13.02	9.2	6.20	6	6	3
915	36.0	82350	18512	91500	20569	47580	10696	17.1	11.50	23.2	15.62	11.1	7.44	7	7	4
1068	42.0	96120	21608	106800	24009	55536	12484	20.0	13.42	27.1	18.23	12.9	8.68	8	8	4
1220	48.0	109800	24683	122000	27426	63440	14261	22.8	15.33	31.0	20.83	14.8	9.92	9	9	5
1373	54.1	123570	27779	137300	30865	71396	16050	25.7	17.25	34.9	23.44	16.6	11.16	10	10	5
1525	60.0	137250	30854	152500	34282	79300	17827	28.5	19.17	38.7	26.03	18.5	12.40	11	11	6
1678	66.1	151020	33949	167800	37721	87256	19615	31.4	21.09	42.6	28.64	20.3	13.65	12	12	6

Additional standard belt widths are available in steps of 152.5 mm (6.00 in). Additional non-standard belt widths are available in steps of 25.4 mm (1.00 in).

2898	114.1	260820	58632	289800	65147	150696	33876	54.2	36.42	73.6	49.47	35.1	23.57	20	20	10
------	-------	--------	-------	--------	-------	--------	-------	------	-------	------	-------	------	-------	----	----	----

Additional standard belt widths are available in steps of 152.5 mm (6.00 in). Additional non-standard belt widths are available in steps of 25.4 mm (1.00 in).

4880	192.1	439200	98732	488000	109702	253760	57045	91.3	61.33	124.0	83.30	59.0	39.68	33	33	17
------	-------	--------	-------	--------	--------	--------	-------	------	-------	-------	-------	------	-------	----	----	----

General belt tolerance is +0/-0.4% at 23°C/73°F and 50% RH. For exact belt width contact Customer Service. Non standard belt width on request.

**Max. Load per Drive Sprocket. Belt material: NL 6000 N (1349 lbf), PP 4000 N (899 lbf)

***Max. Spacing between wear strips, Carry: 152 mm (6 in); Return: 304 mm (12 in).

□ = Single Link

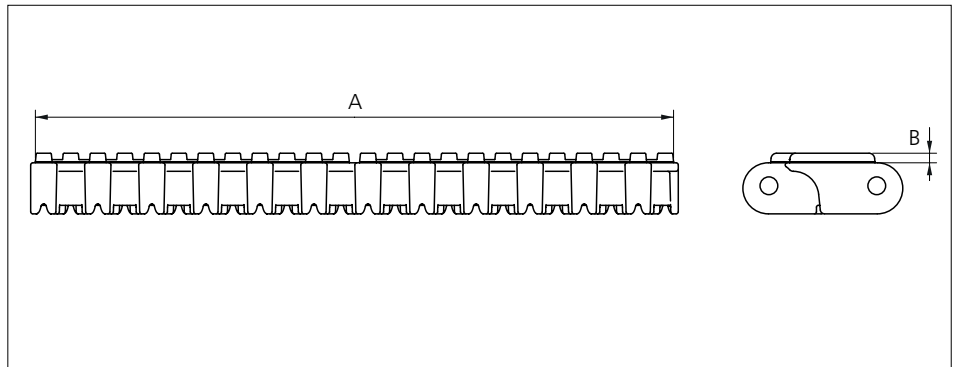
STRAIGHT RUNNING

PITCH 50.8 MM/2.00 IN



Accessories

Rubber Top



Type	Belt material & color	Rubber material & color	A		B		Link size	Width	
			mm	in	mm	in		mm	in
Flat	PP DG	03 K	300.0	11.81	4.5	0.18	K1200	304.8	12.00

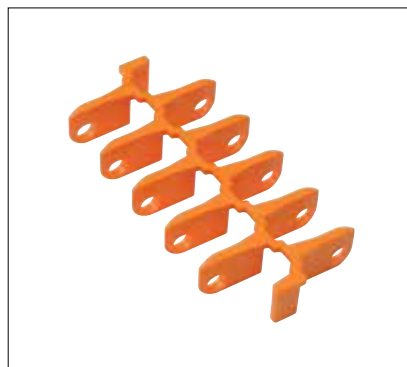
Backflex radius when flights are used: 200 mm (7.87 in).

Accessories

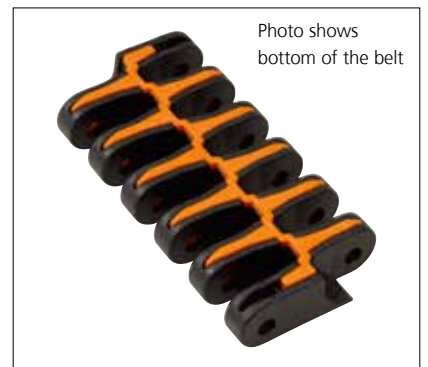
Top/Bottom Insert



+



=



Type	Insert material & color	Weight	
		kg/m ²	lb/ft ²
Wheel Plate	POM DK O	4.7	0.97

Contact area/wear surface of belt will increase from 24% to 47% by the use of inserts.

Accessories

Top/Bottom Insert

EC insert in uni CSB 8% Rough type can be built in to uni CSB C to create an electrical conductive belt.



+



=

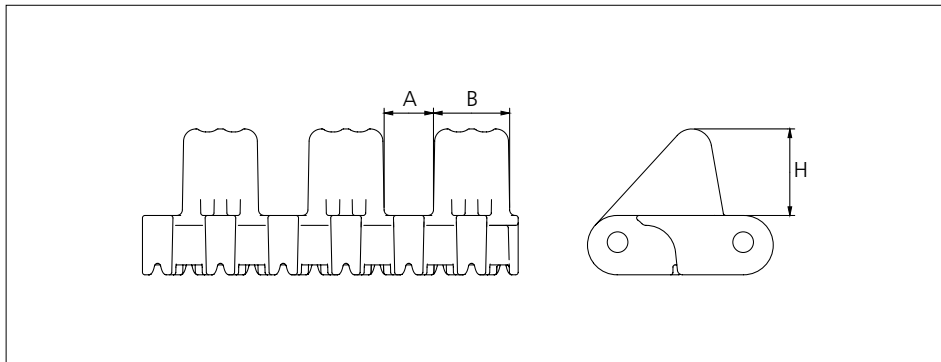


Type	Insert material & color	Weight	
		kg/m ²	lb/ft ²
Electrical Conductive	POX-FREC K	5.3	1.09

Contact area/wear surface of belt will increase from 24% to 47% by the use of inserts.
POX-FREC holds a surface resistivity of 1x10³ Ohm according to IEC 60093/ASTM D257.

Accessories

Flight

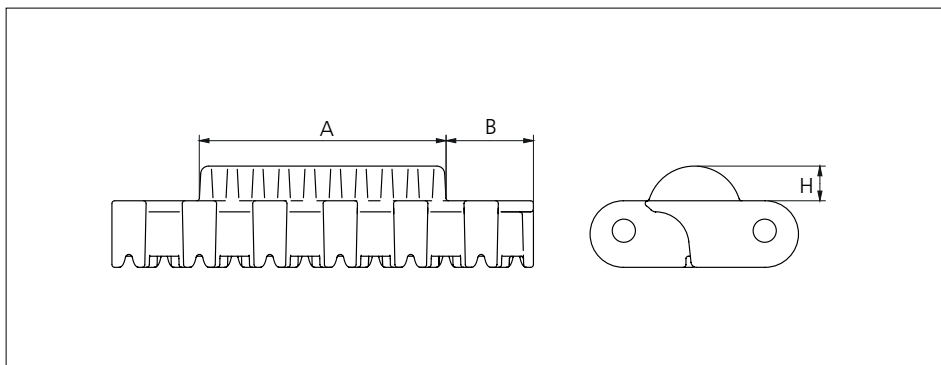


Type	Flight material & color	A		B		H		Link size	Width	
		mm	in	mm	in	mm	in		mm	in
Car pusher	POM NL O	20.0	0.79	31.0	1.22	35.0	1.38	K600	152.4	6.00

Backflex radius when flights are used: 200 mm (7.87 in).

Accessories

Flight



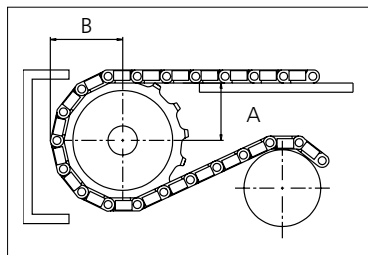
Type	Flight material & color	A		B		H		Link size	Width	
		mm	in	mm	in	mm	in		mm	in
Curved Flight	POM NL Y	89.0	3.50	31.5	1.24	12.5	0.49	K600	152.4	6.00

Sprocket

No of teeth	Bore size						Overall diameter		Pitch diameter		Hub diameter		*A-dimension		B-dimension		Single row/Two way	Double row/Two way	Molded PA6 LG	Machined PA6 N
	Pilot bore	in	1.57	2.36	2.50	3.54														
	mm	40.0	60.0	63.5	90.0	120.0	mm	in	mm	in	mm	in	mm	in						
Z12	x		■		■		197.3	7.77	197.0	7.76	150.0	5.91	82.0	3.23	109.4	4.31		x	x	
Z16	x		■		■	■	263	10.35	261.4	10.29	200.0	7.87	115.0	4.53	141.5	5.57		x	x	x

*A-dimension for automotive applications use A = (B-23.0 mm/0.91 in).

Non standard material and color:
See uni Material and Color Overview.



Other sprocket sizes are available upon request.
Two-part sprockets are available upon request.
Round bores are always delivered with keyway.
Other bore sizes are available upon request.
uni Retainer Rings: See uni Retainer Ring data sheet
Width of single tooth = 10.0 mm (0.39 in)
Width of sprocket = 50.0 mm (1.98 in)

Max load per sprocket shown does not take bore size into account.
Please also ensure that sufficient size shaft is chosen for corresponding load.

For correct sprocket position: See uni Assembly Instructions for uni CSB.
For more detailed sprocket information, contact Customer Service.



Expert advice, quality solutions and local service for all your belting needs
www.ammeraalbeltech.com

Ammeraal Beltech Modular A/S
Hjulmagervej 21
DK-7100 Vejle

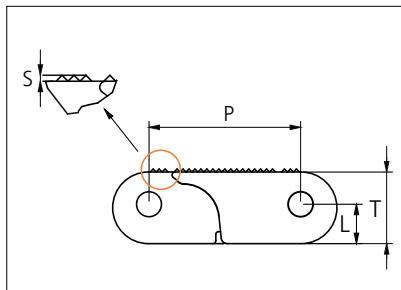
T +45 7572 3100
F +45 7572 3348
admin@unichains.com
www.unichains.com

This information is subject to alteration due to continuous development. Ammeraal Beltech will not be held liable for the incorrect use of the above stated information. This information replaces previous information. All activities performed and services rendered by Ammeraal Beltech are subject to general terms and conditions of sale and delivery, as applied by its operating companies.



Plastic Modular Belt

Series **uni CSB** Type **Rough**



Straight running belt
 Nominal pitch: 50.8 mm (2.00 in)
 Surface type: Rough (R11)
 Surface opening: Closed
 Backflex radius: 100 mm (3.94 in)
 Pin diameter: 8.0 mm (0.31 in)

Belt material & color	POM NL K	POX-FR EG	PP DG	mm	in	mm	in		
Pin and lock material & color	PA6.6 N PP O			P (Nominal)	50.8	2.00	T	24.0	0.94
				L	13.2	0.52	S	1.0	0.04

Non standard material and color: See uni Material and Color Overview.
 Safety edges with orange or yellow edge links mounted on alternating pitches along both belt edges are optional.
 Alternative pin and lock systems and materials: Contact Customer Service.

Belt width		Permissible tensile force (Belt/pin material)								***Belt weight (Belt/pin material)				Min No drive sprocket per shaft	Number of wear strips (min no)	
		POM NL/PA66 POX-FR/PA66		POM NL/SS POX-FR/SS		PP/PA66		PP/SS		POM NL/PA66		PP/PA66			**Carry (pcs)	**Return (pcs)
mm	in	N	lbf	N	lbf	N	lbf	N	lbf	Kg/m	lb/ft	Kg/m	lb/ft			
153	6.0	13725	3085	15250	3428	7625	1714	7625	1714	2.9	1.92	1.8	1.24	2	2	2
305	12.0	27450	6171	30500	6856	15250	3428	15250	3428	5.7	3.83	3.7	2.48	3	3	2
458	18.0	41177	9257	45753	10285	22876	5143	22876	5143	8.6	5.75	5.5	3.72	4	4	2
610	24.0	54905	12343	61005	13714	30503	6857	30503	6857	11.4	7.67	7.4	4.96	5	5	3
763	30.0	68632	15429	76258	17143	38129	8571	38129	8571	14.3	9.58	9.2	6.20	6	6	3
915	36.0	82360	18514	91511	20572	45755	10286	45755	10286	17.1	11.50	11.1	7.44	7	7	4
1068	42.0	96087	21600	106764	24000	53382	12000	53382	12000	20.0	13.42	12.9	8.68	8	8	4
1220	48.0	109815	24686	122016	27429	61008	13715	61008	13715	22.8	15.33	14.8	9.92	9	9	5
1373	54.0	123542	27772	137269	30858	68634	15429	68634	15429	25.7	17.25	16.6	11.16	10	10	5
1525	60.0	137269	30858	152522	34287	76261	17143	76261	17143	28.5	19.17	18.5	12.40	11	11	6
1678	66.1	150997	33944	167774	37716	83887	18858	83887	18858	31.4	21.08	20.3	13.64	12	12	6
1830	72.1	164724	37030	183027	41144	91514	20572	91514	20572	34.2	23.00	22.1	14.88	13	13	7

Additional standard belt widths are available in steps of 152.5 mm (6.00 in.) Additional non-standard belt widths are available in steps of 25.4 mm (1.00 in)

2898	114.1	260820	58632	289800	65147	144900	32574	144900	32574	54.2	36.42	35.1	23.57	20	20	10
------	-------	--------	-------	--------	-------	--------	-------	--------	-------	------	-------	------	-------	----	----	----

Additional standard belt widths are available in steps of 152.5 mm (6.00 in.) Additional non-standard belt widths are available in steps of 25.4 mm (1.00 in)

3965	156.1	356850	80220	396500	89133	198250	44567	198250	44567	74.1	49.83	48.0	32.24	27	27	14
------	-------	--------	-------	--------	-------	--------	-------	--------	-------	------	-------	------	-------	----	----	----

General belt tolerance is +0/-0.4% at 23°C/73°F and 50% RH. For exact belt width contact Customer Service. Non standard belt width on request.

Belt widths in POX FR is 1.0 % wider than the belt widths in the table above.

*Max. Load per Drive Sprocket. Belt material: NL 6000 N (1349 lbf). PP 4000 N (899 lbf). POX FR 6000 N (1349 lbf).

**Max. Spacing between wear strips. Carry: 152 mm (6 in); Return: 304 mm (12 in).

***The weight of the belt with SS pins is 6.7 kg/m² (0.42 lb/ft²) higher than with PA66 pins.

***The weight in POX FR is approximately 12% lower than the weight of NL.

= Single Link



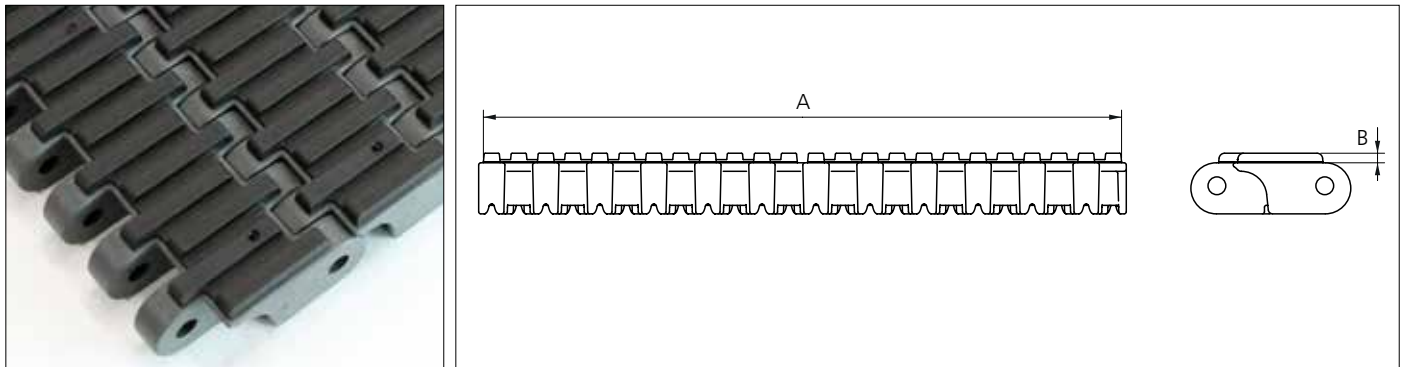
STANDARD

STRAIGHT RUNNING

PITCH 50.8 MM/2.00 IN

Accessories

Rubber Top

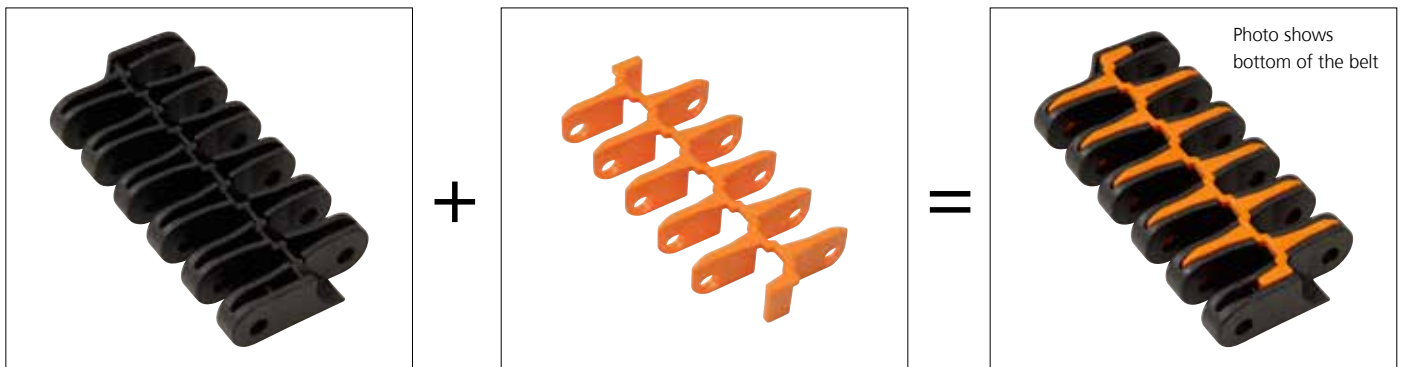


Type	Belt material & color	Rubber material & color	A		B		Link size	Width	
			mm	in	mm	in		mm	in
Flat	PP DG	03 K	300.0	11.81	4.5	0.18	K1200	304.8	12.00

Backflex radius when flights are used: 200 mm (7.87 in).

Accessories

Top/Bottom Insert



Type	Insert material & color	Weight	
		kg/m ²	lb/ft ²
Wheel Plate	POM DK O	4.7	0.97

Contact area/wear surface of belt will increase from 24% to 47% by the use of inserts.

Accessories

Top/Bottom Insert

EC insert in uni CSB 8% Rough type can be built in to uni CSB C to create an electrical conductive belt.

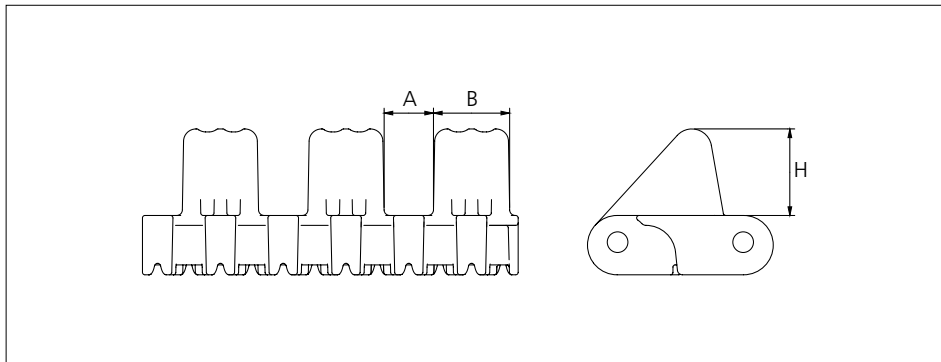


Type	Insert material & color	Weight	
		kg/m ²	lb/ft ²
Electrical Conductive	POX-FREC K	5.3	1.09

Contact area/wear surface of belt will increase from 24% to 47% by the use of inserts.
POX-FREC holds a surface resistivity of 1x10³ Ohm according to IEC 60093/ASTM D257.

Accessories

Flight

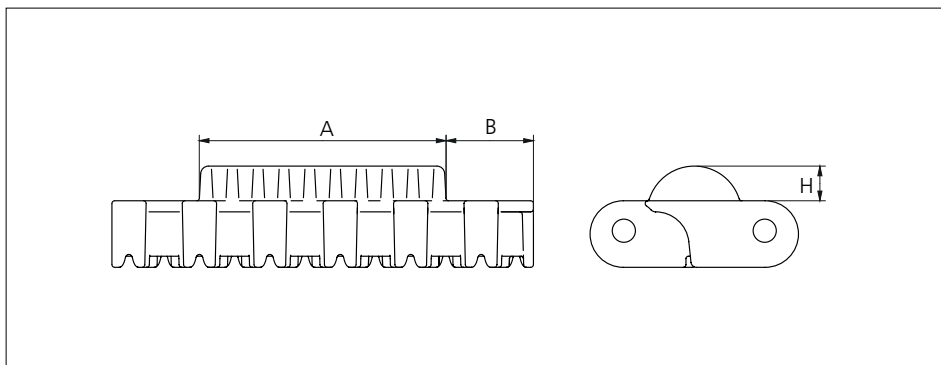


Type	Flight material & color	A		B		H		Link size	Width	
		mm	in	mm	in	mm	in		mm	in
Car pusher	POM NL O	20.0	0.79	31.0	1.22	35.0	1.38	K600	152.4	6.00

Backflex radius when flights are used: 200 mm (7.87 in).

Accessories

Flight



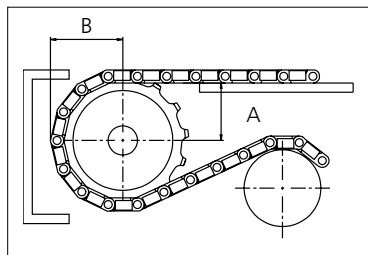
Type	Flight material & color	A		B		H		Link size	Width	
		mm	in	mm	in	mm	in		mm	in
Curved Flight	POM NL Y	89.0	3.50	31.5	1.24	12.5	0.49	K600	152.4	6.00

Sprocket

No of teeth	Bore size							Overall diameter		Pitch diameter		Hub diameter		*A-dimension		B-dimension		Single row/Two way	Double row/Two way	Molded PA6 LG	Machined PA6 N
	Pilot bore	in	1.57	2.36	2.50	3.54	3.54														
	mm	40.0	60.0	63.5	90.0	120.0	mm	in	mm	in	mm	in	mm	in	mm	in					
Z12	x		■		■		197.3	7.77	197.0	7.76	150.0	5.91	82.0	3.23	109.4	4.31		x	x		
Z16	x		■		■	■	263	10.35	261.4	10.29	200.0	7.87	115.0	4.53	141.5	5.57		x	x	x	

*A-dimension for automotive applications use A = (B-23.0 mm/0.91 in).

Non standard material and color:
See uni Material and Color Overview.



Other sprocket sizes are available upon request.
Two-part sprockets are available upon request.
Round bores are always delivered with keyway.
Other bore sizes are available upon request.
uni Retainer Rings: See uni Retainer Ring data sheet
Width of single tooth = 10.0 mm (0.39 in)
Width of sprocket = 50.0 mm (1.98 in)

Max load per sprocket shown does not take bore size into account.
Please also ensure that sufficient size shaft is chosen for corresponding load.

For correct sprocket position: See uni Assembly Instructions for uni CSB.
For more detailed sprocket information, contact Customer Service.

uni CSB Rough/151218



Expert advice, quality solutions and local service for all your belting needs
www.ammeraalbeltech.com

Ammeraal Beltech Modular A/S
Hjulmagervej 21
DK-7100 Vejle

T +45 7572 3100
F +45 7572 3348
admin@unichains.com
www.unichains.com

This information is subject to alteration due to continuous development. Ammeraal Beltech will not be held liable for the incorrect use of the above stated information. This information replaces previous information. All activities performed and services rendered by Ammeraal Beltech are subject to general terms and conditions of sale and delivery, as applied by its operating companies.

Local Contacts

Austria

T +43 171728 133
info-de@ammeraalbeltech.com
www.ammeraalbeltech.at

Belgium

T +32 2 466 03 00
info-be@ammeraalbeltech.com
www.ammeraalbeltech.be

Canada

T +1 905 890 1311
info-ca@ammeraalbeltech.com
www.ammeraalbeltech.com

Chile

T +56 2 233 12900
info-cl@ammeraalbeltech.com
www.ammeraalbeltech.cl

China

T +86 512 8287 2709
info-cn@ammeraalbeltech.com
www.ammeraalbeltech.com.cn

Czech Republic

T +420 567 117 211
info-cz@ammeraalbeltech.com
www.ammeraalbeltech.cz

Denmark

T + 45 7572 3100
info-dk@ammeraalbeltech.com
www.unichains.com

Finland

T +358 207 911 400
info-fi@ammeraalbeltech.com
www.ammeraalbeltech.fi

France

T +33 3 20 90 36 00
info-fr@ammeraalbeltech.com
www.ammeraalbeltech.fr

Germany

T +49 4152 937-0
info-de@ammeraalbeltech.com
www.ammeraalbeltech.de

Hungary

T +36 30 311 6099
info-hu@ammeraalbeltech.com
www.ammeraalbeltech.hu

India

T +91 44 265 34 244
info-in@ammeraalbeltech.com
www.ammeraalbeltech.com

Italy

T +39 051 660 60 06
info-it@ammeraalbeltech.com
www.ammeraalbeltech.it

Luxembourg

T +352 26 48 38 56
info-lu@ammeraalbeltech.com
www.ammeraal-beltech.lu

Malaysia

T +60 3 806 188 49
info-my@ammeraalbeltech.com
www.ammeraalbeltech.com

Netherlands

T +31 72 57 51212
info-nl@ammeraalbeltech.com
www.ammeraalbeltech.nl

Poland

T +48 32 44 77 179
info-pl@ammeraalbeltech.com
www.ammeraalbeltech.com

Portugal

T +351 22 947 94 40
info-pt@ammeraalbeltech.com
www.ammeraalbeltech.pt

Singapore

T +65 62739767
info-sg@ammeraalbeltech.com
www.ammeraalbeltech.com

Slovakia

T +421 2 55648541-2
info-sk@ammeraalbeltech.com
www.ammeraalbeltech.sk

South Korea

T +82 31 448 3613-7
info-kr@ammeraalbeltech.com
www.ammeraalbeltech.co.kr

Spain

T +34 93 718 3054
info-es@ammeraalbeltech.com
www.ammeraalbeltech.es

Sweden

T +46 44 780 3010
info-se@ammeraalbeltech.com
www.ammeraalbeltech.se

Switzerland

T +41 55 2253 535
info-ch@ammeraalbeltech.com
www.ammeraalbeltech.ch

Thailand

T +66 2 902 2604-13
info-th@ammeraalbeltech.com
www.ammeraalbeltech.com

United Kingdom

T +44 1992 500550
info-uk@ammeraalbeltech.com
www.ammeraalbeltech.co.uk

United States

T +1 847 673 6720
info-us@ammeraalbeltech.com
www.ammeraalbeltech.com

Vietnam

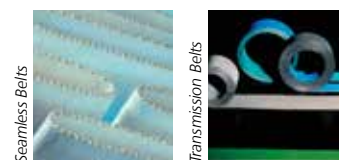
T +84 8 376 562 05
info-vn@ammeraalbeltech.com
www.ammeraalbeltech.com.vn

Expert advice, quality solutions
and local service
for all your belting needs



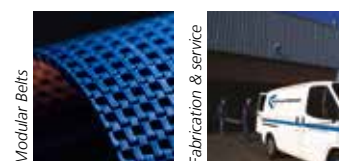
Conveyor Belts

Timing Belts



Seamless Belts

Transmission Belts



Modular Belts

Fabrication & service

Global Headquarters:

Ammeraal Beltech Holding B.V.

P.O. Box 38
1700 AA Heerhugowaard
The Netherlands

T +31 (0)72 575 1212
F +31 (0)72 571 6455

info@ammeraalbeltech.com
www.ammeraalbeltech.com

... and 150 more service contact points on www.ammeraalbeltech.com