

# Ammeraal Beltech Modular

Innovative belt and chain solutions  
for every industry & application



# Content

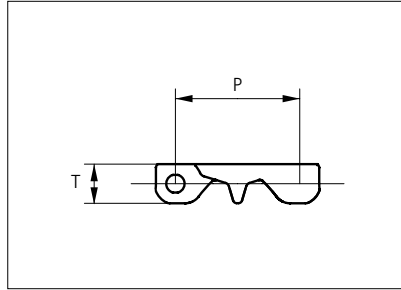
uni ECB

page 3 - 6



# Plastic Modular Belt

Series **uni ECB** Type **C**



Straight running belt  
 Nominal pitch: 50.8 mm (2.00 in)  
 Surface type: Closed  
 Surface opening: 0%  
 Front- and backflex radius:  
 65 mm (2.60 in)  
 uni Snap link (pinless)

Belt material & color	POM SI <span style="border: 1px solid black; padding: 0 2px;">W</span>	mm	in	T	mm	in
		P (Nominal)	50.8		2.00	16.0

Non standard material and color: See uni Material and Color Overview.  
 POM-SI B is available as MTO and can be used as marker in belt.  
 Please note that uni ECB in POM-SI blue is not according to the standard color quality for blue. Small variations may occur.

Belt width			Permissible tensile force (Belt material)		Weight (Belt material)		Min No drive sprocket per shaft	Number of wear strips (min no)	
			POM-SI		POM-SI			**Carry (pcs)	**Return (pcs)
	mm	in	N	lb	kg/m	lb/ft			
K1600	402	15.8	4400	899	5.0	3.36	3	3	2
K1800	452	17.8	5500	1236	6.2	4.44	4	4	2
K2000	501	19.8	5500	1236	6.6	4.17	4	4	2
K2400	603	23.7	6600	1484	7.5	5.04	5	5	3
K3000	754	29.7	7700	1731	9.3	6.25	6	6	3
K3200	806	31.7	8800	1978	10.0	6.72	6	6	3

General belt tolerance is +0/-0.4% at 23°C/73°F.  
 \*Max. Load per Drive Sprocket. Belt material: 1500 N (337 lbf).  
 \*\*Max. Spacing between wear strips, Carry: 152 mm (6 in); Return: 304 mm (12 in).  
 All materials are FDA approved for use with food contact. uni ECB complies to the following standards; EC 1935/2004, EU 10/2011, NSF/ANSI/3-A STANDARD 14159-1.  
 Material temperature range: -40 to +90°C (-40 to +194°F).  
 Non standard belt widths: K1600/K2400/K3200 can be bricked to make higher belt widths.  
 Non standard belt widths is not recommended by uni-chains because of cleanability.

= Single Link



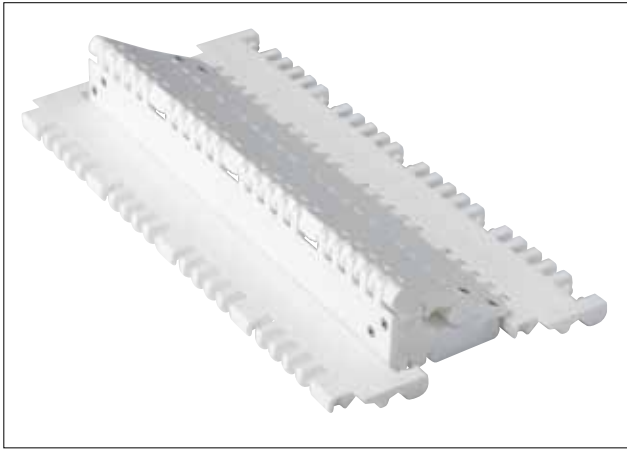
STANDARD

STRAIGHT RUNNING

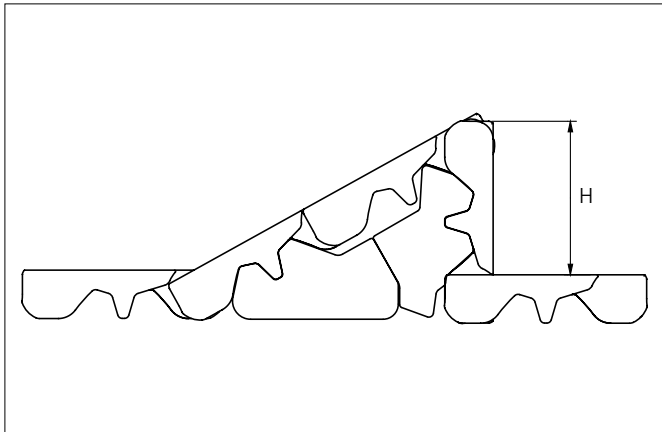
PITCH 50.8 MM/2.00 IN

## Accessories

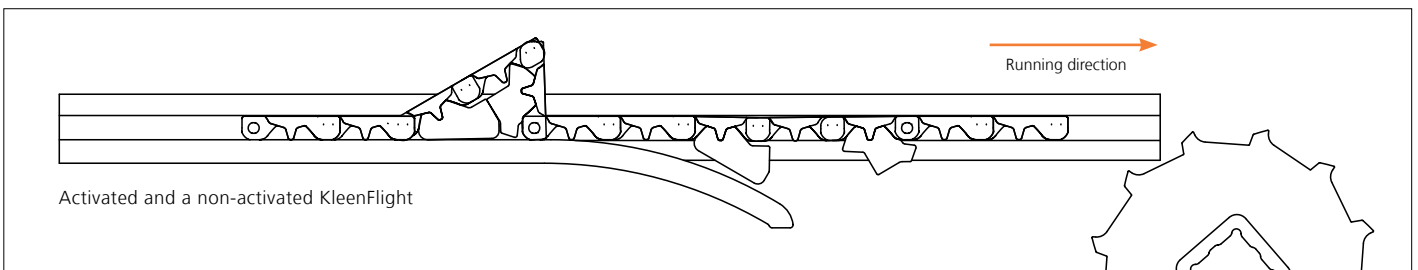
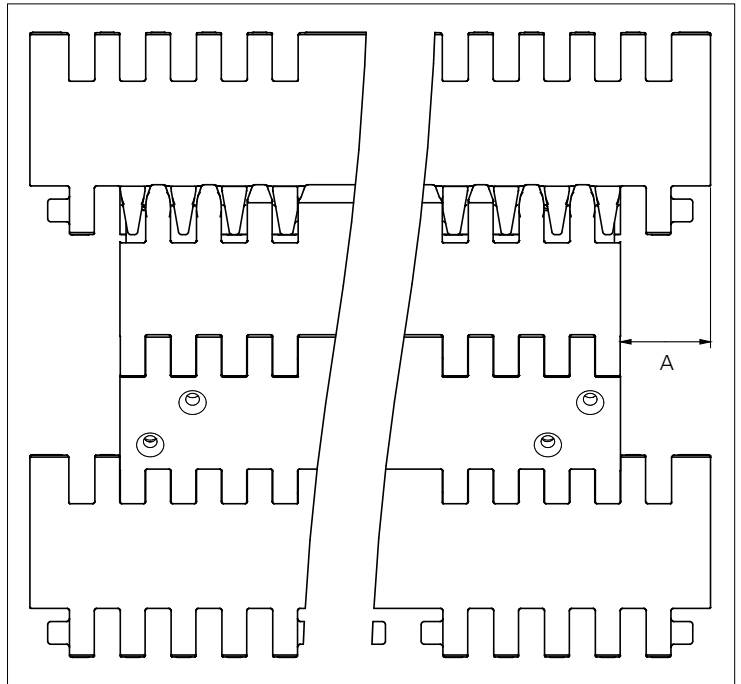
### KleenFlight



Type	Material & color	Link combination	A		H	
			mm	in	mm	in
Flat	POM-SI <b>W</b>	K1600/K1800	25.4	1.00	53.0	2.08
		K1800/K2000	25.4	1.00	53.0	2.08
		K2000/K2400	50.8	2.00	53.0	2.08
		K3000/K3200	25.4	1.00	53.0	2.08



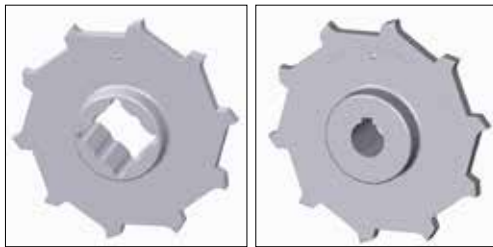
More information about KleenFlight: See the KleenFlight Engineering Guidelines  
When ordering, please state the required distance between the activated KleenFlight



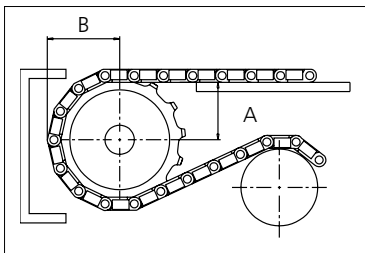
## Sprocket

No of teeth	Pilot bore	Bore size											Overall diameter		Pitch diameter		Hub diameter		* A-dimension		B-dimension		Single row/One way	Double row/Two way	Molded PA6 LG	Machined PA6 N	
		in	0.78	0.98	1.00	1.18	1.25	1.50	1.57	2.36	2.50	3.54															
		mm	20.0	25.0	25.4	30.0	31.8	38.1	40.0	60.0	63.5	90.0	mm	in	mm	in	mm	in	mm	in							
Z08	x				●	●	●	■	■					132.9	5.23	132.8	5.23	65	2.56	53.3	2.10	74.9	2.95	x		x	
Z10	x					●	●	■	■					166.3	6.55	164.4	6.47	65	2.56	70.2	2.76	90.7	3.57	x		x	
Z10												■	■	166.3	6.55	164.4	6.47	120	4.72	70.2	2.76	90.7	3.57	x		x	
Z12	x					●	●	■	■					198.6	7.82	196.3	7.73	65	2.56	86.8	3.42	106.6	4.20	x		x	
Z12												■	■	198.6	7.82	196.3	7.73	120	4.72	86.8	3.42	106.6	4.20	x		x	
Z16	x					●	●	■	■					263.8	10.39	260.4	10.25	150	5.90	119.7	4.71	138.7	5.46	x		x	

■ Molded sprocket ● Molded sprocket



Round bores are always delivered with keyway



Non standard material and color: See uni Material and Color Overview.

Other sprocket sizes are available upon request.  
 Two-part sprockets are available upon request.  
 Round bores are always delivered with keyway.  
 Other bore sizes are available upon request.  
 uni Retainer Rings: See uni Retainer Ring data sheet.  
 Width of tooth = 9.5 mm (0.37 in)  
 Width of sprocket = 42.3 mm (1.67 in)

Max load per sprocket shown does not take bore size into account.  
 Please also ensure that sufficient size shaft is chosen for corresponding load.

For correct sprocket position: See uni Assembly Instructions for uni ECB.  
 For more detailed sprocket information, contact Customer Service.



Conveyor Belt



Seamless Belt



Modular Belt



Timing Belt



Transmission Belt



Fabrication & service

*Solid advice*  
*For all your belting needs*  
*Local stock & service*  
[www.ammeraalbeltech.com](http://www.ammeraalbeltech.com)

**Ammeraal Beltech Modular A/S**  
Hjulgagervej 21  
DK-7100 Vejle

T +45 7572 3100  
F +45 7572 3348  
admin@unichains.com  
www.unichains.com

This information is subject to alteration due to continuous development. Ammeraal Beltech will not be held liable for the incorrect use of the above stated information. This information replaces previous information. All activities performed and services rendered by Ammeraal Beltech are subject to general terms and conditions of sale and delivery, as applied by its operating companies.

# Local Contacts

## Austria

T +43 171728 133  
info-de@ammeraalbeltech.com  
www.ammeraalbeltech.at

## Belgium

T +32 2 466 03 00  
info-be@ammeraalbeltech.com  
www.ammeraalbeltech.be

## Canada

T +1 905 890 1311  
info-ca@ammeraalbeltech.com  
www.ammeraalbeltech.com

## Chile

T +56 2 233 12900  
info-cl@ammeraalbeltech.com  
www.ammeraalbeltech.cl

## China

T +86 512 8287 2709  
info-cn@ammeraalbeltech.com  
www.ammeraalbeltech.com.cn

## Czech Republic

T +420 567 117 211  
info-cz@ammeraalbeltech.com  
www.ammeraalbeltech.cz

## Denmark

T + 45 7572 3100  
info-dk@ammeraalbeltech.com  
www.unichains.com

## Finland

T +358 207 911 400  
info-fi@ammeraalbeltech.com  
www.ammeraalbeltech.fi

## France

T +33 3 20 90 36 00  
info-fr@ammeraalbeltech.com  
www.ammeraalbeltech.fr

## Germany

T +49 4152 937-0  
info-de@ammeraalbeltech.com  
www.ammeraalbeltech.de

## Hungary

T +36 30 311 6099  
info-hu@ammeraalbeltech.com  
www.ammeraalbeltech.hu

## India

T +91 44 265 34 244  
info-in@ammeraalbeltech.com  
www.ammeraalbeltech.com

## Italy

T +39 051 660 60 06  
info-it@ammeraalbeltech.com  
www.ammeraalbeltech.it

## Luxembourg

T +352 26 48 38 56  
info-lu@ammeraalbeltech.com  
www.ammeraal-beltech.lu

## Malaysia

T +60 3 806 188 49  
info-my@ammeraalbeltech.com  
www.ammeraalbeltech.com

## Netherlands

T +31 72 57 51212  
info-nl@ammeraalbeltech.com  
www.ammeraalbeltech.nl

## Poland

T +48 32 44 77 179  
info-pl@ammeraalbeltech.com  
www.ammeraalbeltech.com

## Portugal

T +351 22 947 94 40  
info-pt@ammeraalbeltech.com  
www.ammeraalbeltech.pt

## Singapore

T +65 62739767  
info-sg@ammeraalbeltech.com  
www.ammeraalbeltech.com

## Slovakia

T +421 2 55648541-2  
info-sk@ammeraalbeltech.com  
www.ammeraalbeltech.sk

## South Korea

T +82 31 448 3613-7  
info-kr@ammeraalbeltech.com  
www.ammeraalbeltech.co.kr

## Spain

T +34 93 718 3054  
info-es@ammeraalbeltech.com  
www.ammeraalbeltech.es

## Sweden

T +46 44 780 3010  
info-se@ammeraalbeltech.com  
www.ammeraalbeltech.se

## Switzerland

T +41 55 2253 535  
info-ch@ammeraalbeltech.com  
www.ammeraalbeltech.ch

## Thailand

T +66 2 902 2604-13  
info-th@ammeraalbeltech.com  
www.ammeraalbeltech.com

## United Kingdom

T +44 1992 500550  
info-uk@ammeraalbeltech.com  
www.ammeraalbeltech.co.uk

## United States

T +1 847 673 6720  
info-us@ammeraalbeltech.com  
www.ammeraalbeltech.com

## Vietnam

T +84 8 376 562 05  
info-vn@ammeraalbeltech.com  
www.ammeraalbeltech.com.vn

## Global Headquarters:

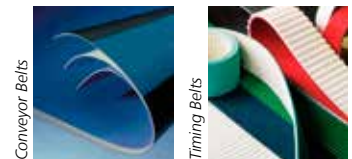
### Ammeraal Beltech Holding B.V.

P.O. Box 38  
1700 AA Heerhugowaard  
The Netherlands

T +31 (0)72 575 1212  
F +31 (0)72 571 6455

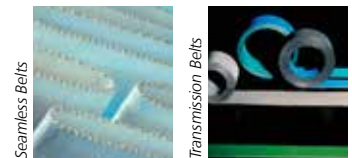
info@ammeraalbeltech.com  
www.ammeraalbeltech.com

Expert advice, quality solutions  
and local service  
for all your belting needs



Conveyor Belts

Timing Belts



Seamless Belts

Transmission Belts



Modular Belts

Fabrication & service

... and 150 more service contact points on [www.ammeraalbeltech.com](http://www.ammeraalbeltech.com)