

Ammeraal Beltech Modular

Innovative belt and chain solutions
for every industry & application



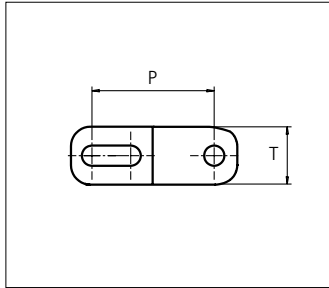
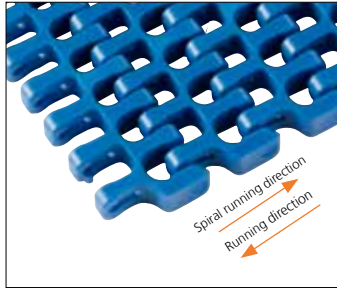
Content

uni Flex ASB CS R2.2	page 3 - 6
uni Flex ASB Edge R2.2	page 7 - 10
uni Flex ASB R1.6	page 11 - 14
uni Flex ASB R2.2	page 15 - 18
uni Flex ASB Rubber Top R2.2	page 19 - 22
uni Flex ASB Tab R2.2	page 23 - 26
uni Flex ASB Top R2.2	page 27 - 28
uni Flex ASB R2.5/3.0/3.5/4.0	page 29 - 32
uni Flex ASB CS R2.5/3.0/3.5/4.0	page 33 - 36



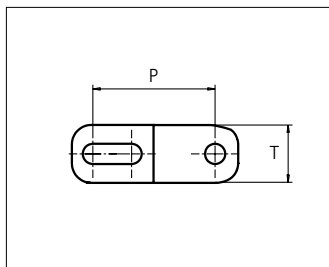
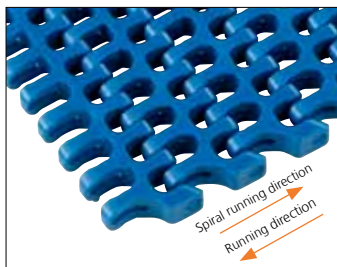
Plastic Modular Belt

Series uni Flex ASB

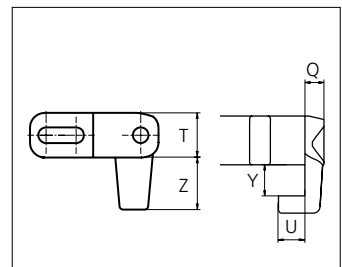
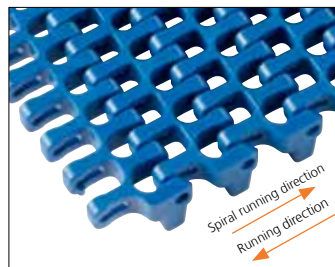


Sideflexing belt
 Nominal pitch: 25.4 mm (1.00 in)
 Surface type: Flat
 Surface opening: 43%
 Backflex radius: 25.0 mm (0.98 in)
 Pin diameter: 4.0 mm (0.16 in)
 Min. inside radius: R1.6 x belt width, R2.2 x belt width
 Curved surface makes perfect circle when Z9 tooth sprocket or 95 mm (3.74 in) flex diameter is applied.

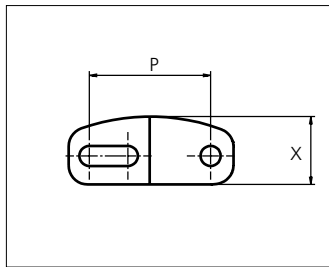
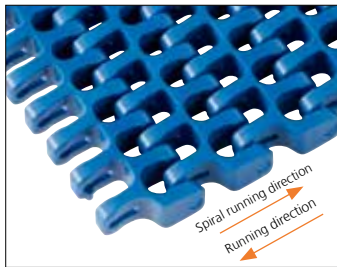
43% Open Radius 1.6



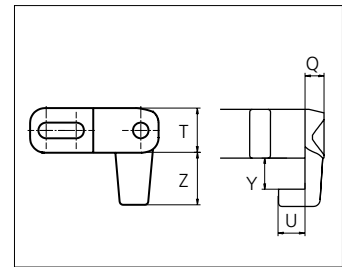
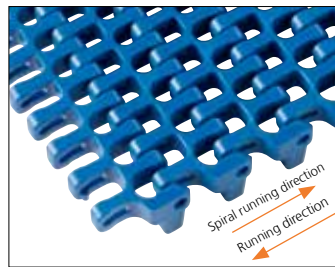
43% Open Radius 2.2



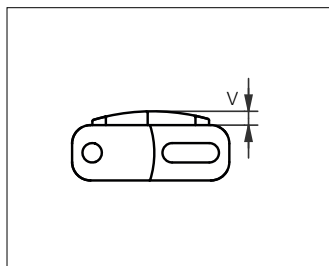
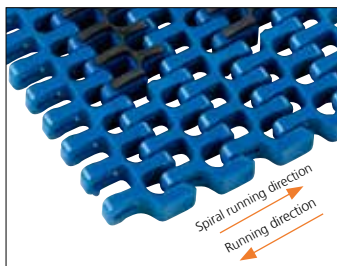
43% Open Tab Radius 2.2



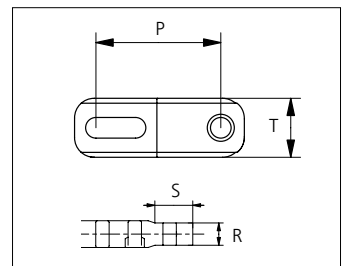
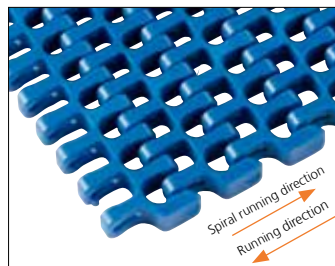
43% Open Curved Surface Radius 2.2



43% Open Curved Surface Tab Radius 2.2



43% Open Rubber Top Radius 2.2




43% Open Edge Radius 2.2

Min. indent for Rubber Top inside and outside in the belt is 44.0 mm (1.73 in).

	mm	in		mm	in		mm	in		mm	in
P (Nominal)	25.4	1.00	S	16.0	0.63	V	3.0	0.12	Z	14.0	0.55
Q	5.5	0.22	T	12.0	0.47	X	14.2	0.56	-	-	-
R	10.0	0.39	U	7.5	0.30	Y	9.0	0.35	-	-	-




STANDARD
 SIDE FLEXING
 PITCH 25.4 MM/1.00 IN

Type	Belt materials and colors	Standars pin materials and colors
43% Open Radius 1.6	POM-D B	 PA6.6 B
43% Open Radius 2.2	POM-D B W	
	PP B W G	
43% Open Tab Radius 2.2	POM-D B W	
	PP B W	
43% Open Curved Surface Radius 2.2	POM-D B W	
43% Open Tab Curved Surface Radius 2.2	POM-D B W	
43% Open Rubber Top Radius 2.2	PP B + 03 K	
	PP W + 03 N	
43% Open Edge Radius 2.2	POM-D B	
	PP B	

Non standard material and color: See uni Material and Color Overview.

Alternative pin and lock materials:

 Snap Pin A2: PP **W** PBT **LG** PA6.6 **B**

Belt width		Permissible tensile force (Belt/pin material)								Belt weight (Belt/pin material)				*Min. No. drive sprocket per shaft	Number of wear strips (Min. No.)	
		POM-D/PA6.6				PP/PA6.6				POM-D/PA6.6		PP/PA6.6			**Carry (pcs)	**Return (pcs)
		Straight sections		Curve sections		Straight sections		Curve sections		kg/m	lb/ft	kg/m	lb/ft			
mm	in	N	lbf	N	lbf	N	lbf	N	lbf	kg/m	lb/ft	kg/m	lb/ft			
149	5.9	2801	630	1200	270	1863	419	720	162	1.2	0.82	0.8	0.52	2	2	2
162	6.4	3046	685	1200	270	2025	455	720	162	1.3	0.89	0.8	0.57	2	2	2
226	8.9	4249	955	1200	270	2825	635	720	162	1.9	1.25	1.2	0.79	2	2	2
302	11.9	5678	1276	1200	270	3775	849	720	162	2.5	1.66	1.6	1.06	3	3	2
379	14.9	7125	1602	1200	270	4738	1065	720	162	3.1	2.09	2.0	1.32	3	3	2
455	17.9	8554	1923	1200	270	5688	1279	720	162	3.7	2.51	2.4	1.59	5	4	2
531	20.9	9983	2244	1600	360	6638	1492	960	216	4.4	2.93	2.8	1.86	5	4	2
608	23.9	11430	2570	1600	360	7600	1708	960	216	5.0	3.35	3.2	2.12	5	5	3
531	20.9	9983	2244	2040	459	6638	1492	1224	275	4.4	2.93	2.8	1.86	5	4	2
608	23.9	11430	2570	2040	459	7600	1708	1224	275	5.0	3.35	3.2	2.12	5	5	3
684	26.9	12859	2891	2040	459	8550	1922	1224	275	5.6	3.77	3.6	2.39	5	5	3
761	30.0	14307	3216	2040	459	9513	2138	1224	275	6.2	4.19	4.0	2.66	7	6	3
1449	57.0	27241	6124	2040	459	18113	4072	1224	275	11.9	7.99	7.5	5.06	11	10	5
1984	78.1	37299	8385	2040	459	24800	5575	1224	275	16.3	10.93	10.3	6.93	15	14	7

Additional standard belt widths are available in steps of 76.4 mm (3.01 in). Additional non-standard belt widths are available in steps of 12.7 mm (0.50 in).

Additional standard belt widths are available in steps of 76.4 mm (3.01 in). Additional non-standard belt widths are available in steps of 12.7 mm (0.50 in).

General belt tolerance is +0/-0.4% at 23°C/73°F. For exact belt width contact Customer Service. Non standard belt width on request.

*Max. Load per Drive Sprocket. Belt material: POM-D 2000 N (450 lbf), PP 1100 N (247 lbf).

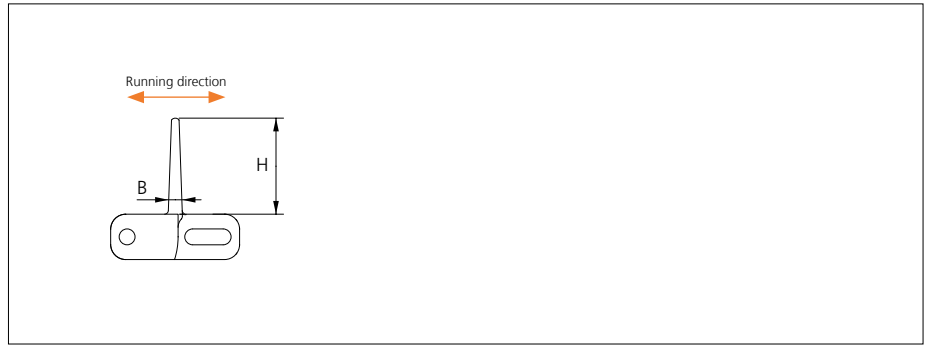
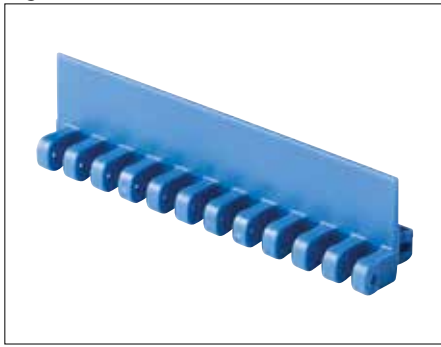
**Max. Spacing between wear strips, Carry: 152 mm (6 in); Return: 304 mm (12 in).

Max. Belt width with Flex ASB R1.6: 1296 mm (51.0 in).

 = Single Link

Accessories

Flight



Type	Flight Material & color	B		H		Link size	Width	
		mm	in	mm	in		mm	in
Flat	POM-D B W	3.7	0.15	25.4	1.00	K600	151.0	5.94

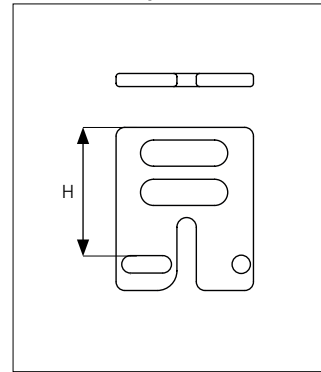
Non Standard material and color: See uni Material and Color Overview.

Accessories

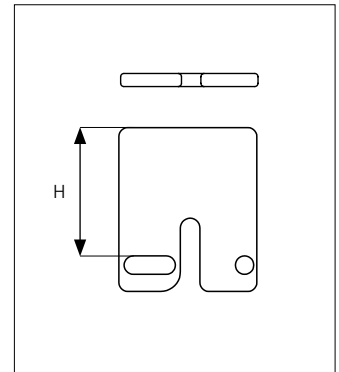
Side Guard



Side Guard Open



Side Guard

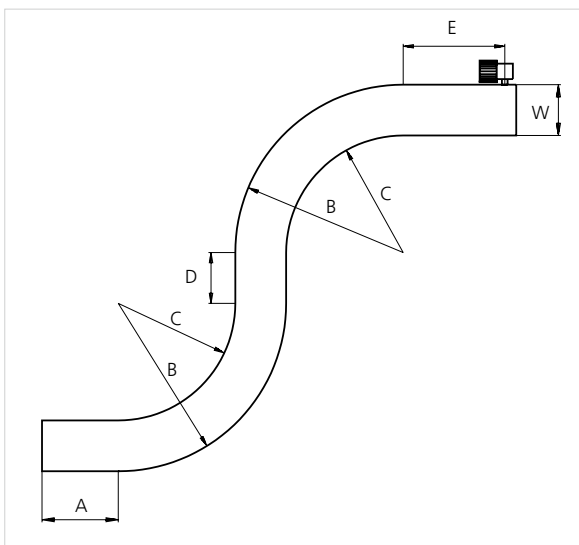


Type	Side Guard Material & color	H	
		mm	in
Side Guard Side Guard Open	POM-D B W	25.4	1.00

Min. indent for Side Guard is: 44.0 mm (1.73 in) and Increment 12.7 mm (0.50 in).

Non Standard material and color: See uni Material and Color Overview.

Design Guidelines



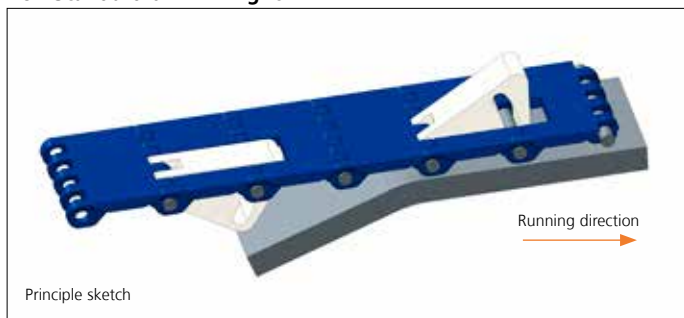
	43% Open Radius 2.2 43% Open Tab Radius 2.2 43% Open Curved Surface Radius 2.2 43% Open Curved Surface Tab Radius 2.2	uni Flex ASB 43% Open Radius 1.6
A	min 1.5 x W	min 1.5 x W
B	min 3.2 x W	min 2.6 x W
C	min 2.2 x W	min 1.6 x W
D	min 2 x W	
E	min 2 x W, min	
W	Belt width	

uni Flex ASB 43% Open Radius 1.6 can not be used in conveyors with both left and right turning curves. All curves have to turn in the same direction.

For min. conveyor dimensions please refer to sketch and diagram.

Accessories

Non Standard uni AmFlight



Other Non Standard option: See uni AmFlight Overview.

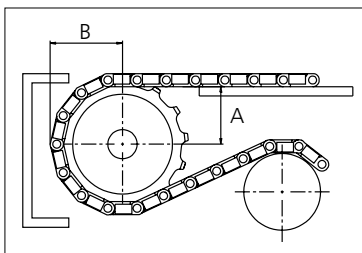
Sprocket

No. of teeth	Bore size												Overall diameter		Pitch diameter		Hub diameter		Dimension A		Dimension B		Single row/Two way	Double row/Two way	Molded	Machined
	Pilot Bore	in	0.75	0.79	0.98	1.00	1.18	1.25	1.50	1.57	2.36	2.50														
	mm	19.1	20.0	25.0	25.4	30.0	31.8	38.1	40.0	60.0	63.5	90.0	mm	in	mm	in	mm	in	mm	in						
Z07	x		●	●	●	●						58.0	2.28	58.5	2.30	40.8	1.61	20.4	0.80	35.2	1.39	x	x			
Z09	x			●	●	●	●					75.0	2.95	74.3	2.93	57.8	2.28	28.9	1.14	43.1	1.70	x	x			
Z12	x			●	●	●	●	■				100.0	3.94	98.1	3.86	82.8	3.26	41.4	1.63	55.1	2.17	x	x			
Z15	x				●	●	●	■	●	■		124.6	4.91	122.2	4.81	107.4	4.23	53.8	2.12	67.1	2.64	x	x			
Z18	x					●	●	●	●	■	■	149.3	5.88	146.3	5.76	132.1	5.20	66.0	2.60	79.2	3.12	x	x			

■ Machined sprocket



● Machined sprocket



Non standard material and color: See uni Material and Color Overview.

Other sprocket sizes are available upon request

Two-part sprocket are available upon request

Other bore sizes are available upon request

uni Retainer Rings: See uni Retainer Ring data sheet

Width of tooth = 7.0 mm (0.28 in)

Width of sprocket = 30.0 mm (1.18 in)

Max. load per sprocket shown does not take bore size into account.

Please also ensure that sufficient size shaft is chosen for corresponding load.

For correct sprocket position: See uni Assembly Instructions for uni Flex ASB.

For more detailed sprocket information, contact Customer Service.

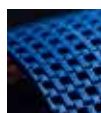
uni Flex ASB/150828



Conveyor Belts



Seamless Belts



Modular Belts



Timing Belts



Transmission Belts



Fabrication & service

Expert advice, quality solutions and local service for all your belting needs
www.ammeraalbeltech.com

Ammeraal Beltech Modular A/S
 Hjulmagervej 21
 DK-7100 Vejle

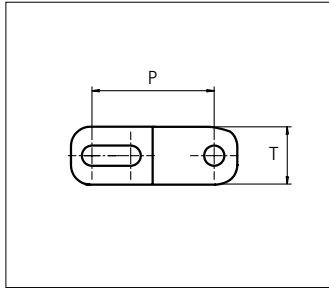
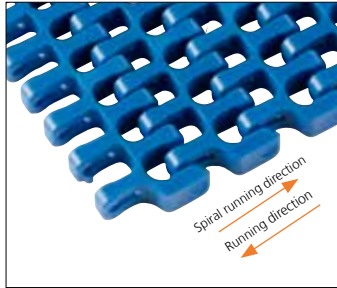
T +45 7572 3100
 F +45 7572 3348
 admin@unichains.com
 www.unichains.com

This information is subject to alteration due to continuous development. Ammeraal Beltech will not be held liable for the incorrect use of the above stated information. This information replaces previous information. All activities performed and services rendered by Ammeraal Beltech are subject to general terms and conditions of sale and delivery, as applied by its operating companies.



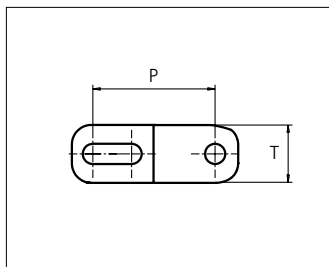
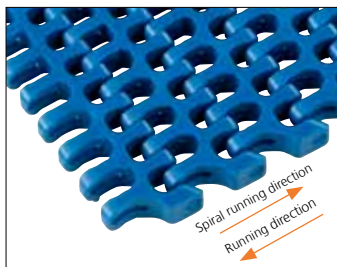
Plastic Modular Belt

Series uni Flex ASB

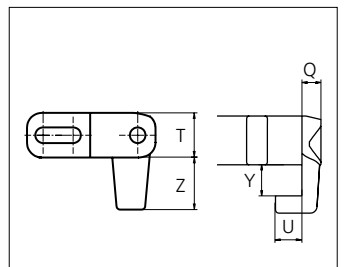
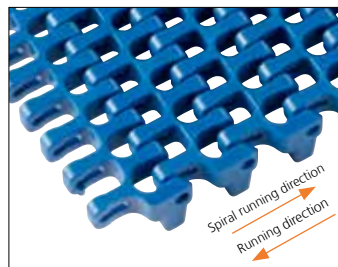


Sideflexing belt
 Nominal pitch: 25.4 mm (1.00 in)
 Surface type: Flat
 Surface opening: 43%
 Backflex radius: 25.0 mm (0.98 in)
 Pin diameter: 4.0 mm (0.16 in)
 Min. inside radius: R1.6 x belt width, R2.2 x belt width
 Curved surface makes perfect circle when Z9 tooth sprocket or 95 mm (3.74 in) flex diameter is applied.

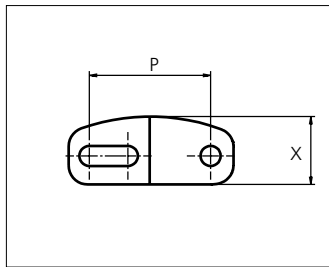
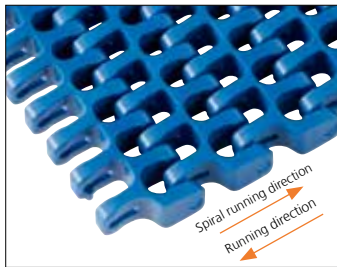
43% Open Radius 1.6



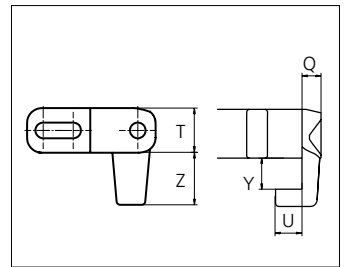
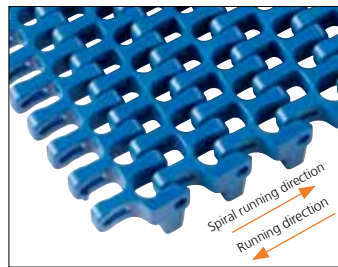
43% Open Radius 2.2



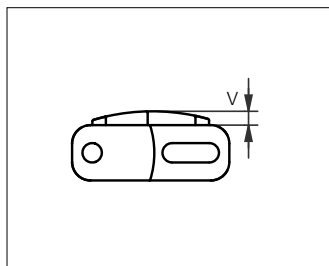
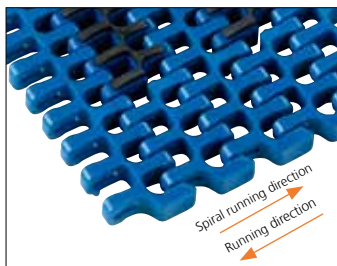
43% Open Tab Radius 2.2



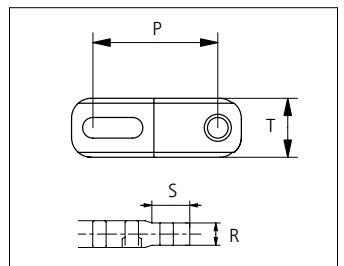
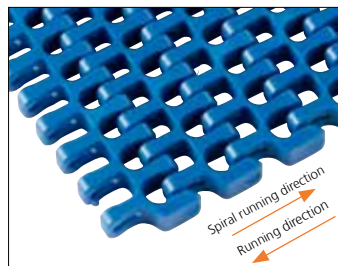
43% Open Curved Surface Radius 2.2



43% Open Curved Surface Tab Radius 2.2



43% Open Rubber Top Radius 2.2



43% Open Edge Radius 2.2

Min. indent for Rubber Top inside and outside in the belt is 44.0 mm (1.73 in).

	mm	in		mm	in		mm	in		mm	in
P (Nominal)	25.4	1.00	S	16.0	0.63	V	3.0	0.12	Z	14.0	0.55
Q	5.5	0.22	T	12.0	0.47	X	14.2	0.56	-	-	-
R	10.0	0.39	U	7.5	0.30	Y	9.0	0.35	-	-	-




STANDARD
SIDE FLEXING
PITCH 25.4 MM/1.00 IN

Type	Belt materials and colors	Standars pin materials and colors
43% Open Radius 1.6	POM-D B	 PA6.6 B
43% Open Radius 2.2	POM-D B W	
	PP B W G	
43% Open Tab Radius 2.2	POM-D B W	
	PP B W	
43% Open Curved Surface Radius 2.2	POM-D B W	
43% Open Tab Curved Surface Radius 2.2	POM-D B W	
43% Open Rubber Top Radius 2.2	PP B + 03 K	
	PP W + 03 N	
43% Open Edge Radius 2.2	POM-D B	
	PP B	

Non standard material and color: See uni Material and Color Overview.

Alternative pin and lock materials:

 Snap Pin A2: PP **W** PBT **LG** PA6.6 **B**

Belt width		Permissible tensile force (Belt/pin material)								Belt weight (Belt/pin material)				*Min. No. drive sprocket per shaft	Number of wear strips (Min. No.)	
		POM-D/PA6.6				PP/PA6.6				POM-D/PA6.6		PP/PA6.6			**Carry (pcs)	**Return (pcs)
		Straight sections		Curve sections		Straight sections		Curve sections		kg/m	lb/ft	kg/m	lb/ft			
mm	in	N	lbf	N	lbf	N	lbf	N	lbf	kg/m	lb/ft	kg/m	lb/ft			
149	5.9	2801	630	1200	270	1863	419	720	162	1.2	0.82	0.8	0.52	2	2	2
162	6.4	3046	685	1200	270	2025	455	720	162	1.3	0.89	0.8	0.57	2	2	2
226	8.9	4249	955	1200	270	2825	635	720	162	1.9	1.25	1.2	0.79	2	2	2
302	11.9	5678	1276	1200	270	3775	849	720	162	2.5	1.66	1.6	1.06	3	3	2
379	14.9	7125	1602	1200	270	4738	1065	720	162	3.1	2.09	2.0	1.32	3	3	2
455	17.9	8554	1923	1200	270	5688	1279	720	162	3.7	2.51	2.4	1.59	5	4	2
531	20.9	9983	2244	1600	360	6638	1492	960	216	4.4	2.93	2.8	1.86	5	4	2
608	23.9	11430	2570	1600	360	7600	1708	960	216	5.0	3.35	3.2	2.12	5	5	3
531	20.9	9983	2244	2040	459	6638	1492	1224	275	4.4	2.93	2.8	1.86	5	4	2
608	23.9	11430	2570	2040	459	7600	1708	1224	275	5.0	3.35	3.2	2.12	5	5	3
684	26.9	12859	2891	2040	459	8550	1922	1224	275	5.6	3.77	3.6	2.39	5	5	3
761	30.0	14307	3216	2040	459	9513	2138	1224	275	6.2	4.19	4.0	2.66	7	6	3
1449	57.0	27241	6124	2040	459	18113	4072	1224	275	11.9	7.99	7.5	5.06	11	10	5
1984	78.1	37299	8385	2040	459	24800	5575	1224	275	16.3	10.93	10.3	6.93	15	14	7

Additional standard belt widths are available in steps of 76.4 mm (3.01 in). Additional non-standard belt widths are available in steps of 12.7 mm (0.50 in).

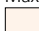
Additional standard belt widths are available in steps of 76.4 mm (3.01 in). Additional non-standard belt widths are available in steps of 12.7 mm (0.50 in).

General belt tolerance is +0/-0.4% at 23°C/73°F. For exact belt width contact Customer Service. Non standard belt width on request.

*Max. Load per Drive Sprocket. Belt material: POM-D 2000 N (450 lbf), PP 1100 N (247 lbf).

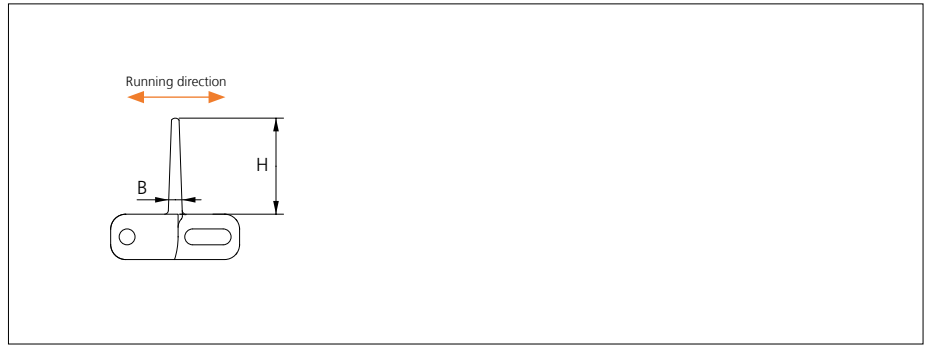
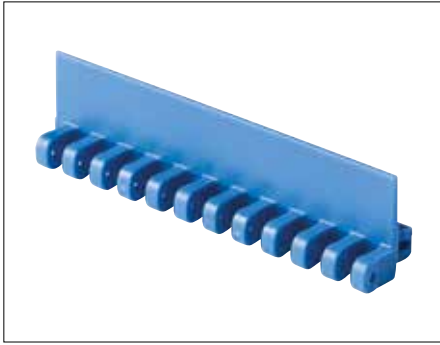
**Max. Spacing between wear strips, Carry: 152 mm (6 in); Return: 304 mm (12 in).

Max. Belt width with Flex ASB R1.6: 1296 mm (51.0 in).

 = Single Link

Accessories

Flight



Type	Flight Material & color	B		H		Link size	Width	
		mm	in	mm	in		mm	in
Flat	POM-D B W	3.7	0.15	25.4	1.00	K600	151.0	5.94

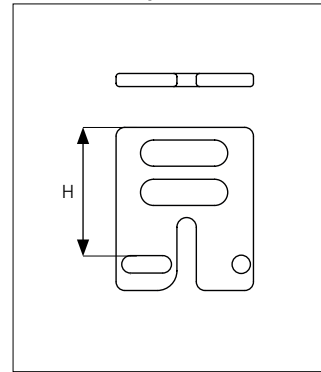
Non Standard material and color: See uni Material and Color Overview.

Accessories

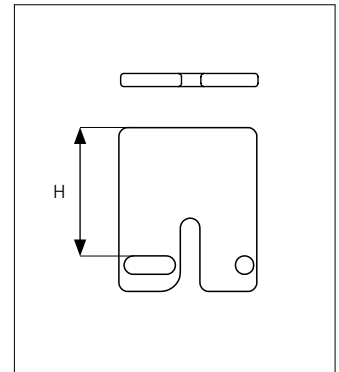
Side Guard



Side Guard Open



Side Guard

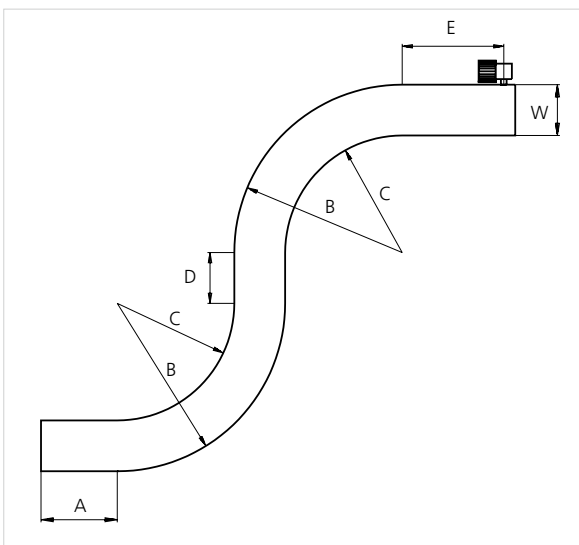


Type	Side Guard Material & color	H	
		mm	in
Side Guard Side Guard Open	POM-D B W	25.4	1.00

Min. indent for Side Guard is: 44.0 mm (1.73 in) and Increment 12.7 mm (0.50 in).

Non Standard material and color: See uni Material and Color Overview.

Design Guidelines



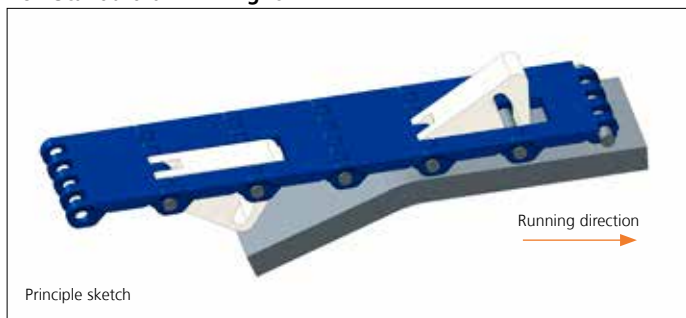
	43% Open Radius 2.2 43% Open Tab Radius 2.2 43% Open Curved Surface Radius 2.2 43% Open Curved Surface Tab Radius 2.2	uni Flex ASB 43% Open Radius 1.6
A	min 1.5 x W	min 1.5 x W
B	min 3.2 x W	min 2.6 x W
C	min 2.2 x W	min 1.6 x W
D	min 2 x W	
E	min 2 x W, min	
W	Belt width	

uni Flex ASB 43% Open Radius 1.6 can not be used in conveyors with both left and right turning curves. All curves have to turn in the same direction.

For min. conveyor dimensions please refer to sketch and diagram.

Accessories

Non Standard uni AmFlight



Other Non Standard option: See uni AmFlight Overview.

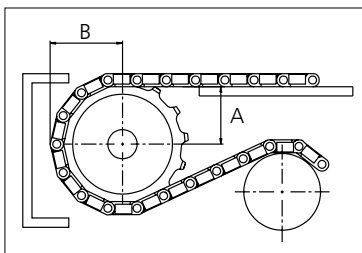
Sprocket

No. of teeth	Bore size												Overall diameter		Pitch diameter		Hub diameter		Dimension A		Dimension B		Single row/Two way	Double row/Two way	Molded	Machined
	Pilot Bore																									
	in	mm	19.1	20.0	25.0	25.4	30.0	31.8	38.1	40.0	60.0	63.5	90.0	mm	in	mm	in	mm	in	mm	in	mm	in	PA6 LG	PA6 N	
Z07	x		●	●	●	●							58.0	2.28	58.5	2.30	40.8	1.61	20.4	0.80	35.2	1.39	x	x		
Z09	x			●	●	●	●						75.0	2.95	74.3	2.93	57.8	2.28	28.9	1.14	43.1	1.70	x	x		
Z12	x			●	●	●	●	■					100.0	3.94	98.1	3.86	82.8	3.26	41.4	1.63	55.1	2.17	x	x		
Z15	x				●	●	●	■	●	■			124.6	4.91	122.2	4.81	107.4	4.23	53.8	2.12	67.1	2.64	x	x		
Z18	x					●	●	●	●	■	■		149.3	5.88	146.3	5.76	132.1	5.20	66.0	2.60	79.2	3.12	x	x		

Machined sprocket



Machined sprocket



Non standard material and color: See uni Material and Color Overview.

Other sprocket sizes are available upon request

Two-part sprocket are available upon request

Other bore sizes are available upon request

uni Retainer Rings: See uni Retainer Ring data sheet

Width of tooth = 7.0 mm (0.28 in)

Width of sprocket = 30.0 mm (1.18 in)

Max. load per sprocket shown does not take bore size into account.

Please also ensure that sufficient size shaft is chosen for corresponding load.

For correct sprocket position: See uni Assembly Instructions for uni Flex ASB.

For more detailed sprocket information, contact Customer Service.

uni Flex ASB/150828



Conveyor Belts



Seamless Belts



Modular Belts



Timing Belts



Transmission Belts



Fabrication & service

Expert advice, quality solutions and local service for all your belting needs
www.ammeraalbeltech.com

Ammeraal Beltech Modular A/S
 Hjulmagervej 21
 DK-7100 Vejle

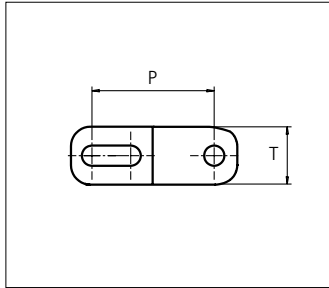
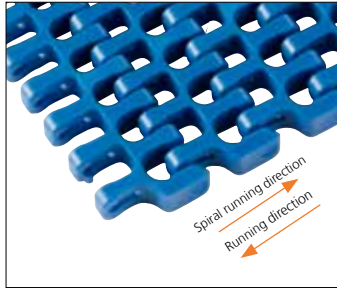
T +45 7572 3100
 F +45 7572 3348
 admin@unichains.com
 www.unichains.com

This information is subject to alteration due to continuous development. Ammeraal Beltech will not be held liable for the incorrect use of the above stated information. This information replaces previous information. All activities performed and services rendered by Ammeraal Beltech are subject to general terms and conditions of sale and delivery, as applied by its operating companies.



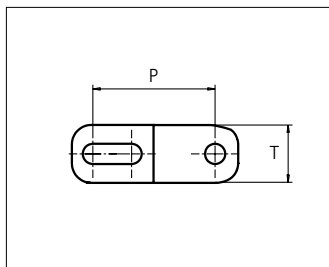
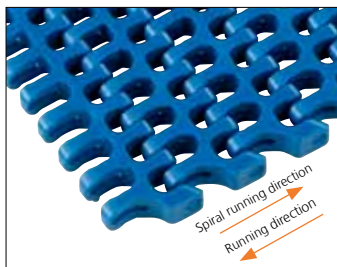
Plastic Modular Belt

Series uni Flex ASB

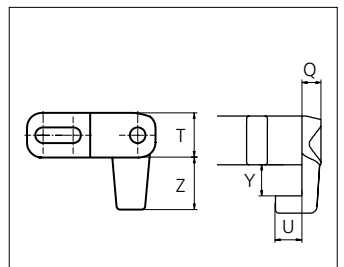
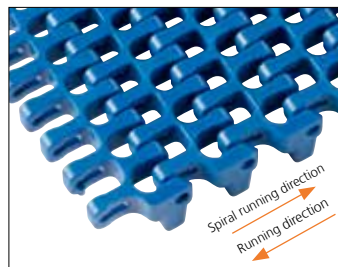


Sideflexing belt
 Nominal pitch: 25.4 mm (1.00 in)
 Surface type: Flat
 Surface opening: 43%
 Backflex radius: 25.0 mm (0.98 in)
 Pin diameter: 4.0 mm (0.16 in)
 Min. inside radius: R1.6 x belt width, R2.2 x belt width
 Curved surface makes perfect circle when Z9 tooth sprocket or 95 mm (3.74 in) flex diameter is applied.

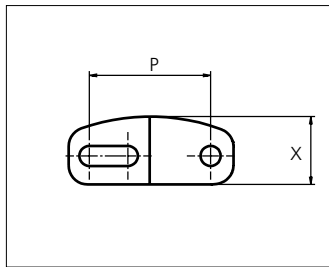
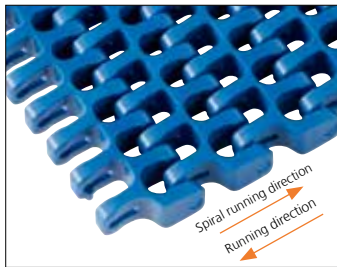
43% Open Radius 1.6



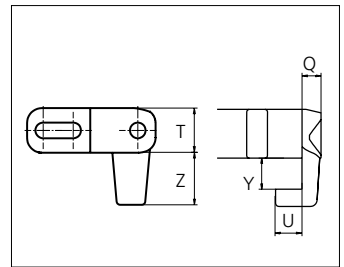
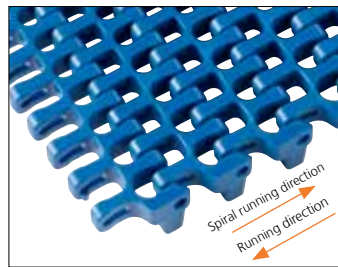
43% Open Radius 2.2



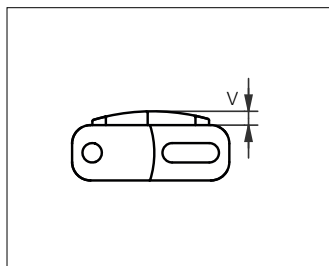
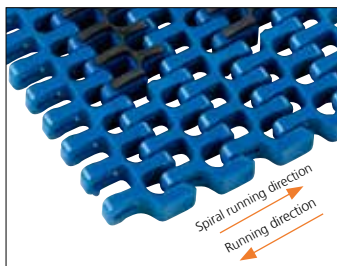
43% Open Tab Radius 2.2



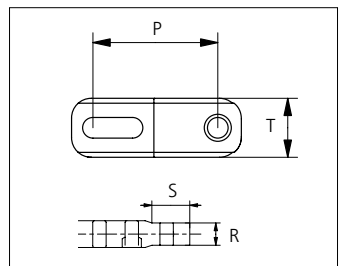
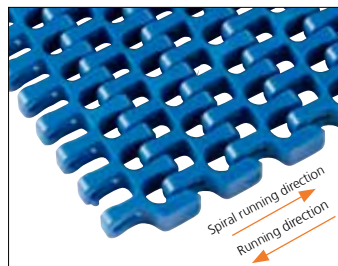
43% Open Curved Surface Radius 2.2



43% Open Curved Surface Tab Radius 2.2



43% Open Rubber Top Radius 2.2




43% Open Edge Radius 2.2

Min. indent for Rubber Top inside and outside in the belt is 44.0 mm (1.73 in).

	mm	in		mm	in		mm	in		mm	in
P (Nominal)	25.4	1.00	S	16.0	0.63	V	3.0	0.12	Z	14.0	0.55
Q	5.5	0.22	T	12.0	0.47	X	14.2	0.56	-	-	-
R	10.0	0.39	U	7.5	0.30	Y	9.0	0.35	-	-	-




STANDARD
SIDE FLEXING
PITCH 25.4 MM/1.00 IN

Type	Belt materials and colors	Standars pin materials and colors
43% Open Radius 1.6	POM-D B	 PA6.6 B
43% Open Radius 2.2	POM-D B W	
	PP B W G	
43% Open Tab Radius 2.2	POM-D B W	
	PP B W	
43% Open Curved Surface Radius 2.2	POM-D B W	
43% Open Tab Curved Surface Radius 2.2	POM-D B W	
43% Open Rubber Top Radius 2.2	PP B + 03 K	
	PP W + 03 N	
43% Open Edge Radius 2.2	POM-D B	
	PP B	

Non standard material and color: See uni Material and Color Overview.

Alternative pin and lock materials:

 Snap Pin A2: PP **W** PBT **LG** PA6.6 **B**

Belt width		Permissible tensile force (Belt/pin material)								Belt weight (Belt/pin material)				*Min. No. drive sprocket per shaft	Number of wear strips (Min. No.)	
		POM-D/PA6.6				PP/PA6.6				POM-D/PA6.6		PP/PA6.6			**Carry (pcs)	**Return (pcs)
		Straight sections		Curve sections		Straight sections		Curve sections		kg/m	lb/ft	kg/m	lb/ft			
mm	in	N	lbf	N	lbf	N	lbf	N	lbf	kg/m	lb/ft	kg/m	lb/ft			
149	5.9	2801	630	1200	270	1863	419	720	162	1.2	0.82	0.8	0.52	2	2	2
162	6.4	3046	685	1200	270	2025	455	720	162	1.3	0.89	0.8	0.57	2	2	2
226	8.9	4249	955	1200	270	2825	635	720	162	1.9	1.25	1.2	0.79	2	2	2
302	11.9	5678	1276	1200	270	3775	849	720	162	2.5	1.66	1.6	1.06	3	3	2
379	14.9	7125	1602	1200	270	4738	1065	720	162	3.1	2.09	2.0	1.32	3	3	2
455	17.9	8554	1923	1200	270	5688	1279	720	162	3.7	2.51	2.4	1.59	5	4	2
531	20.9	9983	2244	1600	360	6638	1492	960	216	4.4	2.93	2.8	1.86	5	4	2
608	23.9	11430	2570	1600	360	7600	1708	960	216	5.0	3.35	3.2	2.12	5	5	3
531	20.9	9983	2244	2040	459	6638	1492	1224	275	4.4	2.93	2.8	1.86	5	4	2
608	23.9	11430	2570	2040	459	7600	1708	1224	275	5.0	3.35	3.2	2.12	5	5	3
684	26.9	12859	2891	2040	459	8550	1922	1224	275	5.6	3.77	3.6	2.39	5	5	3
761	30.0	14307	3216	2040	459	9513	2138	1224	275	6.2	4.19	4.0	2.66	7	6	3
1449	57.0	27241	6124	2040	459	18113	4072	1224	275	11.9	7.99	7.5	5.06	11	10	5
1984	78.1	37299	8385	2040	459	24800	5575	1224	275	16.3	10.93	10.3	6.93	15	14	7

Additional standard belt widths are available in steps of 76.4 mm (3.01 in). Additional non-standard belt widths are available in steps of 12.7 mm (0.50 in).

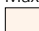
Additional standard belt widths are available in steps of 76.4 mm (3.01 in). Additional non-standard belt widths are available in steps of 12.7 mm (0.50 in).

General belt tolerance is +0/-0.4% at 23°C/73°F. For exact belt width contact Customer Service. Non standard belt width on request.

*Max. Load per Drive Sprocket. Belt material: POM-D 2000 N (450 lbf), PP 1100 N (247 lbf).

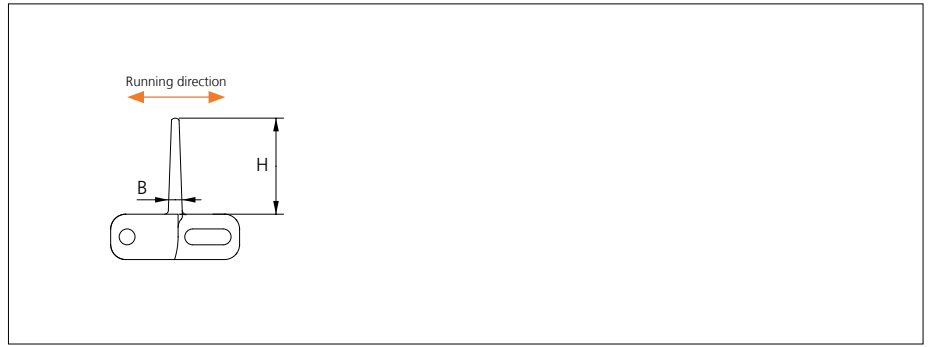
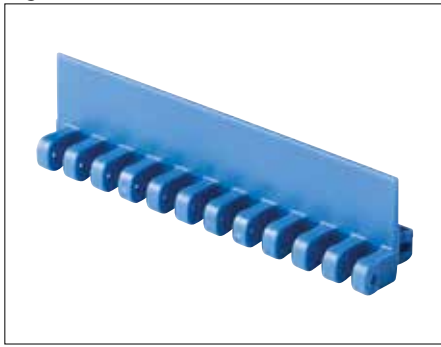
**Max. Spacing between wear strips, Carry: 152 mm (6 in); Return: 304 mm (12 in).

Max. Belt width with Flex ASB R1.6: 1296 mm (51.0 in).

 = Single Link

Accessories

Flight



Type	Flight Material & color	B		H		Link size	Width	
		mm	in	mm	in		mm	in
Flat	POM-D B W	3.7	0.15	25.4	1.00	K600	151.0	5.94

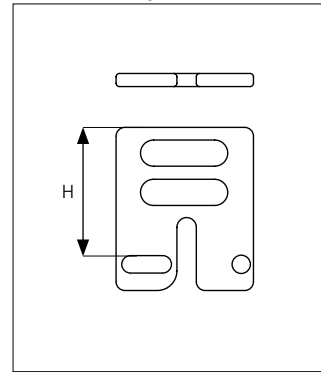
Non Standard material and color: See uni Material and Color Overview.

Accessories

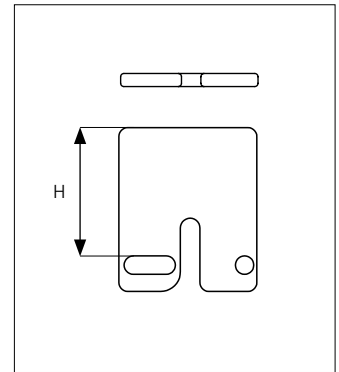
Side Guard



Side Guard Open



Side Guard

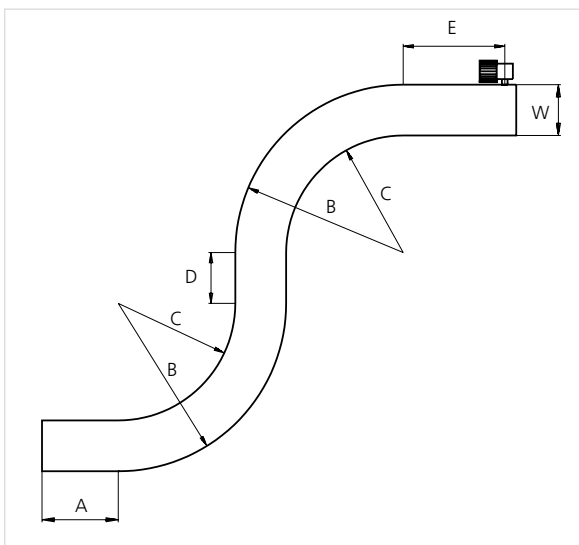


Type	Side Guard Material & color	H	
		mm	in
Side Guard Side Guard Open	POM-D B W	25.4	1.00

Min. indent for Side Guard is: 44.0 mm (1.73 in) and Increment 12.7 mm (0.50 in).

Non Standard material and color: See uni Material and Color Overview.

Design Guidelines



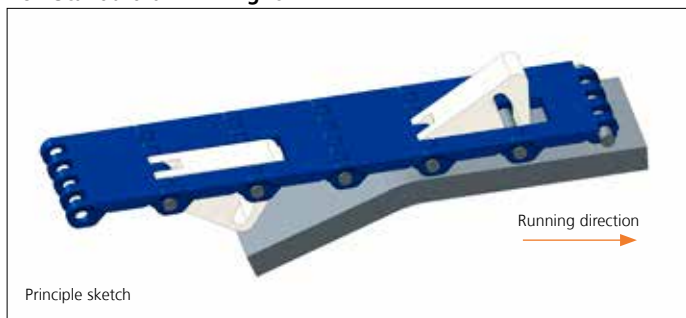
	43% Open Radius 2.2 43% Open Tab Radius 2.2 43% Open Curved Surface Radius 2.2 43% Open Curved Surface Tab Radius 2.2	uni Flex ASB 43% Open Radius 1.6
A	min 1.5 x W	min 1.5 x W
B	min 3.2 x W	min 2.6 x W
C	min 2.2 x W	min 1.6 x W
D	min 2 x W	
E	min 2 x W, min	
W	Belt width	

uni Flex ASB 43% Open Radius 1.6 can not be used in conveyors with both left and right turning curves. All curves have to turn in the same direction.

For min. conveyor dimensions please refer to sketch and diagram.

Accessories

Non Standard uni AmFlight



Other Non Standard option: See uni AmFlight Overview.

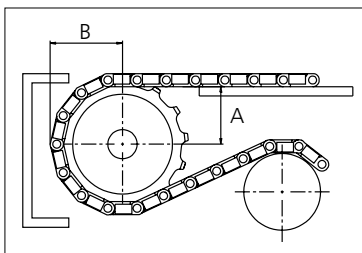
Sprocket

No. of teeth	Bore size												Overall diameter		Pitch diameter		Hub diameter		Dimension A		Dimension B		Single row/Two way	Double row/Two way	Molded	Machined
	Pilot Bore																									
	in	mm	19.1	20.0	25.0	25.4	30.0	31.8	38.1	40.0	60.0	63.5	90.0	mm	in	mm	in	mm	in	mm	in	mm	in	PA6 LG	PA6 N	
Z07	x		●	●	●	●							58.0	2.28	58.5	2.30	40.8	1.61	20.4	0.80	35.2	1.39	x	x		
Z09	x			●	●	●	●						75.0	2.95	74.3	2.93	57.8	2.28	28.9	1.14	43.1	1.70	x	x		
Z12	x			●	●	●	●	■					100.0	3.94	98.1	3.86	82.8	3.26	41.4	1.63	55.1	2.17	x	x		
Z15	x				●	●	●	■	●	■			124.6	4.91	122.2	4.81	107.4	4.23	53.8	2.12	67.1	2.64	x	x		
Z18	x					●	●	●	●	■	■		149.3	5.88	146.3	5.76	132.1	5.20	66.0	2.60	79.2	3.12	x	x		

■ Machined sprocket



● Machined sprocket



Non standard material and color: See uni Material and Color Overview.

Other sprocket sizes are available upon request

Two-part sprocket are available upon request

Other bore sizes are available upon request

uni Retainer Rings: See uni Retainer Ring data sheet

Width of tooth = 7.0 mm (0.28 in)

Width of sprocket = 30.0 mm (1.18 in)

Max. load per sprocket shown does not take bore size into account.

Please also ensure that sufficient size shaft is chosen for corresponding load.

For correct sprocket position: See uni Assembly Instructions for uni Flex ASB.

For more detailed sprocket information, contact Customer Service.

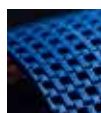
uni Flex ASB/150828



Conveyor Belts



Seamless Belts



Modular Belts



Timing Belts



Transmission Belts



Fabrication & service

Expert advice, quality solutions and local service for all your belting needs
www.ammeraalbeltech.com

Ammeraal Beltech Modular A/S
 Hjulmagervej 21
 DK-7100 Vejle

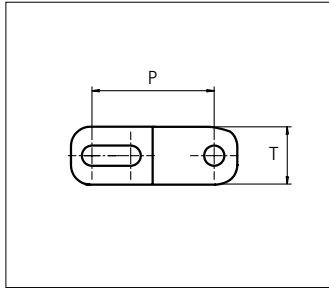
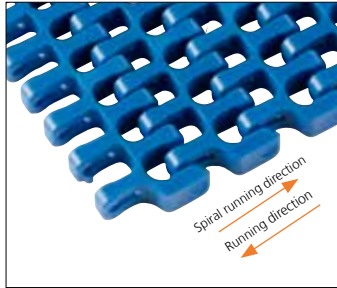
T +45 7572 3100
 F +45 7572 3348
admin@unichains.com
www.unichains.com

This information is subject to alteration due to continuous development. Ammeraal Beltech will not be held liable for the incorrect use of the above stated information. This information replaces previous information. All activities performed and services rendered by Ammeraal Beltech are subject to general terms and conditions of sale and delivery, as applied by its operating companies.



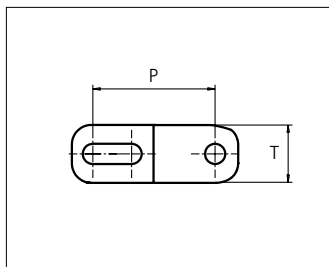
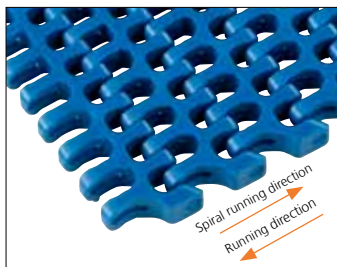
Plastic Modular Belt

Series uni Flex ASB

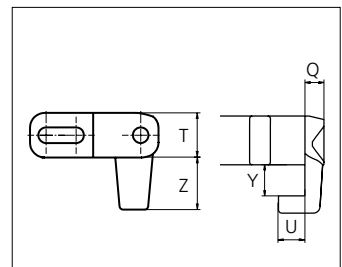
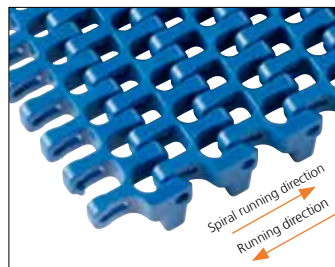


Sideflexing belt
 Nominal pitch: 25.4 mm (1.00 in)
 Surface type: Flat
 Surface opening: 43%
 Backflex radius: 25.0 mm (0.98 in)
 Pin diameter: 4.0 mm (0.16 in)
 Min. inside radius: R1.6 x belt width, R2.2 x belt width
 Curved surface makes perfect circle when Z9 tooth sprocket or 95 mm (3.74 in) flex diameter is applied.

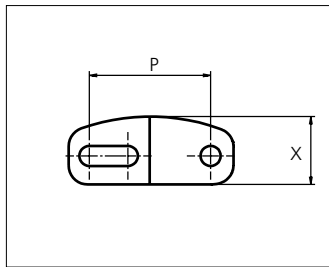
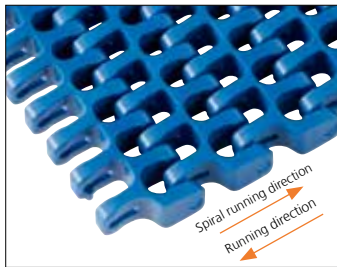
43% Open Radius 1.6



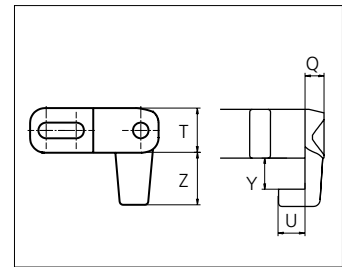
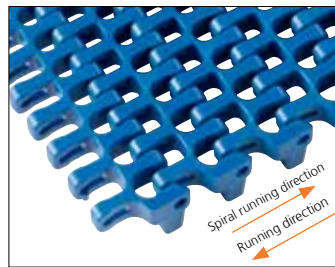
43% Open Radius 2.2



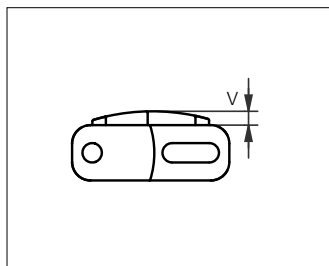
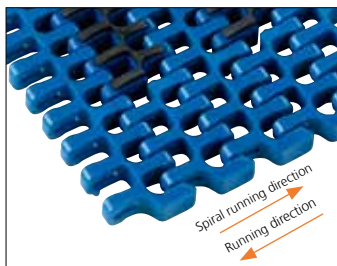
43% Open Tab Radius 2.2



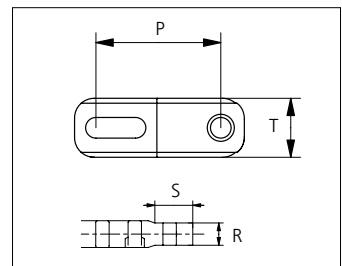
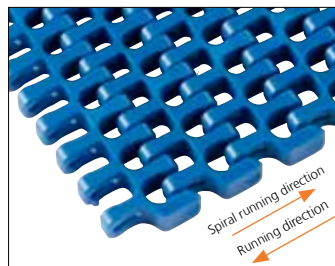
43% Open Curved Surface Radius 2.2



43% Open Curved Surface Tab Radius 2.2



43% Open Rubber Top Radius 2.2



43% Open Edge Radius 2.2

Min. indent for Rubber Top inside and outside in the belt is 44.0 mm (1.73 in).

	mm	in		mm	in		mm	in		mm	in
P (Nominal)	25.4	1.00	S	16.0	0.63	V	3.0	0.12	Z	14.0	0.55
Q	5.5	0.22	T	12.0	0.47	X	14.2	0.56	-	-	-
R	10.0	0.39	U	7.5	0.30	Y	9.0	0.35	-	-	-




STANDARD
SIDE FLEXING
PITCH 25.4 MM/1.00 IN

Type	Belt materials and colors	Standars pin materials and colors
43% Open Radius 1.6	POM-D B	 PA6.6 B
43% Open Radius 2.2	POM-D B W	
	PP B W G	
43% Open Tab Radius 2.2	POM-D B W	
	PP B W	
43% Open Curved Surface Radius 2.2	POM-D B W	
43% Open Tab Curved Surface Radius 2.2	POM-D B W	
43% Open Rubber Top Radius 2.2	PP B + 03 K	
	PP W + 03 N	
43% Open Edge Radius 2.2	POM-D B	
	PP B	

Non standard material and color: See uni Material and Color Overview.

Alternative pin and lock materials:

 Snap Pin A2: PP **W** PBT **LG** PA6.6 **B**

Belt width		Permissible tensile force (Belt/pin material)								Belt weight (Belt/pin material)				*Min. No. drive sprocket per shaft	Number of wear strips (Min. No.)	
		POM-D/PA6.6				PP/PA6.6				POM-D/PA6.6		PP/PA6.6			**Carry (pcs)	**Return (pcs)
		Straight sections		Curve sections		Straight sections		Curve sections		kg/m	lb/ft	kg/m	lb/ft			
mm	in	N	lbf	N	lbf	N	lbf	N	lbf	kg/m	lb/ft	kg/m	lb/ft			
149	5.9	2801	630	1200	270	1863	419	720	162	1.2	0.82	0.8	0.52	2	2	2
162	6.4	3046	685	1200	270	2025	455	720	162	1.3	0.89	0.8	0.57	2	2	2
226	8.9	4249	955	1200	270	2825	635	720	162	1.9	1.25	1.2	0.79	2	2	2
302	11.9	5678	1276	1200	270	3775	849	720	162	2.5	1.66	1.6	1.06	3	3	2
379	14.9	7125	1602	1200	270	4738	1065	720	162	3.1	2.09	2.0	1.32	3	3	2
455	17.9	8554	1923	1200	270	5688	1279	720	162	3.7	2.51	2.4	1.59	5	4	2
531	20.9	9983	2244	1600	360	6638	1492	960	216	4.4	2.93	2.8	1.86	5	4	2
608	23.9	11430	2570	1600	360	7600	1708	960	216	5.0	3.35	3.2	2.12	5	5	3
531	20.9	9983	2244	2040	459	6638	1492	1224	275	4.4	2.93	2.8	1.86	5	4	2
608	23.9	11430	2570	2040	459	7600	1708	1224	275	5.0	3.35	3.2	2.12	5	5	3
684	26.9	12859	2891	2040	459	8550	1922	1224	275	5.6	3.77	3.6	2.39	5	5	3
761	30.0	14307	3216	2040	459	9513	2138	1224	275	6.2	4.19	4.0	2.66	7	6	3
1449	57.0	27241	6124	2040	459	18113	4072	1224	275	11.9	7.99	7.5	5.06	11	10	5
1984	78.1	37299	8385	2040	459	24800	5575	1224	275	16.3	10.93	10.3	6.93	15	14	7

Additional standard belt widths are available in steps of 76.4 mm (3.01 in). Additional non-standard belt widths are available in steps of 12.7 mm (0.50 in).

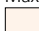
Additional standard belt widths are available in steps of 76.4 mm (3.01 in). Additional non-standard belt widths are available in steps of 12.7 mm (0.50 in).

General belt tolerance is +0/-0.4% at 23°C/73°F. For exact belt width contact Customer Service. Non standard belt width on request.

*Max. Load per Drive Sprocket. Belt material: POM-D 2000 N (450 lbf), PP 1100 N (247 lbf).

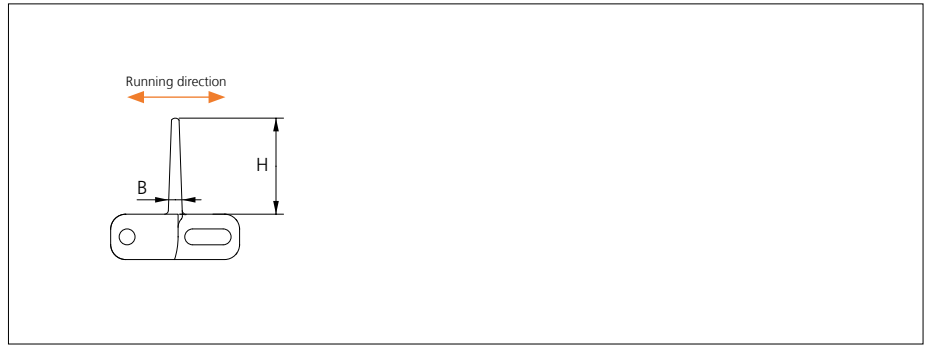
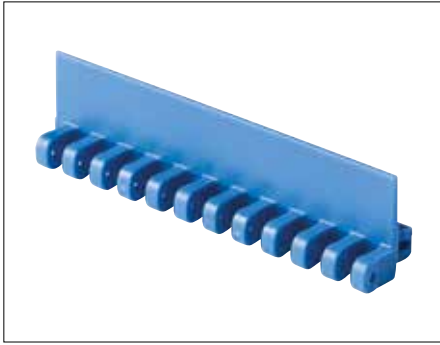
**Max. Spacing between wear strips, Carry: 152 mm (6 in); Return: 304 mm (12 in).

Max. Belt width with Flex ASB R1.6: 1296 mm (51.0 in).

 = Single Link

Accessories

Flight



Type	Flight Material & color	B		H		Link size	Width	
		mm	in	mm	in		mm	in
Flat	POM-D B W	3.7	0.15	25.4	1.00	K600	151.0	5.94

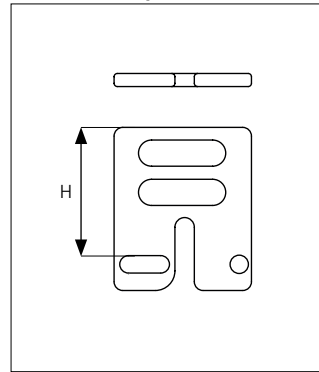
Non Standard material and color: See uni Material and Color Overview.

Accessories

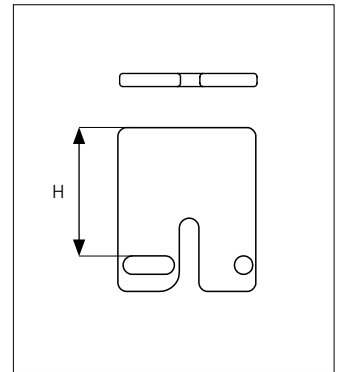
Side Guard



Side Guard Open



Side Guard

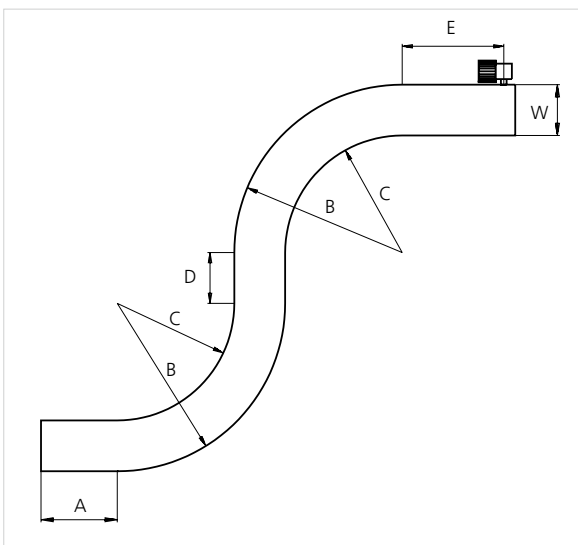


Type	Side Guard Material & color	H	
		mm	in
Side Guard Side Guard Open	POM-D B W	25.4	1.00

Min. indent for Side Guard is: 44.0 mm (1.73 in) and Increment 12.7 mm (0.50 in).

Non Standard material and color: See uni Material and Color Overview.

Design Guidelines



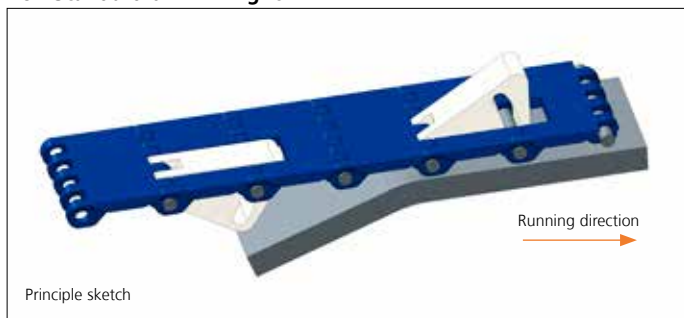
	43% Open Radius 2.2 43% Open Tab Radius 2.2 43% Open Curved Surface Radius 2.2 43% Open Curved Surface Tab Radius 2.2	uni Flex ASB 43% Open Radius 1.6
A	min 1.5 x W	min 1.5 x W
B	min 3.2 x W	min 2.6 x W
C	min 2.2 x W	min 1.6 x W
D	min 2 x W	
E	min 2 x W, min	
W	Belt width	

uni Flex ASB 43% Open Radius 1.6 can not be used in conveyors with both left and right turning curves. All curves have to turn in the same direction.

For min. conveyor dimensions please refer to sketch and diagram.

Accessories

Non Standard uni AmFlight



Other Non Standard option: See uni AmFlight Overview.

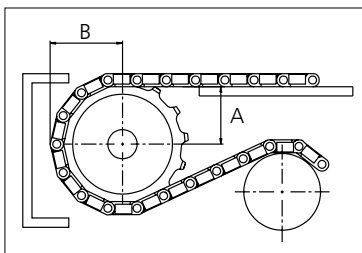
Sprocket

No. of teeth	Bore size												Overall diameter		Pitch diameter		Hub diameter		Dimension A		Dimension B		Single row/Two way	Double row/Two way	Molded	Machined
	Pilot Bore	in	0.75	0.79	0.98	1.00	1.18	1.25	1.50	1.57	2.36	2.50														
	mm	19.1	20.0	25.0	25.4	30.0	31.8	38.1	40.0	60.0	63.5	90.0	mm	in	mm	in	mm	in	mm	in						
Z07	x		●	●	●	●						58.0	2.28	58.5	2.30	40.8	1.61	20.4	0.80	35.2	1.39	x	x			
Z09	x			●	●	●	●					75.0	2.95	74.3	2.93	57.8	2.28	28.9	1.14	43.1	1.70	x	x			
Z12	x			●	●	●	●	■				100.0	3.94	98.1	3.86	82.8	3.26	41.4	1.63	55.1	2.17	x	x			
Z15	x				●	●	●	■	●	■		124.6	4.91	122.2	4.81	107.4	4.23	53.8	2.12	67.1	2.64	x	x			
Z18	x					●	●	●	●	■	■	149.3	5.88	146.3	5.76	132.1	5.20	66.0	2.60	79.2	3.12	x	x			

■ Machined sprocket



● Machined sprocket



Non standard material and color: See uni Material and Color Overview.

Other sprocket sizes are available upon request

Two-part sprocket are available upon request

Other bore sizes are available upon request

uni Retainer Rings: See uni Retainer Ring data sheet

Width of tooth = 7.0 mm (0.28 in)

Width of sprocket = 30.0 mm (1.18 in)

Max. load per sprocket shown does not take bore size into account.

Please also ensure that sufficient size shaft is chosen for corresponding load.

For correct sprocket position: See uni Assembly Instructions for uni Flex ASB.

For more detailed sprocket information, contact Customer Service.

uni Flex ASB/150828



Conveyor Belts



Seamless Belts



Modular Belts



Timing Belts



Transmission Belts



Fabrication & service

Expert advice, quality solutions and local service for all your belting needs
www.ammeraalbeltech.com

Ammeraal Beltech Modular A/S
 Hjulmagervej 21
 DK-7100 Vejle

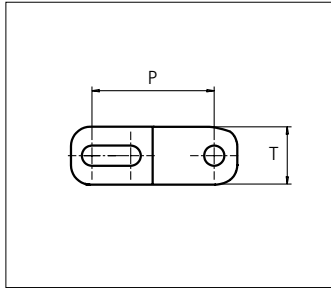
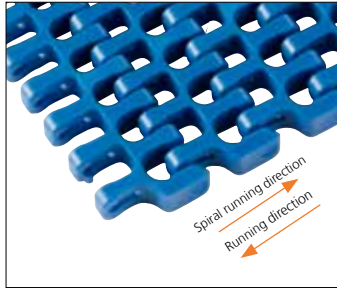
T +45 7572 3100
 F +45 7572 3348
 admin@unichains.com
 www.unichains.com

This information is subject to alteration due to continuous development. Ammeraal Beltech will not be held liable for the incorrect use of the above stated information. This information replaces previous information. All activities performed and services rendered by Ammeraal Beltech are subject to general terms and conditions of sale and delivery, as applied by its operating companies.



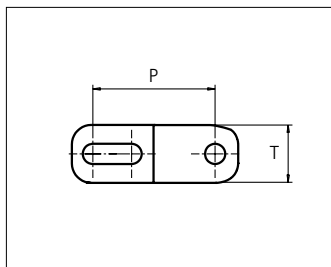
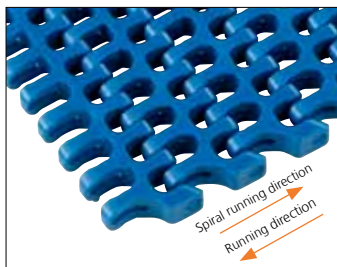
Plastic Modular Belt

Series uni Flex ASB

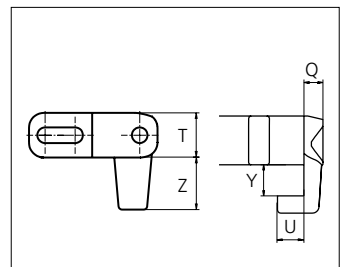
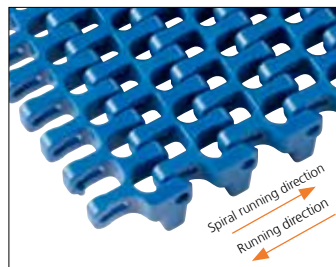


Sideflexing belt
 Nominal pitch: 25.4 mm (1.00 in)
 Surface type: Flat
 Surface opening: 43%
 Backflex radius: 25.0 mm (0.98 in)
 Pin diameter: 4.0 mm (0.16 in)
 Min. inside radius: R1.6 x belt width, R2.2 x belt width
 Curved surface makes perfect circle when Z9 tooth sprocket or 95 mm (3.74 in) flex diameter is applied.

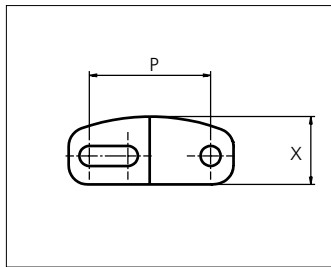
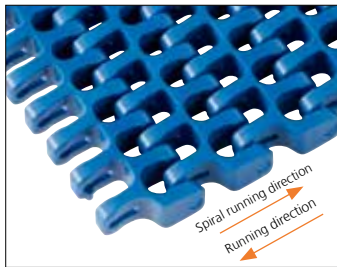
43% Open Radius 1.6



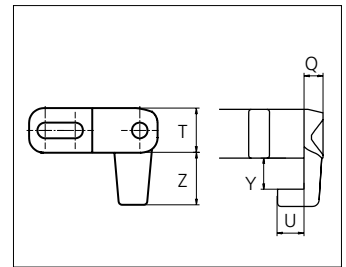
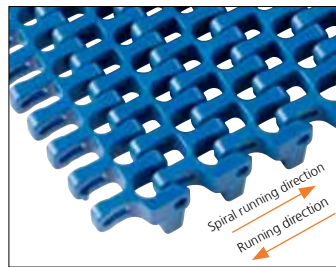
43% Open Radius 2.2



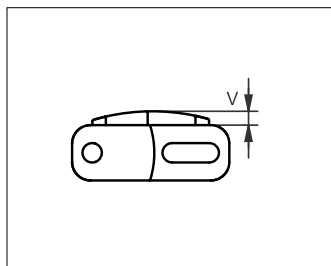
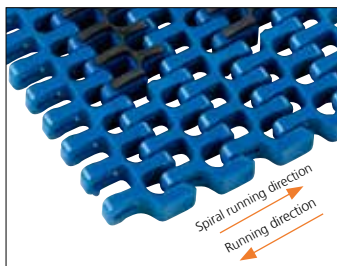
43% Open Tab Radius 2.2



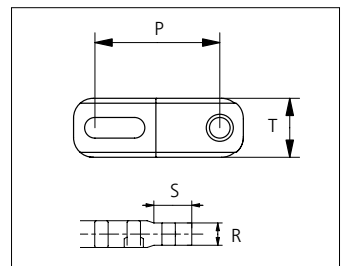
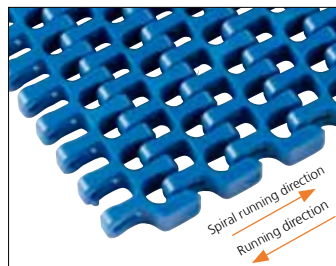
43% Open Curved Surface Radius 2.2



43% Open Curved Surface Tab Radius 2.2



43% Open Rubber Top Radius 2.2




43% Open Edge Radius 2.2

Min. indent for Rubber Top inside and outside in the belt is 44.0 mm (1.73 in).

	mm	in		mm	in		mm	in		mm	in
P (Nominal)	25.4	1.00	S	16.0	0.63	V	3.0	0.12	Z	14.0	0.55
Q	5.5	0.22	T	12.0	0.47	X	14.2	0.56	-	-	-
R	10.0	0.39	U	7.5	0.30	Y	9.0	0.35	-	-	-




STANDARD
SIDE FLEXING
PITCH 25.4 MM/1.00 IN

Type	Belt materials and colors	Standars pin materials and colors
43% Open Radius 1.6	POM-D B	 PA6.6 B
43% Open Radius 2.2	POM-D B W	
	PP B W G	
43% Open Tab Radius 2.2	POM-D B W	
	PP B W	
43% Open Curved Surface Radius 2.2	POM-D B W	
43% Open Tab Curved Surface Radius 2.2	POM-D B W	
43% Open Rubber Top Radius 2.2	PP B + 03 K	
	PP W + 03 N	
43% Open Edge Radius 2.2	POM-D B	
	PP B	

Non standard material and color: See uni Material and Color Overview.

Alternative pin and lock materials:

 Snap Pin A2: PP **W** PBT **LG** PA6.6 **B**

Belt width		Permissible tensile force (Belt/pin material)								Belt weight (Belt/pin material)				*Min. No. drive sprocket per shaft	Number of wear strips (Min. No.)	
		POM-D/PA6.6				PP/PA6.6				POM-D/PA6.6		PP/PA6.6			**Carry (pcs)	**Return (pcs)
		Straight sections		Curve sections		Straight sections		Curve sections		kg/m	lb/ft	kg/m	lb/ft			
mm	in	N	lbf	N	lbf	N	lbf	N	lbf	kg/m	lb/ft	kg/m	lb/ft			
149	5.9	2801	630	1200	270	1863	419	720	162	1.2	0.82	0.8	0.52	2	2	2
162	6.4	3046	685	1200	270	2025	455	720	162	1.3	0.89	0.8	0.57	2	2	2
226	8.9	4249	955	1200	270	2825	635	720	162	1.9	1.25	1.2	0.79	2	2	2
302	11.9	5678	1276	1200	270	3775	849	720	162	2.5	1.66	1.6	1.06	3	3	2
379	14.9	7125	1602	1200	270	4738	1065	720	162	3.1	2.09	2.0	1.32	3	3	2
455	17.9	8554	1923	1200	270	5688	1279	720	162	3.7	2.51	2.4	1.59	5	4	2
531	20.9	9983	2244	1600	360	6638	1492	960	216	4.4	2.93	2.8	1.86	5	4	2
608	23.9	11430	2570	1600	360	7600	1708	960	216	5.0	3.35	3.2	2.12	5	5	3
531	20.9	9983	2244	2040	459	6638	1492	1224	275	4.4	2.93	2.8	1.86	5	4	2
608	23.9	11430	2570	2040	459	7600	1708	1224	275	5.0	3.35	3.2	2.12	5	5	3
684	26.9	12859	2891	2040	459	8550	1922	1224	275	5.6	3.77	3.6	2.39	5	5	3
761	30.0	14307	3216	2040	459	9513	2138	1224	275	6.2	4.19	4.0	2.66	7	6	3
1449	57.0	27241	6124	2040	459	18113	4072	1224	275	11.9	7.99	7.5	5.06	11	10	5
1984	78.1	37299	8385	2040	459	24800	5575	1224	275	16.3	10.93	10.3	6.93	15	14	7

Additional standard belt widths are available in steps of 76.4 mm (3.01 in). Additional non-standard belt widths are available in steps of 12.7 mm (0.50 in).

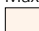
Additional standard belt widths are available in steps of 76.4 mm (3.01 in). Additional non-standard belt widths are available in steps of 12.7 mm (0.50 in).

General belt tolerance is +0/-0.4% at 23°C/73°F. For exact belt width contact Customer Service. Non standard belt width on request.

*Max. Load per Drive Sprocket. Belt material: POM-D 2000 N (450 lbf), PP 1100 N (247 lbf).

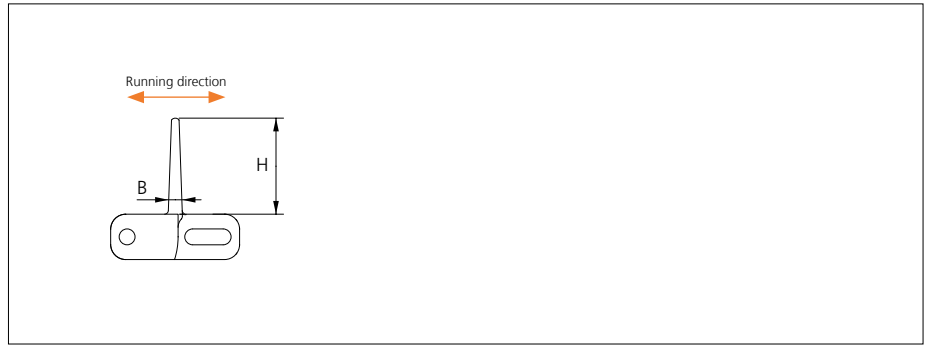
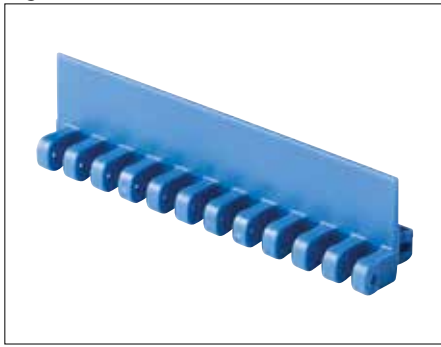
**Max. Spacing between wear strips, Carry: 152 mm (6 in); Return: 304 mm (12 in).

Max. Belt width with Flex ASB R1.6: 1296 mm (51.0 in).

 = Single Link

Accessories

Flight



Type	Flight Material & color	B		H		Link size	Width	
		mm	in	mm	in		mm	in
Flat	POM-D B W	3.7	0.15	25.4	1.00	K600	151.0	5.94

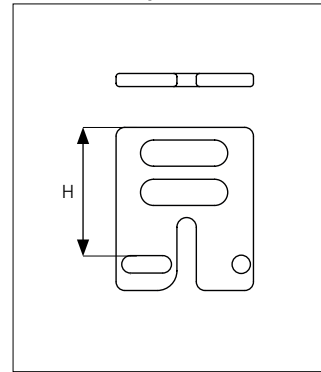
Non Standard material and color: See uni Material and Color Overview.

Accessories

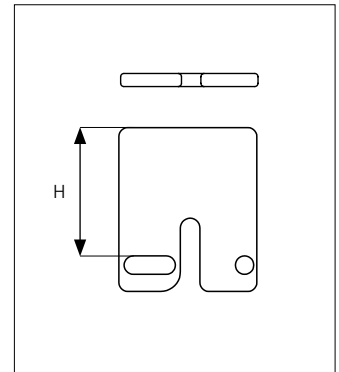
Side Guard



Side Guard Open



Side Guard

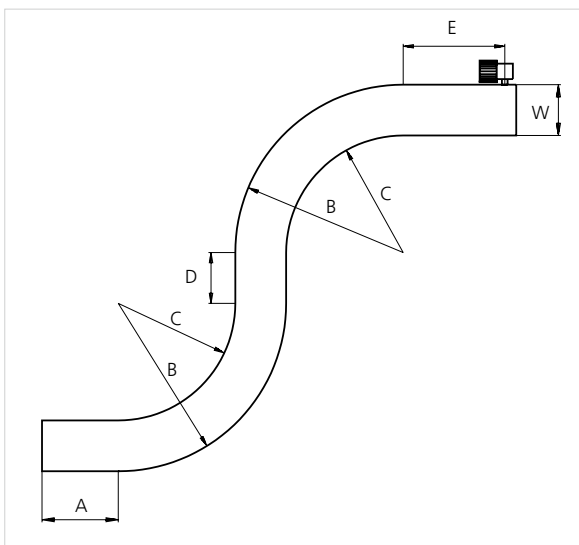


Type	Side Guard Material & color	H	
		mm	in
Side Guard Side Guard Open	POM-D B W	25.4	1.00

Min. indent for Side Guard is: 44.0 mm (1.73 in) and Increment 12.7 mm (0.50 in).

Non Standard material and color: See uni Material and Color Overview.

Design Guidelines



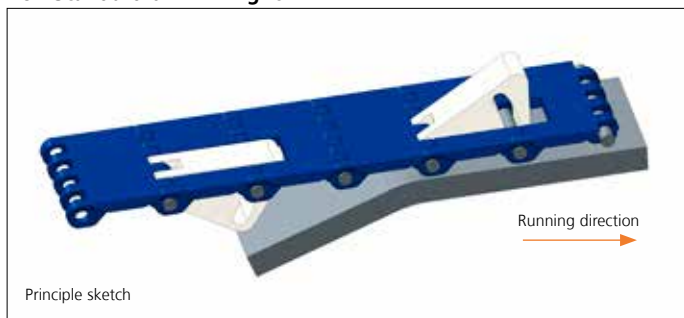
	43% Open Radius 2.2 43% Open Tab Radius 2.2 43% Open Curved Surface Radius 2.2 43% Open Curved Surface Tab Radius 2.2	uni Flex ASB 43% Open Radius 1.6
A	min 1.5 x W	min 1.5 x W
B	min 3.2 x W	min 2.6 x W
C	min 2.2 x W	min 1.6 x W
D	min 2 x W	
E	min 2 x W, min	
W	Belt width	

uni Flex ASB 43% Open Radius 1.6 can not be used in conveyors with both left and right turning curves. All curves have to turn in the same direction.

For min. conveyor dimensions please refer to sketch and diagram.

Accessories

Non Standard uni AmFlight



Other Non Standard option: See uni AmFlight Overview.

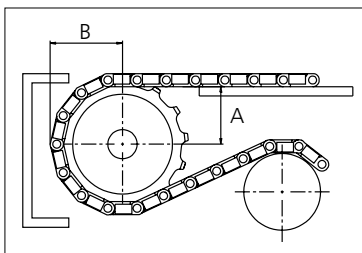
Sprocket

No. of teeth	Bore size												Overall diameter		Pitch diameter		Hub diameter		Dimension A		Dimension B		Single row/Two way	Double row/Two way	Molded	Machined
	Pilot Bore																									
	in	mm	19.1	20.0	25.0	25.4	30.0	31.8	38.1	40.0	60.0	63.5	90.0	mm	in	mm	in	mm	in	mm	in	mm	in	PA6 LG	PA6 N	
Z07	x			●	●	●	●						58.0	2.28	58.5	2.30	40.8	1.61	20.4	0.80	35.2	1.39	x	x		
Z09	x			●	●	●	●						75.0	2.95	74.3	2.93	57.8	2.28	28.9	1.14	43.1	1.70	x	x		
Z12	x			●	●	●	●	■					100.0	3.94	98.1	3.86	82.8	3.26	41.4	1.63	55.1	2.17	x	x		
Z15	x				●	●	●	■	●	■			124.6	4.91	122.2	4.81	107.4	4.23	53.8	2.12	67.1	2.64	x	x		
Z18	x					●	●	●	●	■	■		149.3	5.88	146.3	5.76	132.1	5.20	66.0	2.60	79.2	3.12	x	x		

Machined sprocket



Machined sprocket



Non standard material and color: See uni Material and Color Overview.

Other sprocket sizes are available upon request

Two-part sprocket are available upon request

Other bore sizes are available upon request

uni Retainer Rings: See uni Retainer Ring data sheet

Width of tooth = 7.0 mm (0.28 in)

Width of sprocket = 30.0 mm (1.18 in)

Max. load per sprocket shown does not take bore size into account.

Please also ensure that sufficient size shaft is chosen for corresponding load.

For correct sprocket position: See uni Assembly Instructions for uni Flex ASB.

For more detailed sprocket information, contact Customer Service.

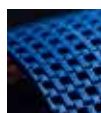
uni Flex ASB/150828



Conveyor Belts



Seamless Belts



Modular Belts



Timing Belts



Transmission Belts



Fabrication & service

Expert advice, quality solutions and local service for all your belting needs
www.ammeraalbeltech.com

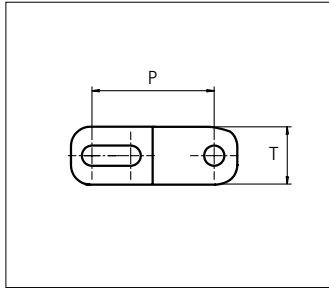
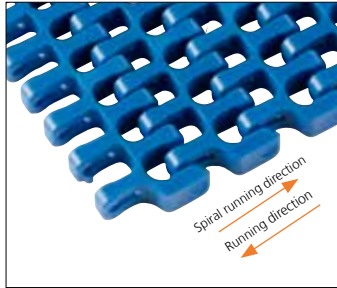
Ammeraal Beltech Modular A/S
 Hjulmagervej 21
 DK-7100 Vejle

T +45 7572 3100
 F +45 7572 3348
admin@unichains.com
www.unichains.com

This information is subject to alteration due to continuous development. Ammeraal Beltech will not be held liable for the incorrect use of the above stated information. This information replaces previous information. All activities performed and services rendered by Ammeraal Beltech are subject to general terms and conditions of sale and delivery, as applied by its operating companies.

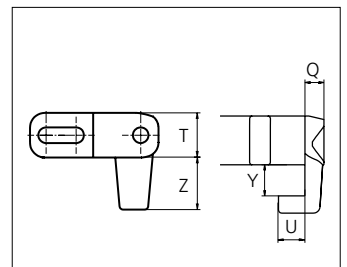
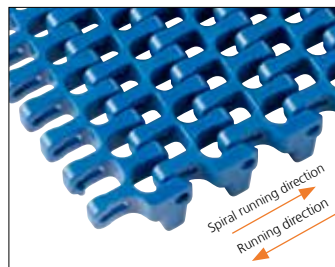
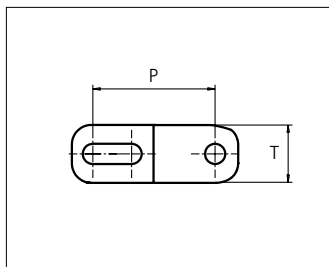
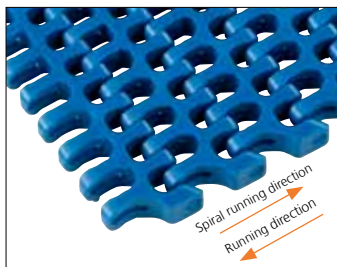
Plastic Modular Belt

Series uni Flex ASB



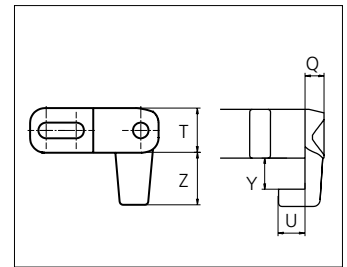
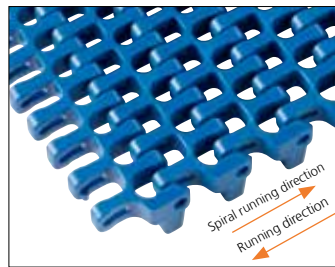
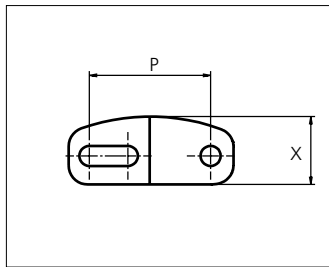
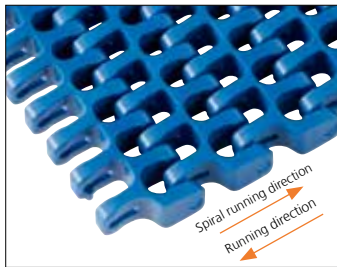
Sideflexing belt
 Nominal pitch: 25.4 mm (1.00 in)
 Surface type: Flat
 Surface opening: 43%
 Backflex radius: 25.0 mm (0.98 in)
 Pin diameter: 4.0 mm (0.16 in)
 Min. inside radius: R1.6 x belt width, R2.2 x belt width
 Curved surface makes perfect circle when Z9 tooth sprocket or 95 mm (3.74 in) flex diameter is applied.

43% Open Radius 1.6



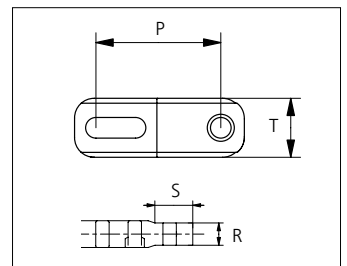
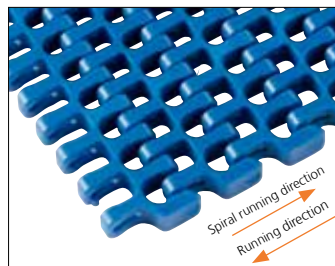
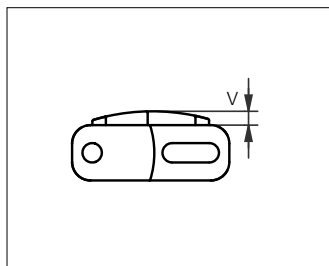
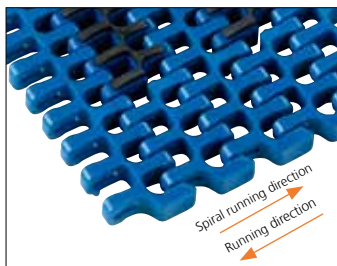
43% Open Radius 2.2

43% Open Tab Radius 2.2



43% Open Curved Surface Radius 2.2

43% Open Curved Surface Tab Radius 2.2



43% Open Rubber Top Radius 2.2

43% Open Edge Radius 2.2


Min. indent for Rubber Top inside and outside in the belt is 44.0 mm (1.73 in).

	mm	in		mm	in		mm	in		mm	in
P (Nominal)	25.4	1.00	S	16.0	0.63	V	3.0	0.12	Z	14.0	0.55
Q	5.5	0.22	T	12.0	0.47	X	14.2	0.56	-	-	-
R	10.0	0.39	U	7.5	0.30	Y	9.0	0.35	-	-	-

Type	Belt materials and colors	Standars pin materials and colors
43% Open Radius 1.6	POM-D B	 PA6.6 B
43% Open Radius 2.2	POM-D B W	
	PP B W G	
43% Open Tab Radius 2.2	POM-D B W	
	PP B W	
43% Open Curved Surface Radius 2.2	POM-D B W	
43% Open Tab Curved Surface Radius 2.2	POM-D B W	
43% Open Rubber Top Radius 2.2	PP B + 03 K	
	PP W + 03 N	
43% Open Edge Radius 2.2	POM-D B	
	PP B	

Non standard material and color: See uni Material and Color Overview.

Alternative pin and lock materials:

 Snap Pin A2: PP **W** PBT **LG** PA6.6 **B**

Belt width		Permissible tensile force (Belt/pin material)								Belt weight (Belt/pin material)				*Min. No. drive sprocket per shaft	Number of wear strips (Min. No.)	
		POM-D/PA6.6				PP/PA6.6				POM-D/PA6.6		PP/PA6.6			**Carry (pcs)	**Return (pcs)
		Straight sections		Curve sections		Straight sections		Curve sections		kg/m	lb/ft	kg/m	lb/ft			
mm	in	N	lbf	N	lbf	N	lbf	N	lbf	kg/m	lb/ft	kg/m	lb/ft			
149	5.9	2801	630	1200	270	1863	419	720	162	1.2	0.82	0.8	0.52	2	2	2
162	6.4	3046	685	1200	270	2025	455	720	162	1.3	0.89	0.8	0.57	2	2	2
226	8.9	4249	955	1200	270	2825	635	720	162	1.9	1.25	1.2	0.79	2	2	2
302	11.9	5678	1276	1200	270	3775	849	720	162	2.5	1.66	1.6	1.06	3	3	2
379	14.9	7125	1602	1200	270	4738	1065	720	162	3.1	2.09	2.0	1.32	3	3	2
455	17.9	8554	1923	1200	270	5688	1279	720	162	3.7	2.51	2.4	1.59	5	4	2
531	20.9	9983	2244	1600	360	6638	1492	960	216	4.4	2.93	2.8	1.86	5	4	2
608	23.9	11430	2570	1600	360	7600	1708	960	216	5.0	3.35	3.2	2.12	5	5	3
531	20.9	9983	2244	2040	459	6638	1492	1224	275	4.4	2.93	2.8	1.86	5	4	2
608	23.9	11430	2570	2040	459	7600	1708	1224	275	5.0	3.35	3.2	2.12	5	5	3
684	26.9	12859	2891	2040	459	8550	1922	1224	275	5.6	3.77	3.6	2.39	5	5	3
761	30.0	14307	3216	2040	459	9513	2138	1224	275	6.2	4.19	4.0	2.66	7	6	3
1449	57.0	27241	6124	2040	459	18113	4072	1224	275	11.9	7.99	7.5	5.06	11	10	5
1984	78.1	37299	8385	2040	459	24800	5575	1224	275	16.3	10.93	10.3	6.93	15	14	7

Additional standard belt widths are available in steps of 76.4 mm (3.01 in). Additional non-standard belt widths are available in steps of 12.7 mm (0.50 in).

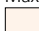
Additional standard belt widths are available in steps of 76.4 mm (3.01 in). Additional non-standard belt widths are available in steps of 12.7 mm (0.50 in).

General belt tolerance is +0/-0.4% at 23°C/73°F. For exact belt width contact Customer Service. Non standard belt width on request.

*Max. Load per Drive Sprocket. Belt material: POM-D 2000 N (450 lbf), PP 1100 N (247 lbf).

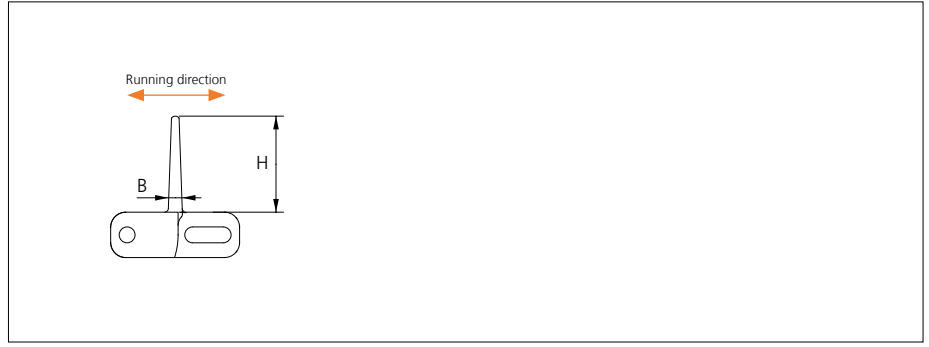
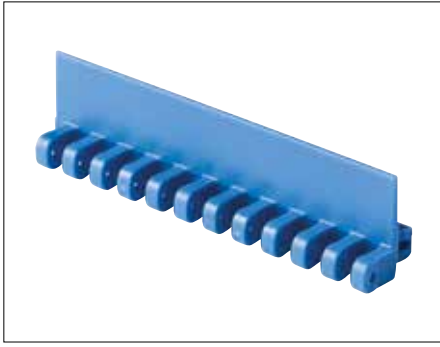
**Max. Spacing between wear strips, Carry: 152 mm (6 in); Return: 304 mm (12 in).

Max. Belt width with Flex ASB R1.6: 1296 mm (51.0 in).

 = Single Link

Accessories

Flight



Type	Flight Material & color	B		H		Link size	Width	
		mm	in	mm	in		mm	in
Flat	POM-D B W	3.7	0.15	25.4	1.00	K600	151.0	5.94

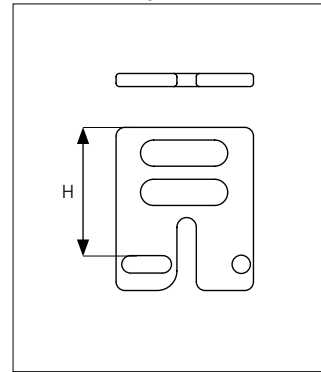
Non Standard material and color: See uni Material and Color Overview.

Accessories

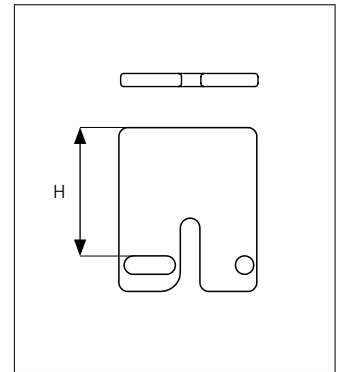
Side Guard



Side Guard Open



Side Guard

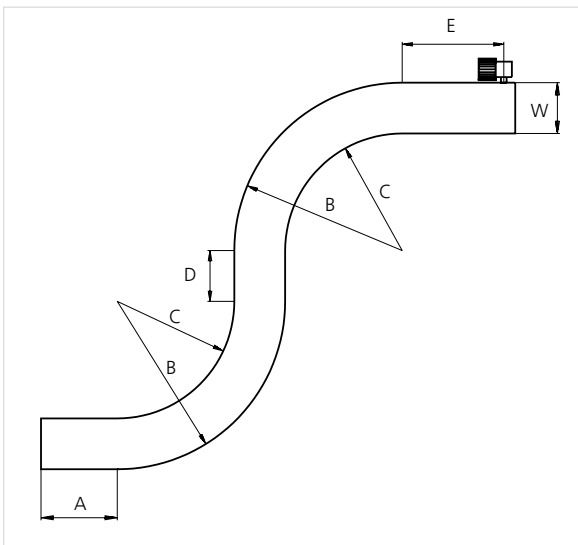


Type	Side Guard Material & color	H	
		mm	in
Side Guard Side Guard Open	POM-D B W	25.4	1.00

Min. indent for Side Guard is: 44.0 mm (1.73 in) and Increment 12.7 mm (0.50 in).

Non Standard material and color: See uni Material and Color Overview.

Design Guidelines



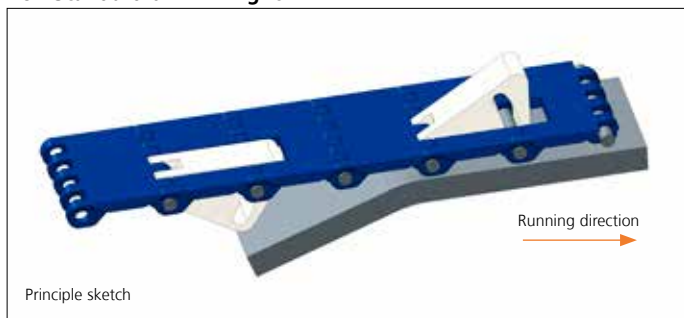
	43% Open Radius 2.2 43% Open Tab Radius 2.2 43% Open Curved Surface Radius 2.2 43% Open Curved Surface Tab Radius 2.2	uni Flex ASB 43% Open Radius 1.6
A	min 1.5 x W	min 1.5 x W
B	min 3.2 x W	min 2.6 x W
C	min 2.2 x W	min 1.6 x W
D	min 2 x W	
E	min 2 x W, min	
W	Belt width	

uni Flex ASB 43% Open Radius 1.6 can not be used in conveyors with both left and right turning curves. All curves have to turn in the same direction.

For min. conveyor dimensions please refer to sketch and diagram.

Accessories

Non Standard uni AmFlight



Other Non Standard option: See uni AmFlight Overview.

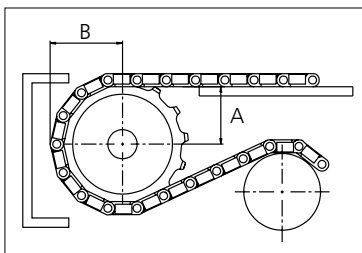
Sprocket

No. of teeth	Bore size												Overall diameter		Pitch diameter		Hub diameter		Dimension A		Dimension B		Single row/Two way	Double row/Two way	Molded	Machined
	Pilot Bore																									
	in	mm	19.1	20.0	25.0	25.4	30.0	31.8	38.1	40.0	60.0	63.5	90.0	mm	in	mm	in	mm	in	mm	in	mm	in	PA6 LG	PA6 N	
Z07	x			●	●	●	●						58.0	2.28	58.5	2.30	40.8	1.61	20.4	0.80	35.2	1.39	x	x		
Z09	x			●	●	●	●						75.0	2.95	74.3	2.93	57.8	2.28	28.9	1.14	43.1	1.70	x	x		
Z12	x			●	●	●	●	■					100.0	3.94	98.1	3.86	82.8	3.26	41.4	1.63	55.1	2.17	x	x		
Z15	x				●	●	●	■	●	■			124.6	4.91	122.2	4.81	107.4	4.23	53.8	2.12	67.1	2.64	x	x		
Z18	x					●	●	●	●	■	■		149.3	5.88	146.3	5.76	132.1	5.20	66.0	2.60	79.2	3.12	x	x		

Machined sprocket



Machined sprocket



Non standard material and color: See uni Material and Color Overview.

Other sprocket sizes are available upon request

Two-part sprocket are available upon request

Other bore sizes are available upon request

uni Retainer Rings: See uni Retainer Ring data sheet

Width of tooth = 7.0 mm (0.28 in)

Width of sprocket = 30.0 mm (1.18 in)

Max. load per sprocket shown does not take bore size into account.

Please also ensure that sufficient size shaft is chosen for corresponding load.

For correct sprocket position: See uni Assembly Instructions for uni Flex ASB.

For more detailed sprocket information, contact Customer Service.

uni Flex ASB/150828



Conveyor Belts



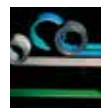
Seamless Belts



Modular Belts



Timing Belts



Transmission Belts



Fabrication & service

Expert advice, quality solutions and local service for all your belting needs
www.ammeraalbeltech.com

Ammeraal Beltech Modular A/S
 Hjulmagervej 21
 DK-7100 Vejle

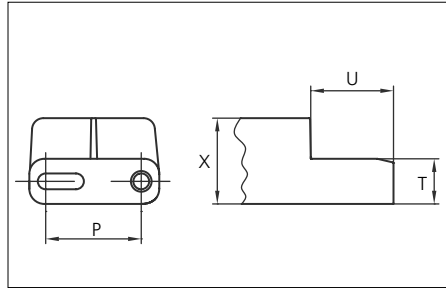
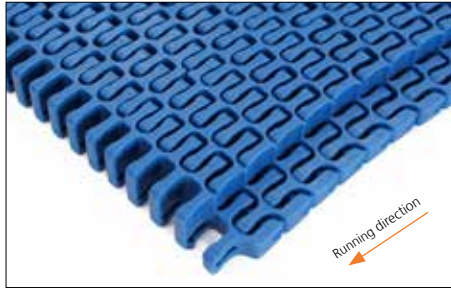
T +45 7572 3100
 F +45 7572 3348
 admin@unichains.com
 www.unichains.com

This information is subject to alteration due to continuous development. Ammeraal Beltech will not be held liable for the incorrect use of the above stated information. This information replaces previous information. All activities performed and services rendered by Ammeraal Beltech are subject to general terms and conditions of sale and delivery, as applied by its operating companies.



Plastic Modular Belt

Series **uni Flex ASB** Type **43% Open Top Radius 2.2**



Sideflexing belt
 Nominal pitch: 25.4 mm (1.00 in)
 Surface type: Top
 Surface opening: 43%
 Backflex radius: 30.0 mm (1.18 in)
 Pin diameter: 4.0 mm (0.16 in)
 Min. inside radius: R2.2 x belt width

Belt material & color	POM-D W B	PP B	mm	in		mm	in	
Pin and lock material & color	PA6.6 B		P (Nominal)	25.4	1.00	U	22.0	0.87
			T	12.0	0.47	X	22.8	0.90

Non standard material and color: See uni Material and Color Overview.

Alternative pin and lock materials: Snap Pin A2: PP **W** PBT **LG**

Belt width		Permissible tensile force (Belt/pin material)								Belt weight (Belt/pin material)				*Min. No. drive sprocket per shaft	Number of wear strips (Min. No.)	
		POM-D/PA6.6				PP/PA6.6				POM-D/PA6.6		PP/PA6.6			**Carry (pcs)	**Return (pcs)
		Straight sections		Curve sections		Straight sections		Curve sections		kg/m	lb/ft	kg/m	lb/ft			
mm	in	N	lbf	N	lbf	N	lbf	N	lbf	kg/m	lb/ft	kg/m	lb/ft			
149	5.9	2801	630	1200	270	1863	419	720	162	2.5	1.70	1.6	1.08	2	2	2
226	8.9	4249	955	1200	270	2825	635	720	162	3.8	2.58	2.4	1.64	2	2	2
302	11.9	5678	1276	1200	270	3775	849	720	162	5.1	3.45	3.3	2.19	3	2	2
379	14.9	7125	1602	1200	270	4738	1065	720	162	6.4	4.33	4.1	2.75	3	2	2
455	17.9	8554	1923	1200	270	5688	1279	720	162	7.7	5.20	4.9	3.30	5	2	2
531	20.9	9983	2244	1600	360	6638	1492	960	216	9.0	6.07	5.7	3.85	5	2	2
608	23.9	11430	2570	1600	360	7600	1708	960	216	10.3	6.95	6.6	4.41	5	2	2
531	20.9	9983	2244	2040	459	6638	1492	1224	275	9.0	6.07	5.7	3.85	5	3	3
608	23.9	11430	2570	2040	459	7600	1708	1224	275	10.3	6.95	6.6	4.41	5	3	3
684	26.9	12859	2891	2040	459	8550	1922	1224	275	11.6	7.81	7.4	4.96	5	3	3
761	30.0	14307	3216	2040	459	9513	2138	1224	275	12.9	8.69	8.2	5.52	7	3	3
837	33.0	15736	3537	2040	459	10463	2352	1224	275	14.2	9.56	9.0	6.08	7	3	3
914	36.0	17183	3863	2040	459	11425	2568	1224	275	15.5	10.44	9.9	6.63	7	3	3
990	39.0	18612	4184	2040	459	12375	2782	1224	275	16.8	11.31	10.7	7.19	7	3	3
1066	42.0	20041	4505	2040	459	13325	2995	1224	275	18.1	12.18	11.5	7.74	9	3	3

General belt tolerance is +0/-0.4% at 23°C/73°F. For exact belt width contact Customer Service. Non standard belt width on request.

*Max. Load per Drive Sprocket. Belt material: POM-D 2000 N (450 lbf), PP 1100 N (247 lbf).

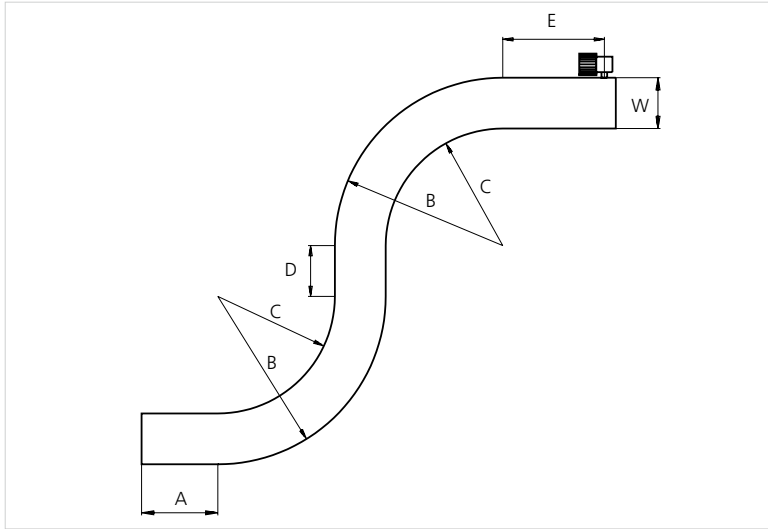


STANDARD

SIDE FLEXING

PITCH 25.4 MM/1.00 IN

Design Guidelines



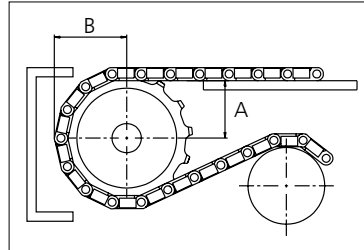
43% Open Top Radius 2.2	
A	min. 1.5 x W
B	min 3.2 x W
C	min 2.2 x W
D	min 2 x W
E	min 2 x W, min.
W	Belt width

Sprocket

No. of teeth	Bore size													Overall diameter		Pitch diameter		Hub diameter		Dimension A		Dimension B		Single row/Two way	Double row/Two way	Molded	Machined					
	Pilot Bore	Bore size																														
	mm	in	0.75	0.79	0.98	1.00	1.18	1.25	1.50	1.57	2.36	2.50	3.54	mm	in	mm	in	mm	in	mm	in	mm	in	mm	in	mm	in	mm	in	mm	in	mm
Z07	x			●	●	●	●						58.0	2.28	58.5	2.30	40.8	1.61	20.4	0.80	35.2	1.39		x		x						
Z09	x			●	●	●	●	●					75.0	2.95	74.3	2.93	57.8	2.28	28.9	1.14	43.1	1.70		x		x						
Z12	x			●	●	●	●	●	■				100.0	3.94	98.1	3.86	82.8	3.26	41.4	1.63	55.1	2.17		x		x						
Z15	x				●	●	●	●	■	■	■		124.6	4.91	122.2	4.81	107.4	4.23	53.8	2.12	67.1	2.64		x		x						
Z18	x					●	●	●	●	■	■	■	149.3	5.88	146.3	5.76	132.1	5.20	66.0	2.60	79.2	3.12		x		x						

■ Machined sprocket

● Machined sprocket



Non standard material and color: See uni Material and Color Overview.

Other sprocket sizes are available upon request
 Two-part sprocket are available upon request
 Other bore sizes are available upon request
 uni Retainer Rings: See uni Retainer Ring data sheet
 Width of tooth = 7.0 mm (0.28 in)
 Width of sprocket = 30.0 mm (1.18 in)

Max. load per sprocket shown does not take bore size into account.
 Please also ensure that sufficient size shaft is chosen for corresponding load.

For correct sprocket position: See uni Assembly Instructions for uni Flex ASB.
 For more detailed sprocket information, contact Customer Service.

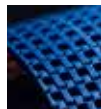
uni Flex ASB 43% Open Top Radius 2.2/150203



Conveyor Belts



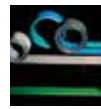
Seamless Belts



Modular Belts



Timing Belts



Transmission Belts



Fabrication & service

Expert advice, quality solutions and local service for all your belting needs
www.ammeraalbeltech.com

Ammeraal Beltech Modular A/S
 Hjulmagervej 21
 DK-7100 Vejle

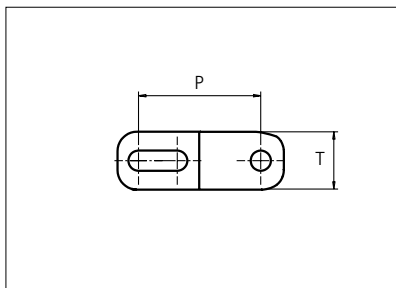
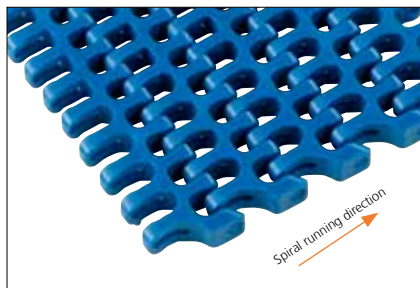
T +45 7572 3100
 F +45 7572 3348
 admin@unichains.com
 www.unichains.com

This information is subject to alteration due to continuous development. Ammeraal Beltech will not be held liable for the incorrect use of the above stated information. This information replaces previous information. All activities performed and services rendered by Ammeraal Beltech are subject to general terms and conditions of sale and delivery, as applied by its operating companies.



Plastic Modular Belt

Series **uni Flex ASB** Type **43% Open Radius 2.5/3.0/3.5/4.0**



Sideflexing belt
 Nominal pitch: 25.4 mm (1.00 in)
 Surface type: Flat
 Surface opening: 43%
 Backflex radius: 25.0 mm (0.98 in)
 Pin diameter: 4.0 mm (0.16 in)
 Min. inside radius: 2.5 / 3.0 / 3.5 / 4.0 x belt width

Recommended Belt material & color	POM-D B	mm	in
Recommended Pin material & color	PA6.6 B	P (Nominal)	25.4 / 1.00
		T	12.0 / 0.47

Other non standard material and color: See uni Material and Color Overview.

Alternative pin and lock: Snap Pin A2

Belt width		Permissible tensile force (Belt/pin material)								Belt weight (Belt/pin material)				*Min. No. drive sprocket per shaft	Number of wear strips (Min. No.)	
		POM-D/PA6.6				PP/PA6.6				POM-D/PA6.6		PP/PA6.6			**Carry (pcs)	**Return (pcs)
		Straight sections		Curve sections		Straight sections		Curve sections		kg/m	lb/ft	kg/m	lb/ft			
mm	in	N	lbf	N	lbf	N	lbf	N	lbf	kg/m	lb/ft	kg/m	lb/ft			
149	5.9	2801	630	1200	270	1863	419	720	162	1.2	0.82	0.8	0.52	2	2	2
226	8.9	4249	955	1200	270	2825	635	720	162	1.9	1.25	1.2	0.79	2	2	2
302	11.9	5678	1276	1200	270	3775	849	720	162	2.5	1.66	1.6	1.06	3	3	2
379	14.9	7125	1602	1200	270	4738	1065	720	162	3.1	2.09	2.0	1.32	3	3	2
455	17.9	8554	1923	1200	270	5688	1279	720	162	3.7	2.51	2.4	1.59	5	4	2
531	20.9	9983	2244	1600	360	6638	1492	960	216	4.4	2.93	2.8	1.86	5	4	2
608	23.9	11430	2570	1600	360	7600	1708	960	216	5.0	3.35	3.2	2.12	5	5	3
531	20.9	9983	2244	2040	459	6638	1492	1224	275	4.4	2.93	2.8	1.86	5	4	2
608	23.9	11430	2570	2040	459	7600	1708	1224	275	5.0	3.35	3.2	2.12	5	5	3
684	26.9	12859	2891	2040	459	8550	1922	1224	275	5.6	3.77	3.6	2.39	5	5	3
761	30.0	14307	3216	2040	459	9513	2138	1224	275	6.2	4.19	4.0	2.66	7	6	3
837	33.0	15736	3537	2040	459	10463	2352	1224	275	6.9	4.61	4.4	2.93	7	6	3

Additional standard belt widths are available in steps of 76.4 mm (3.01 in). Additional non-standard belt widths are available in steps of 12.7 mm (0.50 in).

1449	57.0	27241	6124	2040	459	18113	4072	1224	275	11.9	7.99	7.5	5.06	11	10	5
------	------	-------	------	------	-----	-------	------	------	-----	------	------	-----	------	----	----	---

Additional standard belt widths are available in steps of 76.4 mm (3.01 in). Additional non-standard belt widths are available in steps of 12.7 mm (0.50 in).

1984	78.1	37299	8385	2040	459	24800	5575	1224	275	16.3	10.93	10.3	6.93	15	14	7
------	------	-------	------	------	-----	-------	------	------	-----	------	-------	------	------	----	----	---

General belt tolerance is +0/-0.4% at 23°C/73°F. For exact belt width contact Customer Service. Non standard belt width on request.

*Max. Load per Drive Sprocket. Belt material: POM-D 2000 N (450 lbf), PP 1100 N (247 lbf).

**Max. Spacing between wear strips, Carry: 152 mm (6 in); Return: 304 mm (12 in).

Max. Belt width with Flex ASB R1.6: 1296 mm (51.0 in).

= Single Link



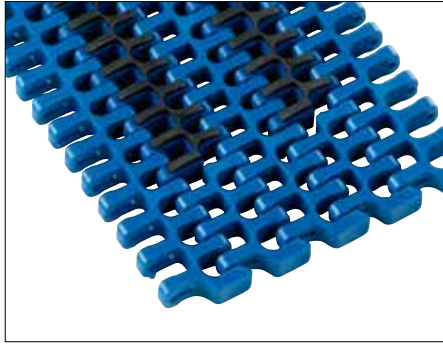
NON STANDARD

SIDE FLEXING

PITCH 25.4 MM/1.00 IN

Accessories

Rubber Top

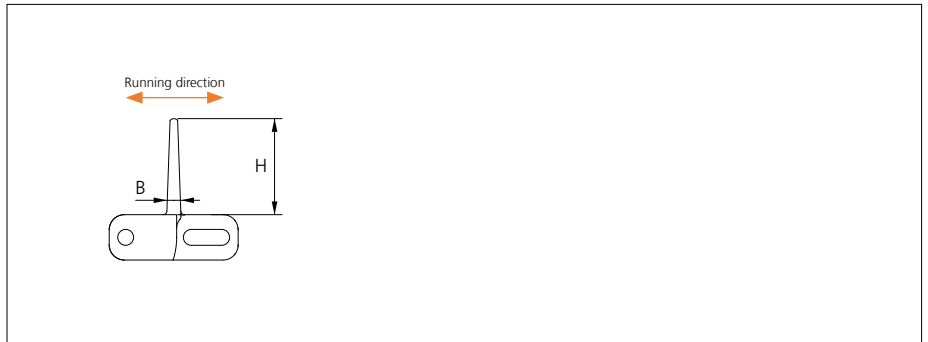
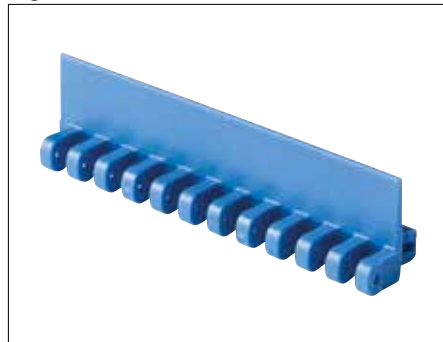


Type	Recommended belt materials and colors	Recommended pin materials and colors	V	
			mm	in
43% Open Rubber Top Radius 2.2	PP B + 03 K	PA6.6 B	3.0	0.12

Min. indent for Rubber Top inside and outside in the belt is 44.0 mm (1.73 in).

Accessories

Flight



Type	Flight Material & color	B		H		Link size	Width	
		mm	in	mm	in		mm	in
Flat	POM-D B W	3.7	0.15	25.4	1.00	K600	151.0	5.94

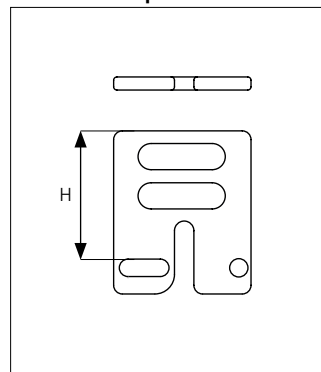
Non Standard material and color: See uni Material and Color Overview.

Accessories

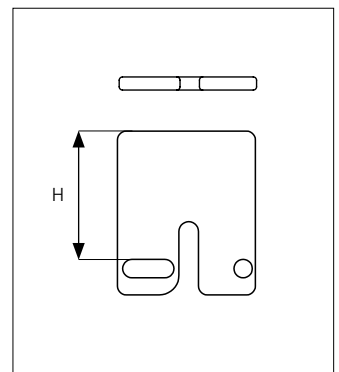
Side Guard



Side Guard Open



Side Guard



Type	Recommended Material & color	H	
		mm	in
Side Guard Side Guard Open	POM-D B	25.4	1.00

Min. indent for Side Guard is: 44.0 mm (1.73 in) and Increment 12.7 mm (0.50 in).

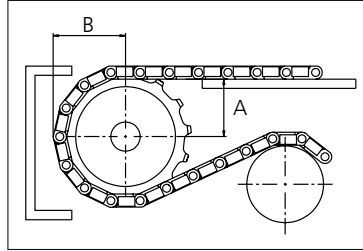
Non Standard material and color: See uni Material and Color Overview.

Sprocket

No. of teeth	Bore size														Overall diameter		Pitch diameter		Hub diameter		Dimension A		Dimension B		Single row/Two way	Double row/Two way	Molded PA6 LG	Machined PA6 N	
	Pilot Bore	mm	in	0.75	0.79	0.98	1.00	1.18	1.25	1.50	1.57	2.36	2.50	3.54															
															mm	in	mm	in	mm	in	mm	in							
Z07	x			●	●	●	●									58.0	2.28	58.5	2.30	40.8	1.61	20.4	0.80	35.2	1.39		x		x
Z09	x				●	●	●	●								75.0	2.95	74.3	2.93	57.8	2.28	28.9	1.14	43.1	1.70		x		x
Z12	x				●	●	●	●	■							100.0	3.94	98.1	3.86	82.8	3.26	41.4	1.63	55.1	2.17		x		x
Z15	x					●	●	●	■	●	■	■				124.6	4.91	122.2	4.81	107.4	4.23	53.8	2.12	67.1	2.64		x		x
Z18	x						●	●	■	●	■	■	■			149.3	5.88	146.3	5.76	132.1	5.20	66.0	2.60	79.2	3.12		x		x

■ Machined sprocket

● Machined sprocket



Non standard material and color: See uni Material and Color Overview.

Other sprocket sizes are available upon request

Two-part sprocket are available upon request

Other bore sizes are available upon request

uni Retainer Rings: See uni Retainer Ring data sheet

Width of tooth = 7.0 mm (0.28 in)

Width of sprocket = 30.0 mm (1.18 in)

Max. load per sprocket shown does not take bore size into account.

Please also ensure that sufficient size shaft is chosen for corresponding load.

For correct sprocket position: See uni Assembly Instructions for uni Flex ASB.

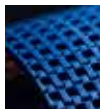
For more detailed sprocket information, contact Customer Service.



Conveyor Belts



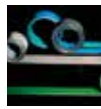
Seamless Belts



Modular Belts



Timing Belts



Transmission Belts



Fabrication & service

Expert advice, quality solutions
and local service
for all your belting needs
www.ammeraalbeltech.com

Ammeraal Beltech Modular A/S
Hjulmagervej 21
DK-7100 Vejle

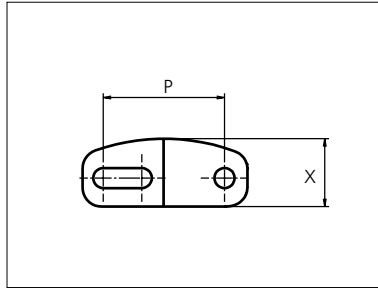
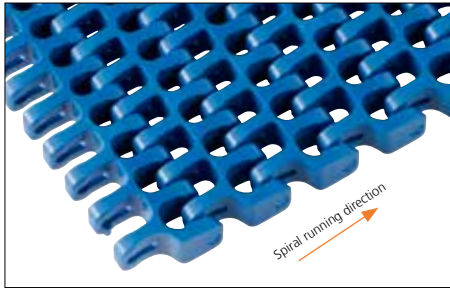
T +45 7572 3100
F +45 7572 3348
admin@unichains.com
www.unichains.com

This information is subject to alteration due to continuous development. Ammeraal Beltech will not be held liable for the incorrect use of the above stated information. This information replaces previous information. All activities performed and services rendered by Ammeraal Beltech are subject to general terms and conditions of sale and delivery, as applied by its operating companies.



Plastic Modular Belt

Series **uni Flex ASB** Type **CS 43% Open Radius 2.5/3.0/3.5/4.0**



Sideflexing belt
 Nominal pitch: 25.4 mm (1.00 in)
 Surface type: Curved Surface
 Surface opening: 43%
 Backflex radius: 25.0 mm (0.98 in)
 Pin diameter: 4.0 mm (0.16 in)
 Min. inside radius: 2.5 / 3.0 / 3.5 / 4.0 x belt width
 Curved surface makes perfect circle when Z9 tooth sprocket or 95 mm (3.74 in) flex diameter is applied.

Recommended Belt material & color	POM-D B	mm	in
Recommended Pin material & color	PA6.6 B	P (Nominal)	25.4 / 1.00
		X	14.2 / 0.56

Other non standard material and color: See uni Material and Color Overview.

Alternative pin and lock: Snap Pin A2

Belt width		Permissible tensile force (Belt/pin material)								Belt weight (Belt/pin material)				*Min. No. drive sprocket per shaft	Number of wear strips (Min. No.)	
		POM-D/PA6.6				PP/PA6.6				POM-D/PA6.6		PP/PA6.6			**Carry (pcs)	**Return (pcs)
		Straight sections		Curve sections		Straight sections		Curve sections		kg/m	lb/ft	kg/m	lb/ft			
mm	in	N	lbf	N	lbf	N	lbf	N	lbf	kg/m	lb/ft	kg/m	lb/ft			
149	5.9	2801	630	1200	270	1863	419	720	162	1.2	0.82	0.8	0.52	2	2	2
226	8.9	4249	955	1200	270	2825	635	720	162	1.9	1.25	1.2	0.79	2	2	2
302	11.9	5678	1276	1200	270	3775	849	720	162	2.5	1.66	1.6	1.06	3	3	2
379	14.9	7125	1602	1200	270	4738	1065	720	162	3.1	2.09	2.0	1.32	3	3	2
455	17.9	8554	1923	1200	270	5688	1279	720	162	3.7	2.51	2.4	1.59	5	4	2
531	20.9	9983	2244	1600	360	6638	1492	960	216	4.4	2.93	2.8	1.86	5	4	2
608	23.9	11430	2570	1600	360	7600	1708	960	216	5.0	3.35	3.2	2.12	5	5	3
531	20.9	9983	2244	2040	459	6638	1492	1224	275	4.4	2.93	2.8	1.86	5	4	2
608	23.9	11430	2570	2040	459	7600	1708	1224	275	5.0	3.35	3.2	2.12	5	5	3
684	26.9	12859	2891	2040	459	8550	1922	1224	275	5.6	3.77	3.6	2.39	5	5	3
761	30.0	14307	3216	2040	459	9513	2138	1224	275	6.2	4.19	4.0	2.66	7	6	3
837	33.0	15736	3537	2040	459	10463	2352	1224	275	6.9	4.61	4.4	2.93	7	6	3

Additional standard belt widths are available in steps of 76.4 mm (3.01 in). Additional non-standard belt widths are available in steps of 12.7 mm (0.50 in).

1449	57.0	27241	6124	2040	459	18113	4072	1224	275	11.9	7.99	7.5	5.06	11	10	5
------	------	-------	------	------	-----	-------	------	------	-----	------	------	-----	------	----	----	---

Additional standard belt widths are available in steps of 76.4 mm (3.01 in). Additional non-standard belt widths are available in steps of 12.7 mm (0.50 in).

1984	78.1	37299	8385	2040	459	24800	5575	1224	275	16.3	10.93	10.3	6.93	15	14	7
------	------	-------	------	------	-----	-------	------	------	-----	------	-------	------	------	----	----	---

General belt tolerance is +0/-0.4% at 23°C/73°F. For exact belt width contact Customer Service. Non standard belt width on request.

*Max. Load per Drive Sprocket. Belt material: POM-D 2000 N (450 lbf), PP 1100 N (247 lbf).

**Max. Spacing between wear strips, Carry: 152 mm (6 in); Return: 304 mm (12 in).

Max. Belt width with Flex ASB R1.6: 1296 mm (51.0 in).

= Single Link



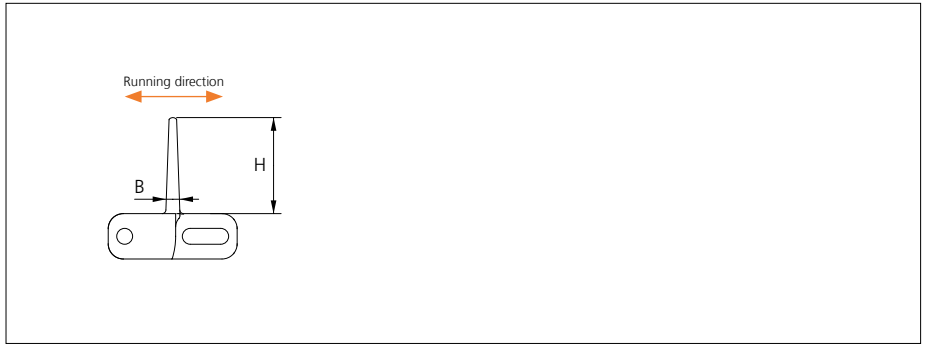
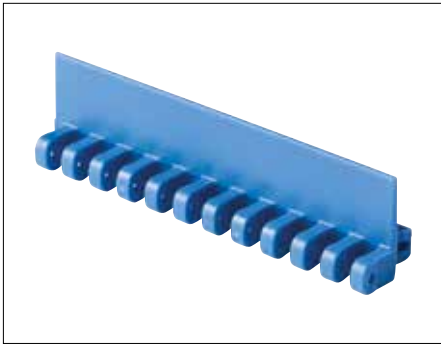
NON STANDARD

SIDE FLEXING

PITCH 25.4 MM/1.00 IN

Accessories

Flight



Type	Recommended Material & color	B		H		Link size	Width		I (min)	
		mm	in	mm	in		mm	in	mm	in
Flat	POM-D B	3.7	0.15	25.4	1.00	K600	151.0	5.94	38.1	1.50

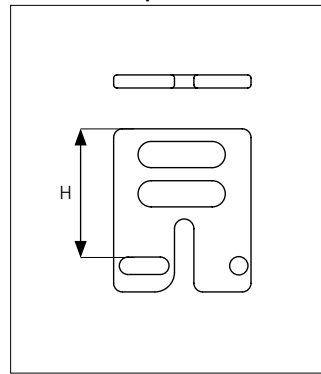
Non Standard material and color: See uni Material and Color Overview.

Accessories

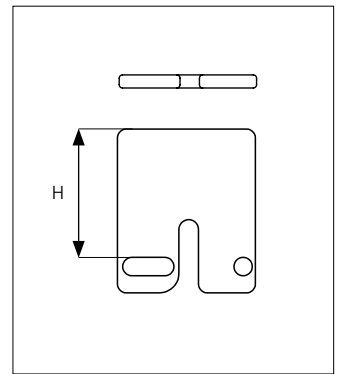
Side Guard



Side Guard Open



Side Guard



Type	Recommended Material & color	H	
		mm	in
Side Guard Side Guard Open	POM-D B	25.4	1.00

Min. indent for Side Guard is: 44.0 mm (1.73 in) and Increment 12.7 mm (0.50 in).

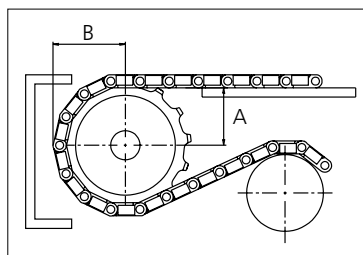
Non Standard material and color: See uni Material and Color Overview.

Sprocket

No. of teeth	Bore size														Overall diameter		Pitch diameter		Hub diameter		Dimension A		Dimension B		Single row/Two way	Double row/Two way	Machined	
	Pilot Bore																										Molded	PA6
	mm	in	0.75	0.79	0.98	1.00	1.18	1.25	1.50	1.57	2.36	2.50	3.54	mm	in	mm	in	mm	in	mm	in	mm	in	mm			in	
Z07	x			●	●	●	●								58.0	2.28	58.5	2.30	40.8	1.61	20.4	0.80	35.2	1.39		x		x
Z09	x			●	●	●	●	●							75.0	2.95	74.3	2.93	57.8	2.28	28.9	1.14	43.1	1.70		x		x
Z12	x			●	●	●	●	●	■						100.0	3.94	98.1	3.86	82.8	3.26	41.4	1.63	55.1	2.17		x		x
Z15	x				●	●	●	●	■	●	■				124.6	4.91	122.2	4.81	107.4	4.23	53.8	2.12	67.1	2.64		x		x
Z18	x					●	●	●	■	●	■	■			149.3	5.88	146.3	5.76	132.1	5.20	66.0	2.60	79.2	3.12		x		x

■ Machined sprocket

● Machined sprocket



Non standard material and color: See uni Material and Color Overview.

Other sprocket sizes are available upon request

Two-part sprocket are available upon request

Other bore sizes are available upon request

uni Retainer Rings: See uni Retainer Ring data sheet

Width of tooth = 7.0 mm (0.28 in)

Width of sprocket = 30.0 mm (1.18 in)

Max. load per sprocket shown does not take bore size into account.

Please also ensure that sufficient size shaft is chosen for corresponding load.

For correct sprocket position: See uni Assembly Instructions for uni Flex ASB.

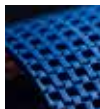
For more detailed sprocket information, contact Customer Service.



Conveyor Belts



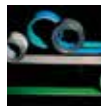
Seamless Belts



Modular Belts



Timing Belts



Transmission Belts



Fabrication & service

Expert advice, quality solutions and local service for all your belting needs
www.ammeraalbeltech.com

Ammeraal Beltech Modular A/S
Hjulmagervej 21
DK-7100 Vejle

T +45 7572 3100
F +45 7572 3348
admin@unichains.com
www.unichains.com

This information is subject to alteration due to continuous development. Ammeraal Beltech will not be held liable for the incorrect use of the above stated information. This information replaces previous information. All activities performed and services rendered by Ammeraal Beltech are subject to general terms and conditions of sale and delivery, as applied by its operating companies.

Local Contacts

Austria

T +43 171728 133
info-de@ammeraalbeltech.com
www.ammeraalbeltech.at

Belgium

T +32 2 466 03 00
info-be@ammeraalbeltech.com
www.ammeraalbeltech.be

Canada

T +1 905 890 1311
info-ca@ammeraalbeltech.com
www.ammeraalbeltech.com

Chile

T +56 2 233 12900
info-cl@ammeraalbeltech.com
www.ammeraalbeltech.cl

China

T +86 512 8287 2709
info-cn@ammeraalbeltech.com
www.ammeraalbeltech.com.cn

Czech Republic

T +420 567 117 211
info-cz@ammeraalbeltech.com
www.ammeraalbeltech.cz

Denmark

T + 45 7572 3100
info-dk@ammeraalbeltech.com
www.unichains.com

Finland

T +358 207 911 400
info-fi@ammeraalbeltech.com
www.ammeraalbeltech.fi

France

T +33 3 20 90 36 00
info-fr@ammeraalbeltech.com
www.ammeraalbeltech.fr

Germany

T +49 4152 937-0
info-de@ammeraalbeltech.com
www.ammeraalbeltech.de

Hungary

T +36 30 311 6099
info-hu@ammeraalbeltech.com
www.ammeraalbeltech.hu

India

T +91 44 265 34 244
info-in@ammeraalbeltech.com
www.ammeraalbeltech.com

Italy

T +39 051 660 60 06
info-it@ammeraalbeltech.com
www.ammeraalbeltech.it

Luxembourg

T +352 26 48 38 56
info-lu@ammeraalbeltech.com
www.ammeraal-beltech.lu

Malaysia

T +60 3 806 188 49
info-my@ammeraalbeltech.com
www.ammeraalbeltech.com

Netherlands

T +31 72 57 51212
info-nl@ammeraalbeltech.com
www.ammeraalbeltech.nl

Poland

T +48 32 44 77 179
info-pl@ammeraalbeltech.com
www.ammeraalbeltech.com

Portugal

T +351 22 947 94 40
info-pt@ammeraalbeltech.com
www.ammeraalbeltech.pt

Singapore

T +65 62739767
info-sg@ammeraalbeltech.com
www.ammeraalbeltech.com

Slovakia

T +421 2 55648541-2
info-sk@ammeraalbeltech.com
www.ammeraalbeltech.sk

South Korea

T +82 31 448 3613-7
info-kr@ammeraalbeltech.com
www.ammeraalbeltech.co.kr

Spain

T +34 93 718 3054
info-es@ammeraalbeltech.com
www.ammeraalbeltech.es

Sweden

T +46 44 780 3010
info-se@ammeraalbeltech.com
www.ammeraalbeltech.se

Switzerland

T +41 55 2253 535
info-ch@ammeraalbeltech.com
www.ammeraalbeltech.ch

Thailand

T +66 2 902 2604-13
info-th@ammeraalbeltech.com
www.ammeraalbeltech.com

United Kingdom

T +44 1992 500550
info-uk@ammeraalbeltech.com
www.ammeraalbeltech.co.uk

United States

T +1 847 673 6720
info-us@ammeraalbeltech.com
www.ammeraalbeltech.com

Vietnam

T +84 8 376 562 05
info-vn@ammeraalbeltech.com
www.ammeraalbeltech.com.vn

Global Headquarters:

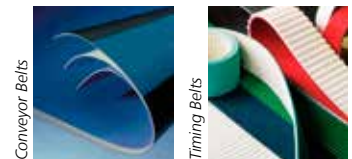
Ammeraal Beltech Holding B.V.

P.O. Box 38
1700 AA Heerhugowaard
The Netherlands

T +31 (0)72 575 1212
F +31 (0)72 571 6455

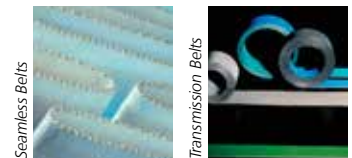
info@ammeraalbeltech.com
www.ammeraalbeltech.com

Expert advice, quality solutions
and local service
for all your belting needs



Conveyor Belts

Timing Belts



Seamless Belts

Transmission Belts



Modular Belts

Fabrication & service

... and 150 more service contact points on www.ammeraalbeltech.com