

# Ammeraal Beltech Modular

Innovative belt and chain solutions  
for every industry & application



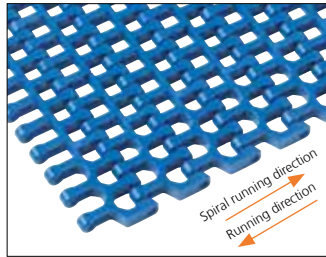
# Content

uni Flex L-ASB Tab R2.2	page 3 - 6
uni Flex L-ASB R1.6	page 7 - 10
uni Flex-L-ASB R2.2	page 11 - 14
uni Flex L-ASB Rubber Top R2.2	page 15 - 18
uni Flex-L-ASB R2.5/3.0/3.5/4.0	page 19 - 22

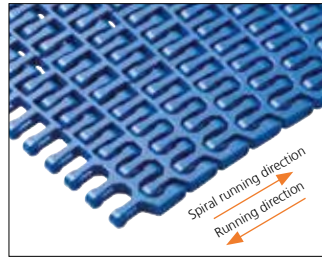


# Plastic Modular Belt

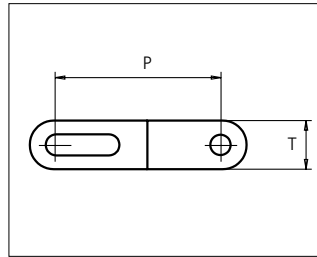
## Series uni Flex L-ASB



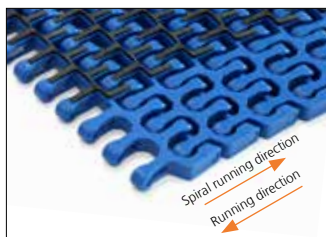
50% Open Radius 1.6



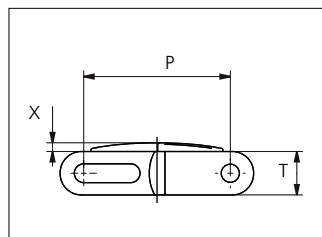
47% Open Radius 2.2



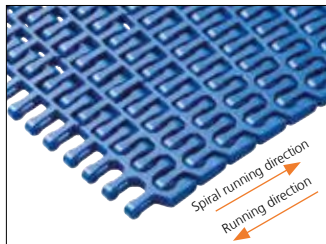
Sideflexing belt  
 Nominal pitch: 50.8 mm (2.00 in)  
 Surface type: Flat  
 Surface opening: 47%/50%  
 Backflex radius: 100.0 mm (3.94 in)  
 Pin diameter: 6 mm (0.24 in)  
 Min. inside radius: R1.6 x belt width, R2.2 x belt width



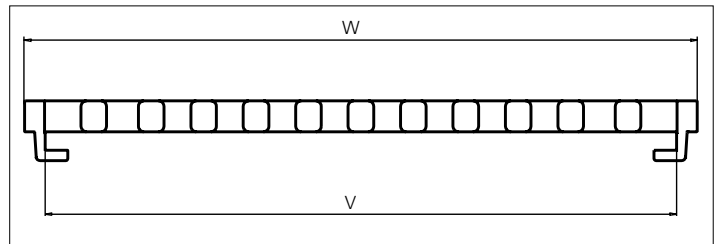
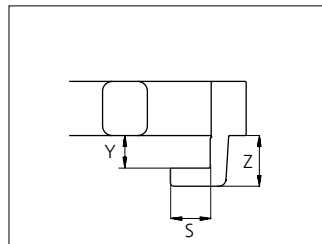
47/50% Open Rubber Top Radius 2.2



uni Flex L-ASB Rubber Top Radius 2.2: Indent min. 71.0 mm (2.80 in) and Increment 25.4 mm (1.00)  
 uni Flex L-ASB Rubber Top R1.6: Indent min. 97.0 mm (3.82 in) and Increment 25.4 mm (1.00 in).



47% Open Tab Radius 2.2



Type	Belt materials and colors	Pin materials and colors
47% Open Radius 2.2 47% Open Tab Radius 2.2 50% Open Radius 1.6	POM-D <b>B</b> <b>W</b> PP <b>B</b> <b>W</b>	PA6.6 <b>B</b>
47% Open Rubber Top Radius 2.2 47% Open Rubber Top Tab Radius 2.2 50% Open Rubber Top Radius 1.6	PP <b>B</b> + 03 <b>K</b>	

	mm	in		mm	in
<b>P (Nominal)</b>	50.8	2.00	<b>W</b>	325.9	12.83
<b>S</b>	11.0	0.43	<b>X</b>	3.0	0.12
<b>T</b>	15.0	0.59	<b>Y</b>	9.0	0.35
<b>V</b>	306.5	12.07	<b>Z</b>	14.0	0.55

Non standard material and color: See uni Material and Color Overview.

Alternative pin and lock materials:

⚡ Snap Pin A1: PP **W** PBT **LG** PA6.6 **B**

⚡ Lockpin: PBT **LG**



STANDARD

SIDE FLEXING

PITCH 50.8 MM/2.00 IN

### uni Flex L-ASB 50% Open Radius 1.6


Belt width		Permissible tensile force (Belt/pin material)								Belt weight (Belt/pin material)				*Min. No. drive sprocket per shaft	Number of wear strips (Min. No.)	
		POM-D/PA6.6				PP/PA6.6				POM-D/PA6.6		PP/PA6.6			**Carry (pcs)	**Return (pcs)
		Straight sections		Curve sections		Straight sections		Curve sections		kg/m	lb/ft	kg/m	lb/ft			
mm	in	N	lbf	N	lbf	N	lbf	N	lbf	kg/m	lb/ft	kg/m	lb/ft			
250	9.8	10000	2248	2440	549	5000	1124	1440	324	2.5	1.65	1.5	1.01	2	2	2
326	12.8	13040	2931	2440	549	6520	1466	1440	324	3.2	2.15	2.0	1.31	3	3	2
403	15.9	16120	3624	3110	699	8060	1812	1960	441	3.9	2.65	2.4	1.63	3	3	2
479	18.9	19160	4307	3110	699	9580	2154	1960	441	4.7	3.15	2.9	1.93	5	4	2
555	21.9	22200	4991	3110	699	11100	2495	1960	441	5.4	3.66	3.3	2.24	5	4	2
631	24.8	25240	5674	3110	699	12620	2837	1960	441	6.2	4.16	3.8	2.54	5	5	3
708	27.9	28320	6366	3110	699	14160	3183	1960	441	6.9	4.66	4.2	2.85	5	5	3
784	30.9	31360	7050	3110	699	15680	3525	1960	441	7.7	5.16	4.7	3.16	7	6	3
860	33.9	34400	7733	3110	699	17200	3867	1960	441	8.4	5.66	5.2	3.47	7	6	3
936	36.9	37440	8417	3110	699	18720	4208	1960	441	9.2	6.16	5.6	3.77	7	7	4
1013	39.9	40520	9109	3110	699	20260	4554	1960	441	9.9	6.67	6.1	4.08	7	7	4

Additional non-standard belt widths are available in steps of 25.4 mm (1.00 in).

General belt tolerance is +0/-0.4% at 23°C/73°F. For exact belt width contact Customer Service. Non standard belt width on request.

\*Max. Load per Drive Sprocket. Belt material: POM-D 2500 N (562 lbf), PP 1200 N (270 lbf).

\*\*Max. Spacing between wear strips, Carry: 152 mm (6 in); Return: 304 mm (12 in).

 = Single Link

### uni Flex L-ASB 47% Open Radius 2.2

Belt width		Permissible tensile force (Belt/pin material)								Belt weight (Belt/pin material)				*Min. No. drive sprocket per shaft	Number of wear strips (Min. No.)	
		POM-D/PA6.6				PP/PA6.6				POM-D/PA6.6		PP/PA6.6			**Carry (pcs)	**Return (pcs)
		Straight sections		Curve sections		Straight sections		Curve sections		kg/m	lb/ft	kg/m	lb/ft			
mm	in	N	lbf	N	lbf	N	lbf	N	lbf	kg/m	lb/ft	kg/m	lb/ft			
250	9.8	10000	2248	2440	549	5000	1124	1440	324	2.5	1.65	1.5	1.01	2	2	2
326	12.8	13040	2931	2440	549	6520	1466	1440	324	3.2	2.15	2.0	1.31	3	3	2
403	15.9	16120	3624	3110	699	8060	1812	1960	441	3.9	2.65	2.4	1.63	3	3	2
479	18.9	19160	4307	3110	699	9580	2154	1960	441	4.7	3.15	2.9	1.93	5	4	2
555	21.9	22200	4991	3110	699	11100	2495	1960	441	5.4	3.66	3.3	2.24	5	4	2
631	24.8	25240	5674	3110	699	12620	2837	1960	441	6.2	4.16	3.8	2.54	5	5	3
708	27.9	28320	6366	3110	699	14160	3183	1960	441	6.9	4.66	4.2	2.85	5	5	3
784	30.9	31360	7050	3110	699	15680	3525	1960	441	7.7	5.16	4.7	3.16	7	6	3
860	33.9	34400	7733	3110	699	17200	3867	1960	441	8.4	5.66	5.2	3.47	7	6	3
936	36.9	37440	8417	3110	699	18720	4208	1960	441	9.2	6.16	5.6	3.77	7	7	4
1013	39.9	40520	9109	3110	699	20260	4554	1960	441	9.9	6.67	6.1	4.08	7	7	4
1089	42.9	43560	9792	3110	699	21780	4896	1960	441	10.7	7.17	6.5	4.39	9	8	4

Additional standard belt widths are available in steps of 76.2 mm (3.00 in) Additional non-standard belt widths are available in steps of 25.4 mm (1.00 in)

1699	66.9	67960	15277	3110	699	33980	7639	1960	441	16.7	11.19	10.2	6.85	13	12	6
------	------	-------	-------	------	-----	-------	------	------	-----	------	-------	------	------	----	----	---


Additional standard belt widths are available in steps of 76.2 mm (3.00 in) Additional non-standard belt widths are available in steps of 25.4 mm (1.00 in)

1927	75.9	77080	17328	3110	699	38540	8664	1960	441	18.9	12.69	11.6	7.77	13	13	7
------	------	-------	-------	------	-----	-------	------	------	-----	------	-------	------	------	----	----	---

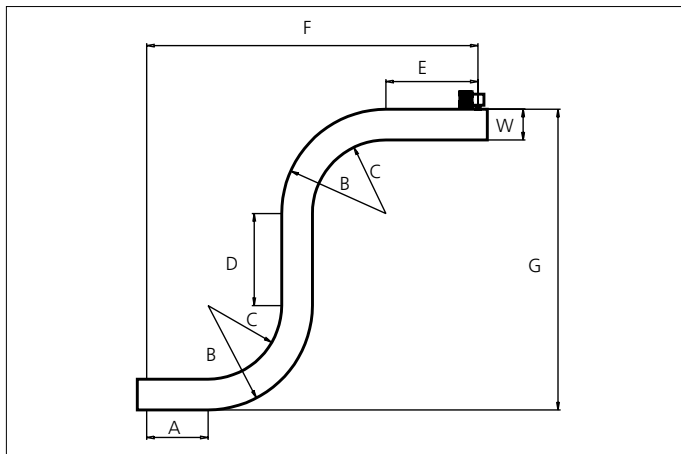
General belt tolerance is +0/-0.4% at 23°C/73°F. For exact belt width contact Customer Service. Non standard belt width on request.

\*Max. Load per Drive Sprocket. Belt material: POM-D 2500 N (562 lbf), PP 1200 N (270 lbf).

\*\*Max. Spacing between wear strips, Carry: 152 mm (6 in); Return: 304 mm (12 in).

 = Single Link

### Design Guidelines



	47% Open Radius 2.2 47% Open Radius 2.2	50% Open Radius 1.6 (inside)
<b>A</b>	min. 1.5 x W	min. 1.5 x W
<b>B</b>	min. 3.2 x W	min. 2.6 x W
<b>C</b>	min. 2.2 x W	min. 1.6 x W
<b>D</b>	min. 2.0 x W	min. 2.0 x W
<b>E</b>	min. 2.0 x W	min. 2.0 x W
<b>F</b>	min. 8.9 x W	min. 7.7 x W
<b>G</b>	min. 8.4 x W	min. 7.2 x W

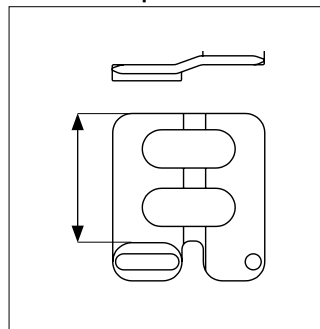
uni Flex L-ASB R1.6 can not be used in S-conveyors.

### Accessories

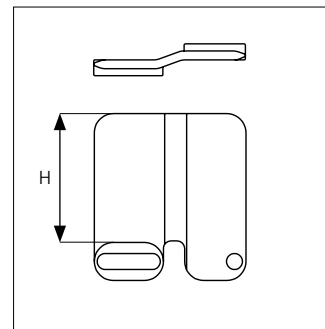
#### Side Guard



#### Side Guard Open



#### Side Guard

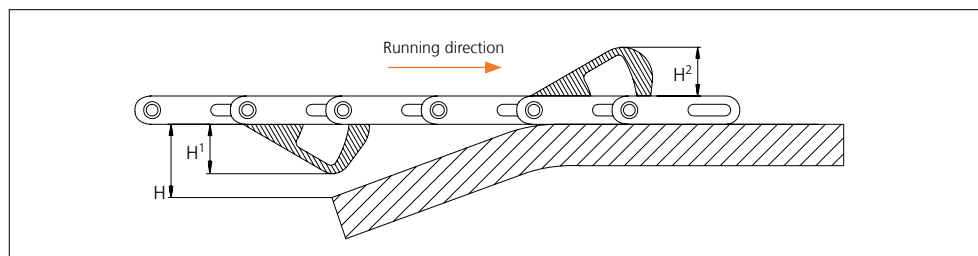
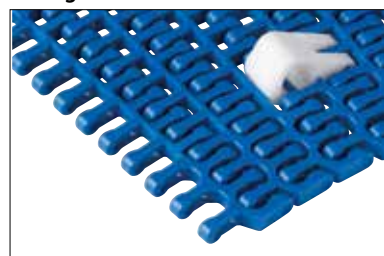


Type	Side Guard Material & color	H	
		mm	in
Side Guard	POM-D <b>B</b> <b>W</b>	10.0	0.39
		25.4	1.00
		50.0	1.97
Side Guard Open		50.0	1.97

\* Min. indent for Side Guard is: 80.0 mm (3.15 in) and Increment 25.4 mm (1.00 in)  
Non Standard material and color: See uni Material and Color Overview.

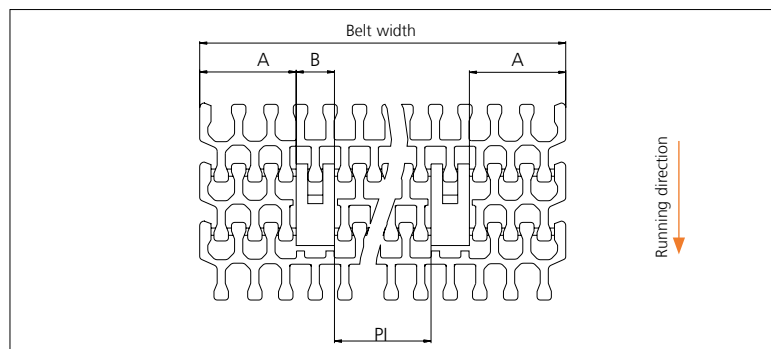
### Accessories

#### AmFlight



Type	Material & color	H	H <sup>1</sup>		H <sup>2</sup>	
			mm	in	mm	in
AmFlight	PE <b>W</b>	H > H <sup>1</sup>	25.4	1.00	26.0	1.02

Other Non Standard option: See uni AmFlight Overview.



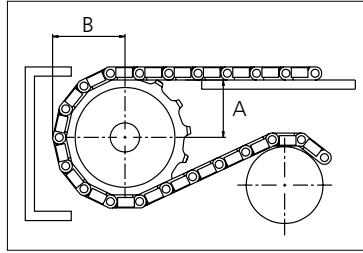
	mm	in
<b>A min</b>	83.0	3.27
<b>B</b>	33.0	1.30
<b>PI min</b>	68.5	2.70

Increment: 25.4 mm (1.00 in)

## Sprocket

No. of teeth	Bore size													Overall diameter		Pitch diameter		Hub diameter		Dimension A		Dimension B		Single row/Two way	Double row/Two way	Molded PA6 LG	Machined PA6 N
	Pilot Bore	in	0.75	0.79	0.98	1.00	1.18	1.25	1.50	1.57	2.36	2.50	3.54														
	mm	19.1	20.0	25.0	25.4	30.0	31.8	38.1	40.0	60.0	63.5	90.0	mm	in	mm	in	mm	in	mm	in							
Z08	x				●	●			●				134.6	5.30	131.5	5.18	107.6	4.23	54.4	2.15	74.9	2.95	x			x	
Z10	x				●	●	●		●				168.3	6.63	164.0	6.46	141.3	5.56	71.4	2.81	90.8	3.57	x			x	
Z12	x				●		●	●	●	●		■	203.5	8.01	196.5	7.74	176.5	6.94	88.2	3.47	106.8	4.20	x			x	
Z15	x				●		●	●	●	●		■	253.4	9.98	245.4	9.66	226.4	8.91	113.2	4.46	131.0	5.16	x			x	

■ Machined sprocket ● Machined sprocket



Non standard material and color: See uni Material and Color Overview.

Other sprocket sizes are available upon request

Two-part sprocket are available upon request

Other bore sizes are available upon request

uni Retainer Rings: See uni Retainer Ring data sheet

Width of tooth = 15.0 mm (0.59 in)

Width of sprocket = 30.0 mm (1.18 in)

Max. load per sprocket shown does not take bore size into account.

Please also ensure that sufficient size shaft is chosen for corresponding load.

For correct sprocket position: See uni Assembly Instructions for uni Flex L-ASB.

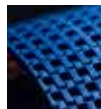
For more detailed sprocket information, contact Customer Service.



Conveyor Belts



Seamless Belts



Modular Belts



Timing Belts



Transmission Belts



Fabrication & service

Expert advice, quality solutions and local service for all your belting needs  
[www.ammeraalbeltech.com](http://www.ammeraalbeltech.com)

**Ammeraal Beltech Modular A/S**  
 Hjulmagervej 21  
 DK-7100 Vejle

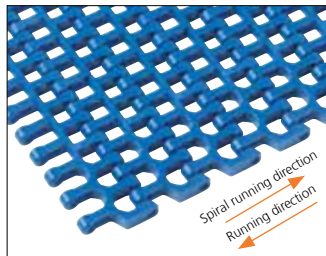
T +45 7572 3100  
 F +45 7572 3348  
 admin@unichains.com  
 www.unichains.com

This information is subject to alteration due to continuous development. Ammeraal Beltech will not be held liable for the incorrect use of the above stated information. This information replaces previous information. All activities performed and services rendered by Ammeraal Beltech are subject to general terms and conditions of sale and delivery, as applied by its operating companies.

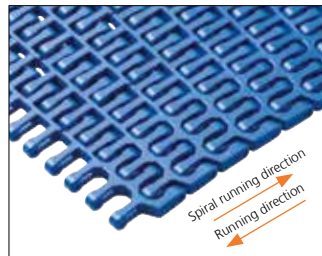


# Plastic Modular Belt

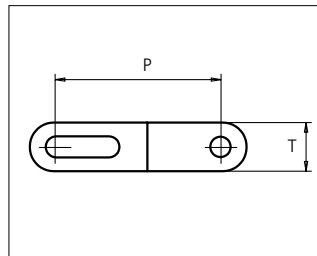
## Series uni Flex L-ASB



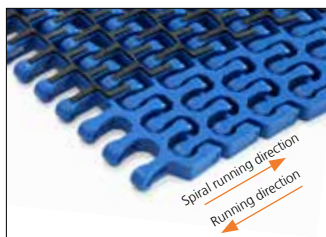
50% Open Radius 1.6



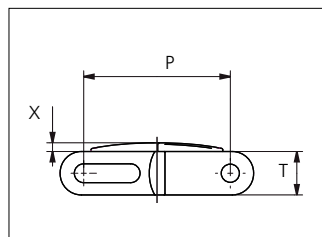
47% Open Radius 2.2



Sideflexing belt  
 Nominal pitch: 50.8 mm (2.00 in)  
 Surface type: Flat  
 Surface opening: 47%/50%  
 Backflex radius: 100.0 mm (3.94 in)  
 Pin diameter: 6 mm (0.24 in)  
 Min. inside radius: R1.6 x belt width, R2.2 x belt width



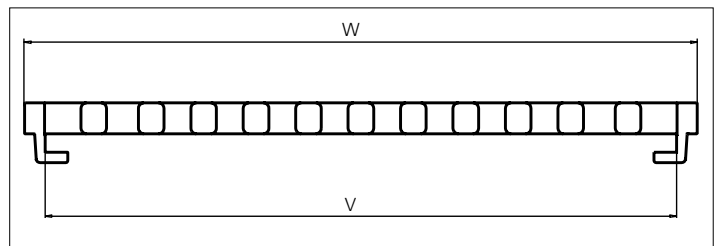
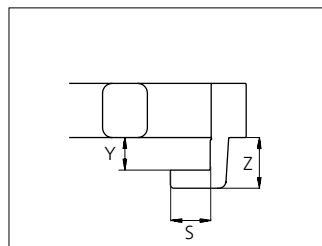
47/50% Open Rubber Top Radius 2.2



uni Flex L-ASB Rubber Top Radius 2.2: Indent min. 71.0 mm (2.80 in) and Increment 25.4 mm (1.00)  
 uni Flex L-ASB Rubber Top R1.6: Indent min. 97.0 mm (3.82 in) and Increment 25.4 mm (1.00 in).



47% Open Tab Radius 2.2



Type	Belt materials and colors	Pin materials and colors
47% Open Radius 2.2 47% Open Tab Radius 2.2 50% Open Radius 1.6	POM-D <b>B</b> <b>W</b> PP <b>B</b> <b>W</b>	PA6.6 <b>B</b>
47% Open Rubber Top Radius 2.2 47% Open Rubber Top Tab Radius 2.2 50% Open Rubber Top Radius 1.6	PP <b>B</b> + 03 <b>K</b>	

	mm	in		mm	in
<b>P (Nominal)</b>	50.8	2.00	<b>W</b>	325.9	12.83
<b>S</b>	11.0	0.43	<b>X</b>	3.0	0.12
<b>T</b>	15.0	0.59	<b>Y</b>	9.0	0.35
<b>V</b>	306.5	12.07	<b>Z</b>	14.0	0.55

Non standard material and color: See uni Material and Color Overview.

Alternative pin and lock materials:

⚡ Snap Pin A1: PP **W** PBT **LG** PA6.6 **B**

⚡ Lockpin: PBT **LG**



STANDARD

SIDE FLEXING

PITCH 50.8 MM/2.00 IN

### uni Flex L-ASB 50% Open Radius 1.6


Belt width		Permissible tensile force (Belt/pin material)								Belt weight (Belt/pin material)				*Min. No. drive sprocket per shaft	Number of wear strips (Min. No.)	
		POM-D/PA6.6				PP/PA6.6				POM-D/PA6.6		PP/PA6.6			**Carry (pcs)	**Return (pcs)
		Straight sections		Curve sections		Straight sections		Curve sections		kg/m	lb/ft	kg/m	lb/ft			
mm	in	N	lbf	N	lbf	N	lbf	N	lbf	kg/m	lb/ft	kg/m	lb/ft			
250	9.8	10000	2248	2440	549	5000	1124	1440	324	2.5	1.65	1.5	1.01	2	2	2
326	12.8	13040	2931	2440	549	6520	1466	1440	324	3.2	2.15	2.0	1.31	3	3	2
403	15.9	16120	3624	3110	699	8060	1812	1960	441	3.9	2.65	2.4	1.63	3	3	2
479	18.9	19160	4307	3110	699	9580	2154	1960	441	4.7	3.15	2.9	1.93	5	4	2
555	21.9	22200	4991	3110	699	11100	2495	1960	441	5.4	3.66	3.3	2.24	5	4	2
631	24.8	25240	5674	3110	699	12620	2837	1960	441	6.2	4.16	3.8	2.54	5	5	3
708	27.9	28320	6366	3110	699	14160	3183	1960	441	6.9	4.66	4.2	2.85	5	5	3
784	30.9	31360	7050	3110	699	15680	3525	1960	441	7.7	5.16	4.7	3.16	7	6	3
860	33.9	34400	7733	3110	699	17200	3867	1960	441	8.4	5.66	5.2	3.47	7	6	3
936	36.9	37440	8417	3110	699	18720	4208	1960	441	9.2	6.16	5.6	3.77	7	7	4
1013	39.9	40520	9109	3110	699	20260	4554	1960	441	9.9	6.67	6.1	4.08	7	7	4

Additional non-standard belt widths are available in steps of 25.4 mm (1.00 in).

General belt tolerance is +0/-0.4% at 23°C/73°F. For exact belt width contact Customer Service. Non standard belt width on request.

\*Max. Load per Drive Sprocket. Belt material: POM-D 2500 N (562 lbf), PP 1200 N (270 lbf).

\*\*Max. Spacing between wear strips, Carry: 152 mm (6 in); Return: 304 mm (12 in).

 = Single Link

### uni Flex L-ASB 47% Open Radius 2.2

Belt width		Permissible tensile force (Belt/pin material)								Belt weight (Belt/pin material)				*Min. No. drive sprocket per shaft	Number of wear strips (Min. No.)	
		POM-D/PA6.6				PP/PA6.6				POM-D/PA6.6		PP/PA6.6			**Carry (pcs)	**Return (pcs)
		Straight sections		Curve sections		Straight sections		Curve sections		kg/m	lb/ft	kg/m	lb/ft			
mm	in	N	lbf	N	lbf	N	lbf	N	lbf	kg/m	lb/ft	kg/m	lb/ft			
250	9.8	10000	2248	2440	549	5000	1124	1440	324	2.5	1.65	1.5	1.01	2	2	2
326	12.8	13040	2931	2440	549	6520	1466	1440	324	3.2	2.15	2.0	1.31	3	3	2
403	15.9	16120	3624	3110	699	8060	1812	1960	441	3.9	2.65	2.4	1.63	3	3	2
479	18.9	19160	4307	3110	699	9580	2154	1960	441	4.7	3.15	2.9	1.93	5	4	2
555	21.9	22200	4991	3110	699	11100	2495	1960	441	5.4	3.66	3.3	2.24	5	4	2
631	24.8	25240	5674	3110	699	12620	2837	1960	441	6.2	4.16	3.8	2.54	5	5	3
708	27.9	28320	6366	3110	699	14160	3183	1960	441	6.9	4.66	4.2	2.85	5	5	3
784	30.9	31360	7050	3110	699	15680	3525	1960	441	7.7	5.16	4.7	3.16	7	6	3
860	33.9	34400	7733	3110	699	17200	3867	1960	441	8.4	5.66	5.2	3.47	7	6	3
936	36.9	37440	8417	3110	699	18720	4208	1960	441	9.2	6.16	5.6	3.77	7	7	4
1013	39.9	40520	9109	3110	699	20260	4554	1960	441	9.9	6.67	6.1	4.08	7	7	4
1089	42.9	43560	9792	3110	699	21780	4896	1960	441	10.7	7.17	6.5	4.39	9	8	4

Additional standard belt widths are available in steps of 76.2 mm (3.00 in) Additional non-standard belt widths are available in steps of 25.4 mm (1.00 in)

1699	66.9	67960	15277	3110	699	33980	7639	1960	441	16.7	11.19	10.2	6.85	13	12	6
------	------	-------	-------	------	-----	-------	------	------	-----	------	-------	------	------	----	----	---


Additional standard belt widths are available in steps of 76.2 mm (3.00 in) Additional non-standard belt widths are available in steps of 25.4 mm (1.00 in)

1927	75.9	77080	17328	3110	699	38540	8664	1960	441	18.9	12.69	11.6	7.77	13	13	7
------	------	-------	-------	------	-----	-------	------	------	-----	------	-------	------	------	----	----	---

General belt tolerance is +0/-0.4% at 23°C/73°F. For exact belt width contact Customer Service. Non standard belt width on request.

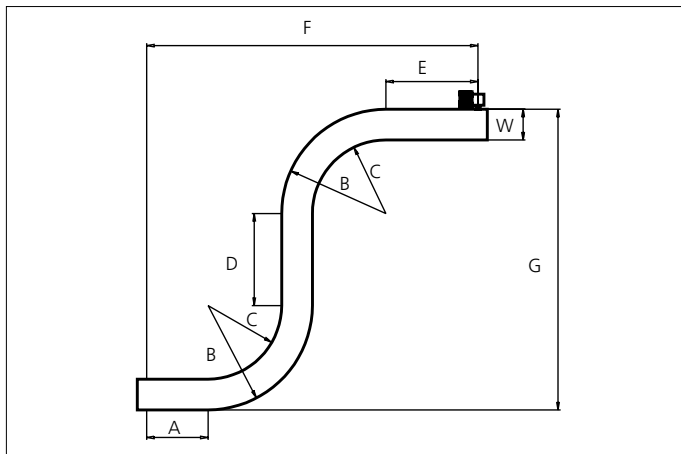
\*Max. Load per Drive Sprocket. Belt material: POM-D 2500 N (562 lbf), PP 1200 N (270 lbf).

\*\*Max. Spacing between wear strips, Carry: 152 mm (6 in); Return: 304 mm (12 in).

 = Single Link



### Design Guidelines



	47% Open Radius 2.2 47% Open Radius 2.2	50% Open Radius 1.6 (inside)
<b>A</b>	min. 1.5 x W	min. 1.5 x W
<b>B</b>	min. 3.2 x W	min. 2.6 x W
<b>C</b>	min. 2.2 x W	min. 1.6 x W
<b>D</b>	min. 2.0 x W	min. 2.0 x W
<b>E</b>	min. 2.0 x W	min. 2.0 x W
<b>F</b>	min. 8.9 x W	min. 7.7 x W
<b>G</b>	min. 8.4 x W	min. 7.2 x W

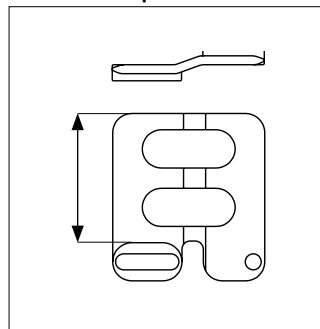
uni Flex L-ASB R1.6 can not be used in S-conveyors.

### Accessories

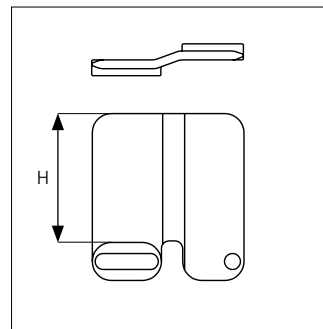
#### Side Guard



#### Side Guard Open



#### Side Guard

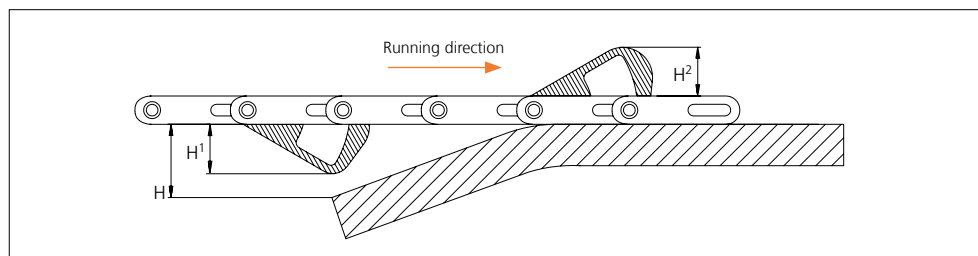
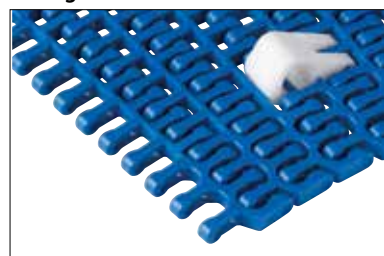


Type	Side Guard Material & color	H	
		mm	in
Side Guard	POM-D <b>B</b> <b>W</b>	10.0	0.39
		25.4	1.00
		50.0	1.97
Side Guard Open		50.0	1.97

\* Min. indent for Side Guard is: 80.0 mm (3.15 in) and Increment 25.4 mm (1.00 in)  
Non Standard material and color: See uni Material and Color Overview.

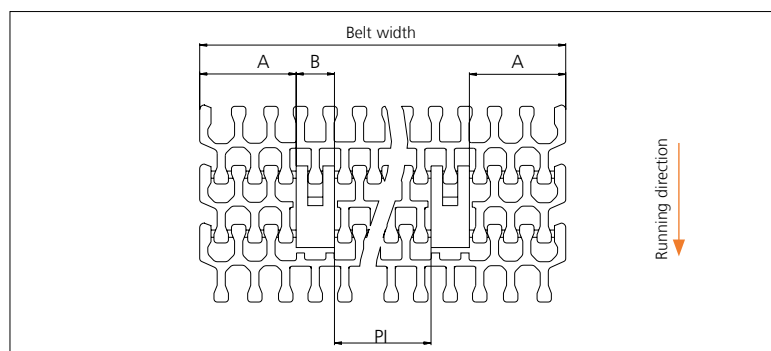
### Accessories

#### AmFlight



Type	Material & color	H	H <sup>1</sup>		H <sup>2</sup>	
			mm	in	mm	in
AmFlight	PE <b>W</b>	H > H <sup>1</sup>	25.4	1.00	26.0	1.02

Other Non Standard option: See uni AmFlight Overview.



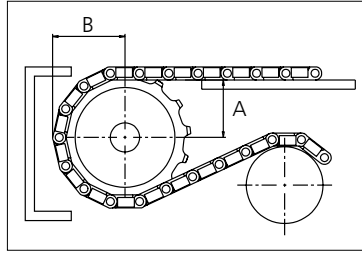
	mm	in
<b>A min</b>	83.0	3.27
<b>B</b>	33.0	1.30
<b>PI min</b>	68.5	2.70

Increment: 25.4 mm (1.00 in)

## Sprocket

No. of teeth	Bore size													Overall diameter		Pitch diameter		Hub diameter		Dimension A		Dimension B		Single row/Two way	Double row/Two way	Molded PA6 LG	Machined PA6 N
	Pilot Bore	in	0.75	0.79	0.98	1.00	1.18	1.25	1.50	1.57	2.36	2.50	3.54														
	mm	19.1	20.0	25.0	25.4	30.0	31.8	38.1	40.0	60.0	63.5	90.0	mm	in	mm	in	mm	in	mm	in							
Z08	x				●	●			●				134.6	5.30	131.5	5.18	107.6	4.23	54.4	2.15	74.9	2.95	x			x	
Z10	x				●	●	●		●				168.3	6.63	164.0	6.46	141.3	5.56	71.4	2.81	90.8	3.57	x			x	
Z12	x				●		●	●	●	●		■	203.5	8.01	196.5	7.74	176.5	6.94	88.2	3.47	106.8	4.20	x			x	
Z15	x				●		●	●	●	●		■	253.4	9.98	245.4	9.66	226.4	8.91	113.2	4.46	131.0	5.16	x			x	

■ Machined sprocket ● Machined sprocket



Non standard material and color: See uni Material and Color Overview.

Other sprocket sizes are available upon request

Two-part sprocket are available upon request

Other bore sizes are available upon request

uni Retainer Rings: See uni Retainer Ring data sheet

Width of tooth = 15.0 mm (0.59 in)

Width of sprocket = 30.0 mm (1.18 in)

Max. load per sprocket shown does not take bore size into account.

Please also ensure that sufficient size shaft is chosen for corresponding load.

For correct sprocket position: See uni Assembly Instructions for uni Flex L-ASB.

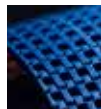
For more detailed sprocket information, contact Customer Service.



Conveyor Belts



Seamless Belts



Modular Belts



Timing Belts



Transmission Belts



Fabrication & service

Expert advice, quality solutions and local service for all your belting needs  
[www.ammeraalbeltech.com](http://www.ammeraalbeltech.com)

**Ammeraal Beltech Modular A/S**  
 Hjulmagervej 21  
 DK-7100 Vejle

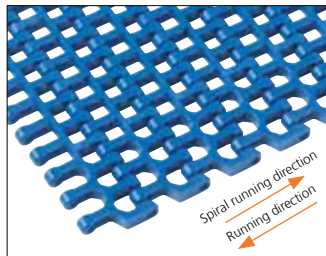
T +45 7572 3100  
 F +45 7572 3348  
 admin@unichains.com  
 www.unichains.com

This information is subject to alteration due to continuous development. Ammeraal Beltech will not be held liable for the incorrect use of the above stated information. This information replaces previous information. All activities performed and services rendered by Ammeraal Beltech are subject to general terms and conditions of sale and delivery, as applied by its operating companies.

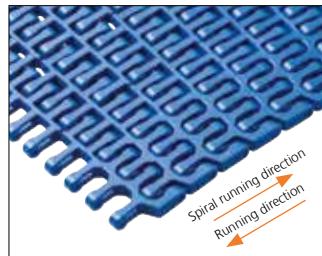


# Plastic Modular Belt

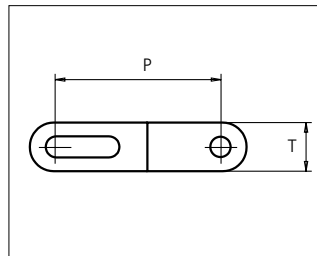
## Series uni Flex L-ASB



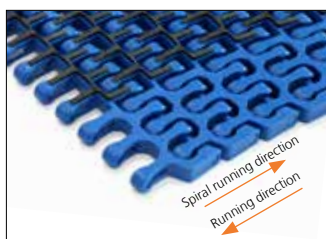
50% Open Radius 1.6



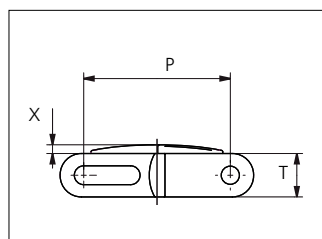
47% Open Radius 2.2



Sideflexing belt  
 Nominal pitch: 50.8 mm (2.00 in)  
 Surface type: Flat  
 Surface opening: 47%/50%  
 Backflex radius: 100.0 mm (3.94 in)  
 Pin diameter: 6 mm (0.24 in)  
 Min. inside radius: R1.6 x belt width, R2.2 x belt width



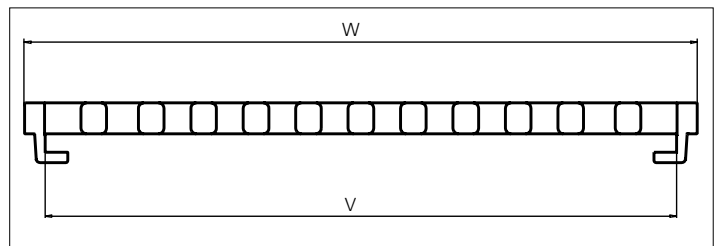
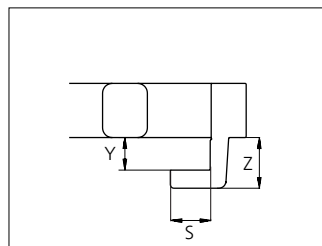
47/50% Open Rubber Top Radius 2.2



uni Flex L-ASB Rubber Top Radius 2.2: Indent min. 71.0 mm (2.80 in) and Increment 25.4 mm (1.00)  
 uni Flex L-ASB Rubber Top R1.6: Indent min. 97.0 mm (3.82 in) and Increment 25.4 mm (1.00 in).



47% Open Tab Radius 2.2



Type	Belt materials and colors	Pin materials and colors
47% Open Radius 2.2 47% Open Tab Radius 2.2 50% Open Radius 1.6	POM-D <b>B</b> <b>W</b> PP <b>B</b> <b>W</b>	PA6.6 <b>B</b>
47% Open Rubber Top Radius 2.2 47% Open Rubber Top Tab Radius 2.2 50% Open Rubber Top Radius 1.6	PP <b>B</b> + 03 <b>K</b>	

	mm	in		mm	in
<b>P (Nominal)</b>	50.8	2.00	<b>W</b>	325.9	12.83
<b>S</b>	11.0	0.43	<b>X</b>	3.0	0.12
<b>T</b>	15.0	0.59	<b>Y</b>	9.0	0.35
<b>V</b>	306.5	12.07	<b>Z</b>	14.0	0.55

Non standard material and color: See uni Material and Color Overview.

Alternative pin and lock materials:

⚡ Snap Pin A1: PP **W** PBT **LG** PA6.6 **B**

⚡ Lockpin: PBT **LG**



STANDARD

SIDE FLEXING

PITCH 50.8 MM/2.00 IN

### uni Flex L-ASB 50% Open Radius 1.6


Belt width		Permissible tensile force (Belt/pin material)								Belt weight (Belt/pin material)				*Min. No. drive sprocket per shaft	Number of wear strips (Min. No.)	
		POM-D/PA6.6				PP/PA6.6				POM-D/PA6.6		PP/PA6.6			**Carry (pcs)	**Return (pcs)
		Straight sections		Curve sections		Straight sections		Curve sections		kg/m	lb/ft	kg/m	lb/ft			
mm	in	N	lbf	N	lbf	N	lbf	N	lbf	kg/m	lb/ft	kg/m	lb/ft			
250	9.8	10000	2248	2440	549	5000	1124	1440	324	2.5	1.65	1.5	1.01	2	2	2
326	12.8	13040	2931	2440	549	6520	1466	1440	324	3.2	2.15	2.0	1.31	3	3	2
403	15.9	16120	3624	3110	699	8060	1812	1960	441	3.9	2.65	2.4	1.63	3	3	2
479	18.9	19160	4307	3110	699	9580	2154	1960	441	4.7	3.15	2.9	1.93	5	4	2
555	21.9	22200	4991	3110	699	11100	2495	1960	441	5.4	3.66	3.3	2.24	5	4	2
631	24.8	25240	5674	3110	699	12620	2837	1960	441	6.2	4.16	3.8	2.54	5	5	3
708	27.9	28320	6366	3110	699	14160	3183	1960	441	6.9	4.66	4.2	2.85	5	5	3
784	30.9	31360	7050	3110	699	15680	3525	1960	441	7.7	5.16	4.7	3.16	7	6	3
860	33.9	34400	7733	3110	699	17200	3867	1960	441	8.4	5.66	5.2	3.47	7	6	3
936	36.9	37440	8417	3110	699	18720	4208	1960	441	9.2	6.16	5.6	3.77	7	7	4
1013	39.9	40520	9109	3110	699	20260	4554	1960	441	9.9	6.67	6.1	4.08	7	7	4

Additional non-standard belt widths are available in steps of 25.4 mm (1.00 in).

General belt tolerance is +0/-0.4% at 23°C/73°F. For exact belt width contact Customer Service. Non standard belt width on request.

\*Max. Load per Drive Sprocket. Belt material: POM-D 2500 N (562 lbf), PP 1200 N (270 lbf).

\*\*Max. Spacing between wear strips, Carry: 152 mm (6 in); Return: 304 mm (12 in).

 = Single Link

### uni Flex L-ASB 47% Open Radius 2.2

Belt width		Permissible tensile force (Belt/pin material)								Belt weight (Belt/pin material)				*Min. No. drive sprocket per shaft	Number of wear strips (Min. No.)	
		POM-D/PA6.6				PP/PA6.6				POM-D/PA6.6		PP/PA6.6			**Carry (pcs)	**Return (pcs)
		Straight sections		Curve sections		Straight sections		Curve sections		kg/m	lb/ft	kg/m	lb/ft			
mm	in	N	lbf	N	lbf	N	lbf	N	lbf	kg/m	lb/ft	kg/m	lb/ft			
250	9.8	10000	2248	2440	549	5000	1124	1440	324	2.5	1.65	1.5	1.01	2	2	2
326	12.8	13040	2931	2440	549	6520	1466	1440	324	3.2	2.15	2.0	1.31	3	3	2
403	15.9	16120	3624	3110	699	8060	1812	1960	441	3.9	2.65	2.4	1.63	3	3	2
479	18.9	19160	4307	3110	699	9580	2154	1960	441	4.7	3.15	2.9	1.93	5	4	2
555	21.9	22200	4991	3110	699	11100	2495	1960	441	5.4	3.66	3.3	2.24	5	4	2
631	24.8	25240	5674	3110	699	12620	2837	1960	441	6.2	4.16	3.8	2.54	5	5	3
708	27.9	28320	6366	3110	699	14160	3183	1960	441	6.9	4.66	4.2	2.85	5	5	3
784	30.9	31360	7050	3110	699	15680	3525	1960	441	7.7	5.16	4.7	3.16	7	6	3
860	33.9	34400	7733	3110	699	17200	3867	1960	441	8.4	5.66	5.2	3.47	7	6	3
936	36.9	37440	8417	3110	699	18720	4208	1960	441	9.2	6.16	5.6	3.77	7	7	4
1013	39.9	40520	9109	3110	699	20260	4554	1960	441	9.9	6.67	6.1	4.08	7	7	4
1089	42.9	43560	9792	3110	699	21780	4896	1960	441	10.7	7.17	6.5	4.39	9	8	4

Additional standard belt widths are available in steps of 76.2 mm (3.00 in) Additional non-standard belt widths are available in steps of 25.4 mm (1.00 in)

1699	66.9	67960	15277	3110	699	33980	7639	1960	441	16.7	11.19	10.2	6.85	13	12	6
------	------	-------	-------	------	-----	-------	------	------	-----	------	-------	------	------	----	----	---


Additional standard belt widths are available in steps of 76.2 mm (3.00 in) Additional non-standard belt widths are available in steps of 25.4 mm (1.00 in)

1927	75.9	77080	17328	3110	699	38540	8664	1960	441	18.9	12.69	11.6	7.77	13	13	7
------	------	-------	-------	------	-----	-------	------	------	-----	------	-------	------	------	----	----	---

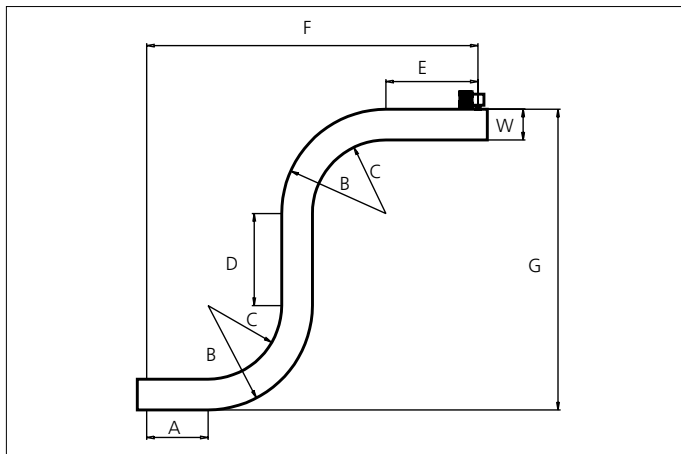
General belt tolerance is +0/-0.4% at 23°C/73°F. For exact belt width contact Customer Service. Non standard belt width on request.

\*Max. Load per Drive Sprocket. Belt material: POM-D 2500 N (562 lbf), PP 1200 N (270 lbf).

\*\*Max. Spacing between wear strips, Carry: 152 mm (6 in); Return: 304 mm (12 in).

 = Single Link

### Design Guidelines



	47% Open Radius 2.2 47% Open Radius 2.2	50% Open Radius 1.6 (inside)
<b>A</b>	min. 1.5 x W	min. 1.5 x W
<b>B</b>	min. 3.2 x W	min. 2.6 x W
<b>C</b>	min. 2.2 x W	min. 1.6 x W
<b>D</b>	min. 2.0 x W	min. 2.0 x W
<b>E</b>	min. 2.0 x W	min. 2.0 x W
<b>F</b>	min. 8.9 x W	min. 7.7 x W
<b>G</b>	min. 8.4 x W	min. 7.2 x W

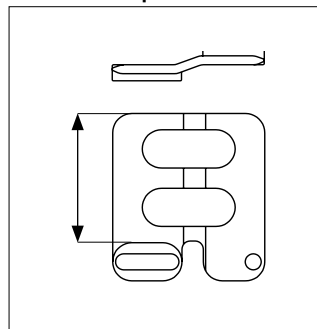
uni Flex L-ASB R1.6 can not be used in S-conveyors.

### Accessories

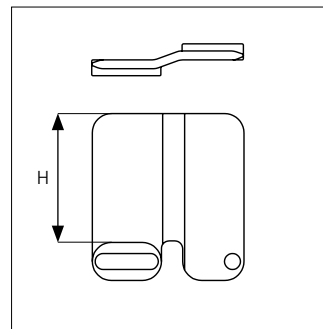
#### Side Guard



#### Side Guard Open



#### Side Guard

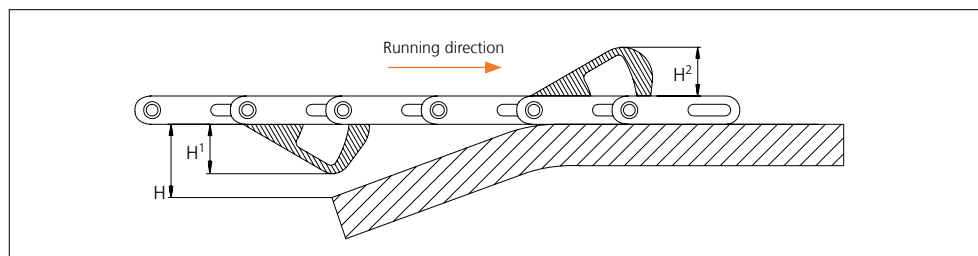
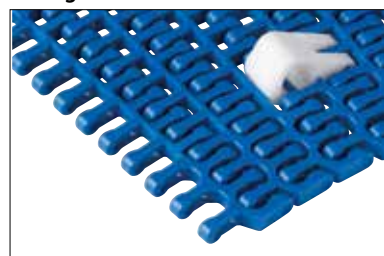


Type	Side Guard Material & color	H	
		mm	in
Side Guard	POM-D <b>B</b> <b>W</b>	10.0	0.39
		25.4	1.00
		50.0	1.97
Side Guard Open		50.0	1.97

\* Min. indent for Side Guard is: 80.0 mm (3.15 in) and Increment 25.4 mm (1.00 in)  
Non Standard material and color: See uni Material and Color Overview.

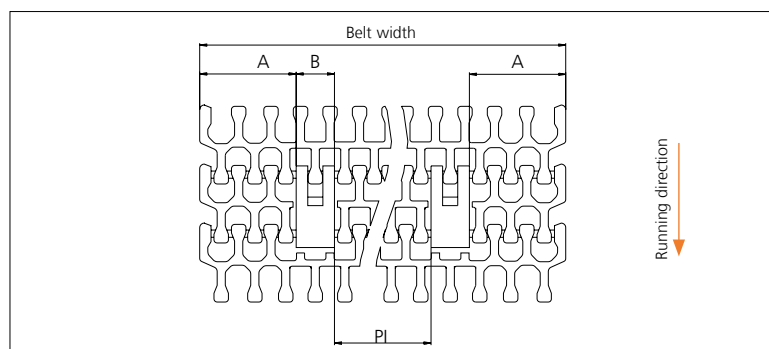
### Accessories

#### AmFlight



Type	Material & color	H	H <sup>1</sup>		H <sup>2</sup>	
			mm	in	mm	in
AmFlight	PE <b>W</b>	H > H <sup>1</sup>	25.4	1.00	26.0	1.02

Other Non Standard option: See uni AmFlight Overview.



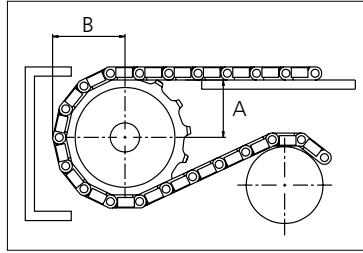
	mm	in
<b>A min</b>	83.0	3.27
<b>B</b>	33.0	1.30
<b>PI min</b>	68.5	2.70

Increment: 25.4 mm (1.00 in)

## Sprocket

No. of teeth	Bore size													Overall diameter		Pitch diameter		Hub diameter		Dimension A		Dimension B		Single row/Two way	Double row/Two way	Molded PA6 LG	Machined PA6 N
	Pilot Bore	in	0.75	0.79	0.98	1.00	1.18	1.25	1.50	1.57	2.36	2.50	3.54														
	mm	19.1	20.0	25.0	25.4	30.0	31.8	38.1	40.0	60.0	63.5	90.0	mm	in	mm	in	mm	in	mm	in							
Z08	x				●	●			●				134.6	5.30	131.5	5.18	107.6	4.23	54.4	2.15	74.9	2.95	x			x	
Z10	x				●	●	●		●				168.3	6.63	164.0	6.46	141.3	5.56	71.4	2.81	90.8	3.57	x			x	
Z12	x				●		●	●	●	●		■	203.5	8.01	196.5	7.74	176.5	6.94	88.2	3.47	106.8	4.20	x			x	
Z15	x				●		●	●	●	●		■	253.4	9.98	245.4	9.66	226.4	8.91	113.2	4.46	131.0	5.16	x			x	

■ Machined sprocket ● Machined sprocket



Non standard material and color: See uni Material and Color Overview.

Other sprocket sizes are available upon request

Two-part sprocket are available upon request

Other bore sizes are available upon request

uni Retainer Rings: See uni Retainer Ring data sheet

Width of tooth = 15.0 mm (0.59 in)

Width of sprocket = 30.0 mm (1.18 in)

Max. load per sprocket shown does not take bore size into account.

Please also ensure that sufficient size shaft is chosen for corresponding load.

For correct sprocket position: See uni Assembly Instructions for uni Flex L-ASB.

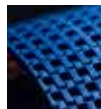
For more detailed sprocket information, contact Customer Service.



Conveyor Belts



Seamless Belts



Modular Belts



Timing Belts



Transmission Belts



Fabrication & service

Expert advice, quality solutions and local service for all your belting needs  
[www.ammeraalbeltech.com](http://www.ammeraalbeltech.com)

**Ammeraal Beltech Modular A/S**  
 Hjulmagervej 21  
 DK-7100 Vejle

T +45 7572 3100  
 F +45 7572 3348  
 admin@unichains.com  
 www.unichains.com

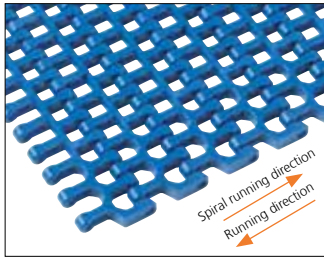
This information is subject to alteration due to continuous development. Ammeraal Beltech will not be held liable for the incorrect use of the above stated information. This information replaces previous information. All activities performed and services rendered by Ammeraal Beltech are subject to general terms and conditions of sale and delivery, as applied by its operating companies.



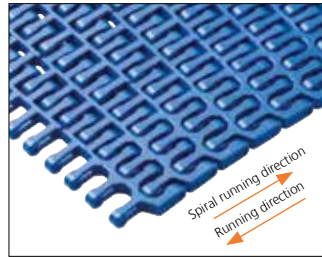


# Plastic Modular Belt

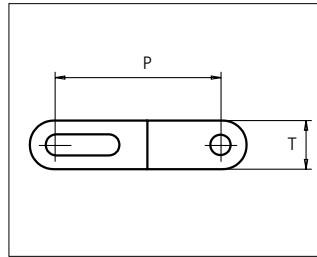
## Series uni Flex L-ASB



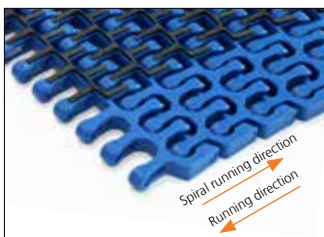
50% Open Radius 1.6



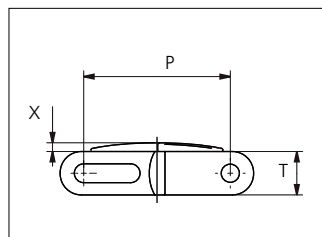
47% Open Radius 2.2



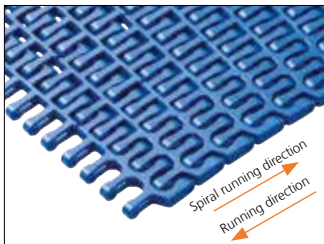
Sideflexing belt  
 Nominal pitch: 50.8 mm (2.00 in)  
 Surface type: Flat  
 Surface opening: 47%/50%  
 Backflex radius: 100.0 mm (3.94 in)  
 Pin diameter: 6 mm (0.24 in)  
 Min. inside radius: R1.6 x belt width, R2.2 x belt width



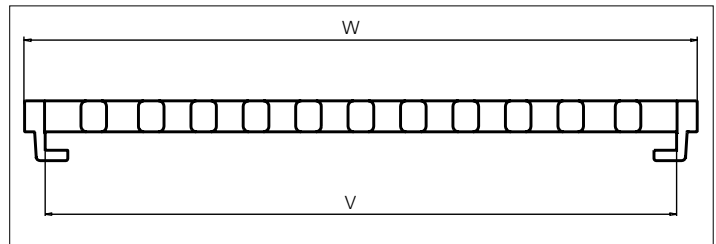
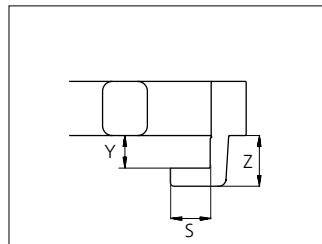
47/50% Open Rubber Top Radius 2.2



uni Flex L-ASB Rubber Top Radius 2.2: Indent min. 71.0 mm (2.80 in) and Increment 25.4 mm (1.00)  
 uni Flex L-ASB Rubber Top R1.6: Indent min. 97.0 mm (3.82 in) and Increment 25.4 mm (1.00 in).



47% Open Tab Radius 2.2



Type	Belt materials and colors	Pin materials and colors
47% Open Radius 2.2 47% Open Tab Radius 2.2 50% Open Radius 1.6	POM-D <b>B</b> <b>W</b> PP <b>B</b> <b>W</b>	PA6.6 <b>B</b>
47% Open Rubber Top Radius 2.2 47% Open Rubber Top Tab Radius 2.2 50% Open Rubber Top Radius 1.6	PP <b>B</b> + 03 <b>K</b>	

	mm	in		mm	in
<b>P (Nominal)</b>	50.8	2.00	<b>W</b>	325.9	12.83
<b>S</b>	11.0	0.43	<b>X</b>	3.0	0.12
<b>T</b>	15.0	0.59	<b>Y</b>	9.0	0.35
<b>V</b>	306.5	12.07	<b>Z</b>	14.0	0.55

Non standard material and color: See uni Material and Color Overview.

Alternative pin and lock materials:

⚡ Snap Pin A1: PP **W** PBT **LG** PA6.6 **B**

⚡ Lockpin: PBT **LG**



STANDARD

SIDE FLEXING

PITCH 50.8 MM/2.00 IN

### uni Flex L-ASB 50% Open Radius 1.6

Belt width		Permissible tensile force (Belt/pin material)								Belt weight (Belt/pin material)				*Min. No. drive sprocket per shaft	Number of wear strips (Min. No.)	
		POM-D/PA6.6				PP/PA6.6				POM-D/PA6.6		PP/PA6.6			**Carry (pcs)	**Return (pcs)
		Straight sections		Curve sections		Straight sections		Curve sections		kg/m	lb/ft	kg/m	lb/ft			
mm	in	N	lbf	N	lbf	N	lbf	N	lbf	kg/m	lb/ft	kg/m	lb/ft			
250	9.8	10000	2248	2440	549	5000	1124	1440	324	2.5	1.65	1.5	1.01	2	2	2
326	12.8	13040	2931	2440	549	6520	1466	1440	324	3.2	2.15	2.0	1.31	3	3	2
403	15.9	16120	3624	3110	699	8060	1812	1960	441	3.9	2.65	2.4	1.63	3	3	2
479	18.9	19160	4307	3110	699	9580	2154	1960	441	4.7	3.15	2.9	1.93	5	4	2
555	21.9	22200	4991	3110	699	11100	2495	1960	441	5.4	3.66	3.3	2.24	5	4	2
631	24.8	25240	5674	3110	699	12620	2837	1960	441	6.2	4.16	3.8	2.54	5	5	3
708	27.9	28320	6366	3110	699	14160	3183	1960	441	6.9	4.66	4.2	2.85	5	5	3
784	30.9	31360	7050	3110	699	15680	3525	1960	441	7.7	5.16	4.7	3.16	7	6	3
860	33.9	34400	7733	3110	699	17200	3867	1960	441	8.4	5.66	5.2	3.47	7	6	3
936	36.9	37440	8417	3110	699	18720	4208	1960	441	9.2	6.16	5.6	3.77	7	7	4
1013	39.9	40520	9109	3110	699	20260	4554	1960	441	9.9	6.67	6.1	4.08	7	7	4

Additional non-standard belt widths are available in steps of 25.4 mm (1.00 in).

General belt tolerance is +0/-0.4% at 23°C/73°F. For exact belt width contact Customer Service. Non standard belt width on request.

\*Max. Load per Drive Sprocket. Belt material: POM-D 2500 N (562 lbf), PP 1200 N (270 lbf).

\*\*Max. Spacing between wear strips, Carry: 152 mm (6 in); Return: 304 mm (12 in).

 = Single Link

### uni Flex L-ASB 47% Open Radius 2.2

Belt width		Permissible tensile force (Belt/pin material)								Belt weight (Belt/pin material)				*Min. No. drive sprocket per shaft	Number of wear strips (Min. No.)	
		POM-D/PA6.6				PP/PA6.6				POM-D/PA6.6		PP/PA6.6			**Carry (pcs)	**Return (pcs)
		Straight sections		Curve sections		Straight sections		Curve sections		kg/m	lb/ft	kg/m	lb/ft			
mm	in	N	lbf	N	lbf	N	lbf	N	lbf	kg/m	lb/ft	kg/m	lb/ft			
250	9.8	10000	2248	2440	549	5000	1124	1440	324	2.5	1.65	1.5	1.01	2	2	2
326	12.8	13040	2931	2440	549	6520	1466	1440	324	3.2	2.15	2.0	1.31	3	3	2
403	15.9	16120	3624	3110	699	8060	1812	1960	441	3.9	2.65	2.4	1.63	3	3	2
479	18.9	19160	4307	3110	699	9580	2154	1960	441	4.7	3.15	2.9	1.93	5	4	2
555	21.9	22200	4991	3110	699	11100	2495	1960	441	5.4	3.66	3.3	2.24	5	4	2
631	24.8	25240	5674	3110	699	12620	2837	1960	441	6.2	4.16	3.8	2.54	5	5	3
708	27.9	28320	6366	3110	699	14160	3183	1960	441	6.9	4.66	4.2	2.85	5	5	3
784	30.9	31360	7050	3110	699	15680	3525	1960	441	7.7	5.16	4.7	3.16	7	6	3
860	33.9	34400	7733	3110	699	17200	3867	1960	441	8.4	5.66	5.2	3.47	7	6	3
936	36.9	37440	8417	3110	699	18720	4208	1960	441	9.2	6.16	5.6	3.77	7	7	4
1013	39.9	40520	9109	3110	699	20260	4554	1960	441	9.9	6.67	6.1	4.08	7	7	4
1089	42.9	43560	9792	3110	699	21780	4896	1960	441	10.7	7.17	6.5	4.39	9	8	4

Additional standard belt widths are available in steps of 76.2 mm (3.00 in) Additional non-standard belt widths are available in steps of 25.4 mm (1.00 in)

1699	66.9	67960	15277	3110	699	33980	7639	1960	441	16.7	11.19	10.2	6.85	13	12	6
------	------	-------	-------	------	-----	-------	------	------	-----	------	-------	------	------	----	----	---


Additional standard belt widths are available in steps of 76.2 mm (3.00 in) Additional non-standard belt widths are available in steps of 25.4 mm (1.00 in)

1927	75.9	77080	17328	3110	699	38540	8664	1960	441	18.9	12.69	11.6	7.77	13	13	7
------	------	-------	-------	------	-----	-------	------	------	-----	------	-------	------	------	----	----	---

General belt tolerance is +0/-0.4% at 23°C/73°F. For exact belt width contact Customer Service. Non standard belt width on request.

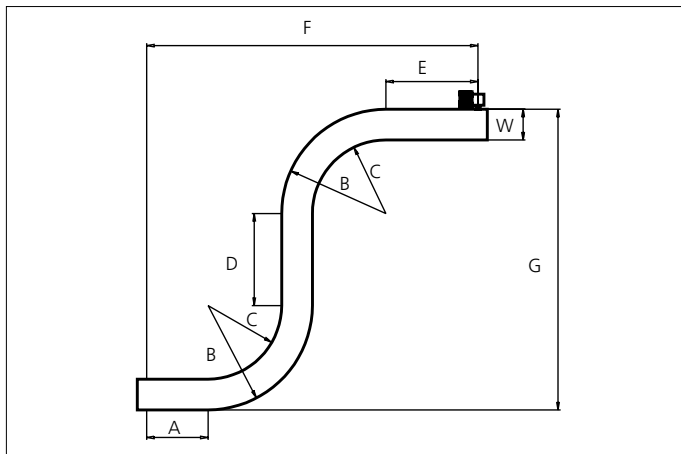
\*Max. Load per Drive Sprocket. Belt material: POM-D 2500 N (562 lbf), PP 1200 N (270 lbf).

\*\*Max. Spacing between wear strips, Carry: 152 mm (6 in); Return: 304 mm (12 in).

 = Single Link



### Design Guidelines



	47% Open Radius 2.2 47% Open Radius 2.2	50% Open Radius 1.6 (inside)
<b>A</b>	min. 1.5 x W	min. 1.5 x W
<b>B</b>	min. 3.2 x W	min. 2.6 x W
<b>C</b>	min. 2.2 x W	min. 1.6 x W
<b>D</b>	min. 2.0 x W	min. 2.0 x W
<b>E</b>	min. 2.0 x W	min. 2.0 x W
<b>F</b>	min. 8.9 x W	min. 7.7 x W
<b>G</b>	min. 8.4 x W	min. 7.2 x W

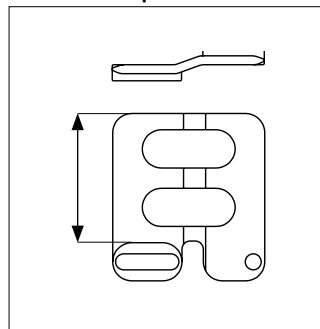
uni Flex L-ASB R1.6 can not be used in S-conveyors.

### Accessories

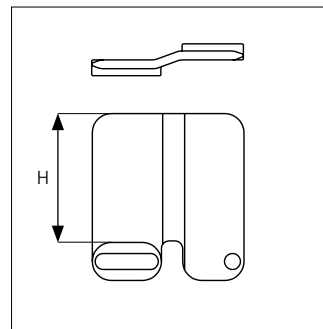
#### Side Guard



#### Side Guard Open



#### Side Guard

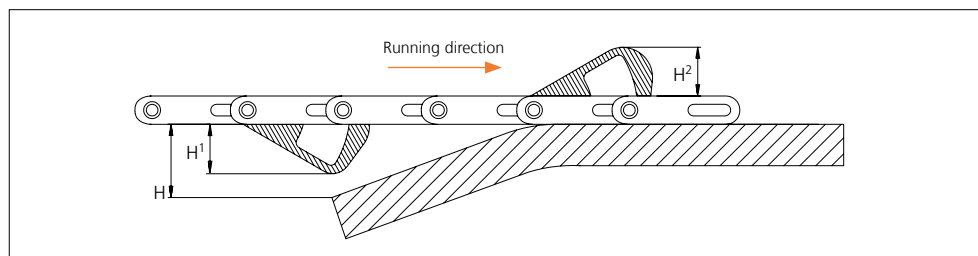
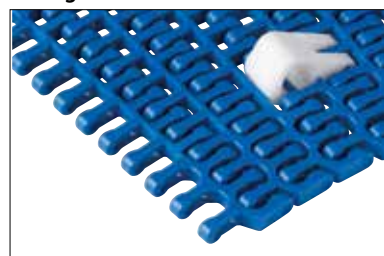


Type	Side Guard Material & color	H	
		mm	in
Side Guard	POM-D <b>B</b> <b>W</b>	10.0	0.39
		25.4	1.00
		50.0	1.97
Side Guard Open		50.0	1.97

\* Min. indent for Side Guard is: 80.0 mm (3.15 in) and Increment 25.4 mm (1.00 in)  
Non Standard material and color: See uni Material and Color Overview.

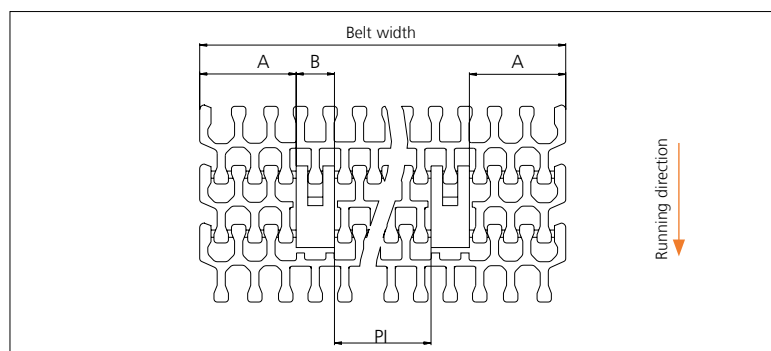
### Accessories

#### AmFlight



Type	Material & color	H	H <sup>1</sup>		H <sup>2</sup>	
			mm	in	mm	in
AmFlight	PE <b>W</b>	H > H <sup>1</sup>	25.4	1.00	26.0	1.02

Other Non Standard option: See uni AmFlight Overview.



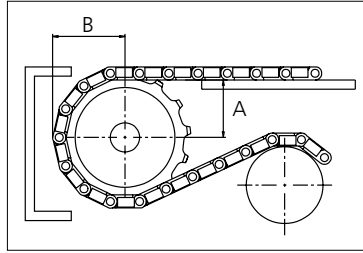
	mm	in
<b>A min</b>	83.0	3.27
<b>B</b>	33.0	1.30
<b>PI min</b>	68.5	2.70

Increment: 25.4 mm (1.00 in)

## Sprocket

No. of teeth	Bore size													Overall diameter		Pitch diameter		Hub diameter		Dimension A		Dimension B		Single row/Two way	Double row/Two way	Molded PA6 LG	Machined PA6 N
	Pilot Bore	in	0.75	0.79	0.98	1.00	1.18	1.25	1.50	1.57	2.36	2.50	3.54														
	mm	19.1	20.0	25.0	25.4	30.0	31.8	38.1	40.0	60.0	63.5	90.0	mm	in	mm	in	mm	in	mm	in							
Z08	x				●	●			●				134.6	5.30	131.5	5.18	107.6	4.23	54.4	2.15	74.9	2.95	x			x	
Z10	x				●	●	●		●				168.3	6.63	164.0	6.46	141.3	5.56	71.4	2.81	90.8	3.57	x			x	
Z12	x				●		●	●	●	●		■	203.5	8.01	196.5	7.74	176.5	6.94	88.2	3.47	106.8	4.20	x			x	
Z15	x				●		●	●	●	●		■	253.4	9.98	245.4	9.66	226.4	8.91	113.2	4.46	131.0	5.16	x			x	

■ Machined sprocket ● Machined sprocket



Non standard material and color: See uni Material and Color Overview.

Other sprocket sizes are available upon request

Two-part sprocket are available upon request

Other bore sizes are available upon request

uni Retainer Rings: See uni Retainer Ring data sheet

Width of tooth = 15.0 mm (0.59 in)

Width of sprocket = 30.0 mm (1.18 in)

Max. load per sprocket shown does not take bore size into account.

Please also ensure that sufficient size shaft is chosen for corresponding load.

For correct sprocket position: See uni Assembly Instructions for uni Flex L-ASB.

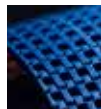
For more detailed sprocket information, contact Customer Service.



Conveyor Belts



Seamless Belts



Modular Belts



Timing Belts



Transmission Belts



Fabrication & service

Expert advice, quality solutions and local service for all your belting needs  
[www.ammeraalbeltech.com](http://www.ammeraalbeltech.com)

**Ammeraal Beltech Modular A/S**  
 Hjulmagervej 21  
 DK-7100 Vejle

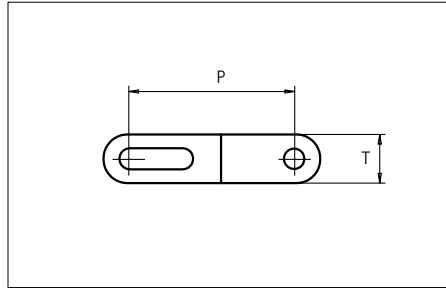
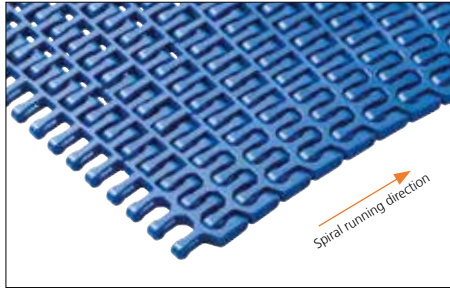
T +45 7572 3100  
 F +45 7572 3348  
 admin@unichains.com  
 www.unichains.com

This information is subject to alteration due to continuous development. Ammeraal Beltech will not be held liable for the incorrect use of the above stated information. This information replaces previous information. All activities performed and services rendered by Ammeraal Beltech are subject to general terms and conditions of sale and delivery, as applied by its operating companies.



# Plastic Modular Belt

Series **uni Flex L-ASB** Type **47% Open Radius 2.5/3.0/3.5/4.0**



Sideflexing belt  
 Nominal pitch: 50.8 mm (2.00 in)  
 Surface type: Flat  
 Surface opening: 47%/50%  
 Backflex radius: 65.0 mm (2.56 in)  
 Pin diameter: 6 mm (0.24 in)  
 Min. inside radius:  
 2.5 / 3.0 / 3.5 / 4.0 x belt width

<b>Recommended Belt material &amp; color</b>	POM-D <b>B</b>		<b>mm</b>	<b>in</b>
<b>Recommended Pin material &amp; color</b>	PA6.6 <b>B</b>		<b>P (Nominal)</b>	50.8
			<b>T</b>	15.0
				2.00
				0.59

Other non standard material and color: See uni Material and Color Overview.

Alternative pin and lock: Snap Pin A1

Belt width		Permissible tensile force (Belt/pin material)								Belt weight (Belt/pin material)				*Min. No. drive sprocket per shaft	Number of wear strips (Min. No.)	
		POM-D/PA6.6				PP/PA6.6				POM-D/PA6.6		PP/PA6.6			**Carry (pcs)	**Return (pcs)
		Straight sections		Curve sections		Straight sections		Curve sections		kg/m	lb/ft	kg/m	lb/ft			
mm	in	N	lbf	N	lbf	N	lbf	N	lbf	kg/m	lb/ft	kg/m	lb/ft			
250	9.8	10000	2248	2440	549	5000	1124	1440	324	2.5	1.65	1.5	1.01	2	2	2
326	12.8	13040	2931	2440	549	6520	1466	1440	324	3.2	2.15	2.0	1.31	3	3	2
403	15.9	16120	3624	3110	699	8060	1812	1960	441	3.9	2.65	2.4	1.63	3	3	2
479	18.9	19160	4307	3110	699	9580	2154	1960	441	4.7	3.15	2.9	1.93	5	4	2
555	21.9	22200	4991	3110	699	11100	2495	1960	441	5.4	3.66	3.3	2.24	5	4	2
631	24.8	25240	5674	3110	699	12620	2837	1960	441	6.2	4.16	3.8	2.54	5	5	3
708	27.9	28320	6366	3110	699	14160	3183	1960	441	6.9	4.66	4.2	2.85	5	5	3
784	30.9	31360	7050	3110	699	15680	3525	1960	441	7.7	5.16	4.7	3.16	7	6	3
860	33.9	34400	7733	3110	699	17200	3867	1960	441	8.4	5.66	5.2	3.47	7	6	3
936	36.9	37440	8417	3110	699	18720	4208	1960	441	9.2	6.16	5.6	3.77	7	7	4
1013	39.9	40520	9109	3110	699	20260	4554	1960	441	9.9	6.67	6.1	4.08	7	7	4
1089	42.9	43560	9792	3110	699	21780	4896	1960	441	10.7	7.17	6.5	4.39	9	8	4

Additional standard belt widths are available in steps of 76.2 mm (3.00 in) Additional non-standard belt widths are available in steps of 25.4 mm (1.00 in)

1699	66.9	67960	15277	3110	699	33980	7639	1960	441	16.7	11.19	10.2	6.85	13	12	6
------	------	-------	-------	------	-----	-------	------	------	-----	------	-------	------	------	----	----	---

Additional standard belt widths are available in steps of 76.2 mm (3.00 in) Additional non-standard belt widths are available in steps of 25.4 mm (1.00 in)

1927	75.9	77080	17328	3110	699	38540	8664	1960	441	18.9	12.69	11.6	7.77	13	13	7
------	------	-------	-------	------	-----	-------	------	------	-----	------	-------	------	------	----	----	---

General belt tolerance is +0/-0.4% at 23°C/73°F. For exact belt width contact Customer Service. Non standard belt width on request.

\*Max. Load per Drive Sprocket. Belt material: POM-D 2500 N (562 lbf), PP 1200 N (270 lbf).

\*\*Max. Spacing between wear strips, Carry: 152 mm (6 in); Return: 304 mm (12 in).

= Single Link



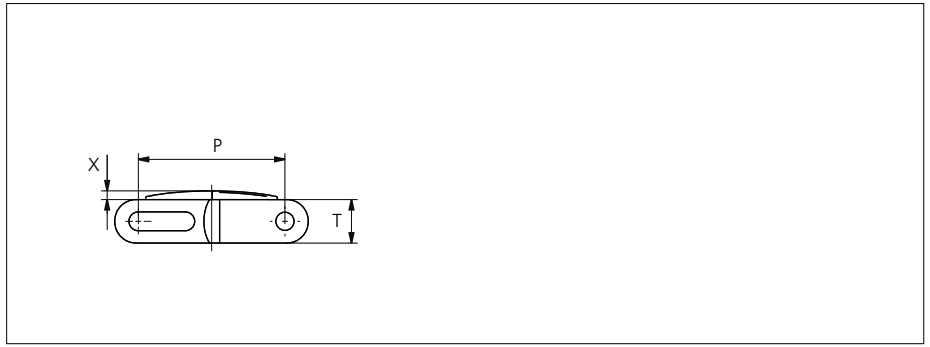
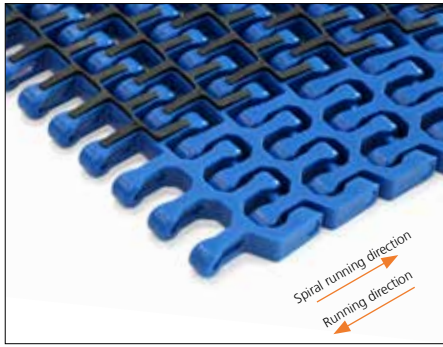
NON STANDARD

SIDE FLEXING

PITCH 25.4 MM/1.00 IN

## Accessories

### Rubber Top



Type	Recommended belt materials and colors	Recommended pin materials and colors	P		T		X	
			mm	in	mm	in	mm	in
47% Open Rubber Top Radius 2.2 47% Open Rubber Top Tab Radius 2.2 50% Open Rubber Top Radius 1.6	PP <b>B</b> + 03 <b>K</b>	PA6.6 <b>B</b>	50.8	2.00	15.0	0.59	3.0	0.12

uni Flex L-ASB Rubber Top Radius 2.2: Indent min. 71.0 mm (2.80 in) and Increment 25.4 mm (1.00).

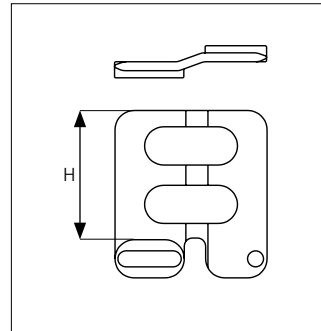
uni Flex L-ASB Rubber Top R1.6: Indent min. 97.0 mm (3.82 in) and Increment 25.4 mm (1.00 in).

## Accessories

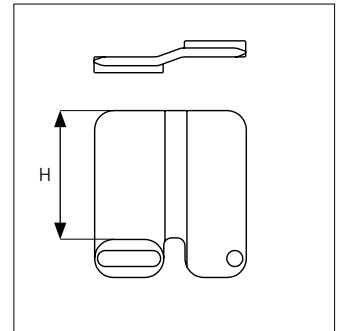
### Side Guard



#### Side Guard Open



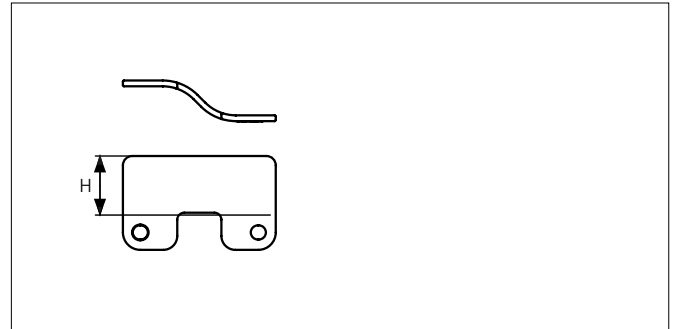
#### Side Guard



### Side Guard Outside Only



#### Side Guard Outside Only



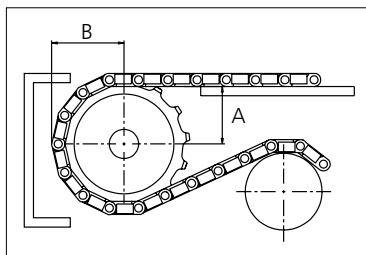
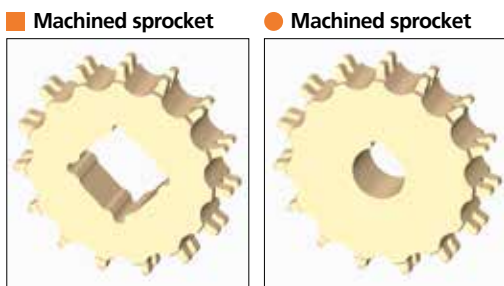
Type	Recommended Material & color	H	
		mm	in
Side Guard	POM-D <b>B</b>	10.0	0.39
Side Guard Open		25.4	1.00
Side Guard Outside Only		50.0	1.97
Side Guard Outside Only		25.4	1.00

\* Min. indent for Side Guard is: 80.0 mm (3.15 in) and Increment 25.4 mm (1.00 in)

Non Standard material and color: See uni Material and Color Overview.

### Sprocket

No. of teeth	Pilot Bore	Bore size														Overall diameter		Pitch diameter		Hub diameter		Dimension A		Dimension B		Single row/Two way	Double row/Two way	Material	
		in	0.75	0.79	0.98	1.00	1.18	1.25	1.50	1.57	2.36	2.50	3.54	mm	in													mm	in
		mm	19.1	20.0	25.0	25.4	30.0	31.75	38.1	40.0	60.0	63.5	90.0									PA6	PA6						
Z07	x			●	●	●	●																			x		x	
Z09	x			●	●	●	●	●																		x		x	
Z12	x			●	●	●	●	●	■																x		x		
Z15	x			●	●	●	●	●	■	■	■														x		x		
Z18	x			●	●	●	●	●	■	■	■	■													x		x		



Non standard material and color: See uni Material and Color Overview.

Other sprocket sizes are available upon request  
 Two-part sprocket are available upon request  
 Other bore sizes are available upon request  
 uni Retainer Rings: See uni Retainer Ring data sheet  
 Width of tooth = 7.0 mm (0.28 in)  
 Width of sprocket = 30.0 mm (1.18 in)

Max. load per sprocket shown does not take bore size into account.  
 Please also ensure that sufficient size shaft is chosen for corresponding load.

For correct sprocket position: See uni Assembly Instructions for uni Flex ASB.  
 For more detailed sprocket information, contact Customer Service.



Conveyor Belts



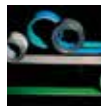
Seamless Belts



Modular Belts



Timing Belts



Transmission Belts



Fabrication & service

Expert advice, quality solutions  
and local service  
for all your belting needs  
[www.ammeraalbeltech.com](http://www.ammeraalbeltech.com)

**Ammeraal Beltech Modular A/S**  
Hjulmagervej 21  
DK-7100 Vejle

T +45 7572 3100  
F +45 7572 3348  
admin@unichains.com  
www.unichains.com

This information is subject to alteration due to continuous development. Ammeraal Beltech will not be held liable for the incorrect use of the above stated information. This information replaces previous information. All activities performed and services rendered by Ammeraal Beltech are subject to general terms and conditions of sale and delivery, as applied by its operating companies.

# Local Contacts

## Austria

T +43 171728 133  
info-de@ammeraalbeltech.com  
www.ammeraalbeltech.at

## Belgium

T +32 2 466 03 00  
info-be@ammeraalbeltech.com  
www.ammeraalbeltech.be

## Canada

T +1 905 890 1311  
info-ca@ammeraalbeltech.com  
www.ammeraalbeltech.com

## Chile

T +56 2 233 12900  
info-cl@ammeraalbeltech.com  
www.ammeraalbeltech.cl

## China

T +86 512 8287 2709  
info-cn@ammeraalbeltech.com  
www.ammeraalbeltech.com.cn

## Czech Republic

T +420 567 117 211  
info-cz@ammeraalbeltech.com  
www.ammeraalbeltech.cz

## Denmark

T + 45 7572 3100  
info-dk@ammeraalbeltech.com  
www.unichains.com

## Finland

T +358 207 911 400  
info-fi@ammeraalbeltech.com  
www.ammeraalbeltech.fi

## France

T +33 3 20 90 36 00  
info-fr@ammeraalbeltech.com  
www.ammeraalbeltech.fr

## Germany

T +49 4152 937-0  
info-de@ammeraalbeltech.com  
www.ammeraalbeltech.de

## Hungary

T +36 30 311 6099  
info-hu@ammeraalbeltech.com  
www.ammeraalbeltech.hu

## India

T +91 44 265 34 244  
info-in@ammeraalbeltech.com  
www.ammeraalbeltech.com

## Italy

T +39 051 660 60 06  
info-it@ammeraalbeltech.com  
www.ammeraalbeltech.it

## Luxembourg

T +352 26 48 38 56  
info-lu@ammeraalbeltech.com  
www.ammeraal-beltech.lu

## Malaysia

T +60 3 806 188 49  
info-my@ammeraalbeltech.com  
www.ammeraalbeltech.com

## Netherlands

T +31 72 57 51212  
info-nl@ammeraalbeltech.com  
www.ammeraalbeltech.nl

## Poland

T +48 32 44 77 179  
info-pl@ammeraalbeltech.com  
www.ammeraalbeltech.com

## Portugal

T +351 22 947 94 40  
info-pt@ammeraalbeltech.com  
www.ammeraalbeltech.pt

## Singapore

T +65 62739767  
info-sg@ammeraalbeltech.com  
www.ammeraalbeltech.com

## Slovakia

T +421 2 55648541-2  
info-sk@ammeraalbeltech.com  
www.ammeraalbeltech.sk

## South Korea

T +82 31 448 3613-7  
info-kr@ammeraalbeltech.com  
www.ammeraalbeltech.co.kr

## Spain

T +34 93 718 3054  
info-es@ammeraalbeltech.com  
www.ammeraalbeltech.es

## Sweden

T +46 44 780 3010  
info-se@ammeraalbeltech.com  
www.ammeraalbeltech.se

## Switzerland

T +41 55 2253 535  
info-ch@ammeraalbeltech.com  
www.ammeraalbeltech.ch

## Thailand

T +66 2 902 2604-13  
info-th@ammeraalbeltech.com  
www.ammeraalbeltech.com

## United Kingdom

T +44 1992 500550  
info-uk@ammeraalbeltech.com  
www.ammeraalbeltech.co.uk

## United States

T +1 847 673 6720  
info-us@ammeraalbeltech.com  
www.ammeraalbeltech.com

## Vietnam

T +84 8 376 562 05  
info-vn@ammeraalbeltech.com  
www.ammeraalbeltech.com.vn

## Global Headquarters:

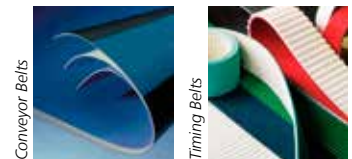
### Ammeraal Beltech Holding B.V.

P.O. Box 38  
1700 AA Heerhugowaard  
The Netherlands

T +31 (0)72 575 1212  
F +31 (0)72 571 6455

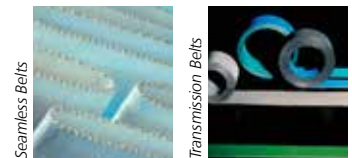
info@ammeraalbeltech.com  
www.ammeraalbeltech.com

Expert advice, quality solutions  
and local service  
for all your belting needs



Conveyor Belts

Timing Belts



Seamless Belts

Transmission Belts



Modular Belts

Fabrication & service

... and 150 more service contact points on [www.ammeraalbeltech.com](http://www.ammeraalbeltech.com)