



Ammeraal Beltech Modular

Innovative belt and chain solutions
for every industry & application



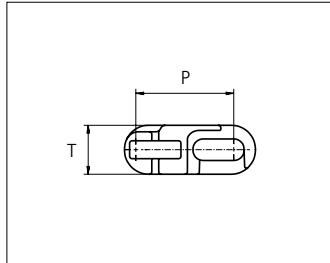
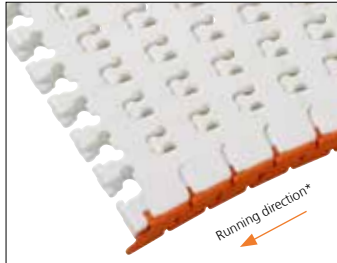
Content

uni Flex ONE EO R1.6	page 3 - 10
uni Flex ONE EOO R1.6	page 11 - 18
uni Flex ONE ER R1.6	page 19 - 26
uni Flex ONE EW R1.6	page 27 - 34
uni Flex ONE EWC R1.6	page 35 - 42
uni Flex ONE O R1.6	page 43 - 50



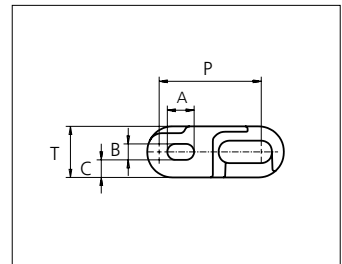
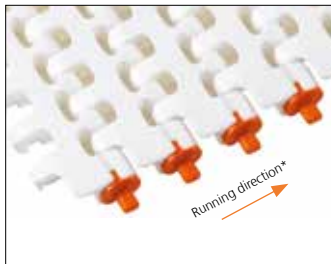
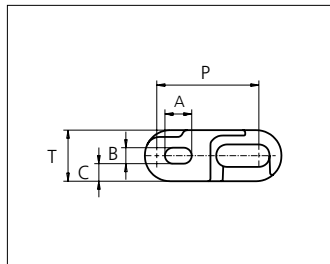
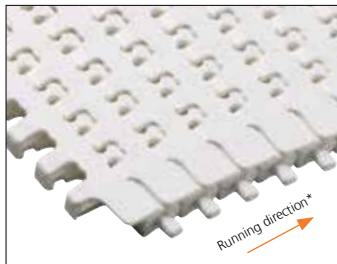
Plastic Modular Belt

Series uni Flex ONE



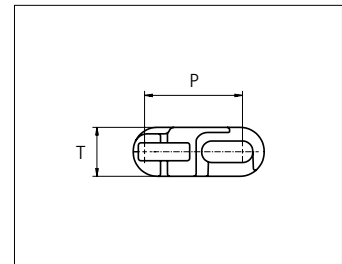
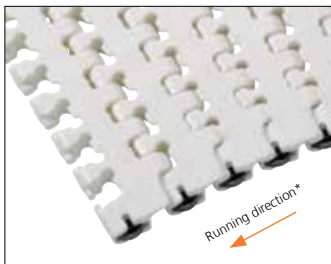
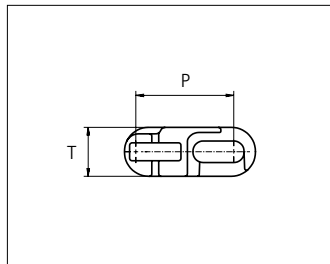
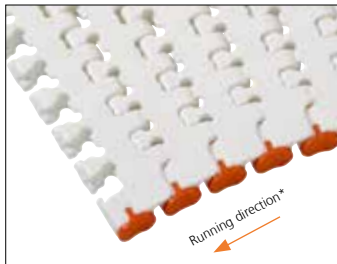
Sideflexing belt
 Nominal pitch: 38.1 mm (1.50 in)
 Surface type: Flat
 Surface opening: 15%
 Backflex radius: 50.0 mm (1.97 in)
 Min. inside radius R1.6 x belt width

uni Flex ONE EWC R1.6
 Surface Opening: 15%



uni Flex ONE O R1.6
 Surface Opening: 15%

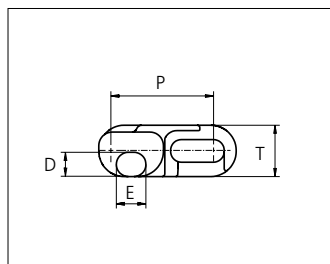
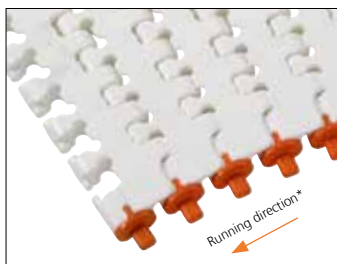
uni Flex ONE EO R1.6
 Surface Opening: 15%



uni Flex ONE EW R1.6
 Surface Opening: 15%

uni Flex ONE ER R1.6
 Surface Opening: 15%

uni Flex ONE ER is not available for use in North America.



uni Flex ONE EOO R1.6
 Surface Opening: 15%

*uni-chains recommends this travel direction. However travel in both directions is possible.

	mm	in		mm	in
P (Nominal)	38.1	1.50	D	9.0	0.35
A	10.0	0.39	E	11.0	0.43
B	5.9	0.23	T	19.1	0.75
C	6.6	0.26	-	-	-

Belt material & color	POM-SX W B **
O-Tab, Wearpart material & color	POM DK O
EWC Wearpart material & color	K750: POM DK Y K1200, K1500, K1800: POM DK O K2400: POM DK B

**Please note that uni Flex ONE in POM-SX blue is not according to the standard color quality for blue. Small variations may occur.



STANDARD
SIDE FLEXING
PITCH 38.1 MM/1.50 IN

Belt width			Type	Permissible tensile force Belt/pin material				Belt weight Belt material		*Recommended No. drive sprocket per shaft	Number of wear strips (Min No.)	
				POM-SX				POM-SX			**Carry (pcs)	**Return (pcs)
Size	mm	in		Straight sections		Curve sections		kg/m	lb/ft			
			N	lbf	N	lbf						
K750	190.5	7.5	O	2400	540	2000	450	2.5	1.68	2	2	2
			EW					2.4	1.61			
			EO/EOO					2.5	1.68			
			ER					2.6	1.75			
			EWC					2.7	1.81			
K1200	304.8	12.0	O	4000	899	3400	764	4.0	2.69	4	3	2
			EW					3.9	2.62			
			EO/EOO					4.0	2.69			
			ER					4.1	2.76			
			EWC					4.2	2.82			
K1500	381.0	15.0	O	6400	1439	3500	787	4.9	3.29	6	3	2
			EW					4.9	3.29			
			EO/EOO					4.9	3.29			
			ER					5.0	3.36			
			EWC					5.1	3.43			
K1800	457.2	18.0	O	8200	1843	3600	809	6.1	4.10	6	4	2
			EW					6.1	4.10			
			EO/EOO					6.1	4.10			
			ER					6.2	4.17			
			EWC					6.2	4.17			
K2400	609.6	24.0	O	12000	2698	3800	854	7.9	5.31	6	5	3
			EW					7.8	5.24			
			EO/EOO					7.8	5.24			
			ER					7.9	5.31			
			EWC					8.1	5.44			

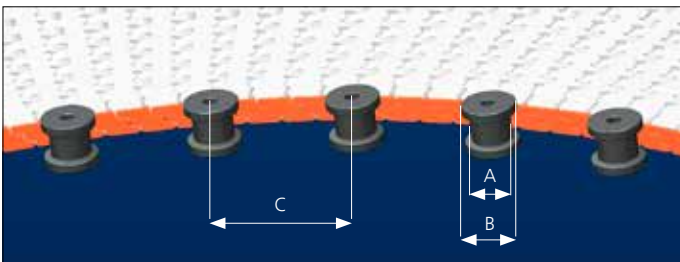
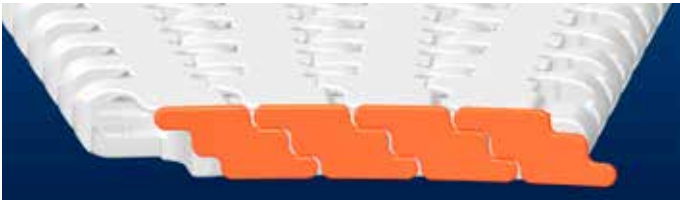
General belt tolerance is +0/-0.4% at 23°C/73°F.

*Max. Load per Drive Sprocket. Belt material: POM-SX 2500 N (562 lbf).

**Max. Spacing between wear strips, Carry: 152 mm (6 in); Return: 304 mm (12 in).

Design Guide Lines

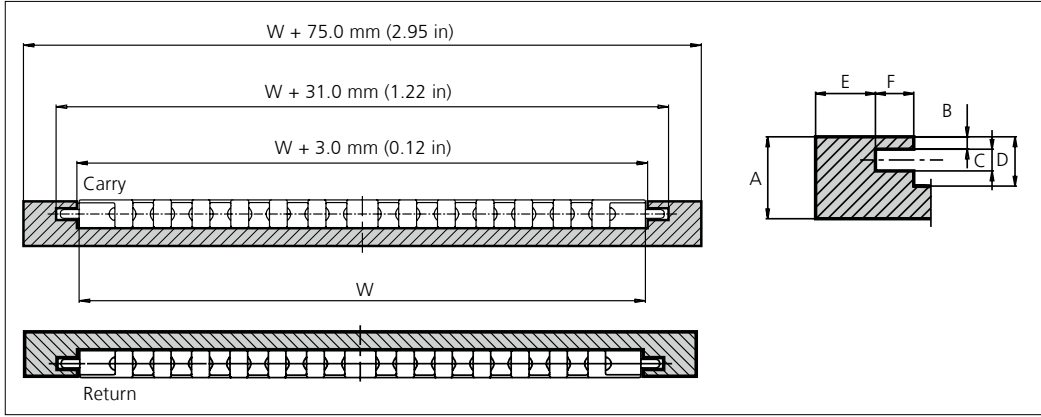
uni Flex One EWC



	mm	in
A	min \varnothing 30	min \varnothing 1¼
B	A + min 12	A + min ½
C	100-150	4-6

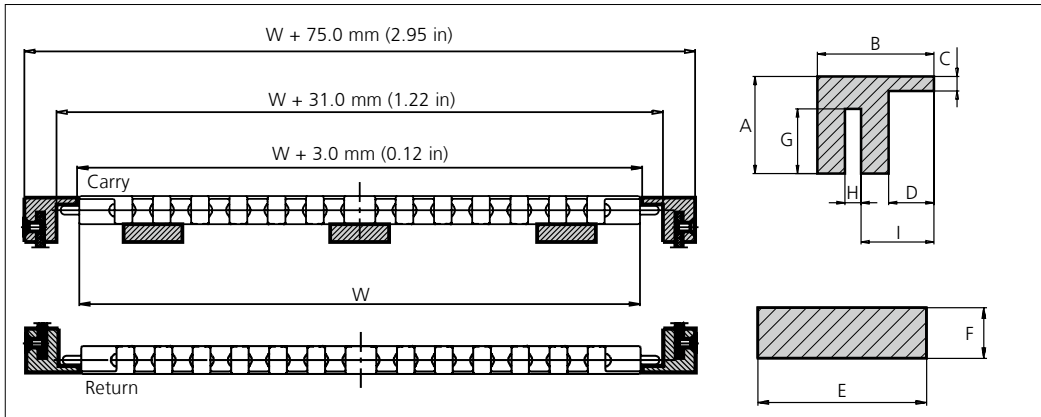
Profiles for uni Flex ONE O/EO

Compact Profile Configuration



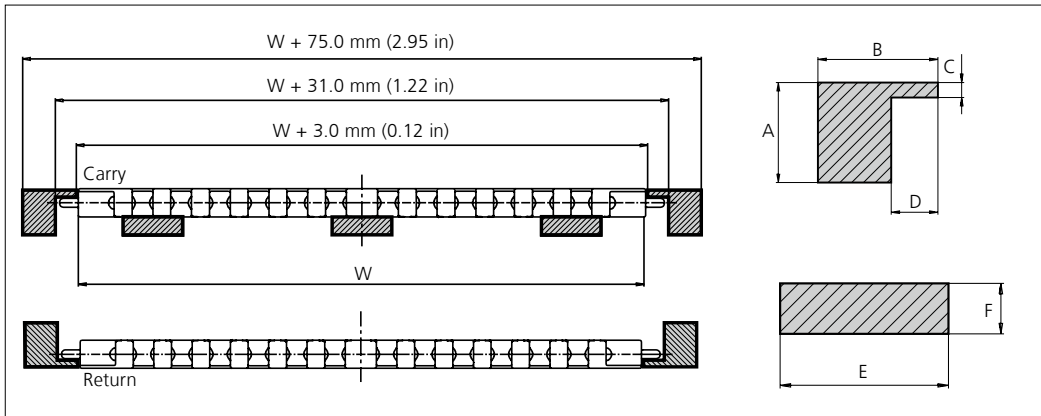
	mm	in
A	30.0	1.18
B	4.5	0.18
C	8.0	0.31
D	18.0	0.71
E	22.0	0.87
F	14.0	0.55

Slotted Wearstrip Configuration



	mm	in
A	30.0	1.18
B	36.0	1.42
C	4.5	0.18
D	14.0	0.55
E	40.0	1.57
F	12.0	0.47
G	20.0	0.79
H	5.0	0.20
I	22.5	0.89

Solid Wearstrip Configuration



	mm	in
A	30.0	1.18
B	36.0	1.42
C	4.5	0.18
D	14.0	0.55
E	40.0	1.57
F	12.0	0.47

uni Flex ONE O

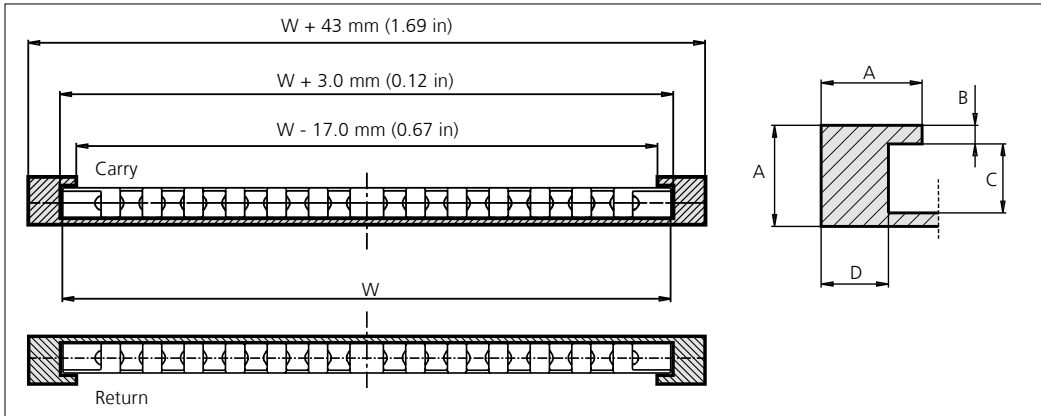
Using the uni Flex ONE with O-Tab and a slotted wearstrip, the O-Tab will allow the transported products to be wider than the belt. O-Tabs are molded into the belt to ensure cleanability and are preferred for direct food contact.

uni Flex ONE EO (Exchangeable O-Tab)

Exchangeable O-Tab system is made of heat and wear resistant material to improve performance between the belt edge and the wearstrip. Using a slotted wearstrip the exchangeable O-Tab will track the belt and allow the transported products to be wider than the belt. Resists high curve load at increased speed.

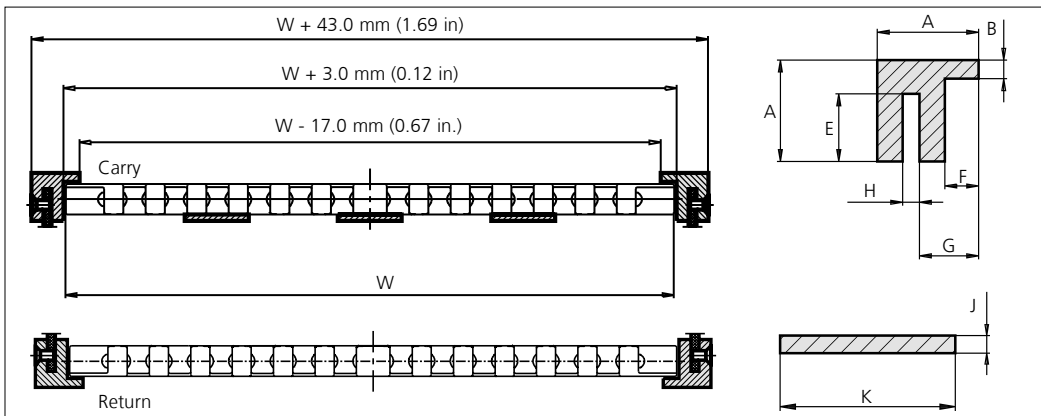
Profiles for uni Flex ONE EW/ER

Compact Profile Configuration



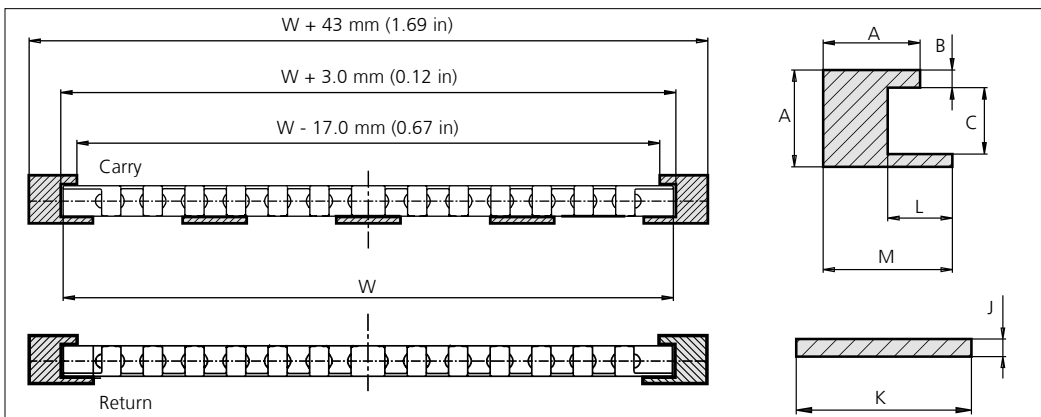
	mm	in
A	30.0	1.18
B	5.5	0.22
C	20.5	0.81
D	20.0	0.79

Slotted Wearstrip Configuration



	mm	in
A	30.0	1.18
B	5.5	0.22
E	20.0	0.79
F	10.0	0.39
G	17.5	0.69
H	5.0	0.20
J	4.0	0.16
K	40.0	1.57

Solid Wearstrip Configuration



	mm	in
A	30.0	1.18
B	5.5	0.22
C	20.5	0.81
J	4.0	0.16
K	40.0	1.57
L	20.0	0.79
M	40.0	1.57

uni Flex ONE EW (Exchangeable Wearpart)

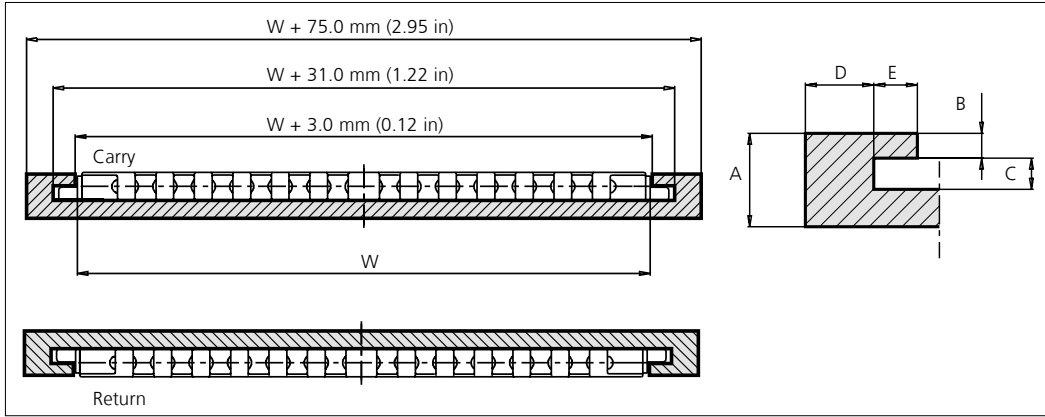
Exchangeable Wearpart system is made of heat and wear resistant material to improve performance between the belt edge and the wearstrip. This Wearpart can easily be replaced. Resists high curve load at increased speed.

uni Flex ONE ER (Exchangeable Edge Roller)

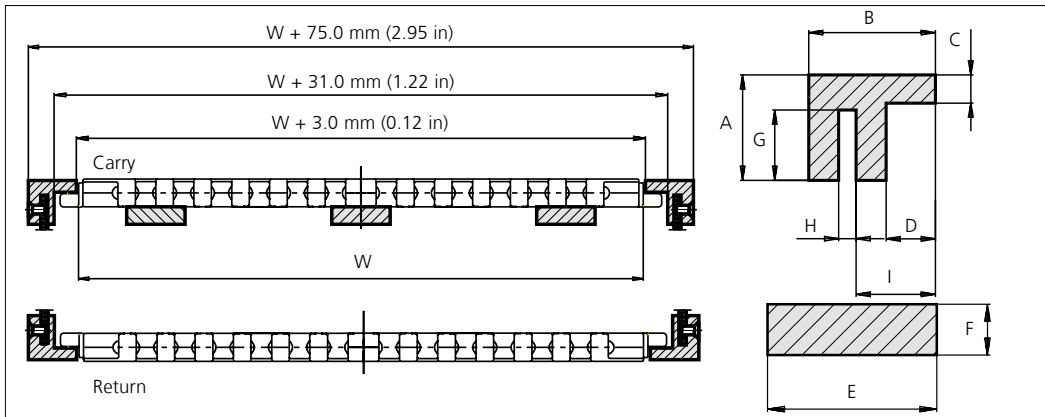
uni Flex ONE with Exchangeable Edge Rollers reduces friction in curves to a minimum making it very suitable for applications with many curves e.g. static spirals (non rotating drum) or high speed sideflexing conveyors.

Profiles for uni Flex ONE EOO

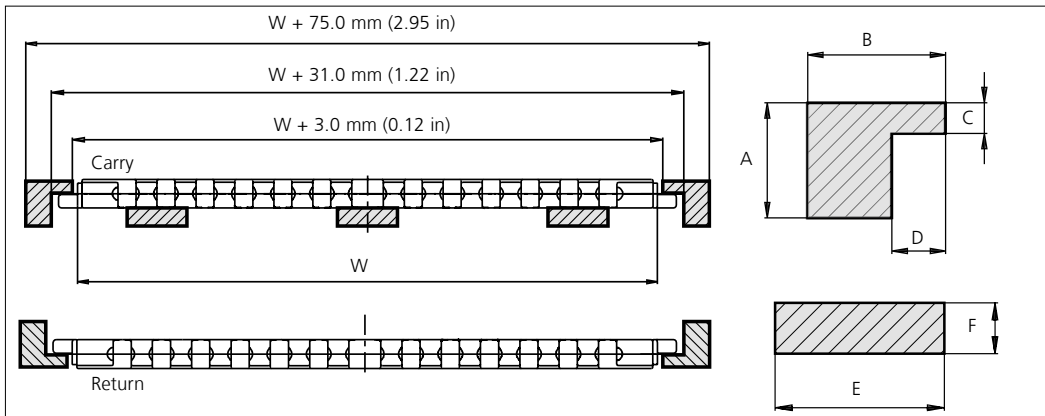
Compact Profile Configuration



Slotted Wearstrip Configuration



Solid Wearstrip Configuration

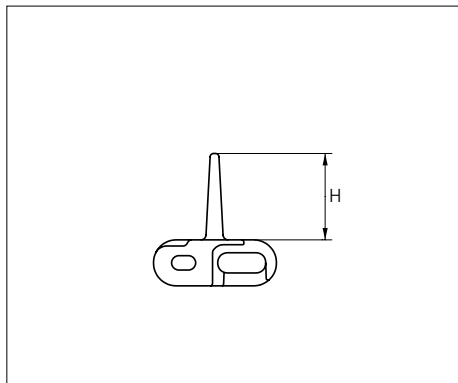
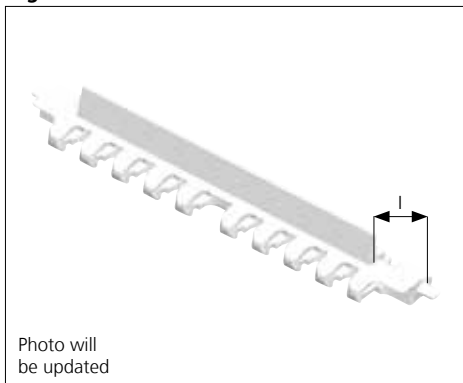


uni Flex ONE EOO (Exchangeable Offset O-Tab)

Exchangeable O-Tab system is made of heat and wear resistant material to improve performance between the belt edge and the wearstrip. Using a slotted wearstrip the exchangeable O-Tab will track the belt and allow the transported products to be wider than the belt. Resists high curve load at increased speed.

Accessories

Flight

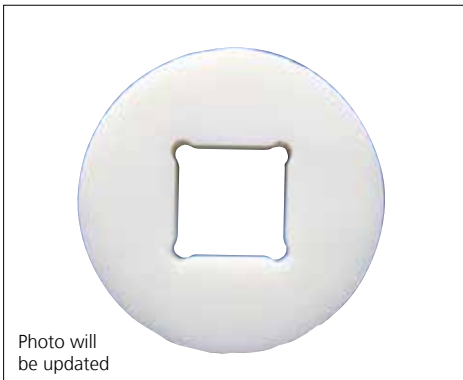


Type	Standard belt material & color	Height (H)		Indent (I)		Link size	Width	
		mm	in	mm	in		mm	in
Flight	POM-SX W B *	25.4	1.00	32.0	1.26	K1200	304.8	12.0

* Please note that uni Flex ONE in POM-SX blue is not according to the standard color quality for blue. Small variations may occur.
Non Standard material and color: See uni Material and Color Overview.

Accessories

Idler



Type	Standard material & color	No. of teeth	Diameter idler	
			mm	in
Idler	POM-D N	8	72.9	2.87
		9	85.6	3.37
		11	110.7	4.36
		12	123.1	4.85
		13	135.5	5.33
		16	172.4	6.79

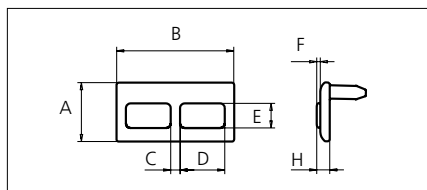
Thickness of idler: 20.0 mm (0.79 in).

Recommended for use at idler end to ensure smooth and low noise operation.

Non Standard material and color: See uni Material and Color Overview.

Accessories

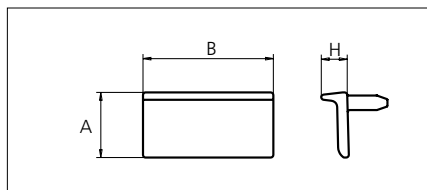
Clip On Rubber Flat



	mm	in
A	25.0	0.98
B	50.0	1.97
C	4.0	0.16
D	19.0	0.75
E	10.5	0.41
F	1.5	0.06

Accessories

Clip On Flight

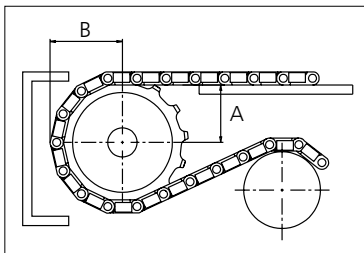
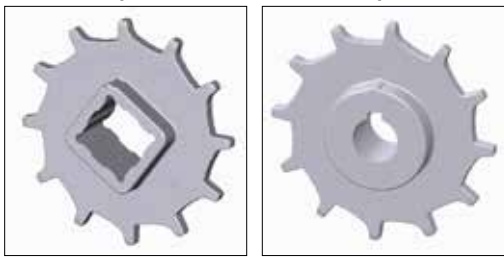


Type	Height (H)		Standard materials & colors
	mm	in	
uni Flex ONE Clip On Rubber Flat	5.5	0.22	POM-D O + Rubber 01 K
uni Flex ONE Clip On Flight	10.0	0.39	POM-D O

Sprocket

No. of teeth	Pilot Bore	Bore size											Overall diameter		Pitch diameter		Hub diameter		Dimension A		Dimension B		Single row/Two way	Double row/Two way	Machined	
		in	0.75	0.79	0.98	1.00	1.18	1.25	1.50	1.57	2.36	2.50													3.54	PAG
		mm	19.1	20.0	25.0	25.4	30.0	31.8	38.1	40.0	60.0	63.5	90.0	mm	in	mm	in	mm	in	mm	in	Molded			Machined	
Z08	x				■	●	●		●				99.9	3.93	101.0	3.98	60.0	2.36	36.5	1.44	59.0	2.32	x		x	
Z09	x					●	●		●				111.4	4.39	113.7	4.48	70.0	2.76	42.8	1.69	64.9	2.56	x		x	
Z09									■	■			111.4	4.39	113.7	4.48	74.0	2.91	42.8	1.69	64.9	2.56	x		x	
Z11	x					●	●	●					135.2	5.32	138.8	5.46	70.0	2.76	55.4	2.18	76.9	3.03	x		x	
Z11									■	■			135.2	5.32	138.8	5.46	74.0	2.91	55.4	2.18	76.9	3.03	x		x	
Z12	x					●	●	●	●				147.2	5.80	151.2	5.95	70.0	2.76	61.6	2.43	82.9	3.26	x		x	
Z12									■	■			147.2	5.80	151.2	5.95	74.0	2.91	61.6	2.43	82.9	3.26	x		x	
Z13	x					●	●	●	●				159.2	6.27	163.6	6.44	70.0	2.76	67.8	2.67	88.9	3.50	x		x	
Z13									■	■			159.2	6.27	163.6	6.44	74.0	2.91	67.8	2.67	88.9	3.50	x		x	
Z16	x					●	●	●	●				195.3	7.69	200.5	7.89	70.0	2.76	86.3	3.40	107.0	4.21	x		x	
Z16									■	■			195.3	7.69	200.5	7.89	74.0	2.91	86.3	3.40	107.0	4.21	x		x	

■ Molded sprocket ● Molded sprocket



Other sprocket sizes are available upon request
 Other bore sizes are available upon request
 uni Retainer Rings: See uni Retainer Ring data sheet
 Width of tooth = 9.0 mm (0.35 in)
 Width of sprocket = 39.0 mm (1.54 in)

Max. load per sprocket shown does not take bore size into account.
 Please also ensure that sufficient size shaft is chosen for corresponding load.

For correct sprocket position: See uni Assembly Instructions for uni Flex ONE.
 For more detailed sprocket information, contact Customer Service.

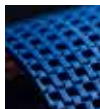
Non standard material and color: See uni Material and Color Overview.



Conveyor Belts



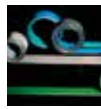
Seamless Belts



Modular Belts



Timing Belts



Transmission Belts



Fabrication & service

Expert advice, quality solutions and local service for all your belting needs www.ammeraalbeltech.com

Ammeraal Beltech Modular A/S
Hjulmagervej 21
DK-7100 Vejle

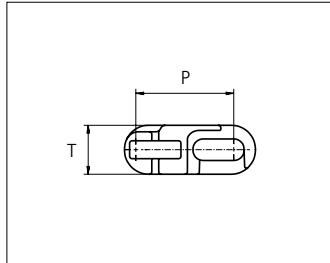
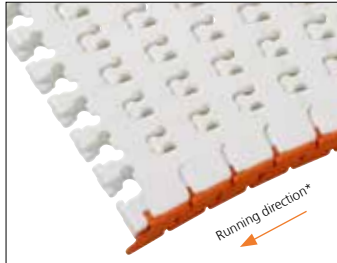
T +45 7572 3100
F +45 7572 3348
admin@unichains.com
www.unichains.com

This information is subject to alteration due to continuous development. Ammeraal Beltech will not be held liable for the incorrect use of the above stated information. This information replaces previous information. All activities performed and services rendered by Ammeraal Beltech are subject to general terms and conditions of sale and delivery, as applied by its operating companies.



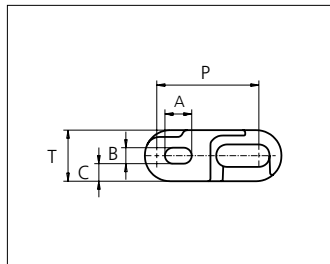
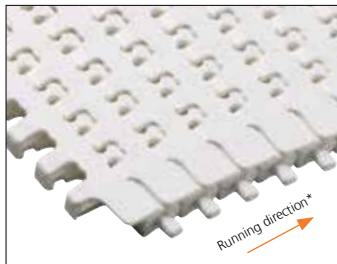
Plastic Modular Belt

Series uni Flex ONE

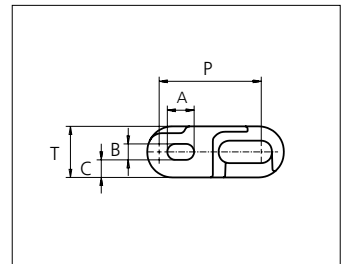
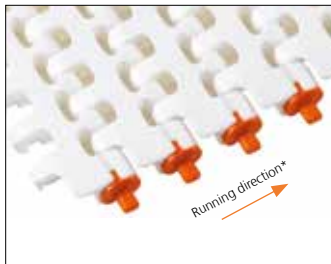


Sideflexing belt
 Nominal pitch: 38.1 mm (1.50 in)
 Surface type: Flat
 Surface opening: 15%
 Backflex radius: 50.0 mm (1.97 in)
 Min. inside radius R1.6 x belt width

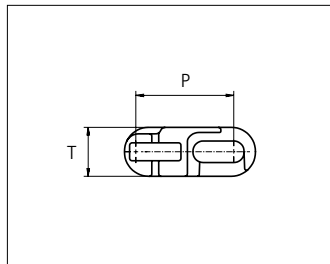
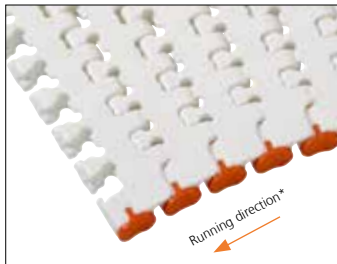
uni Flex ONE EWC R1.6
 Surface Opening: 15%



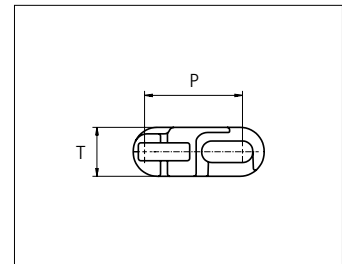
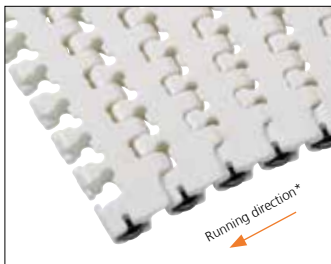
uni Flex ONE O R1.6
 Surface Opening: 15%



uni Flex ONE EO R1.6
 Surface Opening: 15%

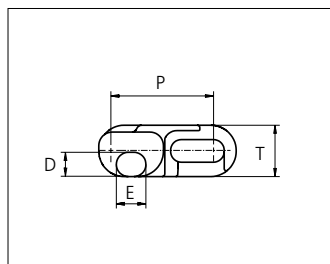
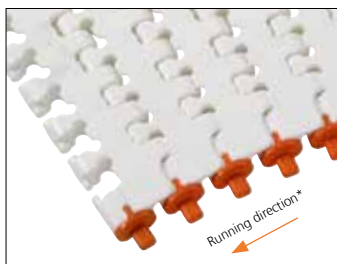


uni Flex ONE EW R1.6
 Surface Opening: 15%



uni Flex ONE ER R1.6
 Surface Opening: 15%

uni Flex ONE ER is not available for use in North America.



uni Flex ONE EOO R1.6
 Surface Opening: 15%

*uni-chains recommends this travel direction. However travel in both directions is possible.

	mm	in		mm	in
P (Nominal)	38.1	1.50	D	9.0	0.35
A	10.0	0.39	E	11.0	0.43
B	5.9	0.23	T	19.1	0.75
C	6.6	0.26	-	-	-

Belt material & color	POM-SX W B **
O-Tab, Wearpart material & color	POM DK O
EWC Wearpart material & color	K750: POM DK Y K1200, K1500, K1800: POM DK O K2400: POM DK B

**Please note that uni Flex ONE in POM-SX blue is not according to the standard color quality for blue. Small variations may occur.



STANDARD
 SIDE FLEXING
 PITCH 38.1 MM/1.50 IN

Belt width			Type	Permissible tensile force Belt/pin material				Belt weight Belt material		*Recommended No. drive sprocket per shaft	Number of wear strips (Min No.)	
				POM-SX				POM-SX			**Carry (pcs)	**Return (pcs)
Size	mm	in		Straight sections		Curve sections		kg/m	lb/ft			
			N	lbf	N	lbf						
K750	190.5	7.5	O	2400	540	2000	450	2.5	1.68	2	2	2
			EW					2.4	1.61			
			EO/EOO					2.5	1.68			
			ER					2.6	1.75			
			EWC					2.7	1.81			
K1200	304.8	12.0	O	4000	899	3400	764	4.0	2.69	4	3	2
			EW					3.9	2.62			
			EO/EOO					4.0	2.69			
			ER					4.1	2.76			
			EWC					4.2	2.82			
K1500	381.0	15.0	O	6400	1439	3500	787	4.9	3.29	6	3	2
			EW					4.9	3.29			
			EO/EOO					4.9	3.29			
			ER					5.0	3.36			
			EWC					5.1	3.43			
K1800	457.2	18.0	O	8200	1843	3600	809	6.1	4.10	6	4	2
			EW					6.1	4.10			
			EO/EOO					6.1	4.10			
			ER					6.2	4.17			
			EWC					6.2	4.17			
K2400	609.6	24.0	O	12000	2698	3800	854	7.9	5.31	6	5	3
			EW					7.8	5.24			
			EO/EOO					7.8	5.24			
			ER					7.9	5.31			
			EWC					8.1	5.44			

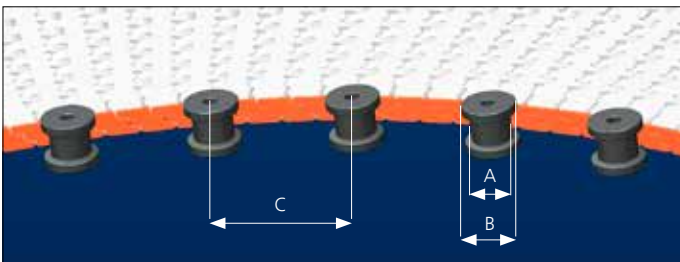
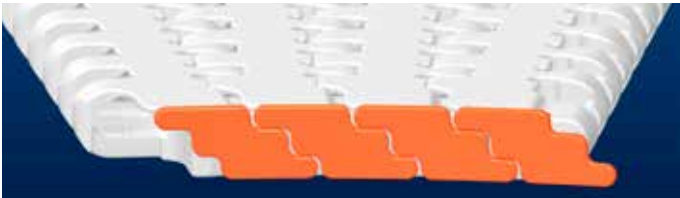
General belt tolerance is +0/-0.4% at 23°C/73°F.

*Max. Load per Drive Sprocket. Belt material: POM-SX 2500 N (562 lbf).

**Max. Spacing between wear strips, Carry: 152 mm (6 in); Return: 304 mm (12 in).

Design Guide Lines

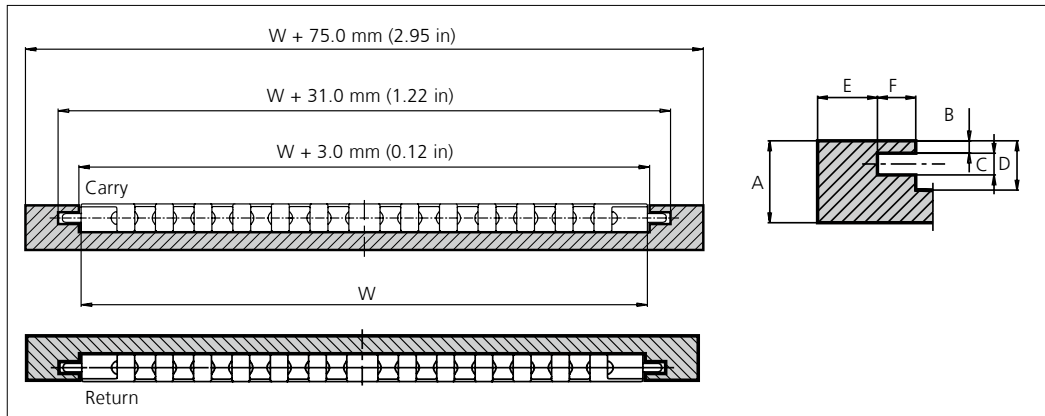
uni Flex One EWC



	mm	in
A	min \varnothing 30	min \varnothing 1¼
B	A + min 12	A + min ½
C	100-150	4-6

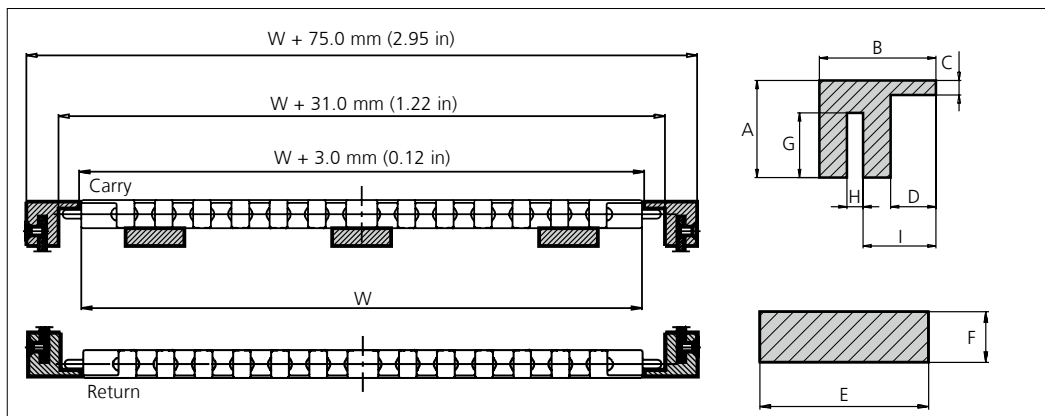
Profiles for uni Flex ONE O/EO

Compact Profile Configuration



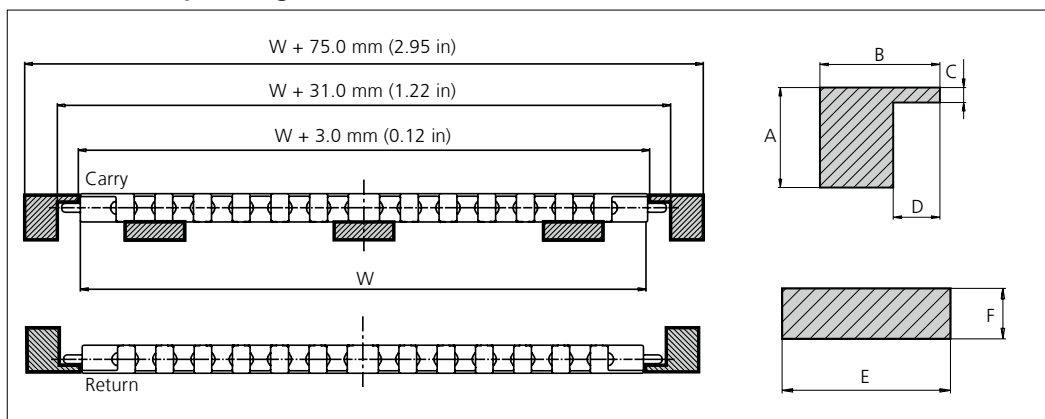
	mm	in
A	30.0	1.18
B	4.5	0.18
C	8.0	0.31
D	18.0	0.71
E	22.0	0.87
F	14.0	0.55

Slotted Wearstrip Configuration



	mm	in
A	30.0	1.18
B	36.0	1.42
C	4.5	0.18
D	14.0	0.55
E	40.0	1.57
F	12.0	0.47
G	20.0	0.79
H	5.0	0.20
I	22.5	0.89

Solid Wearstrip Configuration



	mm	in
A	30.0	1.18
B	36.0	1.42
C	4.5	0.18
D	14.0	0.55
E	40.0	1.57
F	12.0	0.47

uni Flex ONE O

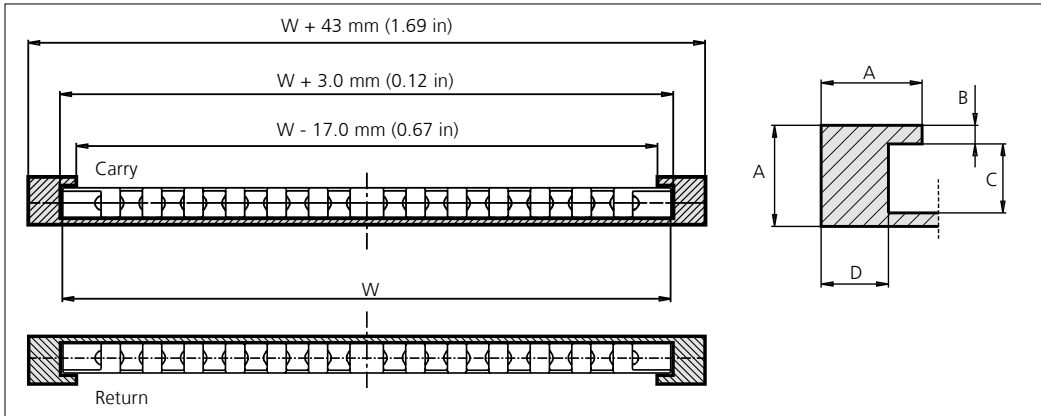
Using the uni Flex ONE with O-Tab and a slotted wearstrip, the O-Tab will allow the transported products to be wider than the belt. O-Tabs are molded into the belt to ensure cleanability and are preferred for direct food contact.

uni Flex ONE EO (Exchangeable O-Tab)

Exchangeable O-Tab system is made of heat and wear resistant material to improve performance between the belt edge and the wearstrip. Using a slotted wearstrip the exchangeable O-Tab will track the belt and allow the transported products to be wider than the belt. Resists high curve load at increased speed.

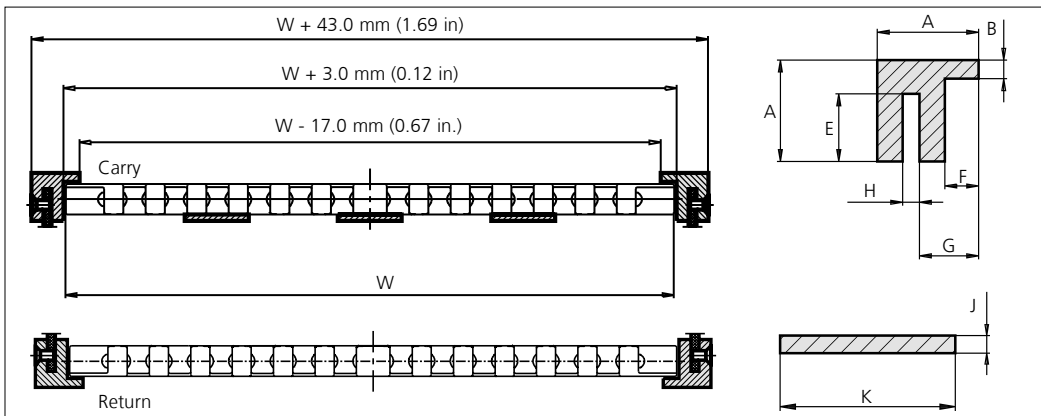
Profiles for uni Flex ONE EW/ER

Compact Profile Configuration



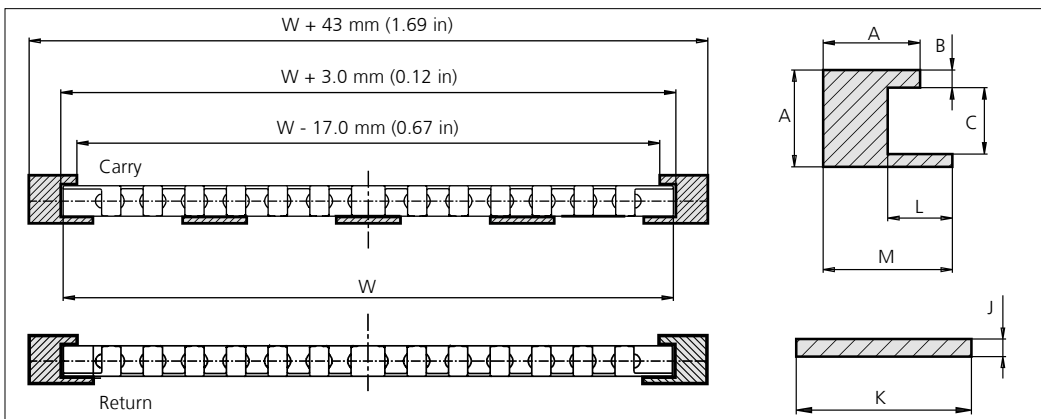
	mm	in
A	30.0	1.18
B	5.5	0.22
C	20.5	0.81
D	20.0	0.79

Slotted Wearstrip Configuration



	mm	in
A	30.0	1.18
B	5.5	0.22
E	20.0	0.79
F	10.0	0.39
G	17.5	0.69
H	5.0	0.20
J	4.0	0.16
K	40.0	1.57

Solid Wearstrip Configuration



	mm	in
A	30.0	1.18
B	5.5	0.22
C	20.5	0.81
J	4.0	0.16
K	40.0	1.57
L	20.0	0.79
M	40.0	1.57

uni Flex ONE EW (Exchangeable Wearpart)

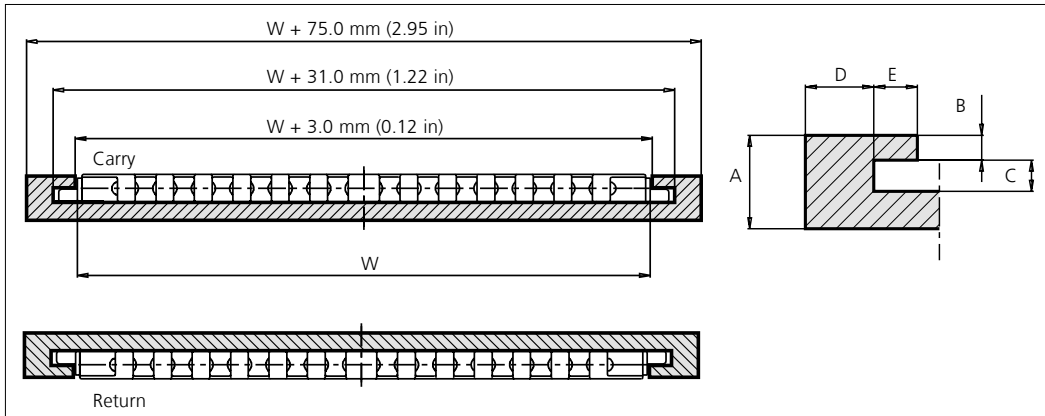
Exchangeable Wearpart system is made of heat and wear resistant material to improve performance between the belt edge and the wearstrip. This Wearpart can easily be replaced. Resists high curve load at increased speed.

uni Flex ONE ER (Exchangeable Edge Roller)

uni Flex ONE with Exchangeable Edge Rollers reduces friction in curves to a minimum making it very suitable for applications with many curves e.g. static spirals (non rotating drum) or high speed sideflexing conveyors.

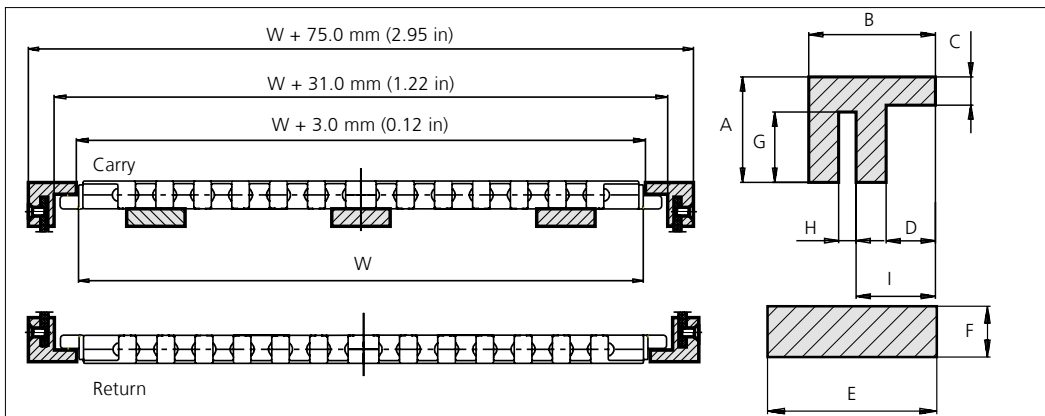
Profiles for uni Flex ONE EOO

Compact Profile Configuration



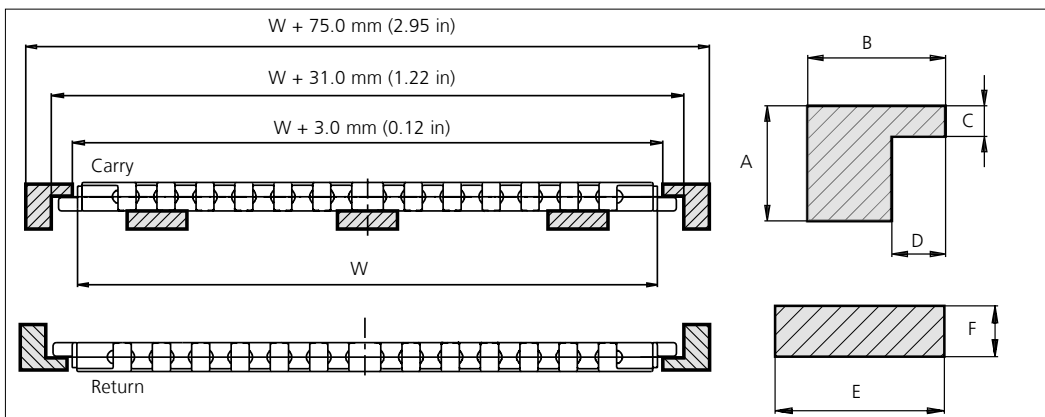
	mm	in
A	30.0	1.18
B	8.0	0.31
C	10.0	0.39
D	22.0	0.87
E	14.0	0.55

Slotted Wearstrip Configuration



	mm	in
A	30.0	1.18
B	36.0	1.42
C	8.0	0.31
D	14.0	0.55
E	40.0	1.57
F	12.0	0.47
G	20.0	0.79
H	5.0	0.20
I	22.5	0.89

Solid Wearstrip Configuration



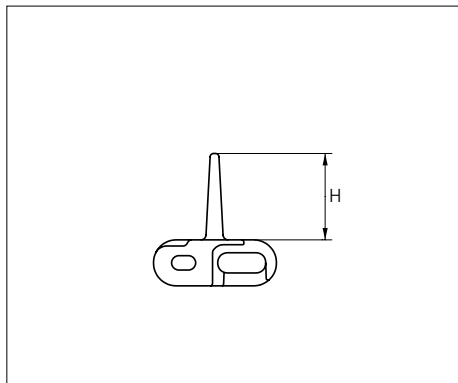
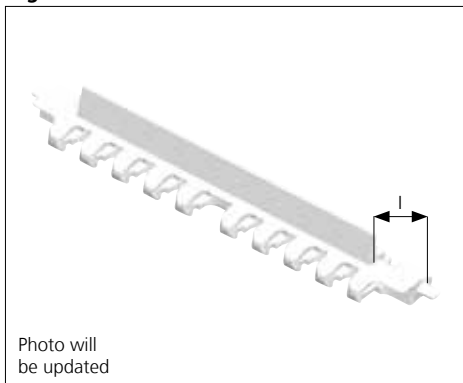
	mm	in
A	30.0	1.18
B	36.0	1.42
C	8.0	0.31
D	14.0	0.55
E	40.0	1.57
F	12.0	0.47

uni Flex ONE EOO (Exchangeable Offset O-Tab)

Exchangeable O-Tab system is made of heat and wear resistant material to improve performance between the belt edge and the wearstrip. Using a slotted wearstrip the exchangeable O-Tab will track the belt and allow the transported products to be wider than the belt. Resists high curve load at increased speed.

Accessories

Flight

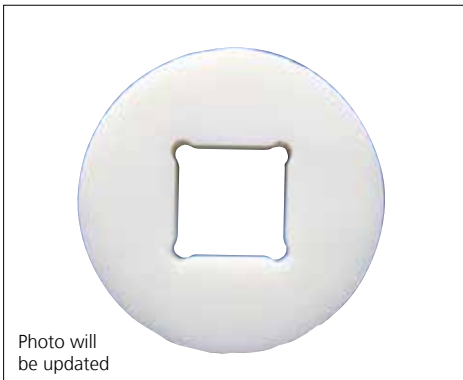


Type	Standard belt material & color	Height (H)		Indent (I)		Link size	Width	
		mm	in	mm	in		mm	in
Flight	POM-SX W B *	25.4	1.00	32.0	1.26	K1200	304.8	12.0

* Please note that uni Flex ONE in POM-SX blue is not according to the standard color quality for blue. Small variations may occur.
Non Standard material and color: See uni Material and Color Overview.

Accessories

Idler

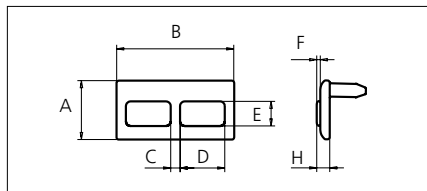
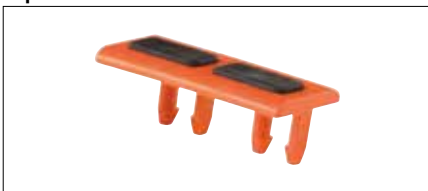


Type	Standard material & color	No. of teeth	Diameter idler	
			mm	in
Idler	POM-D N	8	72.9	2.87
		9	85.6	3.37
		11	110.7	4.36
		12	123.1	4.85
		13	135.5	5.33
		16	172.4	6.79

Thickness of idler: 20.0 mm (0.79 in).
Recommended for use at idler end to ensure smooth and low noise operation.
Non Standard material and color: See uni Material and Color Overview.

Accessories

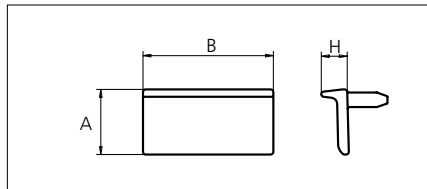
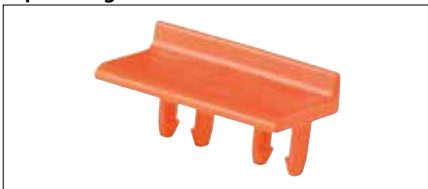
Clip On Rubber Flat



	mm	in
A	25.0	0.98
B	50.0	1.97
C	4.0	0.16
D	19.0	0.75
E	10.5	0.41
F	1.5	0.06

Accessories

Clip On Flight



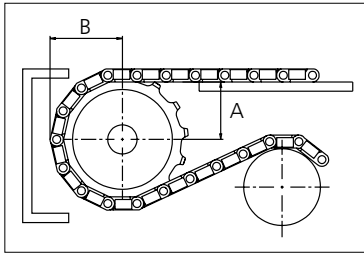
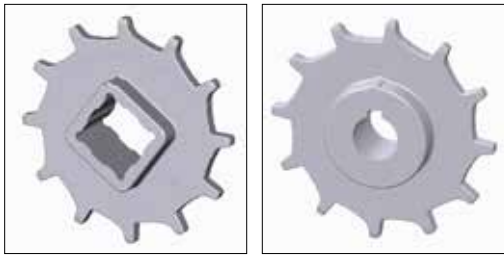
Type	Height (H)		Standard materials & colors
	mm	in	
uni Flex ONE Clip On Rubber Flat	5.5	0.22	POM-D O + Rubber 01 K
uni Flex ONE Clip On Flight	10.0	0.39	POM-D O

Sprocket

No. of teeth	Pilot Bore	Bore size											Overall diameter		Pitch diameter		Hub diameter		Dimension A		Dimension B		Single row/Two way	Double row/Two way	Molded PAG LG	Machined PAG N
		in	0.75	0.79	0.98	1.00	1.18	1.25	1.50	1.57	2.36	2.50														
		mm	19.1	20.0	25.0	25.4	30.0	31.8	38.1	40.0	60.0	63.5	90.0	mm	in	mm	in	mm	in	mm	in					
Z08	x				■	●	●		●				99.9	3.93	101.0	3.98	60.0	2.36	36.5	1.44	59.0	2.32	x		x	
Z09	x					●	●	●		●			111.4	4.39	113.7	4.48	70.0	2.76	42.8	1.69	64.9	2.56	x		x	
Z09									■	■			111.4	4.39	113.7	4.48	74.0	2.91	42.8	1.69	64.9	2.56	x		x	
Z11	x					●	●	●					135.2	5.32	138.8	5.46	70.0	2.76	55.4	2.18	76.9	3.03	x		x	
Z11									■	■			135.2	5.32	138.8	5.46	74.0	2.91	55.4	2.18	76.9	3.03	x		x	
Z12	x					●	●	●	●				147.2	5.80	151.2	5.95	70.0	2.76	61.6	2.43	82.9	3.26	x		x	
Z12									■	■			147.2	5.80	151.2	5.95	74.0	2.91	61.6	2.43	82.9	3.26	x		x	
Z13	x					●	●	●	●				159.2	6.27	163.6	6.44	70.0	2.76	67.8	2.67	88.9	3.50	x		x	
Z13									■	■			159.2	6.27	163.6	6.44	74.0	2.91	67.8	2.67	88.9	3.50	x		x	
Z16	x					●	●	●	●				195.3	7.69	200.5	7.89	70.0	2.76	86.3	3.40	107.0	4.21	x		x	
Z16									■	■			195.3	7.69	200.5	7.89	74.0	2.91	86.3	3.40	107.0	4.21	x		x	

■ Molded sprocket

● Molded sprocket



Other sprocket sizes are available upon request
 Other bore sizes are available upon request
 uni Retainer Rings: See uni Retainer Ring data sheet
 Width of tooth = 9.0 mm (0.35 in)
 Width of sprocket = 39.0 mm (1.54 in)

Max. load per sprocket shown does not take bore size into account.
 Please also ensure that sufficient size shaft is chosen for corresponding load.

For correct sprocket position: See uni Assembly Instructions for uni Flex ONE.
 For more detailed sprocket information, contact Customer Service.

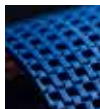
Non standard material and color: See uni Material and Color Overview.



Conveyor Belts



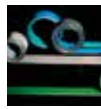
Seamless Belts



Modular Belts



Timing Belts



Transmission Belts



Fabrication & service

Expert advice, quality solutions and local service for all your belting needs www.ammeraalbeltech.com

Ammeraal Beltech Modular A/S
Hjulgagervej 21
DK-7100 Vejle

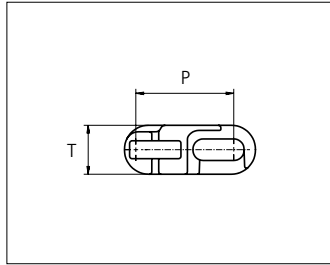
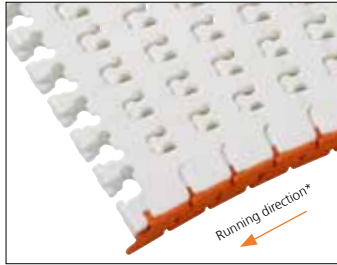
T +45 7572 3100
F +45 7572 3348
admin@unichains.com
www.unichains.com

This information is subject to alteration due to continuous development. Ammeraal Beltech will not be held liable for the incorrect use of the above stated information. This information replaces previous information. All activities performed and services rendered by Ammeraal Beltech are subject to general terms and conditions of sale and delivery, as applied by its operating companies.



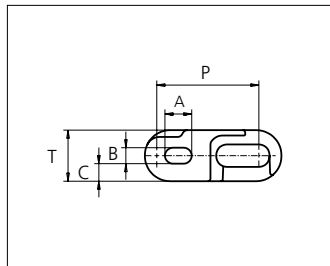
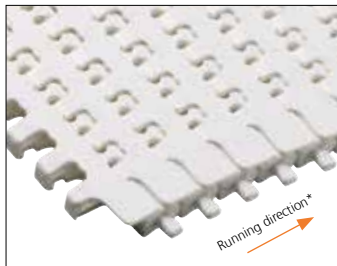
Plastic Modular Belt

Series uni Flex ONE

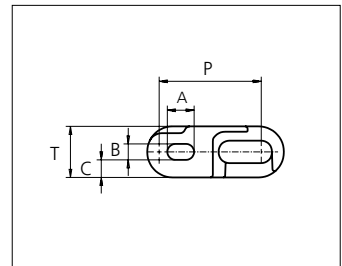
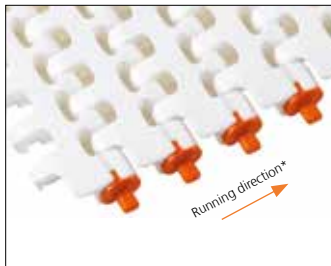


Sideflexing belt
 Nominal pitch: 38.1 mm (1.50 in)
 Surface type: Flat
 Surface opening: 15%
 Backflex radius: 50.0 mm (1.97 in)
 Min. inside radius R1.6 x belt width

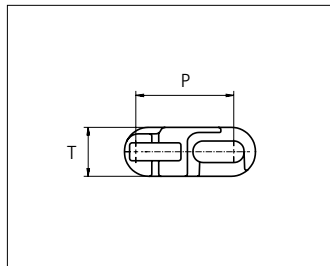
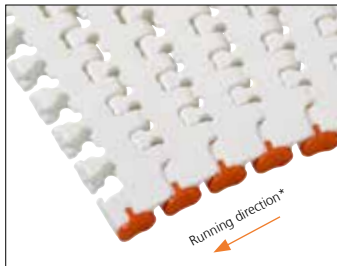
uni Flex ONE EWC R1.6
 Surface Opening: 15%



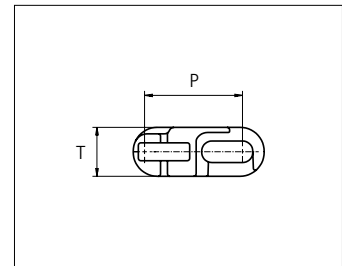
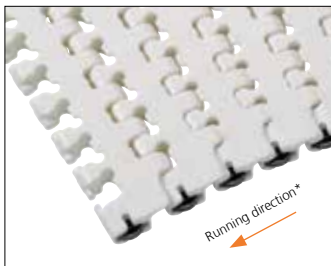
uni Flex ONE O R1.6
 Surface Opening: 15%



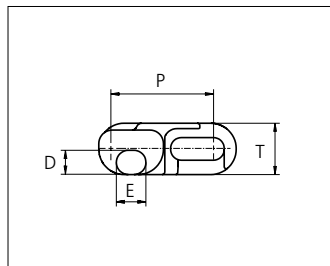
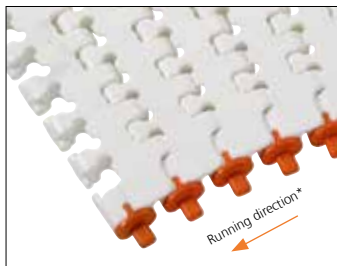
uni Flex ONE EO R1.6
 Surface Opening: 15%



uni Flex ONE EW R1.6
 Surface Opening: 15%



uni Flex ONE ER R1.6
 Surface Opening: 15%
 uni Flex ONE ER is not available for use in North America.



uni Flex ONE EOO R1.6
 Surface Opening: 15%

*uni-chains recommends this travel direction. However travel in both directions is possible.

	mm	in		mm	in
P (Nominal)	38.1	1.50	D	9.0	0.35
A	10.0	0.39	E	11.0	0.43
B	5.9	0.23	T	19.1	0.75
C	6.6	0.26	-	-	-

Belt material & color	POM-SX W B **
O-Tab, Wearpart material & color	POM DK O
EWC Wearpart material & color	K750: POM DK Y K1200, K1500, K1800: POM DK O K2400: POM DK B

**Please note that uni Flex ONE in POM-SX blue is not according to the standard color quality for blue. Small variations may occur.



STANDARD

SIDE FLEXING

PITCH 38.1 MM/1.50 IN

Belt width			Type	Permissible tensile force Belt/pin material				Belt weight Belt material		*Recommended No. drive sprocket per shaft	Number of wear strips (Min No.)	
				POM-SX				POM-SX			**Carry (pcs)	**Return (pcs)
Size	mm	in		Straight sections		Curve sections		kg/m	lb/ft			
			N	lbf	N	lbf						
K750	190.5	7.5	O	2400	540	2000	450	2.5	1.68	2	2	2
			EW					2.4	1.61			
			EO/EOO					2.5	1.68			
			ER					2.6	1.75			
			EWC					2.7	1.81			
K1200	304.8	12.0	O	4000	899	3400	764	4.0	2.69	4	3	2
			EW					3.9	2.62			
			EO/EOO					4.0	2.69			
			ER					4.1	2.76			
			EWC					4.2	2.82			
K1500	381.0	15.0	O	6400	1439	3500	787	4.9	3.29	6	3	2
			EW					4.9	3.29			
			EO/EOO					4.9	3.29			
			ER					5.0	3.36			
			EWC					5.1	3.43			
K1800	457.2	18.0	O	8200	1843	3600	809	6.1	4.10	6	4	2
			EW					6.1	4.10			
			EO/EOO					6.1	4.10			
			ER					6.2	4.17			
			EWC					6.2	4.17			
K2400	609.6	24.0	O	12000	2698	3800	854	7.9	5.31	6	5	3
			EW					7.8	5.24			
			EO/EOO					7.8	5.24			
			ER					7.9	5.31			
			EWC					8.1	5.44			

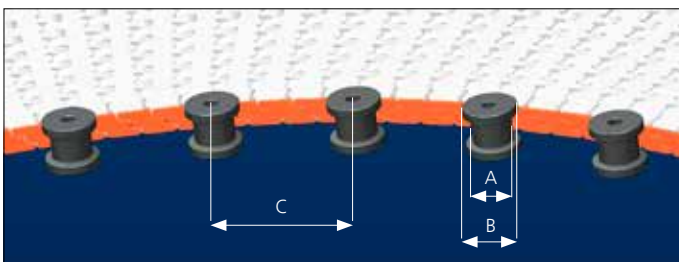
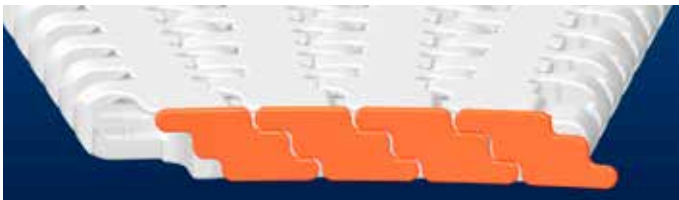
General belt tolerance is +0/-0.4% at 23°C/73°F.

*Max. Load per Drive Sprocket. Belt material: POM-SX 2500 N (562 lbf).

**Max. Spacing between wear strips, Carry: 152 mm (6 in); Return: 304 mm (12 in).

Design Guide Lines

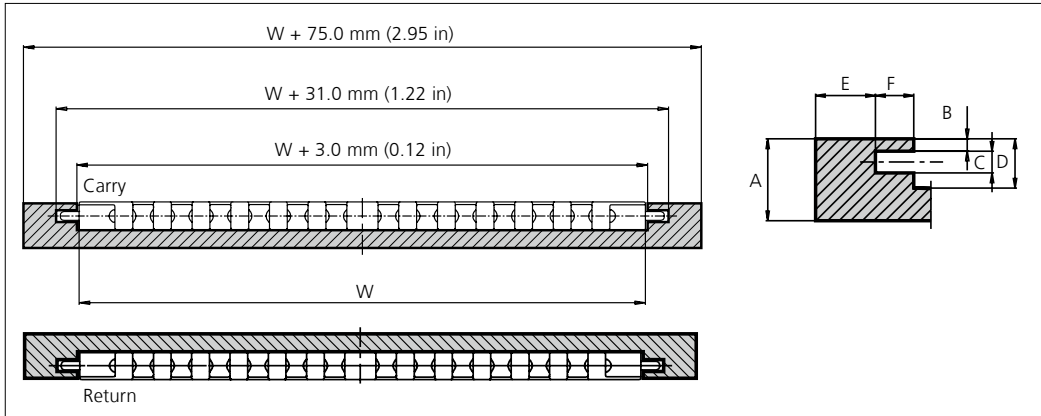
uni Flex One EWC



	mm	in
A	min \varnothing 30	min \varnothing 1¼
B	A + min 12	A + min ½
C	100-150	4-6

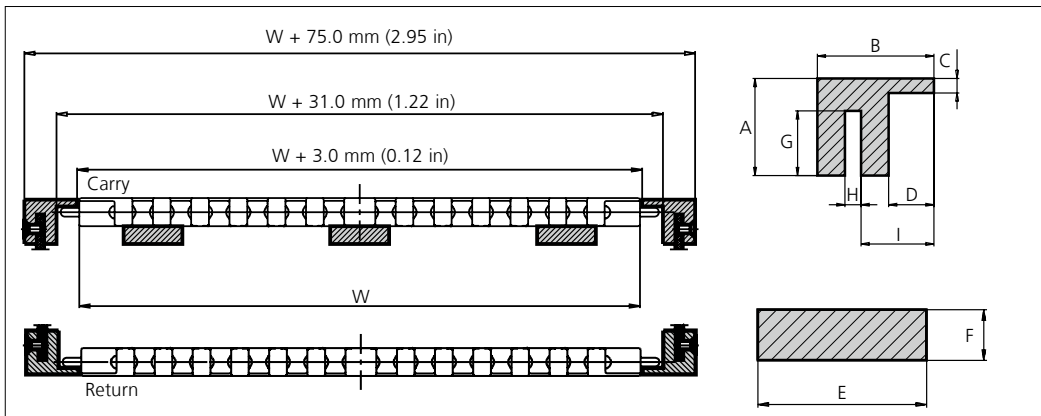
Profiles for uni Flex ONE O/EO

Compact Profile Configuration



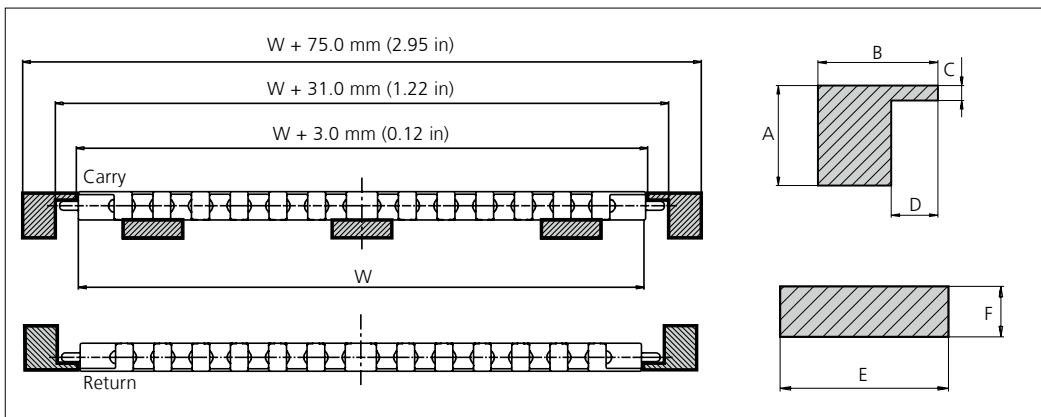
	mm	in
A	30.0	1.18
B	4.5	0.18
C	8.0	0.31
D	18.0	0.71
E	22.0	0.87
F	14.0	0.55

Slotted Wearstrip Configuration



	mm	in
A	30.0	1.18
B	36.0	1.42
C	4.5	0.18
D	14.0	0.55
E	40.0	1.57
F	12.0	0.47
G	20.0	0.79
H	5.0	0.20
I	22.5	0.89

Solid Wearstrip Configuration



	mm	in
A	30.0	1.18
B	36.0	1.42
C	4.5	0.18
D	14.0	0.55
E	40.0	1.57
F	12.0	0.47

uni Flex ONE O

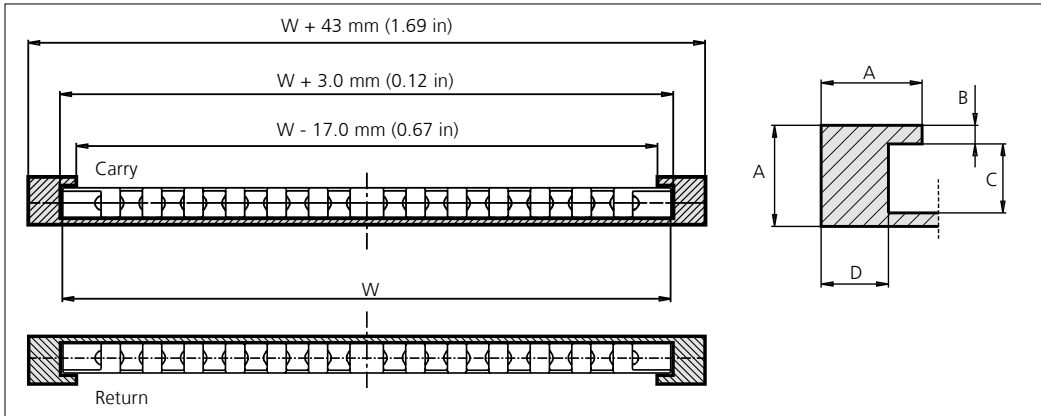
Using the uni Flex ONE with O-Tab and a slotted wearstrip, the O-Tab will allow the transported products to be wider than the belt. O-Tabs are molded into the belt to ensure cleanability and are preferred for direct food contact.

uni Flex ONE EO (Exchangeable O-Tab)

Exchangeable O-Tab system is made of heat and wear resistant material to improve performance between the belt edge and the wearstrip. Using a slotted wearstrip the exchangeable O-Tab will track the belt and allow the transported products to be wider than the belt. Resists high curve load at increased speed.

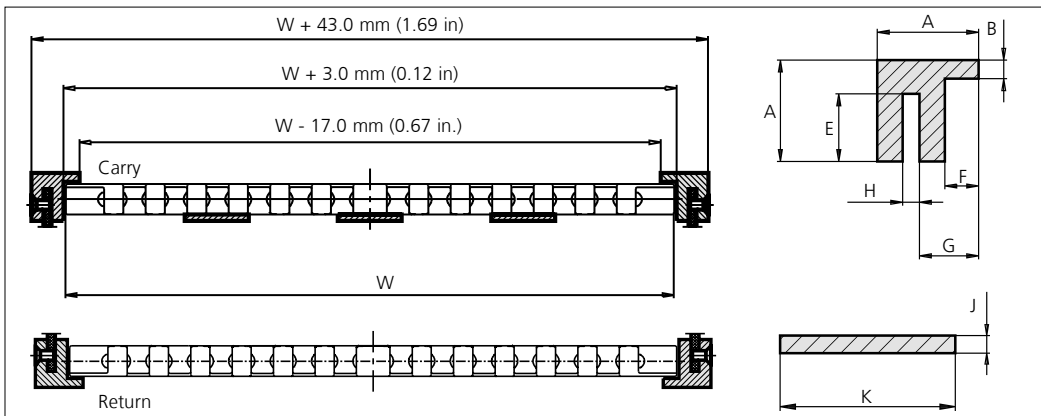
Profiles for uni Flex ONE EW/ER

Compact Profile Configuration



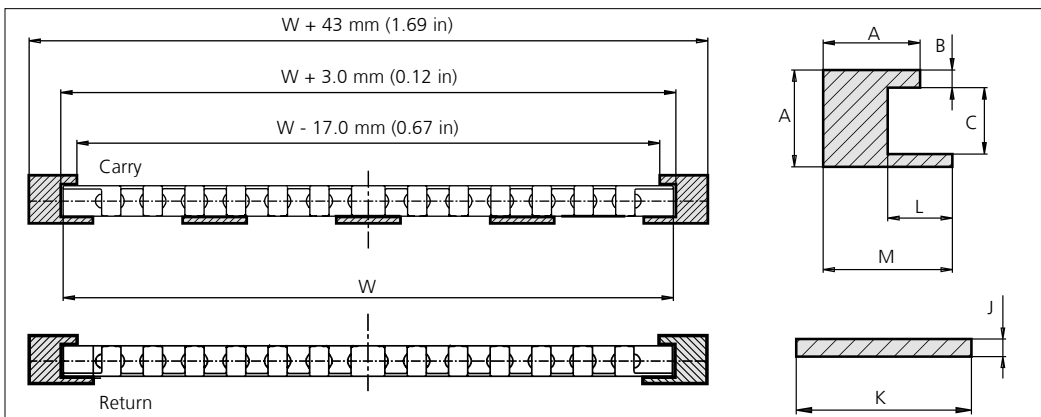
	mm	in
A	30.0	1.18
B	5.5	0.22
C	20.5	0.81
D	20.0	0.79

Slotted Wearstrip Configuration



	mm	in
A	30.0	1.18
B	5.5	0.22
E	20.0	0.79
F	10.0	0.39
G	17.5	0.69
H	5.0	0.20
J	4.0	0.16
K	40.0	1.57

Solid Wearstrip Configuration



	mm	in
A	30.0	1.18
B	5.5	0.22
C	20.5	0.81
J	4.0	0.16
K	40.0	1.57
L	20.0	0.79
M	40.0	1.57

uni Flex ONE EW (Exchangeable Wearpart)

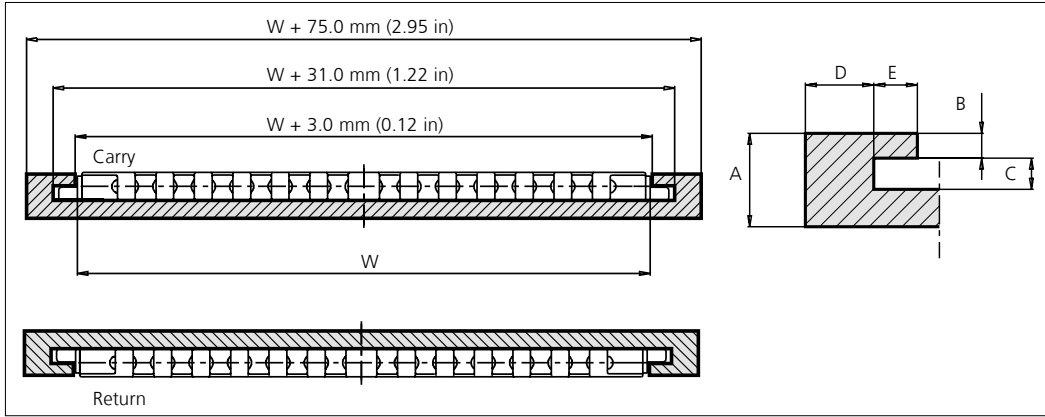
Exchangeable Wearpart system is made of heat and wear resistant material to improve performance between the belt edge and the wearstrip. This Wearpart can easily be replaced. Resists high curve load at increased speed.

uni Flex ONE ER (Exchangeable Edge Roller)

uni Flex ONE with Exchangeable Edge Rollers reduces friction in curves to a minimum making it very suitable for applications with many curves e.g. static spirals (non rotating drum) or high speed sideflexing conveyors.

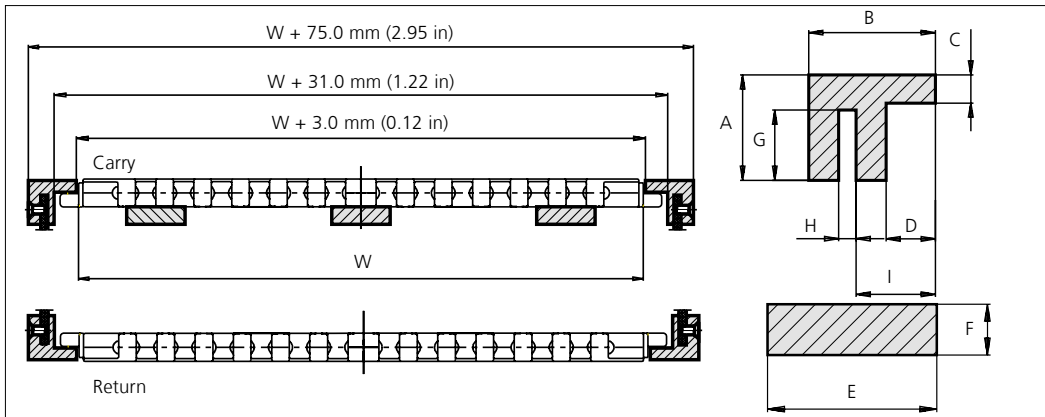
Profiles for uni Flex ONE EOO

Compact Profile Configuration



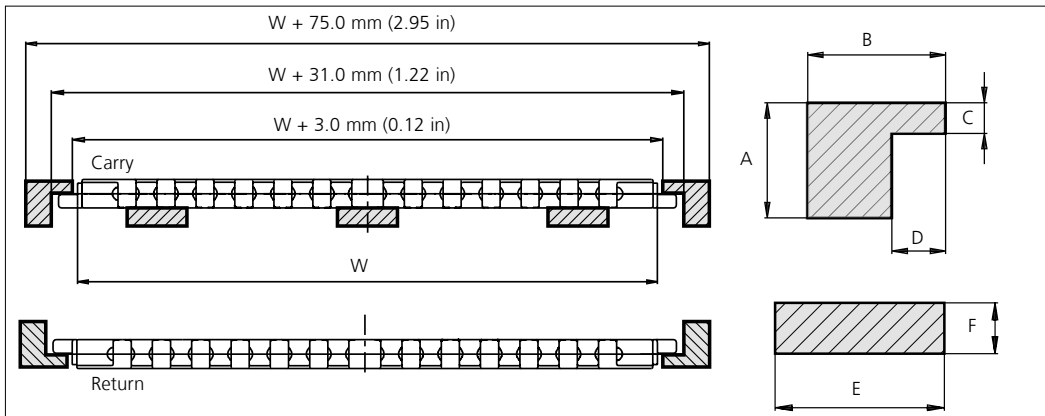
	mm	in
A	30.0	1.18
B	8.0	0.31
C	10.0	0.39
D	22.0	0.87
E	14.0	0.55

Slotted Wearstrip Configuration



	mm	in
A	30.0	1.18
B	36.0	1.42
C	8.0	0.31
D	14.0	0.55
E	40.0	1.57
F	12.0	0.47
G	20.0	0.79
H	5.0	0.20
I	22.5	0.89

Solid Wearstrip Configuration



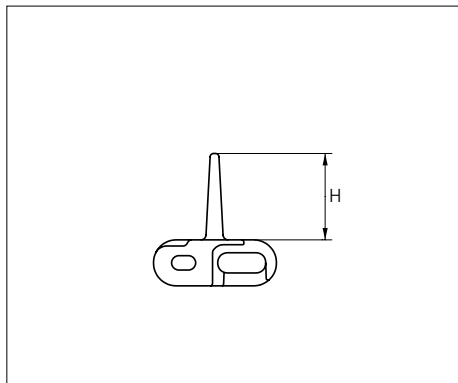
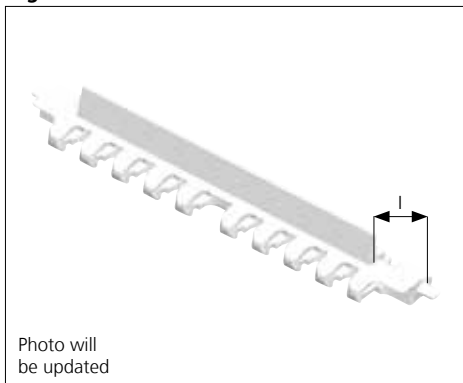
	mm	in
A	30.0	1.18
B	36.0	1.42
C	8.0	0.31
D	14.0	0.55
E	40.0	1.57
F	12.0	0.47

uni Flex ONE EOO (Exchangeable Offset O-Tab)

Exchangeable O-Tab system is made of heat and wear resistant material to improve performance between the belt edge and the wearstrip. Using a slotted wearstrip the exchangeable O-Tab will track the belt and allow the transported products to be wider than the belt. Resists high curve load at increased speed.

Accessories

Flight

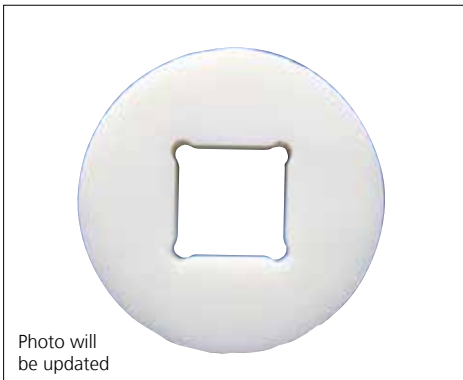


Type	Standard belt material & color	Height (H)		Indent (I)		Link size	Width	
		mm	in	mm	in		mm	in
Flight	POM-SX W B *	25.4	1.00	32.0	1.26	K1200	304.8	12.0

* Please note that uni Flex ONE in POM-SX blue is not according to the standard color quality for blue. Small variations may occur.
Non Standard material and color: See uni Material and Color Overview.

Accessories

Idler

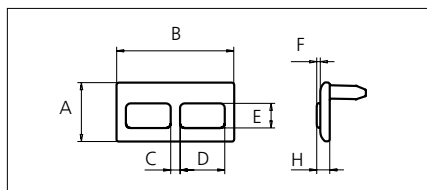


Type	Standard material & color	No. of teeth	Diameter idler	
			mm	in
Idler	POM-D N	8	72.9	2.87
		9	85.6	3.37
		11	110.7	4.36
		12	123.1	4.85
		13	135.5	5.33
		16	172.4	6.79

Thickness of idler: 20.0 mm (0.79 in).
Recommended for use at idler end to ensure smooth and low noise operation.
Non Standard material and color: See uni Material and Color Overview.

Accessories

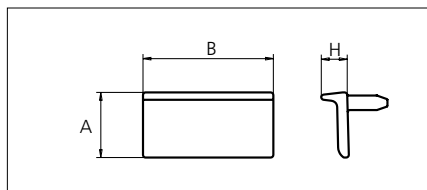
Clip On Rubber Flat



	mm	in
A	25.0	0.98
B	50.0	1.97
C	4.0	0.16
D	19.0	0.75
E	10.5	0.41
F	1.5	0.06

Accessories

Clip On Flight

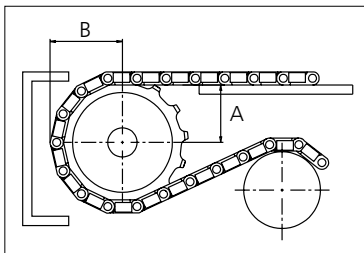


Type	Height (H)		Standard materials & colors
	mm	in	
uni Flex ONE Clip On Rubber Flat	5.5	0.22	POM-D O + Rubber 01 K
uni Flex ONE Clip On Flight	10.0	0.39	POM-D O

Sprocket

No. of teeth	Bore size													Overall diameter		Pitch diameter		Hub diameter		Dimension A		Dimension B		Single row/Two way	Double row/Two way	Material	
	Pilot Bore	in	0.75	0.79	0.98	1.00	1.18	1.25	1.50	1.57	2.36	2.50	3.54													mm	in
														mm	19.1	20.0	25.0	25.4	30.0	31.8	38.1	40.0	60.0				
Z08	x				■	●	●		●					99.9	3.93	101.0	3.98	60.0	2.36	36.5	1.44	59.0	2.32	x		x	
Z09	x					●	●		●					111.4	4.39	113.7	4.48	70.0	2.76	42.8	1.69	64.9	2.56	x		x	
Z09									■	■				111.4	4.39	113.7	4.48	74.0	2.91	42.8	1.69	64.9	2.56	x		x	
Z11	x					●	●	●						135.2	5.32	138.8	5.46	70.0	2.76	55.4	2.18	76.9	3.03	x		x	
Z11									■	■				135.2	5.32	138.8	5.46	74.0	2.91	55.4	2.18	76.9	3.03	x		x	
Z12	x					●	●	●	●					147.2	5.80	151.2	5.95	70.0	2.76	61.6	2.43	82.9	3.26	x		x	
Z12									■	■				147.2	5.80	151.2	5.95	74.0	2.91	61.6	2.43	82.9	3.26	x		x	
Z13	x					●	●	●	●					159.2	6.27	163.6	6.44	70.0	2.76	67.8	2.67	88.9	3.50	x		x	
Z13									■	■				159.2	6.27	163.6	6.44	74.0	2.91	67.8	2.67	88.9	3.50	x		x	
Z16	x					●	●	●	●					195.3	7.69	200.5	7.89	70.0	2.76	86.3	3.40	107.0	4.21	x		x	
Z16									■	■				195.3	7.69	200.5	7.89	74.0	2.91	86.3	3.40	107.0	4.21	x		x	

■ Molded sprocket ● Molded sprocket



Other sprocket sizes are available upon request
 Other bore sizes are available upon request
 uni Retainer Rings: See uni Retainer Ring data sheet
 Width of tooth = 9.0 mm (0.35 in)
 Width of sprocket = 39.0 mm (1.54 in)

Max. load per sprocket shown does not take bore size into account.
 Please also ensure that sufficient size shaft is chosen for corresponding load.

For correct sprocket position: See uni Assembly Instructions for uni Flex ONE.
 For more detailed sprocket information, contact Customer Service.

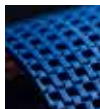
Non standard material and color: See uni Material and Color Overview.



Conveyor Belts



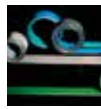
Seamless Belts



Modular Belts



Timing Belts



Transmission Belts



Fabrication & service

Expert advice, quality solutions and local service for all your belting needs www.ammeraalbeltech.com

Ammeraal Beltech Modular A/S
Hjulmagervej 21
DK-7100 Vejle

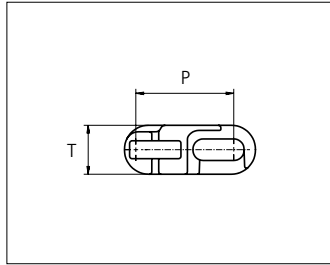
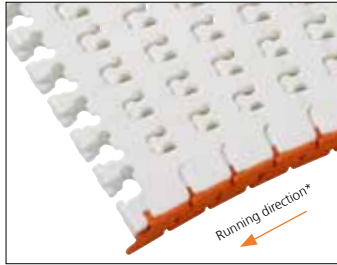
T +45 7572 3100
F +45 7572 3348
admin@unichains.com
www.unichains.com

This information is subject to alteration due to continuous development. Ammeraal Beltech will not be held liable for the incorrect use of the above stated information. This information replaces previous information. All activities performed and services rendered by Ammeraal Beltech are subject to general terms and conditions of sale and delivery, as applied by its operating companies.



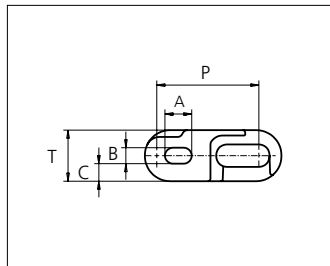
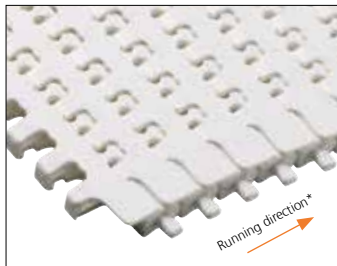
Plastic Modular Belt

Series uni Flex ONE

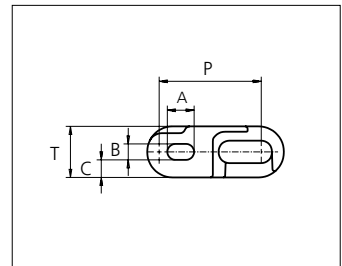
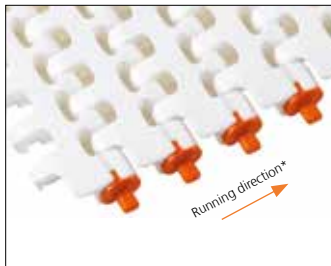


Sideflexing belt
 Nominal pitch: 38.1 mm (1.50 in)
 Surface type: Flat
 Surface opening: 15%
 Backflex radius: 50.0 mm (1.97 in)
 Min. inside radius R1.6 x belt width

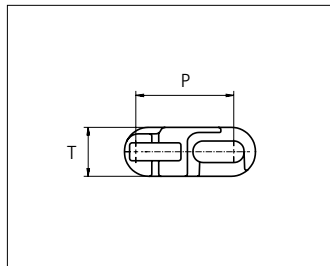
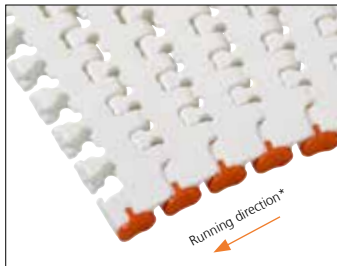
uni Flex ONE EWC R1.6
 Surface Opening: 15%



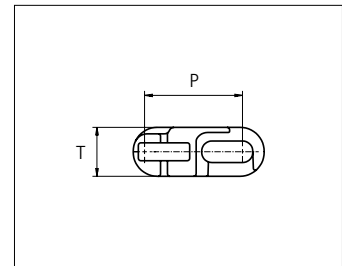
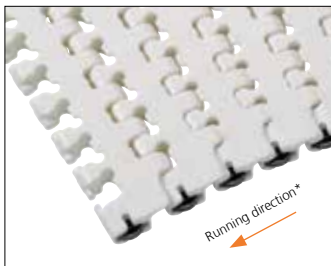
uni Flex ONE O R1.6
 Surface Opening: 15%



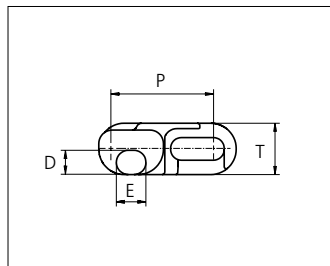
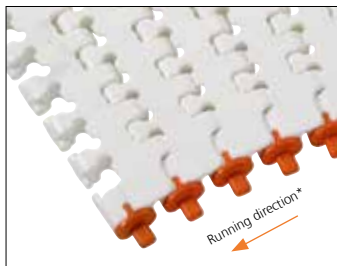
uni Flex ONE EO R1.6
 Surface Opening: 15%



uni Flex ONE EW R1.6
 Surface Opening: 15%



uni Flex ONE ER R1.6
 Surface Opening: 15%
 uni Flex ONE ER is not available for use in North America.



uni Flex ONE EOO R1.6
 Surface Opening: 15%

*uni-chains recommends this travel direction. However travel in both directions is possible.

	mm	in		mm	in
P (Nominal)	38.1	1.50	D	9.0	0.35
A	10.0	0.39	E	11.0	0.43
B	5.9	0.23	T	19.1	0.75
C	6.6	0.26	-	-	-

Belt material & color	POM-SX W B **
O-Tab, Wearpart material & color	POM DK O
EWC Wearpart material & color	K750: POM DK Y K1200, K1500, K1800: POM DK O K2400: POM DK B

**Please note that uni Flex ONE in POM-SX blue is not according to the standard color quality for blue. Small variations may occur.



STANDARD

SIDE FLEXING

PITCH 38.1 MM/1.50 IN

Belt width			Type	Permissible tensile force Belt/pin material				Belt weight Belt material		*Recommended No. drive sprocket per shaft	Number of wear strips (Min No.)	
				POM-SX				POM-SX			**Carry (pcs)	**Return (pcs)
Size	mm	in		Straight sections		Curve sections		kg/m	lb/ft			
			N	lbf	N	lbf						
K750	190.5	7.5	O	2400	540	2000	450	2.5	1.68	2	2	2
			EW					2.4	1.61			
			EO/EOO					2.5	1.68			
			ER					2.6	1.75			
			EWC					2.7	1.81			
K1200	304.8	12.0	O	4000	899	3400	764	4.0	2.69	4	3	2
			EW					3.9	2.62			
			EO/EOO					4.0	2.69			
			ER					4.1	2.76			
			EWC					4.2	2.82			
K1500	381.0	15.0	O	6400	1439	3500	787	4.9	3.29	6	3	2
			EW					4.9	3.29			
			EO/EOO					4.9	3.29			
			ER					5.0	3.36			
			EWC					5.1	3.43			
K1800	457.2	18.0	O	8200	1843	3600	809	6.1	4.10	6	4	2
			EW					6.1	4.10			
			EO/EOO					6.1	4.10			
			ER					6.2	4.17			
			EWC					6.2	4.17			
K2400	609.6	24.0	O	12000	2698	3800	854	7.9	5.31	6	5	3
			EW					7.8	5.24			
			EO/EOO					7.8	5.24			
			ER					7.9	5.31			
			EWC					8.1	5.44			

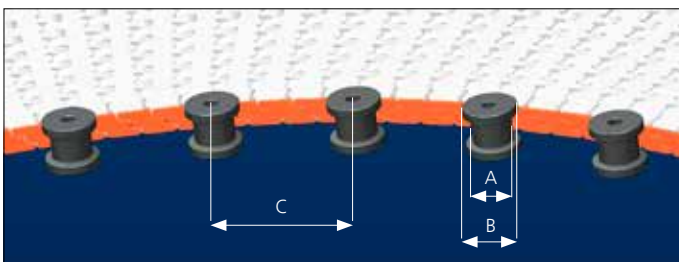
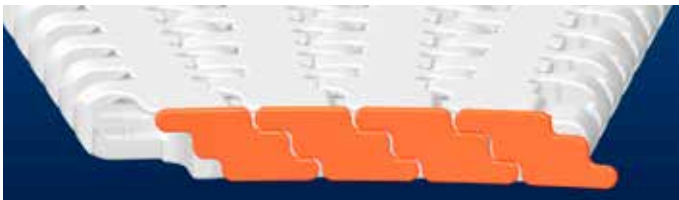
General belt tolerance is +0/-0.4% at 23°C/73°F.

*Max. Load per Drive Sprocket. Belt material: POM-SX 2500 N (562 lbf).

**Max. Spacing between wear strips, Carry: 152 mm (6 in); Return: 304 mm (12 in).

Design Guide Lines

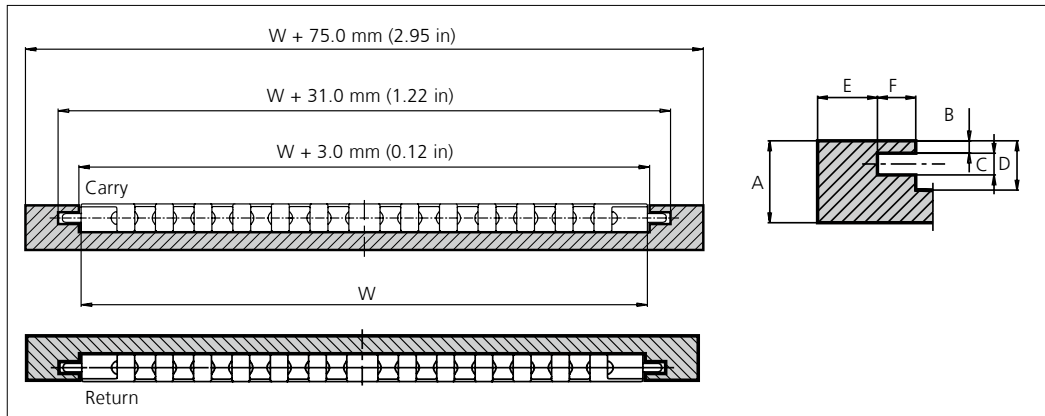
uni Flex One EWC



	mm	in
A	min \varnothing 30	min \varnothing 1¼
B	A + min 12	A + min ½
C	100-150	4-6

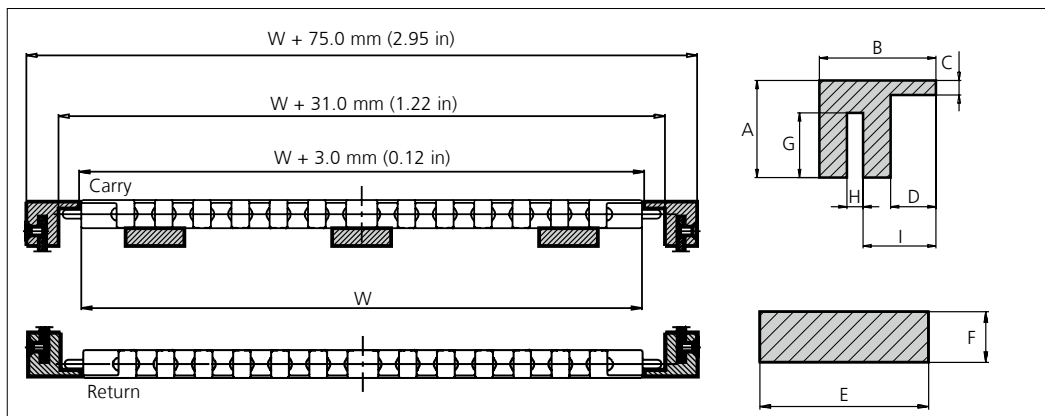
Profiles for uni Flex ONE O/EO

Compact Profile Configuration



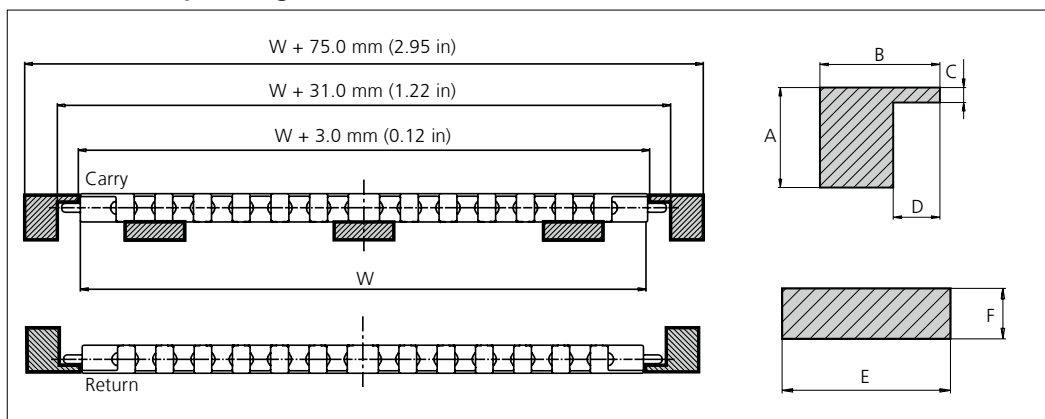
	mm	in
A	30.0	1.18
B	4.5	0.18
C	8.0	0.31
D	18.0	0.71
E	22.0	0.87
F	14.0	0.55

Slotted Wearstrip Configuration



	mm	in
A	30.0	1.18
B	36.0	1.42
C	4.5	0.18
D	14.0	0.55
E	40.0	1.57
F	12.0	0.47
G	20.0	0.79
H	5.0	0.20
I	22.5	0.89

Solid Wearstrip Configuration



	mm	in
A	30.0	1.18
B	36.0	1.42
C	4.5	0.18
D	14.0	0.55
E	40.0	1.57
F	12.0	0.47

uni Flex ONE O

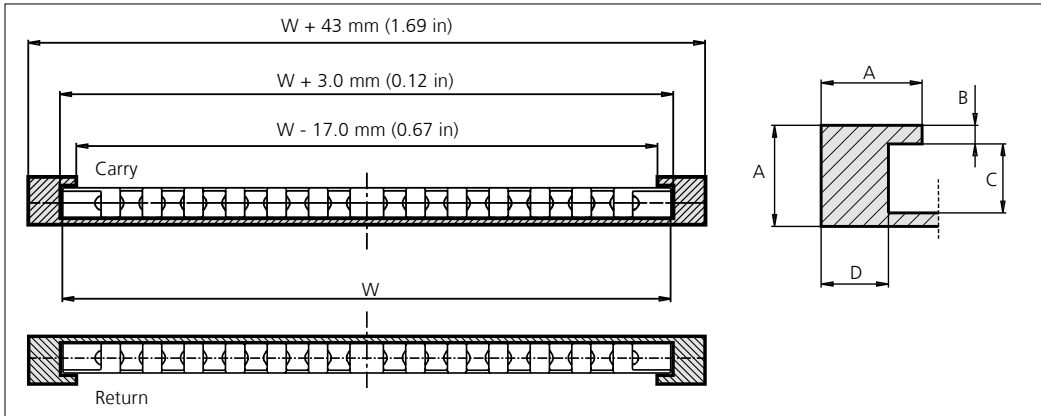
Using the uni Flex ONE with O-Tab and a slotted wearstrip, the O-Tab will allow the transported products to be wider than the belt. O-Tabs are molded into the belt to ensure cleanability and are preferred for direct food contact.

uni Flex ONE EO (Exchangeable O-Tab)

Exchangeable O-Tab system is made of heat and wear resistant material to improve performance between the belt edge and the wearstrip. Using a slotted wearstrip the exchangeable O-Tab will track the belt and allow the transported products to be wider than the belt. Resists high curve load at increased speed.

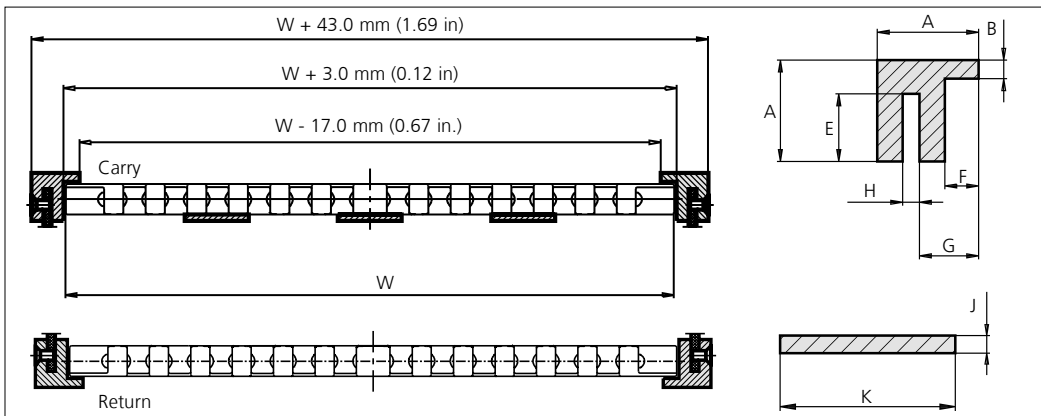
Profiles for uni Flex ONE EW/ER

Compact Profile Configuration



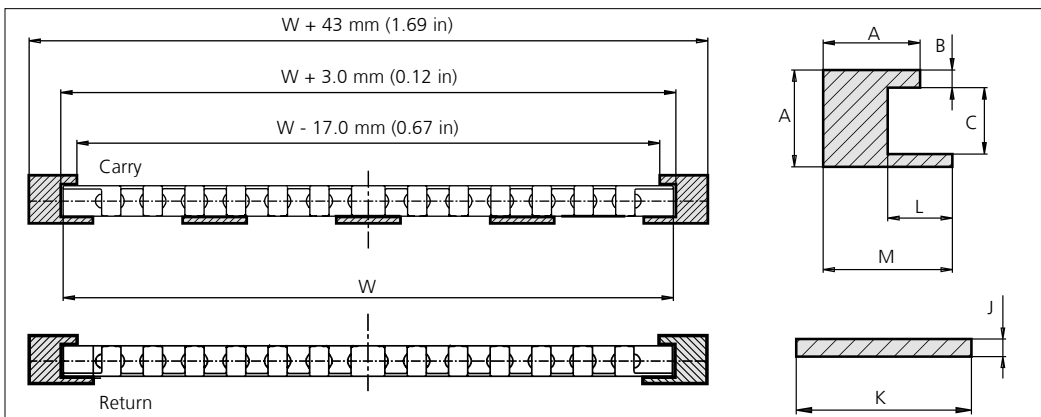
	mm	in
A	30.0	1.18
B	5.5	0.22
C	20.5	0.81
D	20.0	0.79

Slotted Wearstrip Configuration



	mm	in
A	30.0	1.18
B	5.5	0.22
E	20.0	0.79
F	10.0	0.39
G	17.5	0.69
H	5.0	0.20
J	4.0	0.16
K	40.0	1.57

Solid Wearstrip Configuration



	mm	in
A	30.0	1.18
B	5.5	0.22
C	20.5	0.81
J	4.0	0.16
K	40.0	1.57
L	20.0	0.79
M	40.0	1.57

uni Flex ONE EW (Exchangeable Wearpart)

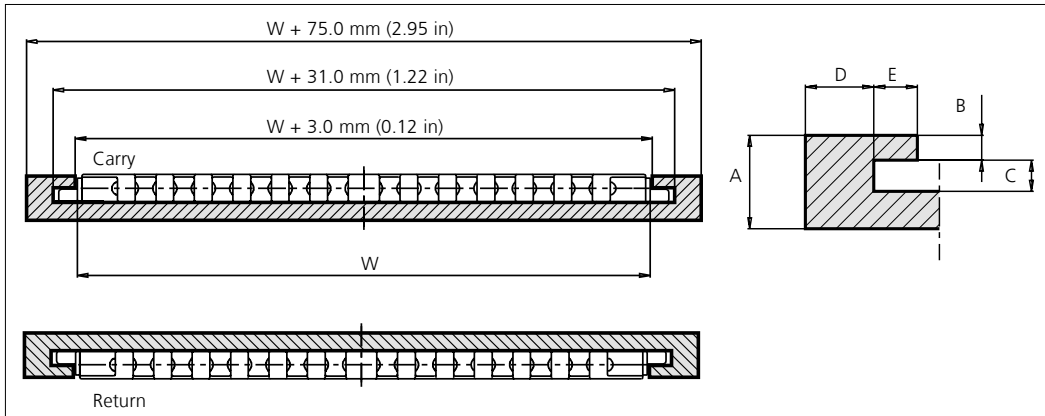
Exchangeable Wearpart system is made of heat and wear resistant material to improve performance between the belt edge and the wearstrip. This Wearpart can easily be replaced. Resists high curve load at increased speed.

uni Flex ONE ER (Exchangeable Edge Roller)

uni Flex ONE with Exchangeable Edge Rollers reduces friction in curves to a minimum making it very suitable for applications with many curves e.g. static spirals (non rotating drum) or high speed sideflexing conveyors.

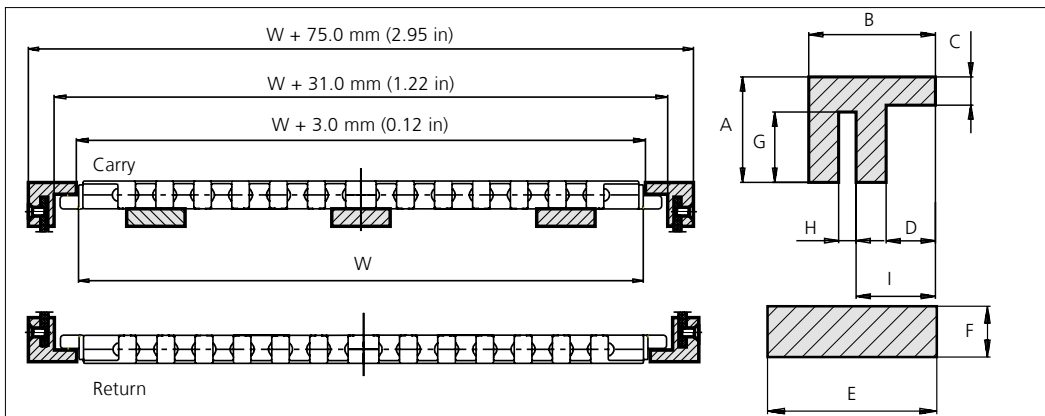
Profiles for uni Flex ONE EOO

Compact Profile Configuration



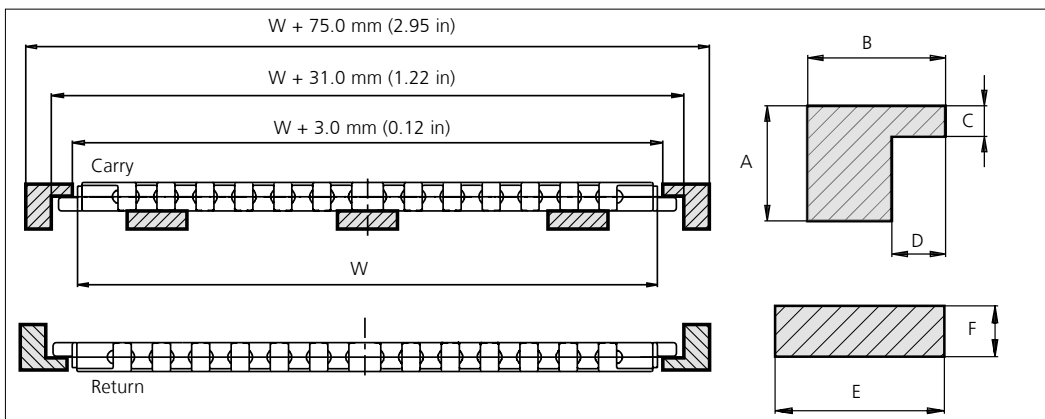
	mm	in
A	30.0	1.18
B	8.0	0.31
C	10.0	0.39
D	22.0	0.87
E	14.0	0.55

Slotted Wearstrip Configuration



	mm	in
A	30.0	1.18
B	36.0	1.42
C	8.0	0.31
D	14.0	0.55
E	40.0	1.57
F	12.0	0.47
G	20.0	0.79
H	5.0	0.20
I	22.5	0.89

Solid Wearstrip Configuration



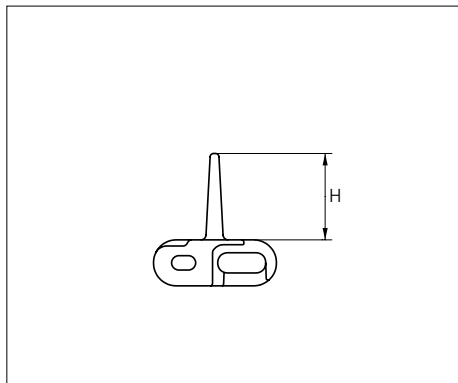
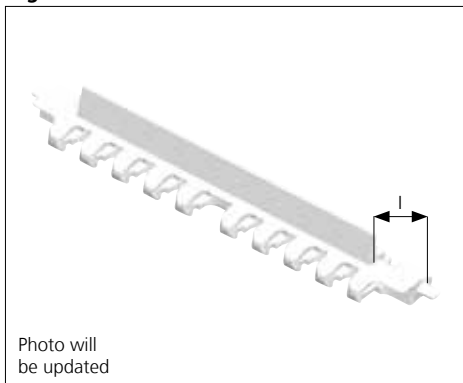
	mm	in
A	30.0	1.18
B	36.0	1.42
C	8.0	0.31
D	14.0	0.55
E	40.0	1.57
F	12.0	0.47

uni Flex ONE EOO (Exchangeable Offset O-Tab)

Exchangeable O-Tab system is made of heat and wear resistant material to improve performance between the belt edge and the wearstrip. Using a slotted wearstrip the exchangeable O-Tab will track the belt and allow the transported products to be wider than the belt. Resists high curve load at increased speed.

Accessories

Flight

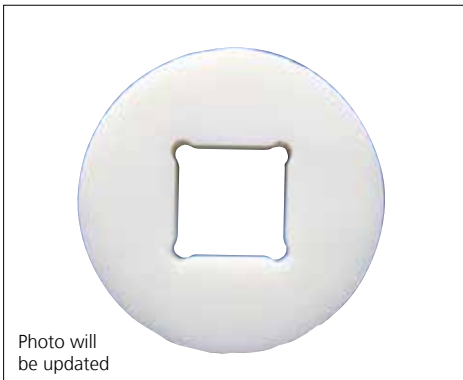


Type	Standard belt material & color	Height (H)		Indent (I)		Link size	Width	
		mm	in	mm	in		mm	in
Flight	POM-SX W B *	25.4	1.00	32.0	1.26	K1200	304.8	12.0

* Please note that uni Flex ONE in POM-SX blue is not according to the standard color quality for blue. Small variations may occur.
Non Standard material and color: See uni Material and Color Overview.

Accessories

Idler

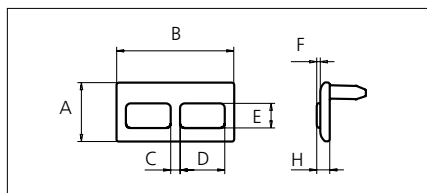


Type	Standard material & color	No. of teeth	Diameter idler	
			mm	in
Idler	POM-D N	8	72.9	2.87
		9	85.6	3.37
		11	110.7	4.36
		12	123.1	4.85
		13	135.5	5.33
		16	172.4	6.79

Thickness of idler: 20.0 mm (0.79 in).
Recommended for use at idler end to ensure smooth and low noise operation.
Non Standard material and color: See uni Material and Color Overview.

Accessories

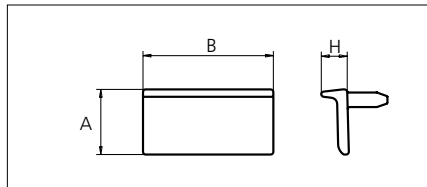
Clip On Rubber Flat



	mm	in
A	25.0	0.98
B	50.0	1.97
C	4.0	0.16
D	19.0	0.75
E	10.5	0.41
F	1.5	0.06

Accessories

Clip On Flight



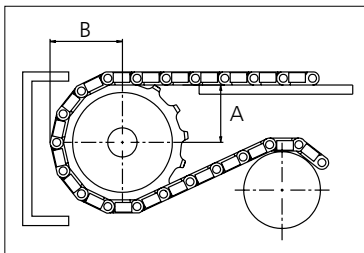
Type	Height (H)		Standard materials & colors
	mm	in	
uni Flex ONE Clip On Rubber Flat	5.5	0.22	POM-D O + Rubber 01 K
uni Flex ONE Clip On Flight	10.0	0.39	POM-D O

Sprocket

No. of teeth	Pilot Bore	Bore size											Overall diameter		Pitch diameter		Hub diameter		Dimension A		Dimension B		Single row/Two way	Double row/Two way	Machined	
		in	0.75	0.79	0.98	1.00	1.18	1.25	1.50	1.57	2.36	2.50													3.54	PAG
		mm	19.1	20.0	25.0	25.4	30.0	31.8	38.1	40.0	60.0	63.5	90.0	mm	in	mm	in	mm	in	mm	in	Molded			Machined	
Z08	x				■	●	●		●				99.9	3.93	101.0	3.98	60.0	2.36	36.5	1.44	59.0	2.32	x		x	
Z09	x					●	●		●				111.4	4.39	113.7	4.48	70.0	2.76	42.8	1.69	64.9	2.56	x		x	
Z09									■	■			111.4	4.39	113.7	4.48	74.0	2.91	42.8	1.69	64.9	2.56	x		x	
Z11	x					●	●	●					135.2	5.32	138.8	5.46	70.0	2.76	55.4	2.18	76.9	3.03	x		x	
Z11									■	■			135.2	5.32	138.8	5.46	74.0	2.91	55.4	2.18	76.9	3.03	x		x	
Z12	x					●	●	●	●				147.2	5.80	151.2	5.95	70.0	2.76	61.6	2.43	82.9	3.26	x		x	
Z12									■	■			147.2	5.80	151.2	5.95	74.0	2.91	61.6	2.43	82.9	3.26	x		x	
Z13	x					●	●	●	●				159.2	6.27	163.6	6.44	70.0	2.76	67.8	2.67	88.9	3.50	x		x	
Z13									■	■			159.2	6.27	163.6	6.44	74.0	2.91	67.8	2.67	88.9	3.50	x		x	
Z16	x					●	●	●	●				195.3	7.69	200.5	7.89	70.0	2.76	86.3	3.40	107.0	4.21	x		x	
Z16									■	■			195.3	7.69	200.5	7.89	74.0	2.91	86.3	3.40	107.0	4.21	x		x	

■ Molded sprocket

● Molded sprocket



Other sprocket sizes are available upon request
 Other bore sizes are available upon request
 uni Retainer Rings: See uni Retainer Ring data sheet
 Width of tooth = 9.0 mm (0.35 in)
 Width of sprocket = 39.0 mm (1.54 in)

Max. load per sprocket shown does not take bore size into account.
 Please also ensure that sufficient size shaft is chosen for corresponding load.

For correct sprocket position: See uni Assembly Instructions for uni Flex ONE.
 For more detailed sprocket information, contact Customer Service.

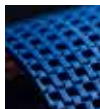
Non standard material and color: See uni Material and Color Overview.



Conveyor Belts



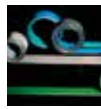
Seamless Belts



Modular Belts



Timing Belts



Transmission Belts



Fabrication & service

Expert advice, quality solutions and local service for all your belting needs www.ammeraalbeltech.com

Ammeraal Beltech Modular A/S
Hjulgagervej 21
DK-7100 Vejle

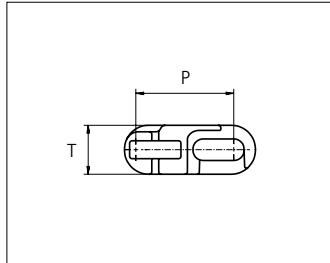
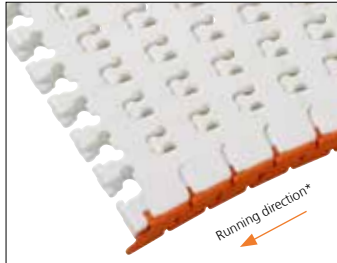
T +45 7572 3100
F +45 7572 3348
admin@unichains.com
www.unichains.com

This information is subject to alteration due to continuous development. Ammeraal Beltech will not be held liable for the incorrect use of the above stated information. This information replaces previous information. All activities performed and services rendered by Ammeraal Beltech are subject to general terms and conditions of sale and delivery, as applied by its operating companies.



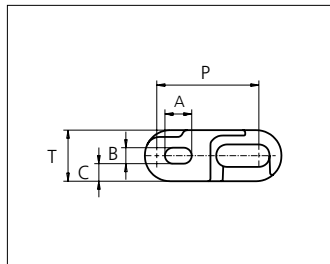
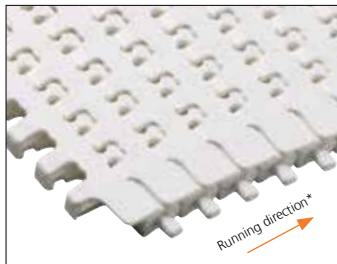
Plastic Modular Belt

Series uni Flex ONE

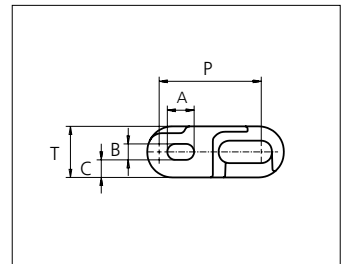
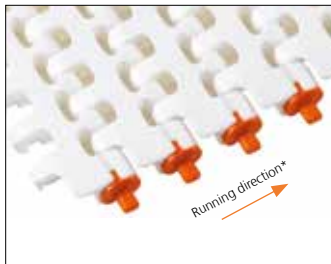


Sideflexing belt
 Nominal pitch: 38.1 mm (1.50 in)
 Surface type: Flat
 Surface opening: 15%
 Backflex radius: 50.0 mm (1.97 in)
 Min. inside radius R1.6 x belt width

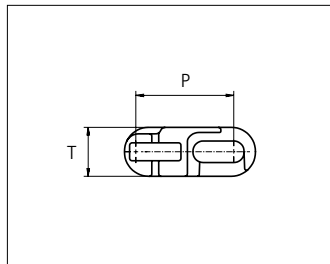
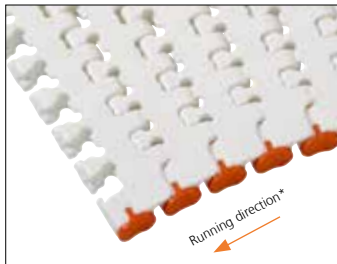
uni Flex ONE EWC R1.6
 Surface Opening: 15%



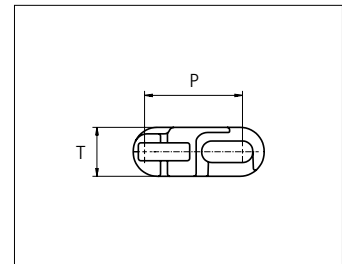
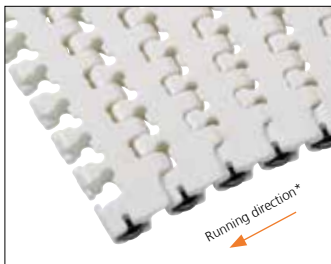
uni Flex ONE O R1.6
 Surface Opening: 15%



uni Flex ONE EO R1.6
 Surface Opening: 15%

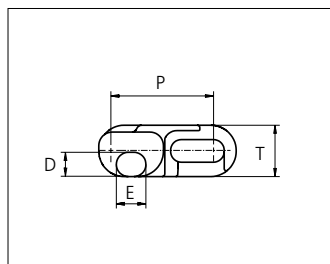
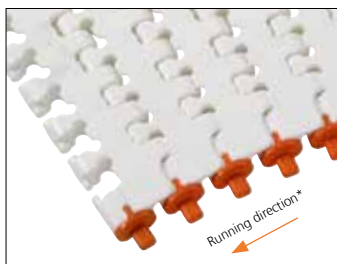


uni Flex ONE EW R1.6
 Surface Opening: 15%



uni Flex ONE ER R1.6
 Surface Opening: 15%

uni Flex ONE ER is not available for use in North America.



uni Flex ONE EOO R1.6
 Surface Opening: 15%

*uni-chains recommends this travel direction. However travel in both directions is possible.

	mm	in		mm	in
P (Nominal)	38.1	1.50	D	9.0	0.35
A	10.0	0.39	E	11.0	0.43
B	5.9	0.23	T	19.1	0.75
C	6.6	0.26	-	-	-

Belt material & color	POM-SX W B **
O-Tab, Wearpart material & color	POM DK O
EWC Wearpart material & color	K750: POM DK Y K1200, K1500, K1800: POM DK O K2400: POM DK B

**Please note that uni Flex ONE in POM-SX blue is not according to the standard color quality for blue. Small variations may occur.



STANDARD

SIDE FLEXING

PITCH 38.1 MM/1.50 IN

Belt width			Type	Permissible tensile force Belt/pin material				Belt weight Belt material		*Recommended No. drive sprocket per shaft	Number of wear strips (Min No.)	
				POM-SX				POM-SX			**Carry (pcs)	**Return (pcs)
Size	mm	in		Straight sections		Curve sections		kg/m	lb/ft			
			N	lbf	N	lbf						
K750	190.5	7.5	O	2400	540	2000	450	2.5	1.68	2	2	2
			EW					2.4	1.61			
			EO/EOO					2.5	1.68			
			ER					2.6	1.75			
			EWC					2.7	1.81			
K1200	304.8	12.0	O	4000	899	3400	764	4.0	2.69	4	3	2
			EW					3.9	2.62			
			EO/EOO					4.0	2.69			
			ER					4.1	2.76			
			EWC					4.2	2.82			
K1500	381.0	15.0	O	6400	1439	3500	787	4.9	3.29	6	3	2
			EW					4.9	3.29			
			EO/EOO					4.9	3.29			
			ER					5.0	3.36			
			EWC					5.1	3.43			
K1800	457.2	18.0	O	8200	1843	3600	809	6.1	4.10	6	4	2
			EW					6.1	4.10			
			EO/EOO					6.1	4.10			
			ER					6.2	4.17			
			EWC					6.2	4.17			
K2400	609.6	24.0	O	12000	2698	3800	854	7.9	5.31	6	5	3
			EW					7.8	5.24			
			EO/EOO					7.8	5.24			
			ER					7.9	5.31			
			EWC					8.1	5.44			

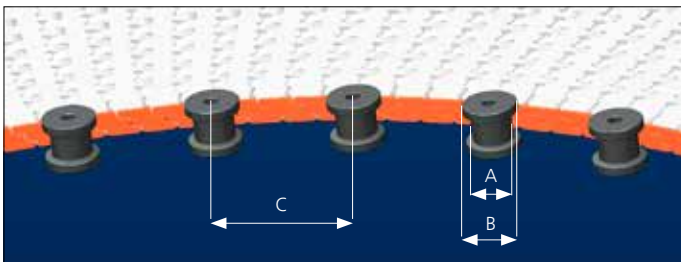
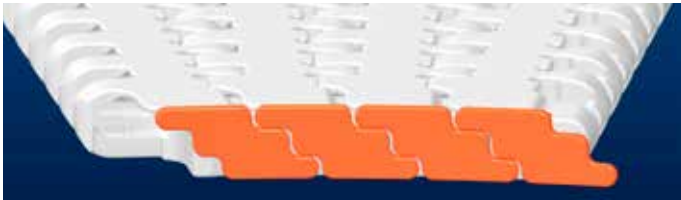
General belt tolerance is +0/-0.4% at 23°C/73°F.

*Max. Load per Drive Sprocket. Belt material: POM-SX 2500 N (562 lbf).

**Max. Spacing between wear strips, Carry: 152 mm (6 in); Return: 304 mm (12 in).

Design Guide Lines

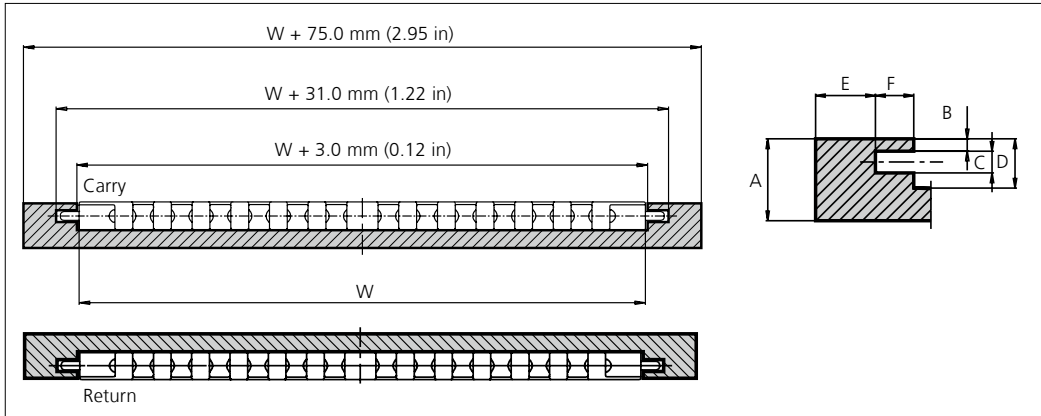
uni Flex One EWC



	mm	in
A	min \varnothing 30	min \varnothing 1¼
B	A + min 12	A + min ½
C	100-150	4-6

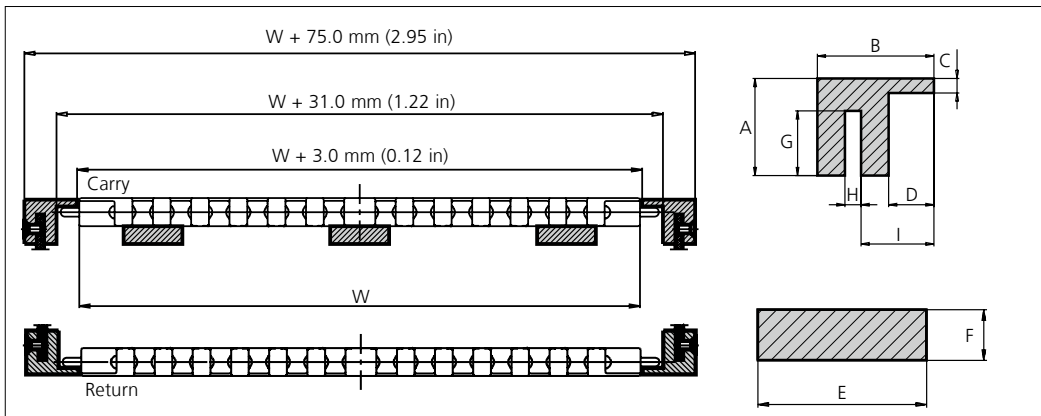
Profiles for uni Flex ONE O/EO

Compact Profile Configuration



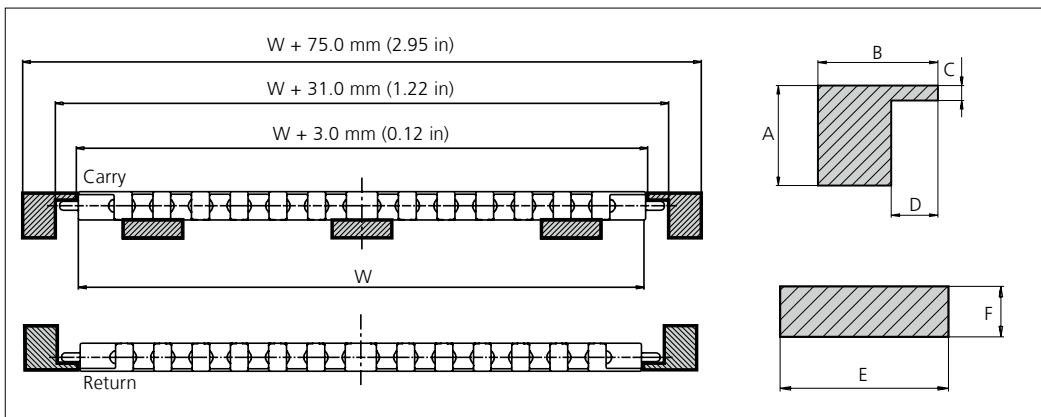
	mm	in
A	30.0	1.18
B	4.5	0.18
C	8.0	0.31
D	18.0	0.71
E	22.0	0.87
F	14.0	0.55

Slotted Wearstrip Configuration



	mm	in
A	30.0	1.18
B	36.0	1.42
C	4.5	0.18
D	14.0	0.55
E	40.0	1.57
F	12.0	0.47
G	20.0	0.79
H	5.0	0.20
I	22.5	0.89

Solid Wearstrip Configuration



	mm	in
A	30.0	1.18
B	36.0	1.42
C	4.5	0.18
D	14.0	0.55
E	40.0	1.57
F	12.0	0.47

uni Flex ONE O

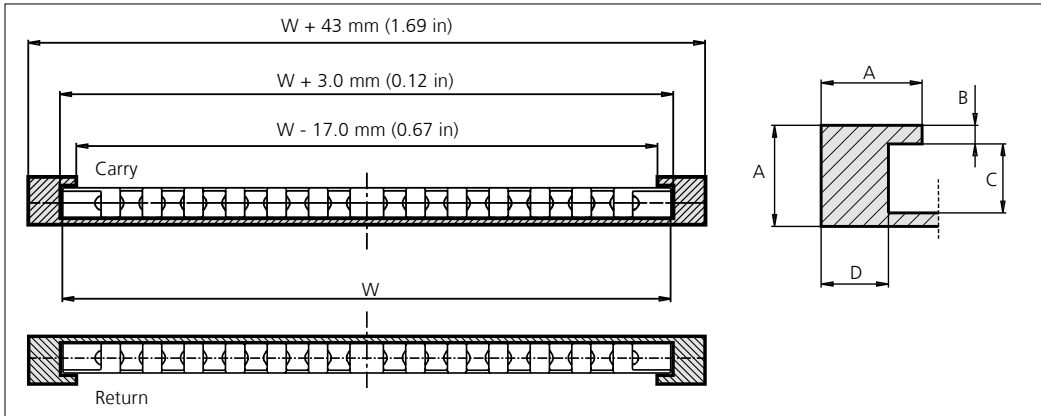
Using the uni Flex ONE with O-Tab and a slotted wearstrip, the O-Tab will allow the transported products to be wider than the belt. O-Tabs are molded into the belt to ensure cleanability and are preferred for direct food contact.

uni Flex ONE EO (Exchangeable O-Tab)

Exchangeable O-Tab system is made of heat and wear resistant material to improve performance between the belt edge and the wearstrip. Using a slotted wearstrip the exchangeable O-Tab will track the belt and allow the transported products to be wider than the belt. Resists high curve load at increased speed.

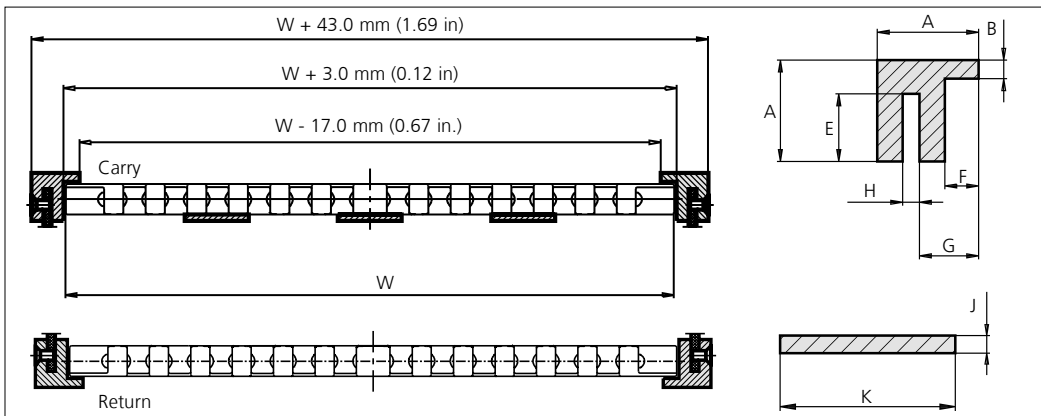
Profiles for uni Flex ONE EW/ER

Compact Profile Configuration



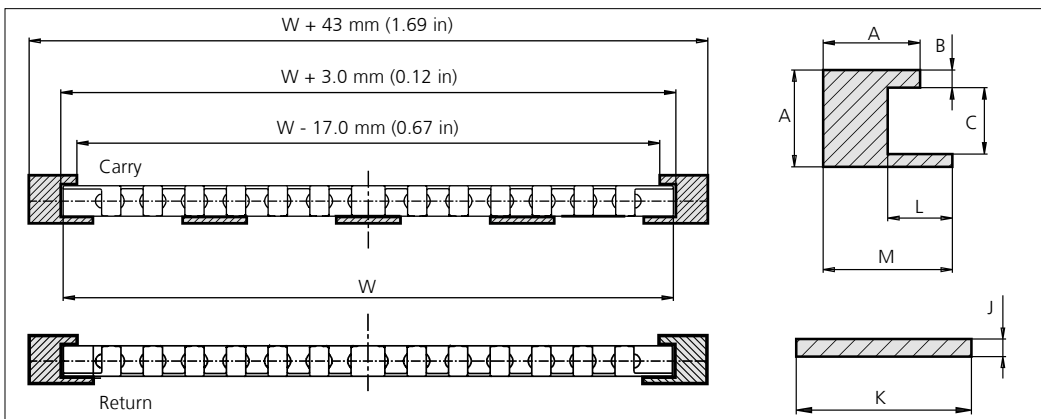
	mm	in
A	30.0	1.18
B	5.5	0.22
C	20.5	0.81
D	20.0	0.79

Slotted Wearstrip Configuration



	mm	in
A	30.0	1.18
B	5.5	0.22
E	20.0	0.79
F	10.0	0.39
G	17.5	0.69
H	5.0	0.20
J	4.0	0.16
K	40.0	1.57

Solid Wearstrip Configuration



	mm	in
A	30.0	1.18
B	5.5	0.22
C	20.5	0.81
J	4.0	0.16
K	40.0	1.57
L	20.0	0.79
M	40.0	1.57

uni Flex ONE EW (Exchangeable Wearpart)

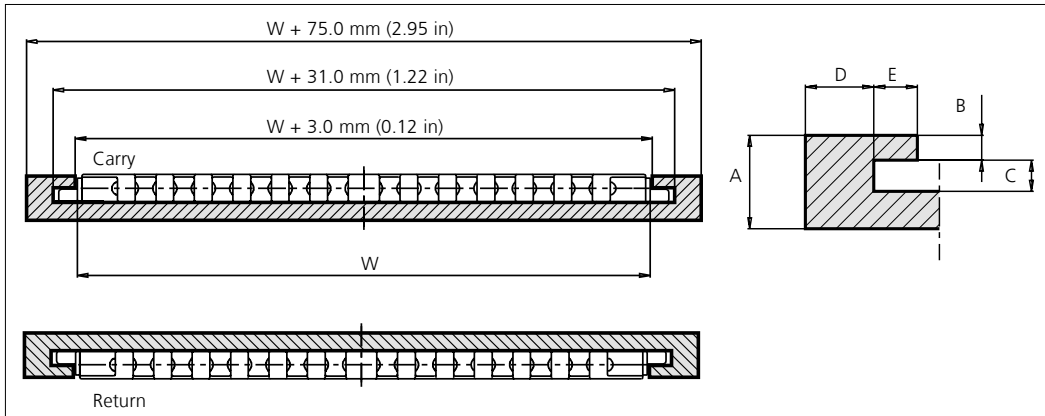
Exchangeable Wearpart system is made of heat and wear resistant material to improve performance between the belt edge and the wearstrip. This Wearpart can easily be replaced. Resists high curve load at increased speed.

uni Flex ONE ER (Exchangeable Edge Roller)

uni Flex ONE with Exchangeable Edge Rollers reduces friction in curves to a minimum making it very suitable for applications with many curves e.g. static spirals (non rotating drum) or high speed sideflexing conveyors.

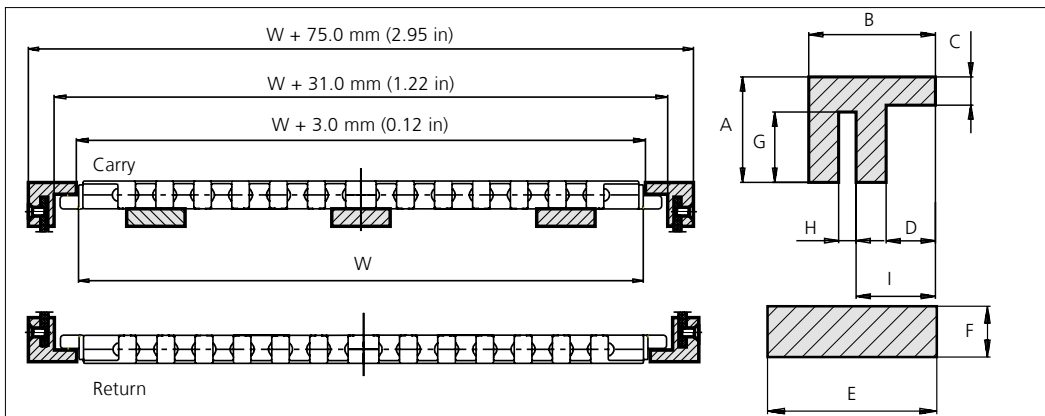
Profiles for uni Flex ONE EOO

Compact Profile Configuration



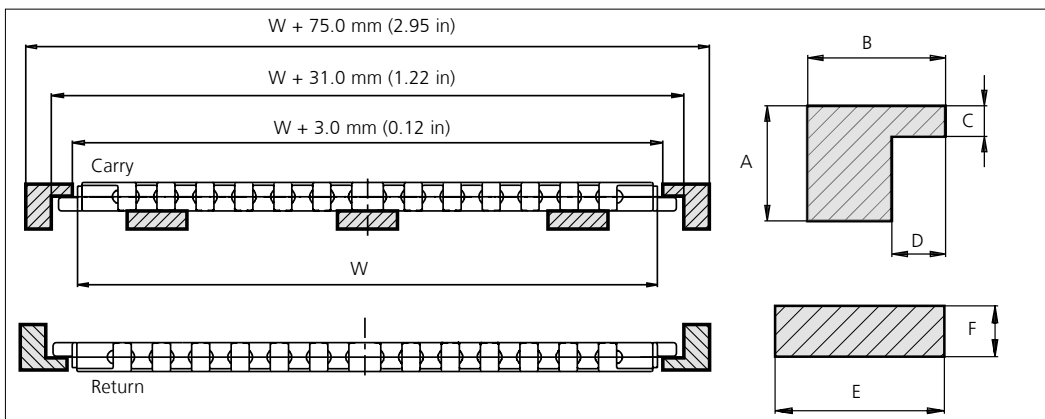
	mm	in
A	30.0	1.18
B	8.0	0.31
C	10.0	0.39
D	22.0	0.87
E	14.0	0.55

Slotted Wearstrip Configuration



	mm	in
A	30.0	1.18
B	36.0	1.42
C	8.0	0.31
D	14.0	0.55
E	40.0	1.57
F	12.0	0.47
G	20.0	0.79
H	5.0	0.20
I	22.5	0.89

Solid Wearstrip Configuration



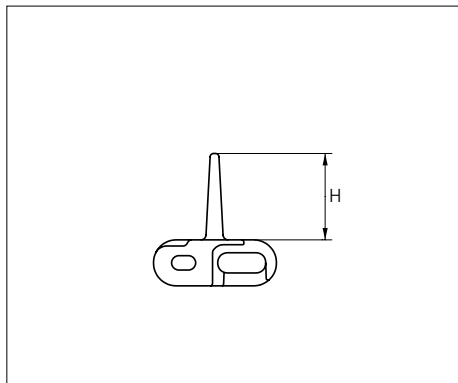
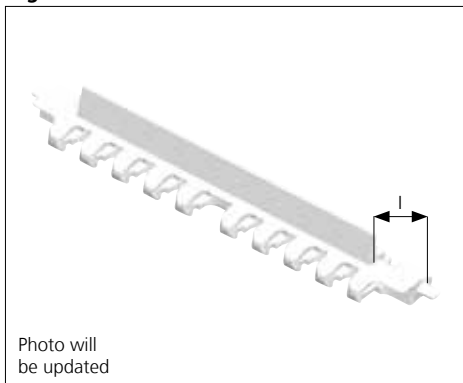
	mm	in
A	30.0	1.18
B	36.0	1.42
C	8.0	0.31
D	14.0	0.55
E	40.0	1.57
F	12.0	0.47

uni Flex ONE EOO (Exchangeable Offset O-Tab)

Exchangeable O-Tab system is made of heat and wear resistant material to improve performance between the belt edge and the wearstrip. Using a slotted wearstrip the exchangeable O-Tab will track the belt and allow the transported products to be wider than the belt. Resists high curve load at increased speed.

Accessories

Flight

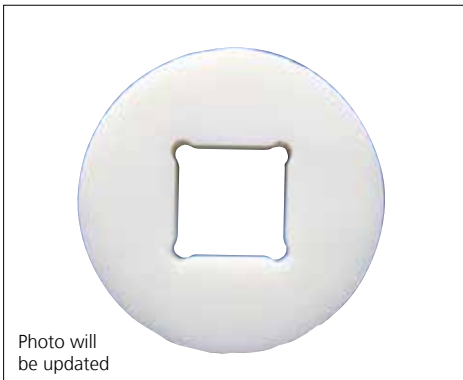


Type	Standard belt material & color	Height (H)		Indent (I)		Link size	Width	
		mm	in	mm	in		mm	in
Flight	POM-SX W B *	25.4	1.00	32.0	1.26	K1200	304.8	12.0

* Please note that uni Flex ONE in POM-SX blue is not according to the standard color quality for blue. Small variations may occur.
Non Standard material and color: See uni Material and Color Overview.

Accessories

Idler

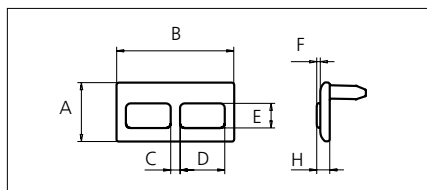


Type	Standard material & color	No. of teeth	Diameter idler	
			mm	in
Idler	POM-D N	8	72.9	2.87
		9	85.6	3.37
		11	110.7	4.36
		12	123.1	4.85
		13	135.5	5.33
		16	172.4	6.79

Thickness of idler: 20.0 mm (0.79 in).
Recommended for use at idler end to ensure smooth and low noise operation.
Non Standard material and color: See uni Material and Color Overview.

Accessories

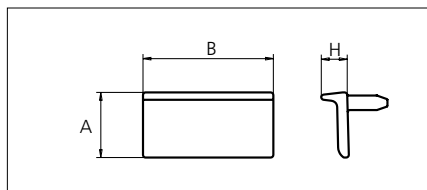
Clip On Rubber Flat



	mm	in
A	25.0	0.98
B	50.0	1.97
C	4.0	0.16
D	19.0	0.75
E	10.5	0.41
F	1.5	0.06

Accessories

Clip On Flight

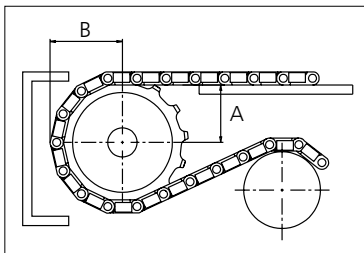


Type	Height (H)		Standard materials & colors
	mm	in	
uni Flex ONE Clip On Rubber Flat	5.5	0.22	POM-D O + Rubber 01 K
uni Flex ONE Clip On Flight	10.0	0.39	POM-D O

Sprocket

No. of teeth	Pilot Bore	Bore size											Overall diameter		Pitch diameter		Hub diameter		Dimension A		Dimension B		Single row/Two way	Double row/Two way	Machined	
		in	0.75	0.79	0.98	1.00	1.18	1.25	1.50	1.57	2.36	2.50													3.54	PAG
		mm	19.1	20.0	25.0	25.4	30.0	31.8	38.1	40.0	60.0	63.5	90.0	mm	in	mm	in	mm	in	mm	in	Molded			Machined	
Z08	x				■	●	●		●				99.9	3.93	101.0	3.98	60.0	2.36	36.5	1.44	59.0	2.32	x		x	
Z09	x					●	●		●				111.4	4.39	113.7	4.48	70.0	2.76	42.8	1.69	64.9	2.56	x		x	
Z09									■	■			111.4	4.39	113.7	4.48	74.0	2.91	42.8	1.69	64.9	2.56	x		x	
Z11	x					●	●	●					135.2	5.32	138.8	5.46	70.0	2.76	55.4	2.18	76.9	3.03	x		x	
Z11									■	■			135.2	5.32	138.8	5.46	74.0	2.91	55.4	2.18	76.9	3.03	x		x	
Z12	x					●	●	●	●				147.2	5.80	151.2	5.95	70.0	2.76	61.6	2.43	82.9	3.26	x		x	
Z12									■	■			147.2	5.80	151.2	5.95	74.0	2.91	61.6	2.43	82.9	3.26	x		x	
Z13	x					●	●	●	●				159.2	6.27	163.6	6.44	70.0	2.76	67.8	2.67	88.9	3.50	x		x	
Z13									■	■			159.2	6.27	163.6	6.44	74.0	2.91	67.8	2.67	88.9	3.50	x		x	
Z16	x					●	●	●	●				195.3	7.69	200.5	7.89	70.0	2.76	86.3	3.40	107.0	4.21	x		x	
Z16									■	■			195.3	7.69	200.5	7.89	74.0	2.91	86.3	3.40	107.0	4.21	x		x	

■ Molded sprocket ● Molded sprocket



Other sprocket sizes are available upon request
 Other bore sizes are available upon request
 uni Retainer Rings: See uni Retainer Ring data sheet
 Width of tooth = 9.0 mm (0.35 in)
 Width of sprocket = 39.0 mm (1.54 in)

Max. load per sprocket shown does not take bore size into account.
 Please also ensure that sufficient size shaft is chosen for corresponding load.

For correct sprocket position: See uni Assembly Instructions for uni Flex ONE.
 For more detailed sprocket information, contact Customer Service.

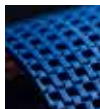
Non standard material and color: See uni Material and Color Overview.



Conveyor Belts



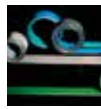
Seamless Belts



Modular Belts



Timing Belts



Transmission Belts



Fabrication & service

Expert advice, quality solutions and local service for all your belting needs www.ammeraalbeltech.com

Ammeraal Beltech Modular A/S
Hjulmagervej 21
DK-7100 Vejle

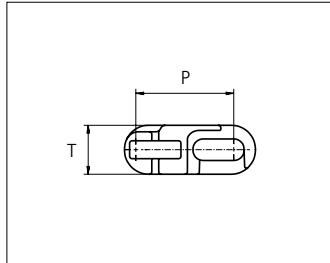
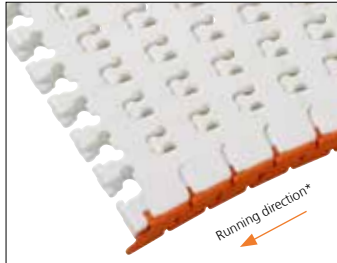
T +45 7572 3100
F +45 7572 3348
admin@unichains.com
www.unichains.com

This information is subject to alteration due to continuous development. Ammeraal Beltech will not be held liable for the incorrect use of the above stated information. This information replaces previous information. All activities performed and services rendered by Ammeraal Beltech are subject to general terms and conditions of sale and delivery, as applied by its operating companies.



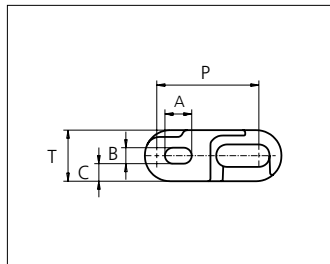
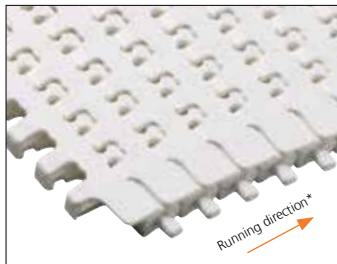
Plastic Modular Belt

Series uni Flex ONE

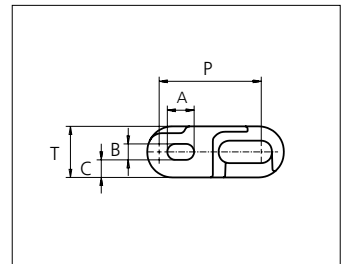
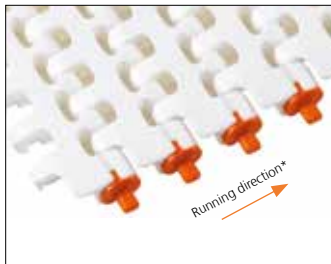


Sideflexing belt
 Nominal pitch: 38.1 mm (1.50 in)
 Surface type: Flat
 Surface opening: 15%
 Backflex radius: 50.0 mm (1.97 in)
 Min. inside radius R1.6 x belt width

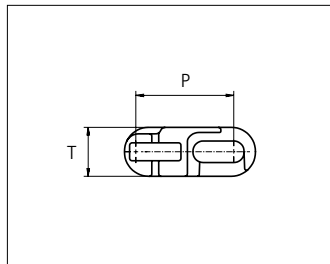
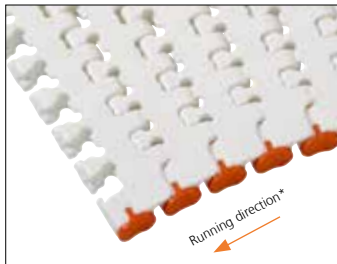
uni Flex ONE EWC R1.6
 Surface Opening: 15%



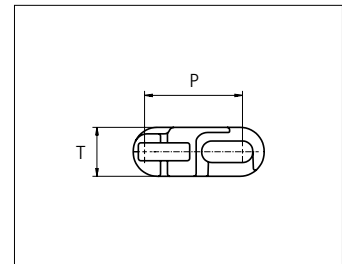
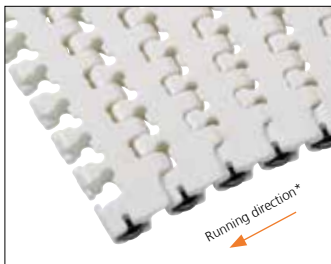
uni Flex ONE O R1.6
 Surface Opening: 15%



uni Flex ONE EO R1.6
 Surface Opening: 15%

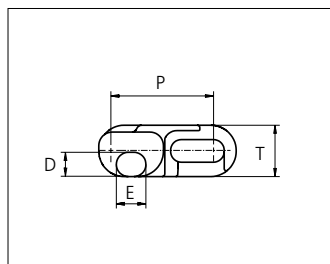
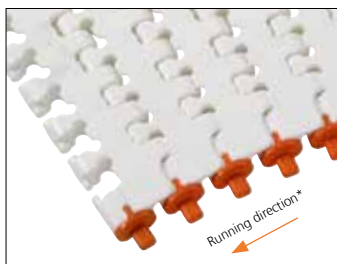


uni Flex ONE EW R1.6
 Surface Opening: 15%



uni Flex ONE ER R1.6
 Surface Opening: 15%

uni Flex ONE ER is not available for use in North America.



uni Flex ONE EOO R1.6
 Surface Opening: 15%

*uni-chains recommends this travel direction. However travel in both directions is possible.

	mm	in		mm	in
P (Nominal)	38.1	1.50	D	9.0	0.35
A	10.0	0.39	E	11.0	0.43
B	5.9	0.23	T	19.1	0.75
C	6.6	0.26	-	-	-

Belt material & color	POM-SX W B **
O-Tab, Wearpart material & color	POM DK O
EWC Wearpart material & color	K750: POM DK Y K1200, K1500, K1800: POM DK O K2400: POM DK B

**Please note that uni Flex ONE in POM-SX blue is not according to the standard color quality for blue. Small variations may occur.



STANDARD
 SIDE FLEXING
 PITCH 38.1 MM/1.50 IN

Belt width			Type	Permissible tensile force Belt/pin material				Belt weight Belt material		*Recommended No. drive sprocket per shaft	Number of wear strips (Min No.)	
				POM-SX				POM-SX			**Carry (pcs)	**Return (pcs)
Size	mm	in		Straight sections		Curve sections		kg/m	lb/ft			
			N	lbf	N	lbf						
K750	190.5	7.5	O	2400	540	2000	450	2.5	1.68	2	2	2
			EW					2.4	1.61			
			EO/EOO					2.5	1.68			
			ER					2.6	1.75			
			EWC					2.7	1.81			
K1200	304.8	12.0	O	4000	899	3400	764	4.0	2.69	4	3	2
			EW					3.9	2.62			
			EO/EOO					4.0	2.69			
			ER					4.1	2.76			
			EWC					4.2	2.82			
K1500	381.0	15.0	O	6400	1439	3500	787	4.9	3.29	6	3	2
			EW					4.9	3.29			
			EO/EOO					4.9	3.29			
			ER					5.0	3.36			
			EWC					5.1	3.43			
K1800	457.2	18.0	O	8200	1843	3600	809	6.1	4.10	6	4	2
			EW					6.1	4.10			
			EO/EOO					6.1	4.10			
			ER					6.2	4.17			
			EWC					6.2	4.17			
K2400	609.6	24.0	O	12000	2698	3800	854	7.9	5.31	6	5	3
			EW					7.8	5.24			
			EO/EOO					7.8	5.24			
			ER					7.9	5.31			
			EWC					8.1	5.44			

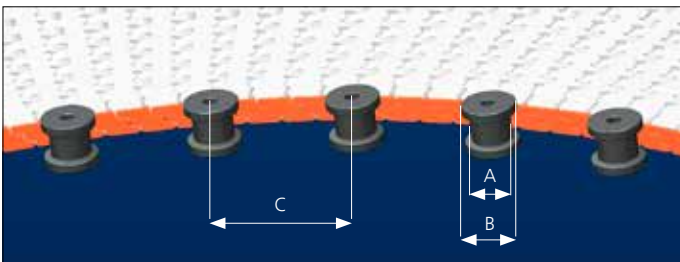
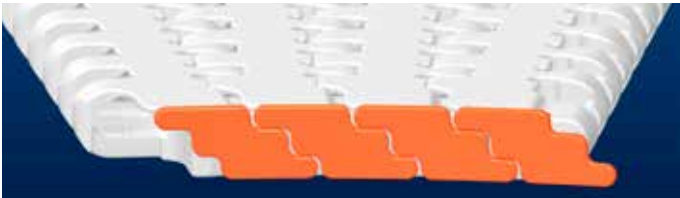
General belt tolerance is +0/-0.4% at 23°C/73°F.

*Max. Load per Drive Sprocket. Belt material: POM-SX 2500 N (562 lbf).

**Max. Spacing between wear strips, Carry: 152 mm (6 in); Return: 304 mm (12 in).

Design Guide Lines

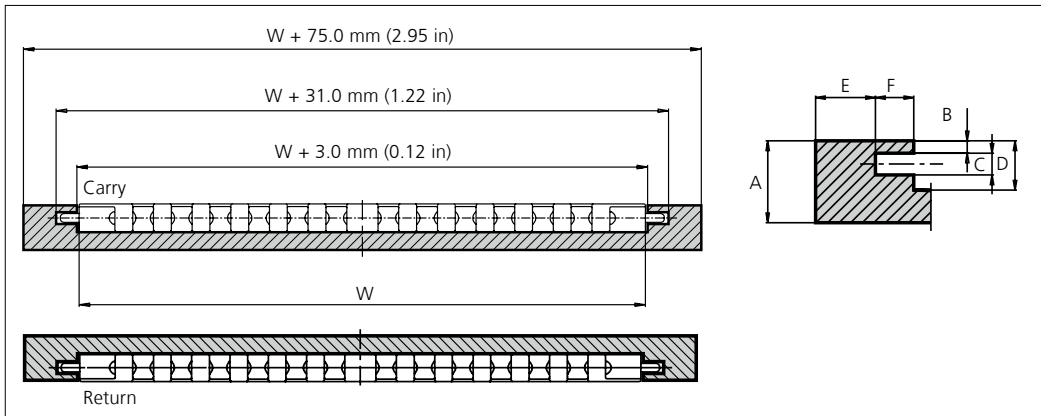
uni Flex One EWC



	mm	in
A	min \varnothing 30	min \varnothing 1¼
B	A + min 12	A + min ½
C	100-150	4-6

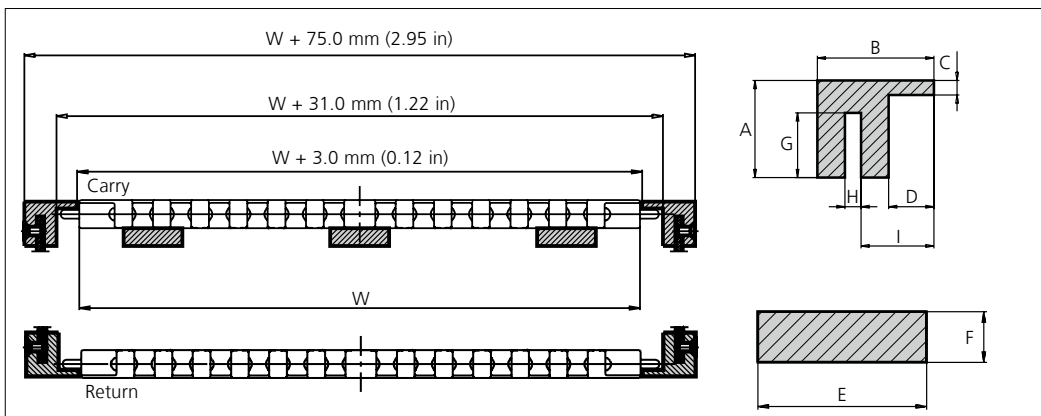
Profiles for uni Flex ONE O/EO

Compact Profile Configuration



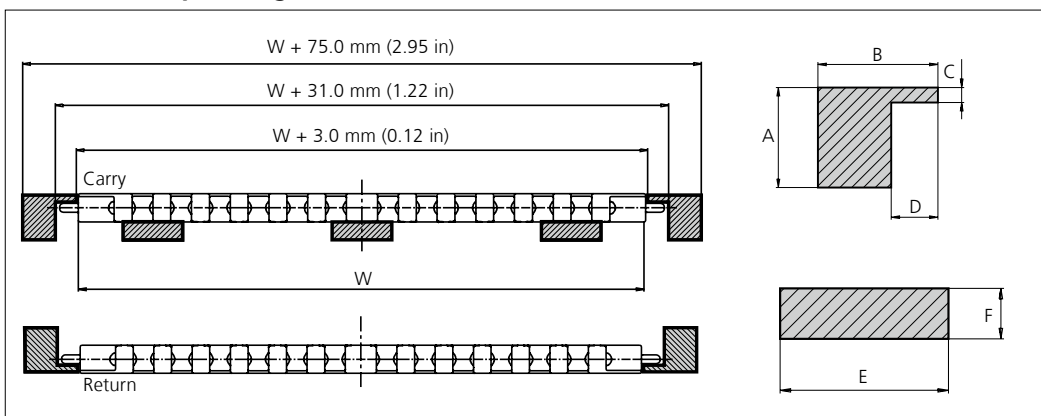
	mm	in
A	30.0	1.18
B	4.5	0.18
C	8.0	0.31
D	18.0	0.71
E	22.0	0.87
F	14.0	0.55

Slotted Wearstrip Configuration



	mm	in
A	30.0	1.18
B	36.0	1.42
C	4.5	0.18
D	14.0	0.55
E	40.0	1.57
F	12.0	0.47
G	20.0	0.79
H	5.0	0.20
I	22.5	0.89

Solid Wearstrip Configuration



	mm	in
A	30.0	1.18
B	36.0	1.42
C	4.5	0.18
D	14.0	0.55
E	40.0	1.57
F	12.0	0.47

uni Flex ONE O

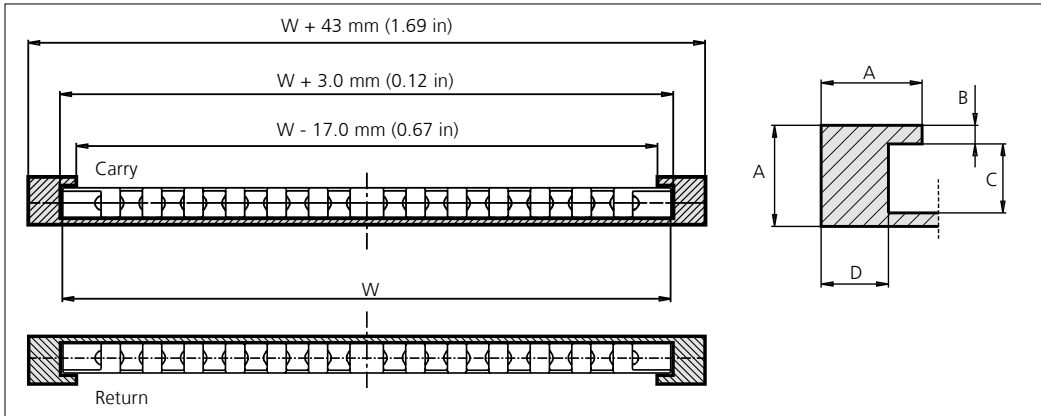
Using the uni Flex ONE with O-Tab and a slotted wearstrip, the O-Tab will allow the transported products to be wider than the belt. O-Tabs are molded into the belt to ensure cleanability and are preferred for direct food contact.

uni Flex ONE EO (Exchangeable O-Tab)

Exchangeable O-Tab system is made of heat and wear resistant material to improve performance between the belt edge and the wearstrip. Using a slotted wearstrip the exchangeable O-Tab will track the belt and allow the transported products to be wider than the belt. Resists high curve load at increased speed.

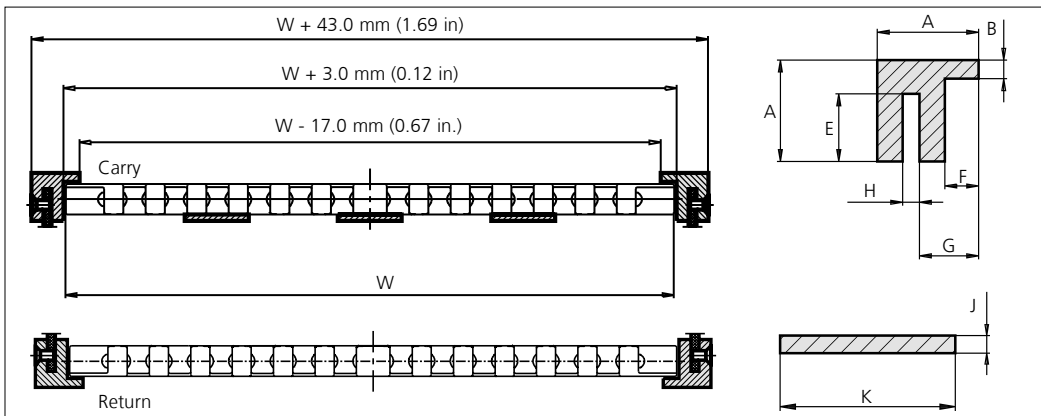
Profiles for uni Flex ONE EW/ER

Compact Profile Configuration



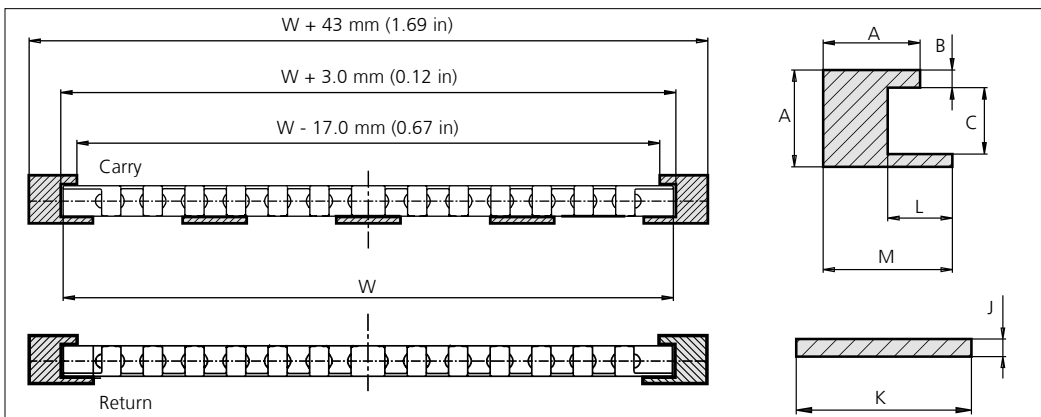
	mm	in
A	30.0	1.18
B	5.5	0.22
C	20.5	0.81
D	20.0	0.79

Slotted Wearstrip Configuration



	mm	in
A	30.0	1.18
B	5.5	0.22
E	20.0	0.79
F	10.0	0.39
G	17.5	0.69
H	5.0	0.20
J	4.0	0.16
K	40.0	1.57

Solid Wearstrip Configuration



	mm	in
A	30.0	1.18
B	5.5	0.22
C	20.5	0.81
J	4.0	0.16
K	40.0	1.57
L	20.0	0.79
M	40.0	1.57

uni Flex ONE EW (Exchangeable Wearpart)

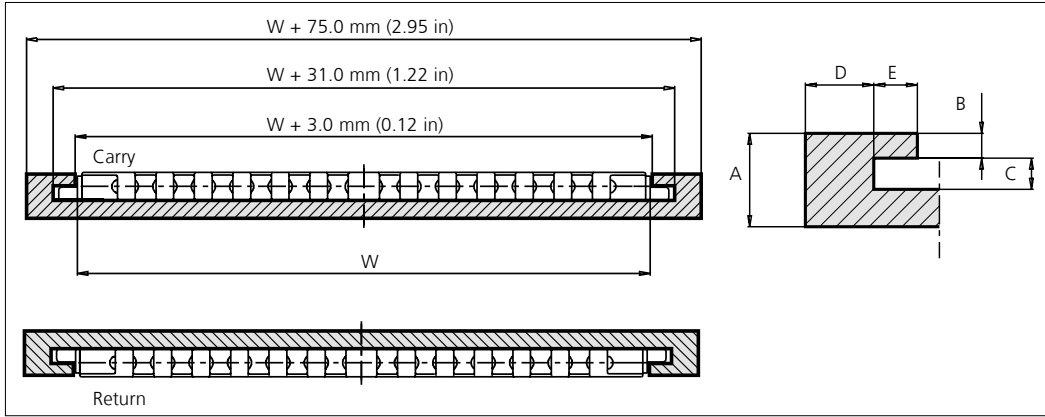
Exchangeable Wearpart system is made of heat and wear resistant material to improve performance between the belt edge and the wearstrip. This Wearpart can easily be replaced. Resists high curve load at increased speed.

uni Flex ONE ER (Exchangeable Edge Roller)

uni Flex ONE with Exchangeable Edge Rollers reduces friction in curves to a minimum making it very suitable for applications with many curves e.g. static spirals (non rotating drum) or high speed sideflexing conveyors.

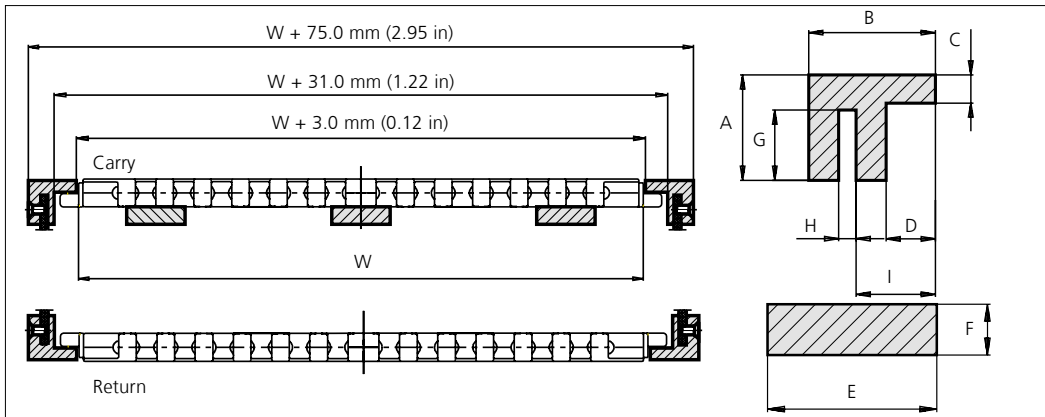
Profiles for uni Flex ONE EOO

Compact Profile Configuration



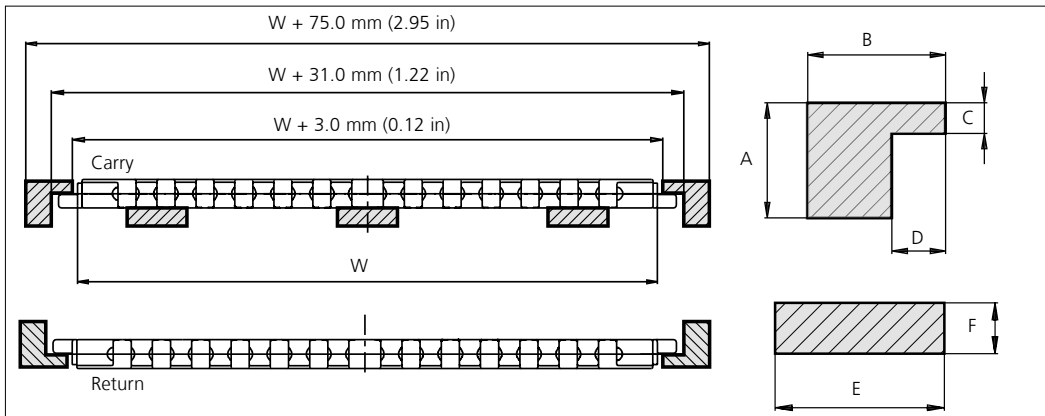
	mm	in
A	30.0	1.18
B	8.0	0.31
C	10.0	0.39
D	22.0	0.87
E	14.0	0.55

Slotted Wearstrip Configuration



	mm	in
A	30.0	1.18
B	36.0	1.42
C	8.0	0.31
D	14.0	0.55
E	40.0	1.57
F	12.0	0.47
G	20.0	0.79
H	5.0	0.20
I	22.5	0.89

Solid Wearstrip Configuration



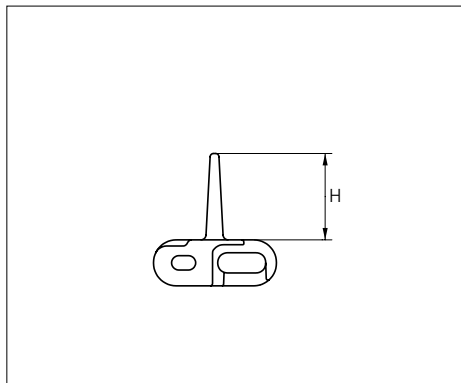
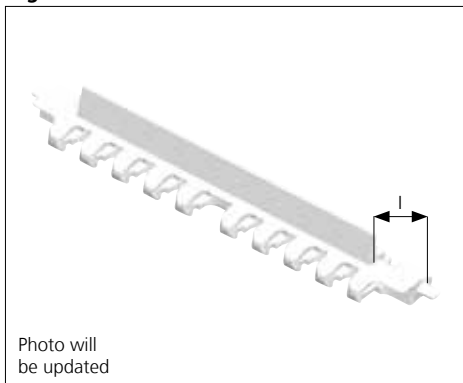
	mm	in
A	30.0	1.18
B	36.0	1.42
C	8.0	0.31
D	14.0	0.55
E	40.0	1.57
F	12.0	0.47

uni Flex ONE EOO (Exchangeable Offset O-Tab)

Exchangeable O-Tab system is made of heat and wear resistant material to improve performance between the belt edge and the wearstrip. Using a slotted wearstrip the exchangeable O-Tab will track the belt and allow the transported products to be wider than the belt. Resists high curve load at increased speed.

Accessories

Flight

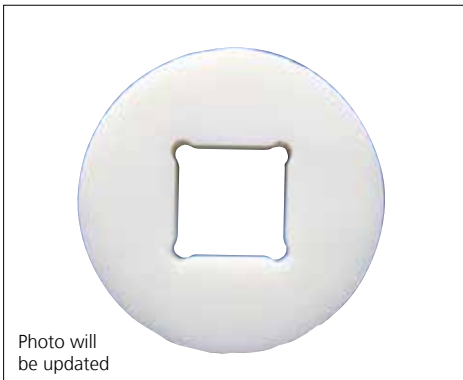


Type	Standard belt material & color	Height (H)		Indent (I)		Link size	Width	
		mm	in	mm	in		mm	in
Flight	POM-SX W B *	25.4	1.00	32.0	1.26	K1200	304.8	12.0

* Please note that uni Flex ONE in POM-SX blue is not according to the standard color quality for blue. Small variations may occur.
Non Standard material and color: See uni Material and Color Overview.

Accessories

Idler

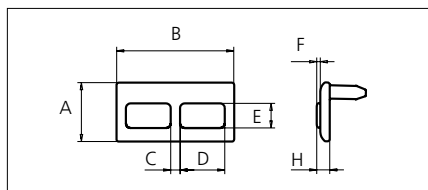


Type	Standard material & color	No. of teeth	Diameter idler	
			mm	in
Idler	POM-D N	8	72.9	2.87
		9	85.6	3.37
		11	110.7	4.36
		12	123.1	4.85
		13	135.5	5.33
		16	172.4	6.79

Thickness of idler: 20.0 mm (0.79 in).
Recommended for use at idler end to ensure smooth and low noise operation.
Non Standard material and color: See uni Material and Color Overview.

Accessories

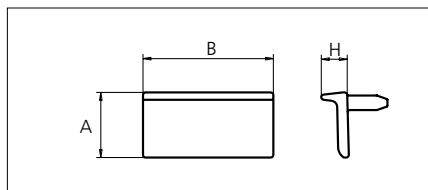
Clip On Rubber Flat



	mm	in
A	25.0	0.98
B	50.0	1.97
C	4.0	0.16
D	19.0	0.75
E	10.5	0.41
F	1.5	0.06

Accessories

Clip On Flight

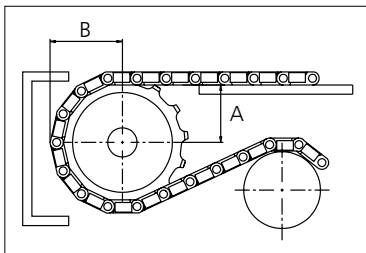
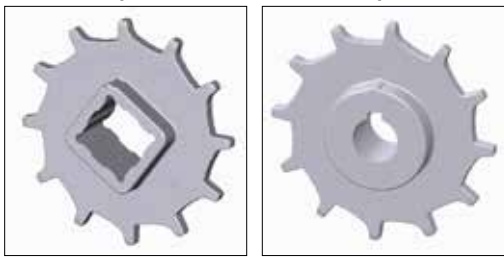


Type	Height (H)		Standard materials & colors
	mm	in	
uni Flex ONE Clip On Rubber Flat	5.5	0.22	POM-D O + Rubber 01 K
uni Flex ONE Clip On Flight	10.0	0.39	POM-D O

Sprocket

No. of teeth	Pilot Bore	Bore size											Overall diameter		Pitch diameter		Hub diameter		Dimension A		Dimension B		Single row/Two way	Double row/Two way	Machined	
		in	0.75	0.79	0.98	1.00	1.18	1.25	1.50	1.57	2.36	2.50													3.54	PAG
		mm	19.1	20.0	25.0	25.4	30.0	31.8	38.1	40.0	60.0	63.5	90.0	mm	in	mm	in	mm	in	mm	in	Molded			Machined	
Z08	x				■	●	●		●				99.9	3.93	101.0	3.98	60.0	2.36	36.5	1.44	59.0	2.32	x		x	
Z09	x					●	●		●				111.4	4.39	113.7	4.48	70.0	2.76	42.8	1.69	64.9	2.56	x		x	
Z09									■	■			111.4	4.39	113.7	4.48	74.0	2.91	42.8	1.69	64.9	2.56	x		x	
Z11	x					●	●	●					135.2	5.32	138.8	5.46	70.0	2.76	55.4	2.18	76.9	3.03	x		x	
Z11									■	■			135.2	5.32	138.8	5.46	74.0	2.91	55.4	2.18	76.9	3.03	x		x	
Z12	x					●	●	●	●				147.2	5.80	151.2	5.95	70.0	2.76	61.6	2.43	82.9	3.26	x		x	
Z12									■	■			147.2	5.80	151.2	5.95	74.0	2.91	61.6	2.43	82.9	3.26	x		x	
Z13	x					●	●	●	●				159.2	6.27	163.6	6.44	70.0	2.76	67.8	2.67	88.9	3.50	x		x	
Z13									■	■			159.2	6.27	163.6	6.44	74.0	2.91	67.8	2.67	88.9	3.50	x		x	
Z16	x					●	●	●	●				195.3	7.69	200.5	7.89	70.0	2.76	86.3	3.40	107.0	4.21	x		x	
Z16									■	■			195.3	7.69	200.5	7.89	74.0	2.91	86.3	3.40	107.0	4.21	x		x	

■ Molded sprocket ● Molded sprocket



Other sprocket sizes are available upon request
 Other bore sizes are available upon request
 uni Retainer Rings: See uni Retainer Ring data sheet
 Width of tooth = 9.0 mm (0.35 in)
 Width of sprocket = 39.0 mm (1.54 in)

Max. load per sprocket shown does not take bore size into account.
 Please also ensure that sufficient size shaft is chosen for corresponding load.

For correct sprocket position: See uni Assembly Instructions for uni Flex ONE.
 For more detailed sprocket information, contact Customer Service.

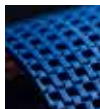
Non standard material and color: See uni Material and Color Overview.



Conveyor Belts



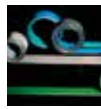
Seamless Belts



Modular Belts



Timing Belts



Transmission Belts



Fabrication & service

Expert advice, quality solutions and local service for all your belting needs www.ammeraalbeltech.com

Ammeraal Beltech Modular A/S
Hjulmagervej 21
DK-7100 Vejle

T +45 7572 3100
F +45 7572 3348
admin@unichains.com
www.unichains.com

This information is subject to alteration due to continuous development. Ammeraal Beltech will not be held liable for the incorrect use of the above stated information. This information replaces previous information. All activities performed and services rendered by Ammeraal Beltech are subject to general terms and conditions of sale and delivery, as applied by its operating companies.

Local Contacts

Austria

T +43 171728 133
info-de@ammeraalbeltech.com
www.ammeraalbeltech.at

Belgium

T +32 2 466 03 00
info-be@ammeraalbeltech.com
www.ammeraalbeltech.be

Canada

T +1 905 890 1311
info-ca@ammeraalbeltech.com
www.ammeraalbeltech.com

Chile

T +56 2 233 12900
info-cl@ammeraalbeltech.com
www.ammeraalbeltech.cl

China

T +86 512 8287 2709
info-cn@ammeraalbeltech.com
www.ammeraalbeltech.com.cn

Czech Republic

T +420 567 117 211
info-cz@ammeraalbeltech.com
www.ammeraalbeltech.cz

Denmark

T + 45 7572 3100
info-dk@ammeraalbeltech.com
www.unichains.com

Finland

T +358 207 911 400
info-fi@ammeraalbeltech.com
www.ammeraalbeltech.fi

France

T +33 3 20 90 36 00
info-fr@ammeraalbeltech.com
www.ammeraalbeltech.fr

Germany

T +49 4152 937-0
info-de@ammeraalbeltech.com
www.ammeraalbeltech.de

Hungary

T +36 30 311 6099
info-hu@ammeraalbeltech.com
www.ammeraalbeltech.hu

India

T +91 44 265 34 244
info-in@ammeraalbeltech.com
www.ammeraalbeltech.com

Italy

T +39 051 660 60 06
info-it@ammeraalbeltech.com
www.ammeraalbeltech.it

Luxembourg

T +352 26 48 38 56
info-lu@ammeraalbeltech.com
www.ammeraal-beltech.lu

Malaysia

T +60 3 806 188 49
info-my@ammeraalbeltech.com
www.ammeraalbeltech.com

Netherlands

T +31 72 57 51212
info-nl@ammeraalbeltech.com
www.ammeraalbeltech.nl

Poland

T +48 32 44 77 179
info-pl@ammeraalbeltech.com
www.ammeraalbeltech.com

Portugal

T +351 22 947 94 40
info-pt@ammeraalbeltech.com
www.ammeraalbeltech.pt

Singapore

T +65 62739767
info-sg@ammeraalbeltech.com
www.ammeraalbeltech.com

Slovakia

T +421 2 55648541-2
info-sk@ammeraalbeltech.com
www.ammeraalbeltech.sk

South Korea

T +82 31 448 3613-7
info-kr@ammeraalbeltech.com
www.ammeraalbeltech.co.kr

Spain

T +34 93 718 3054
info-es@ammeraalbeltech.com
www.ammeraalbeltech.es

Sweden

T +46 44 780 3010
info-se@ammeraalbeltech.com
www.ammeraalbeltech.se

Switzerland

T +41 55 2253 535
info-ch@ammeraalbeltech.com
www.ammeraalbeltech.ch

Thailand

T +66 2 902 2604-13
info-th@ammeraalbeltech.com
www.ammeraalbeltech.com

United Kingdom

T +44 1992 500550
info-uk@ammeraalbeltech.com
www.ammeraalbeltech.co.uk

United States

T +1 847 673 6720
info-us@ammeraalbeltech.com
www.ammeraalbeltech.com

Vietnam

T +84 8 376 562 05
info-vn@ammeraalbeltech.com
www.ammeraalbeltech.com.vn

Global Headquarters:

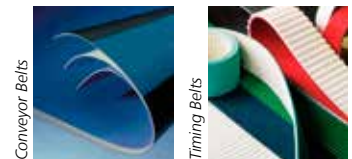
Ammeraal Beltech Holding B.V.

P.O. Box 38
1700 AA Heerhugowaard
The Netherlands

T +31 (0)72 575 1212
F +31 (0)72 571 6455

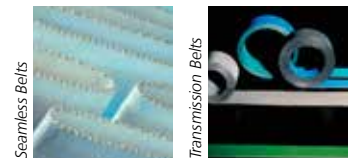
info@ammeraalbeltech.com
www.ammeraalbeltech.com

Expert advice, quality solutions
and local service
for all your belting needs



Conveyor Belts

Timing Belts



Seamless Belts

Transmission Belts



Modular Belts

Fabrication & service

... and 150 more service contact points on www.ammeraalbeltech.com