

Ammeraal Beltech Modular

Innovative belt and chain solutions
for every industry & application



Content

uni Flex OSB R2.2

page 3 - 4

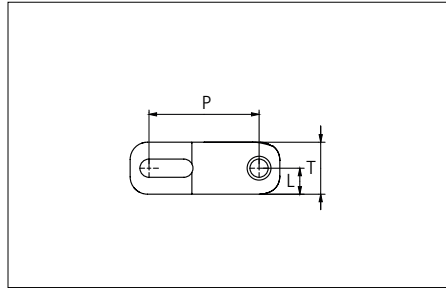
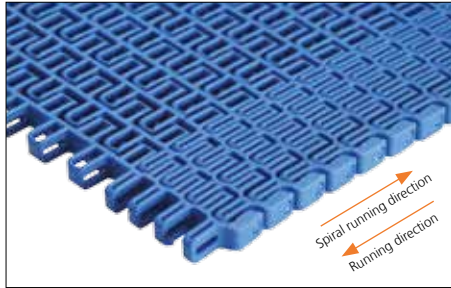
uni Flex OSB R2.5/3.0/3.5/4.0

page 5 - 6



Plastic Modular Belt

Series **uni Flex OSB** Type **60% Open Radius 2.2**



Sideflexing belt
 Nominal pitch: 25.4 mm (1.00 in)
 Surface type: Open
 Surface opening: 60%
 Backflex radius: 30.0 mm (1.18 in)
 Pin diameter: 4.0 mm (0.16 in)
 Min. inside radius: R2.2 x belt width

Belt material & color	POM-D B	PP B	mm	in	mm	in		
	Pin and lock material & color		P (Nominal)	25.4	1.00	T	12.0	0.47
		PA6.6 B	L	6.0	0.24	-	-	-

Non standard material and color: See uni Material and Color Overview.

Alternative pin and lock materials:

✂ Snap Pin A1: PP **W** PBT **LG** PA6.6 **B**

Belt width		Permissible tensile force (Belt/pin material)								Belt weight (Belt/pin material)				*Min. No. drive sprocket per shaft	Number of wear strips (Min. No.)	
		POM-D/PA6.6				PP/PA6.6				POM-D/PA6.6		PP/PA6.6			Carry (pcs)	Return (pcs)
		Straight sections		Curve sections		Straight sections		Curve sections		kg/m	lb/ft	kg/m	lb/ft			
mm	in	N	lbf	N	lbf	N	lbf	N	lbf	kg/m	lb/ft	kg/m	lb/ft			
303	11.9	3333	749	2040	459	2485	559	1224	275	1.6	1.10	1.1	0.77	3	2	2
379	14.9	3979	894	2040	459	2979	670	1224	275	2.1	1.38	1.4	0.96	3	2	2
456	18.0	4634	1042	2040	459	3479	782	1224	275	2.5	1.66	1.7	1.16	5	2	2
533	21.0	5288	1189	2040	459	3980	895	1224	275	2.9	1.94	2.0	1.35	5	2	2
610	24.0	5943	1336	2040	459	4480	1007	1224	275	3.3	2.22	2.3	1.55	5	3	3
686	27.0	6589	1481	2040	459	4974	1118	1224	275	3.7	2.49	2.6	1.74	5	3	3
763	30.0	7243	1628	2040	459	5475	1231	1224	275	4.1	2.77	2.9	1.94	7	3	3
840	33.1	7898	1775	2040	459	5975	1343	1224	275	4.5	3.05	3.2	2.13	7	3	3
917	36.1	8552	1922	2040	459	6476	1456	1224	275	5.0	3.33	3.5	2.33	7	3	3
994	39.1	9207	2070	2040	459	6976	1568	1224	275	5.4	3.61	3.8	2.53	7	3	3
1070	42.1	9853	2215	2040	459	7470	1679	1224	275	5.8	3.89	4.0	2.72	9	4	4
1147	45.2	10507	2362	2040	459	7971	1792	1224	275	6.2	4.17	4.3	2.91	9	4	4

Additional standard belt widths are available in steps of 76.8 mm (3.02 in). Additional non-standard belt widths are available in steps of 25.6 mm (1.01 in).

1454	57.2	13117	2949	2040	459	9966	2240	1224	275	7.9	5.29	5.5	3.69	11	10	5
------	------	-------	------	------	-----	------	------	------	-----	-----	------	-----	------	----	----	---

General belt tolerance is +0/-0.4% at 23°C/73°F. For exact belt width contact Customer Service. Non standard belt width on request.

*Max. Load per Drive Sprocket. Belt material: POM-D 1000 N (223 lbf), PP 550 N (123 lbf).

Belt needs support rollers or flanged rollers at each belt edge for support.

= Single Link

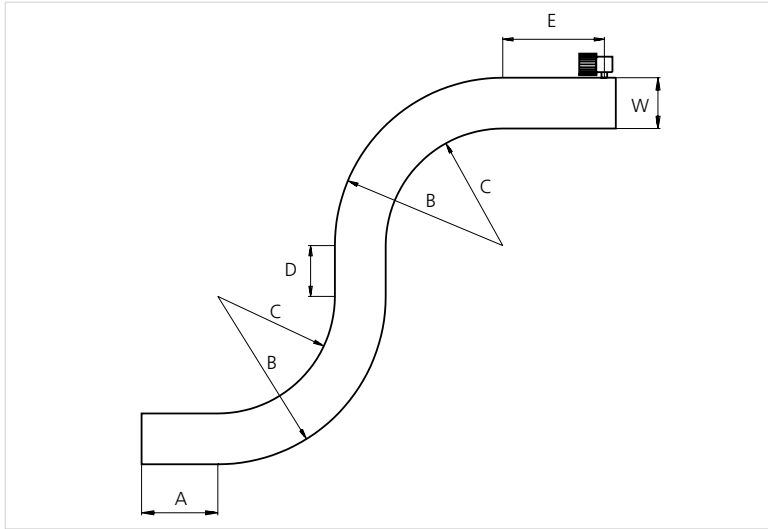


STANDARD

SIDE FLEXING

PITCH 25.4 MM/1.00 IN

Design Guidelines



uni Flex OSB 65% Open Radius 2.2	
A	min. 1.5 x W
B	min 3.2 x W
C	min 2.2 x W
D	min 2 x W
E	min 2 x W, min.
W	Belt width

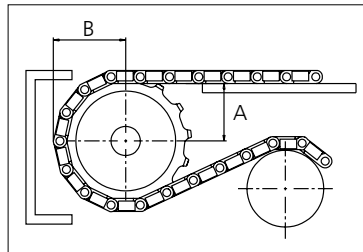
Sprocket

No. of teeth	Pilot Bore	Bore size												Overall diameter		Pitch diameter		Hub diameter		Dimension A		Dimension B		Single row/Two way	Double row/Two way	Molded PA6 LG	Machined PA6 N
		in	0.75	0.79	0.98	1.00	1.18	1.25	1.50	1.57	2.36	2.50	3.54														
		mm	19.1	20.0	25.0	25.4	30.0	31.8	38.1	40.0	60.0	63.5	90.0	mm	in	mm	in	mm	in	mm	in						
Z09	x			●	●	●	●					75	2.95	74.3	2.93	57.8	2.28	28.9	1.14	43.1	1.70	x			x		
Z12	x			●	●	●	●	■				100	3.94	98.1	3.86	82.8	3.26	41.4	1.63	55.1	2.17	x			x		
Z15	x				●	●	●	■	●	■		124.6	4.91	122.2	4.81	107.4	4.23	53.8	2.12	67.1	2.64	x			x		
Z18	x					●	●	●	●	■	■	149.3	5.88	146.3	5.76	132.1	5.20	66.0	2.60	79.2	3.12	x			x		

■ Machined sprocket



● Machined sprocket



Non standard material and color: See uni Material and Color Overview.

Other sprocket sizes are available upon request
 Two-part sprocket are available upon request
 Other bore sizes are available upon request
 uni Retainer Rings: See uni Retainer Ring data sheet
 Width of tooth = 14.0 mm (0.55 in)
 Width of sprocket = 30.0 mm (1.18 in)

Max. load per sprocket shown does not take bore size into account.
 Please also ensure that sufficient size shaft is chosen for corresponding load.

For correct sprocket position: See uni Assembly Instructions for uni Flex OSB.
 For more detailed sprocket information, contact Customer Service.

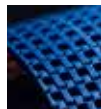
uni Flex OSB 60% Open Radius 2.2/1406



Conveyor Belts



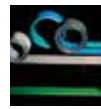
Seamless Belts



Modular Belts



Timing Belts



Transmission Belts



Fabrication & service

Solid advice
 For all your belting needs
 Local stock & service
www.ammeraalbeltech.com

Ammeraal Beltech Modular A/S
 Hjulmagervej 21
 DK-7100 Vejle

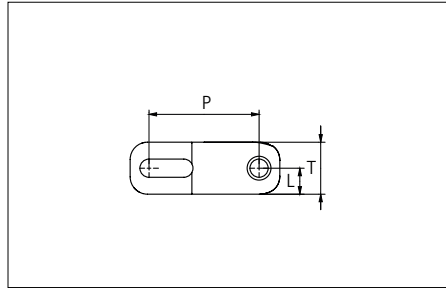
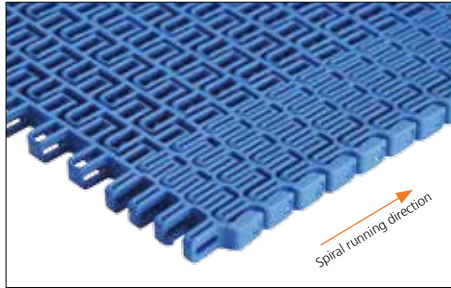
T +45 7572 3100
 F +45 7572 3348
 admin@unichains.com
 www.unichains.com

This information is subject to alteration due to continuous development. Ammeraal Beltech will not be held liable for the incorrect use of the above stated information. This information replaces previous information. All activities performed and services rendered by Ammeraal Beltech are subject to general terms and conditions of sale and delivery, as applied by its operating companies.



Plastic Modular Belt

Series **uni Flex OSB** Type **60% Open Radius 2.5/3.0/3.5/4.0**



Sideflexing belt
 Nominal pitch: 25.4 mm (1.00 in)
 Surface type: Open
 Surface opening: 60%
 Backflex radius: 30.0 mm (1.18 in)
 Pin diameter: 4.0 mm (0.16 in)
 Min. inside radius:
 2.5 / 3.0 / 3.5 / 4.0 x belt width

Recommended Belt material & color	POM-D B	mm	in		mm	in	
		P (Nominal)	25.4	1.00	T	12.0	0.47
Recommended Pin material & color	PA6.6 B	L	6.0	0.24	-	-	-

Other non standard material and color: See uni Material and Color Overview.
 Alternative pin and lock: Snap Pin A2

Belt width		Permissible tensile force (Belt/pin material)								Belt weight (Belt/pin material)				*Min. No. drive sprocket per shaft	Number of wear strips (Min. No.)	
		POM-D/PA6.6				PP/PA6.6				POM-D/PA6.6		PP/PA6.6			Carry (pcs)	Return (pcs)
		Straight sections		Curve sections		Straight sections		Curve sections		kg/m	lb/ft	kg/m	lb/ft			
mm	in	N	lbf	N	lbf	N	lbf	N	lbf	kg/m	lb/ft	kg/m	lb/ft			
303	11.9	3333	749	2040	459	2485	559	1224	275	1.6	1.10	1.1	0.77	3	2	2
379	14.9	3979	894	2040	459	2979	670	1224	275	2.1	1.38	1.4	0.96	3	2	2
456	18.0	4634	1042	2040	459	3479	782	1224	275	2.5	1.66	1.7	1.16	5	2	2
533	21.0	5288	1189	2040	459	3980	895	1224	275	2.9	1.94	2.0	1.35	5	2	2
610	24.0	5943	1336	2040	459	4480	1007	1224	275	3.3	2.22	2.3	1.55	5	3	3
686	27.0	6589	1481	2040	459	4974	1118	1224	275	3.7	2.49	2.6	1.74	5	3	3
763	30.0	7243	1628	2040	459	5475	1231	1224	275	4.1	2.77	2.9	1.94	7	3	3
840	33.1	7898	1775	2040	459	5975	1343	1224	275	4.5	3.05	3.2	2.13	7	3	3
917	36.1	8552	1922	2040	459	6476	1456	1224	275	5.0	3.33	3.5	2.33	7	3	3
994	39.1	9207	2070	2040	459	6976	1568	1224	275	5.4	3.61	3.8	2.53	7	3	3
1070	42.1	9853	2215	2040	459	7470	1679	1224	275	5.8	3.89	4.0	2.72	9	4	4
1147	45.2	10507	2362	2040	459	7971	1792	1224	275	6.2	4.17	4.3	2.91	9	4	4

Additional standard belt widths are available in steps of 76.8 mm (3.02 in). Additional non-standard belt widths are available in steps of 25.6 mm (1.01 in).

1454	57.2	13117	2949	2040	459	9966	2240	1224	275	7.9	5.29	5.5	3.69	11	10	5
------	------	-------	------	------	-----	------	------	------	-----	-----	------	-----	------	----	----	---

General belt tolerance is +0/-0.4% at 23°C/73°F. For exact belt width contact Customer Service. Non standard belt width on request.

*Max. Load per Drive Sprocket. Belt material: POM-D 1000 N (223 lbf), PP 550 N (123 lbf).

Belt needs support rollers or flanged rollers at each belt edge for support.

= Single Link



NON STANDARD

SIDE FLEXING

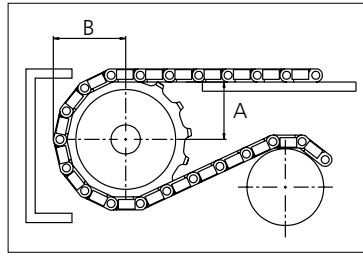
PITCH 25.4 MM/1.00 IN

Sprocket

No. of teeth	Bore size													Overall diameter		Pitch diameter		Hub diameter		Dimension A		Dimension B		Single row/Two way	Double row/Two way	Molded	Machined
	Pilot Bore	in	0.75	0.79	0.98	1.00	1.18	1.25	1.50	1.57	2.36	2.50	3.54														
	mm	19.1	20.0	25.0	25.4	30.0	31.8	38.1	40.0	60.0	63.5	90.0	mm	in	mm	in	mm	in	mm	in	PA6 LG	PA6 N					
Z09	x			●	●	●	●					75	2.95	74.3	2.93	57.8	2.28	28.9	1.14	43.1	1.70	x			x		
Z12	x			●	●	●	●	■				100	3.94	98.1	3.86	82.8	3.26	41.4	1.63	55.1	2.17	x			x		
Z15	x			●	●	●	■	■	■			124.6	4.91	122.2	4.81	107.4	4.23	53.8	2.12	67.1	2.64	x			x		
Z18	x					●	●	●	●	■		149.3	5.88	146.3	5.76	132.1	5.20	66.0	2.60	79.2	3.12	x			x		

■ Machined sprocket

● Machined sprocket



Non standard material and color: See uni Material and Color Overview.

Other sprocket sizes are available upon request
 Two-part sprocket are available upon request
 Other bore sizes are available upon request
 uni Retainer Rings: See uni Retainer Ring data sheet
 Width of tooth = 14.0 mm (0.55 in)
 Width of sprocket = 30.0 mm (1.18 in)

Max. load per sprocket shown does not take bore size into account.
 Please also ensure that sufficient size shaft is chosen for corresponding load.

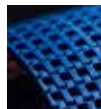
For correct sprocket position: See uni Assembly Instructions for uni Flex OSB.
 For more detailed sprocket information, contact Customer Service.



Conveyor Belts



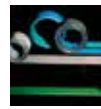
Seamless Belts



Modular Belts



Timing Belts



Transmission Belts



Fabrication & service

Solid advice
 For all your belting needs
 Local stock & service
www.ammeraalbeltech.com

Ammeraal Beltech Modular A/S
 Hjulmagervej 21
 DK-7100 Vejle

T +45 7572 3100
 F +45 7572 3348
 admin@unichains.com
 www.unichains.com

This information is subject to alteration due to continuous development. Ammeraal Beltech will not be held liable for the incorrect use of the above stated information. This information replaces previous information. All activities performed and services rendered by Ammeraal Beltech are subject to general terms and conditions of sale and delivery, as applied by its operating companies.

Local Contacts

Austria

T +43 171728 133
info-de@ammeraalbeltech.com
www.ammeraalbeltech.at

Belgium

T +32 2 466 03 00
info-be@ammeraalbeltech.com
www.ammeraalbeltech.be

Canada

T +1 905 890 1311
info-ca@ammeraalbeltech.com
www.ammeraalbeltech.com

Chile

T +56 2 233 12900
info-cl@ammeraalbeltech.com
www.ammeraalbeltech.cl

China

T +86 512 8287 2709
info-cn@ammeraalbeltech.com
www.ammeraalbeltech.com.cn

Czech Republic

T +420 567 117 211
info-cz@ammeraalbeltech.com
www.ammeraalbeltech.cz

Denmark

T + 45 7572 3100
info-dk@ammeraalbeltech.com
www.unichains.com

Finland

T +358 207 911 400
info-fi@ammeraalbeltech.com
www.ammeraalbeltech.fi

France

T +33 3 20 90 36 00
info-fr@ammeraalbeltech.com
www.ammeraalbeltech.fr

Germany

T +49 4152 937-0
info-de@ammeraalbeltech.com
www.ammeraalbeltech.de

Hungary

T +36 30 311 6099
info-hu@ammeraalbeltech.com
www.ammeraalbeltech.hu

India

T +91 44 265 34 244
info-in@ammeraalbeltech.com
www.ammeraalbeltech.com

Italy

T +39 051 660 60 06
info-it@ammeraalbeltech.com
www.ammeraalbeltech.it

Luxembourg

T +352 26 48 38 56
info-lu@ammeraalbeltech.com
www.ammeraal-beltech.lu

Malaysia

T +60 3 806 188 49
info-my@ammeraalbeltech.com
www.ammeraalbeltech.com

Netherlands

T +31 72 57 51212
info-nl@ammeraalbeltech.com
www.ammeraalbeltech.nl

Poland

T +48 32 44 77 179
info-pl@ammeraalbeltech.com
www.ammeraalbeltech.com

Portugal

T +351 22 947 94 40
info-pt@ammeraalbeltech.com
www.ammeraalbeltech.pt

Singapore

T +65 62739767
info-sg@ammeraalbeltech.com
www.ammeraalbeltech.com

Slovakia

T +421 2 55648541-2
info-sk@ammeraalbeltech.com
www.ammeraalbeltech.sk

South Korea

T +82 31 448 3613-7
info-kr@ammeraalbeltech.com
www.ammeraalbeltech.co.kr

Spain

T +34 93 718 3054
info-es@ammeraalbeltech.com
www.ammeraalbeltech.es

Sweden

T +46 44 780 3010
info-se@ammeraalbeltech.com
www.ammeraalbeltech.se

Switzerland

T +41 55 2253 535
info-ch@ammeraalbeltech.com
www.ammeraalbeltech.ch

Thailand

T +66 2 902 2604-13
info-th@ammeraalbeltech.com
www.ammeraalbeltech.com

United Kingdom

T +44 1992 500550
info-uk@ammeraalbeltech.com
www.ammeraalbeltech.co.uk

United States

T +1 847 673 6720
info-us@ammeraalbeltech.com
www.ammeraalbeltech.com

Vietnam

T +84 8 376 562 05
info-vn@ammeraalbeltech.com
www.ammeraalbeltech.com.vn

Global Headquarters:

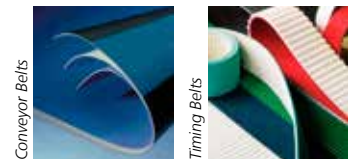
Ammeraal Beltech Holding B.V.

P.O. Box 38
1700 AA Heerhugowaard
The Netherlands

T +31 (0)72 575 1212
F +31 (0)72 571 6455

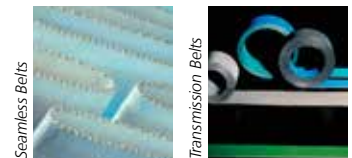
info@ammeraalbeltech.com
www.ammeraalbeltech.com

Expert advice, quality solutions
and local service
for all your belting needs



Conveyor Belts

Timing Belts



Seamless Belts

Transmission Belts



Modular Belts

Fabrication & service

... and 150 more service contact points on www.ammeraalbeltech.com