

Ammeraal Beltech Modular

Innovative belt and chain solutions
for every industry & application



Content

uni L-SNB 36%

page 3 - 6

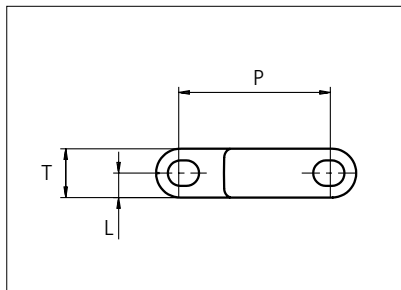
uni L-SNB 36% Rib

page 7 - 10



Plastic Modular Belt

Serie **uni L-SNB** Type **36%**



Straight Running
 Nominal pitch: 50.0 mm (1.97 in)
 Surface type: Flat
 Surface opening: 36%
 Backflex radius: 70.0 mm (2.80 in)
 Pin diameter: 8.0 mm (0.31 in)

Belt material & color	PP W	PP N	mm	in	mm	in		
	Pin and lock material & color	PP W PP W	PP W PP N	P (Nominal)	50.0	1.97	L	8.0
			T	16.0	0.63	-	-	-

Non standard material and color: See uni Material and Color Overview.

Alternative pin and lock materials: Pin: PE **W** SS304 PP **G**

Belt width		Permissible tensile force (Belt/pin material)		Belt weight (Belt/pin material)		*Min. No. drive sprocket per shaft	Number of wear strips (Min. No.)	
		PP		PP			**Carry (pcs)	**Return (pcs)
mm	in	N	lbf	kg/m	lb/ft			
153	6.0	2678	602	1.5	1.01	2	2	2
229	9.0	4009	901	2.2	1.51	2	2	2
305	12.0	5340	1200	3.0	2.01	3	3	2
381	15.0	6671	1500	3.7	2.51	3	3	2
457	18.0	8003	1799	4.5	3.01	4	4	2
533	21.0	9334	2098	5.2	3.51	4	4	2
609	24.0	10665	2398	6.0	4.01	5	5	3
686	27.0	11996	2697	6.7	4.51	5	5	3
762	30.0	13328	2996	7.5	5.02	6	6	3
838	33.0	14659	3295	8.2	5.52	6	6	3
914	36.0	15990	3595	9.0	6.02	7	7	4
990	39.0	17322	3894	9.7	6.52	7	7	4

Additional standard belt widths are available in steps of 76.1 mm (3.00 in).

1980	78.0	34650	7789	19.4	13.04	14	14	7
------	------	-------	------	------	-------	----	----	---

Additional standard belt widths are available in steps of 76.1 mm (3.00 in).

2969	116.9	51958	11680	29.1	19.55	20	20	10
------	-------	-------	-------	------	-------	----	----	----

General belt tolerance is +0/-0.4% at 23°C/73°F and 50% RH. For exact belt width contact Customer Service. Non standard belt width on request.

*Max. Load per Drive Sprocket. Belt material PP with snub roller 2000 N (450 lbf), PP without snub roller 1250 N (281 lbf)

**Max. Spacing between wear strips, Carry: 152 mm (6 in); Return: 304 mm (12 in)

***Load capacity per row of reinforcement links in the belt: 2500 N (562 lbf)

***Example: Belt with 8 rows of reinforcement links, permissible load is 8 x 2500 N (562 lbf) = 20000 N (4496 lbf)

= Single Link



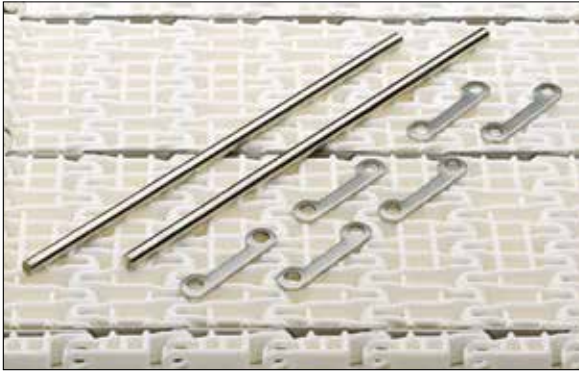
STANDARD

STRAIGHT RUNNING

PITCH 50.0 MM/1.97 IN

Accessories

Reinforcement Link



The use of uni-chains belts with the SS reinforcement /pitch control links in blanchers, cookers and other high temperature applications will reduce belt elongation due to temperature by more than 90%. This will simplify the belt take-up system and reduce maintenance.

uni-chains recommends three reinforcement links per K1200 module.

Note: Reinforcement links require the use of SS pins.

Type	Material & color	N/row	Lbf/row
Steel Link	SS316	2500	562

Non Standard material and color: See uni Material and Color Overview.

Sprocket

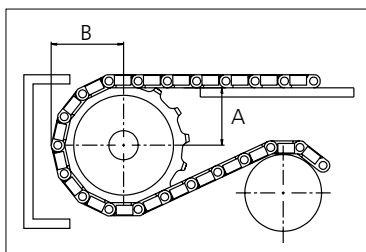
No of teeth	Bore size													Overall diameter		Pitch-diameter		Hub-diameter		A-dimension		B-dimension		Single row/One way	Double row/Two way	Material	
	Pilot bore		0.75	0.78	0.98	1.00	1.18	1.25	1.50	1.57	2.36	2.50	3.54													mm	in
	mm	in												PA6	PA6 LG												
Z06	x						●	●	■	●				92.5	3.64	100.0	3.94	70.0	2.76	35.3	1.39	58.0	2.28	x		x	
Z08	x						●	●	■	●				128.7	5.07	130.7	5.15	70.0	2.76	52.4	2.06	73.3	2.89	x		x	
Z10	x						●	●	■	●				159.8	6.29	161.8	6.37	70.0	2.76	68.9	2.71	88.9	3.50	x		x	
Z10												■		159.8	6.29	161.8	6.37	120.0	4.72	68.9	2.71	88.9	3.50	x			x
Z12	x						●		■	●				192.5	7.58	193.2	7.61	70.0	2.76	85.3	3.36	104.6	4.12	x		x	
Z12												■		192.5	7.58	193.2	7.61	120.0	4.72	85.3	3.36	104.6	4.12	x			x
Z16	x						●	■	●			■		257.3	10.13	256.3	10.09	120.0	4.72	117.7	4.63	126.1	4.96	x			x

■ Molded sprocket

● Molded sprocket

■ Machined sprocket

● Machined sprocket



Non standard material and color: See uni Material and Color Overview.

Other sprocket sizes are available upon request.
 Two-part sprocket are available upon request.
 Round bores are always delivered with keyway.
 Other bore sizes are available upon request.
 uni Retainer Rings: See uni Retainer Ring data sheet
 Width of tooth = 7.0 mm (0.28 in)
 Width of sprocket = 42.3 mm (1.67 in)

Max load per sprocket shown does not take bore size into account.
 Please also ensure that sufficient size shaft is chosen for corresponding load.

For correct sprocket position: See uni Assembly Instructions for uni L-SNB.
 For more detailed sprocket information, contact Customer Service.



Conveyor Belts



Seamless Belts



Modular Belts



Timing Belts



Transmission Belts



Fabrication & service

Expert advice, quality solutions
and local service
for all your belting needs
www.ammeraalbeltech.com

Ammeraal Beltech Modular A/S
Hjulmagervej 21
DK-7100 Vejle

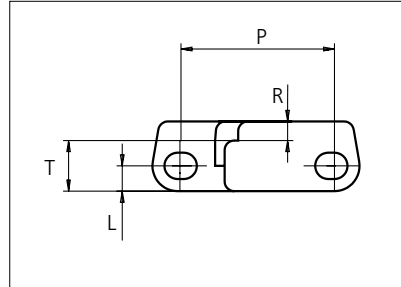
T +45 7572 3100
F +45 7572 3348
admin@unichains.com
www.unichains.com

This information is subject to alteration due to continuous development. Ammeraal Beltech will not be held liable for the incorrect use of the above stated information. This information replaces previous information. All activities performed and services rendered by Ammeraal Beltech are subject to general terms and conditions of sale and delivery, as applied by its operating companies.



Plastic Modular Belt

Serie **uni L-SNB** Type **Rib 36%**



Straight running belt
 Nominal pitch: 50.0 mm (1.97 in)
 Surface type: Rib Top
 Surface opening: 36%
 Backflex radius: 140.0 mm (5.50 in)
 Pin diameter: \varnothing 8.0 mm (0.31 in)

STANDARD

Belt material & color	POM-LF BR	PP G	PP-HW LB	mm	in	mm	in		
Pin and lock material & color	PP W	PP G	PP-HW LB	P (Nominal)	50.0	1.97	T	16.0	0.63
				R	6.0	0.23	L	8.0	0.31

Non standard material and color: See uni Material and Color Overview.

Alternative pin and lock materials: Pin: PE **W** SS304

Belt width		Permissible tensile force (Belt/pin material)				Belt weight (Belt/pin material)				*Min. No. drive sprocket per shaft	Number of wear strips (Min. No.)	
		PP/PP		POM/LF-PP		PP/PP		POM/LF-PP			**Carry (pcs)	**Return (pcs)
mm	in	N	lbf	N	lbf	kg/m	lb/ft	kg/m	lb/ft			
153	6.0	4559	1025	8415	1892	1.5	1.01	2.3	1.52	2	2	2
229	9.0	6826	1535	12599	2832	2.2	1.51	3.4	2.28	2	2	2
305	12.0	9093	2044	16783	3773	3.0	2.01	4.5	3.04	3	3	2
381	15.0	11360	2554	20967	4713	3.7	2.51	5.6	3.79	3	3	2
457	18.0	13627	3063	25151	5654	4.5	3.01	6.8	4.55	4	4	2
533	21.0	15894	3573	29335	6595	5.2	3.51	7.9	5.31	4	4	2
609	24.0	18161	4083	33519	7535	6.0	4.01	9.0	6.06	5	5	3
686	27.0	20428	4592	37703	8476	6.7	4.51	10.1	6.82	5	5	3
762	30.0	22695	5102	41887	9416	7.5	5.02	11.3	7.57	6	6	3
838	33.0	24962	5611	46071	10357	8.2	5.52	12.4	8.33	6	6	3
914	36.0	27229	6121	50255	11297	9.0	6.02	13.5	9.09	7	7	4
990	39.0	29496	6631	54439	12238	9.7	6.52	14.6	9.84	7	7	4

Additional standard belt widths are available in steps of 76.1 mm (3.00 in.)

1980	78.0	59004	13264	108900	24481	19.4	13.04	29.3	19.69	14	14	7
------	------	-------	-------	--------	-------	------	-------	------	-------	----	----	---

Additional standard belt widths are available in steps of 76.1 mm (3.00 in.)

2969	116.9	88476	19889	163295	36709	29.1	19.55	43.9	29.53	20	20	10
------	-------	-------	-------	--------	-------	------	-------	------	-------	----	----	----

General belt tolerance is +0/-0.4% at 23°C/73°F and 50% RH. For exact belt width contact Customer Service. Non standard belt width on request.

*Max. Load per Drive Sprocket. Belt material: PP-HW with snub roller 2000 N (450 lbf), PP-HW without snub roller 1250 N (281 lbf)

**Max. Spacing between wear strips, Carry: 152 mm (6 in.) ; Return: 304 mm (12 in.)

***Load capacity per row of reinforcement links in the belt: 2500 N (562 lbf)

***Example: Belt with 8 rows of reinforcement links, permissible load is 8 x 2500 N (562 lbf) = 20000 N (4496 lbf)

= Single Link



STRAIGHT RUNNING

PITCH 50.0 MM/1.97 IN

Accessories

Reinforcement Link



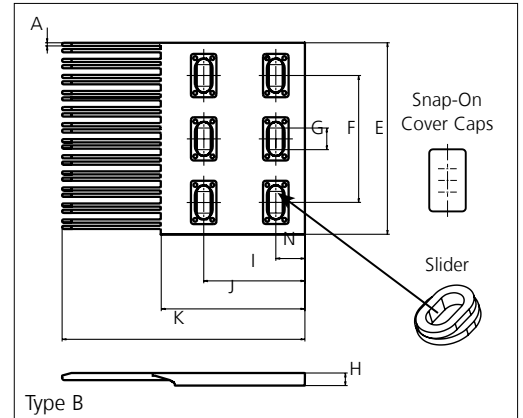
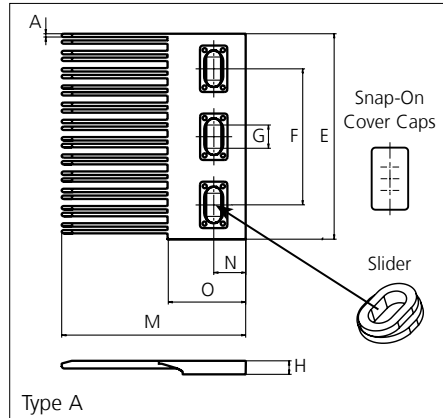
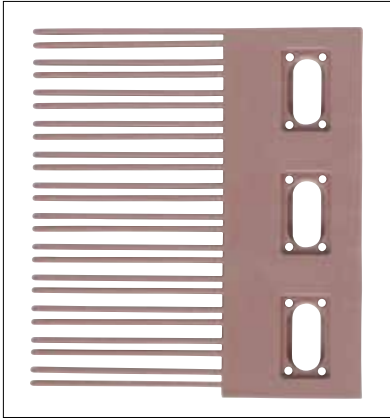
The use of uni-chains belts with the SS reinforcement /pitch control links in blanchers, cookers and other high temperature applications will reduce belt elongation due to temperature by more than 90%. This will simplify the belt take-up system and reduce maintenance. uni-chains recommends three reinforcement links per K1200 module.
Note: Reinforcement links require the use of SS pins.

Type	Material & color	N/row	Lbf/row
Steel Link	SS316	2500	562

Non Standard material and color: See uni Material and Color Overview.

Accessories

Finger Plates



Type	Material & color	A		E		F		G							
		mm	in	mm	in	mm	in	mm	in						
Single Sided 150x149	POM-LF BR POM-DI G	2.5	0.10	152.1	5.99	100.3	3.95	12.0	0.47						
Single Sided 120x149															
		H		I		J		K		M		N		O	
		mm	in	mm	in	mm	in	mm	in	mm	in	mm	in	mm	in
		10.0	0.39	80.0	3.15	114.0	4.49	192.0	7.56	135.0	5.31	23.0	0.91	57.0	6.18

All uni-chains belt systems are available in a raised rib version that can be supplied with matching finger plates, also called combs.

The finger plates are supplied with cover caps which can be attached when the finger plate has been installed. The cover caps can be removed by using a screwdriver that can be inserted between the cover and finger plate. In order to adjust to belt width variations caused by temperature fluctuations, a slider facilitates the sideways movement of the finger plates.

Non Standard material and color: See uni Material and Color Overview.

Sprocket

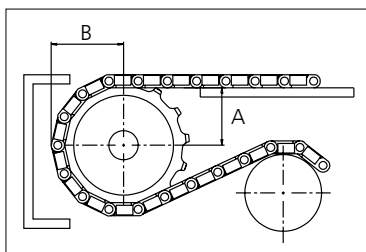
No of teeth	Bore size													Overall diameter		Pitch-diameter		Hub-diameter		A-dimension		B-dimension		Single row/One way	Double row/Two way	Material		
	Pilot bore	mm	in	0.75	0.78	0.98	1.00	1.18	1.25	1.50	1.57	2.36	2.50													3.54	mm	in
														PA6	PA6 LG													
Z06	x							●	●	■	●				92.5	3.64	100.0	3.94	70.0	2.76	35.3	1.39	58.0	2.28	x		x	
Z08	x							●	●	■	●				128.7	5.07	130.7	5.15	70.0	2.76	52.4	2.06	73.3	2.89	x		x	
Z10	x							●	●	■	●				159.8	6.29	161.8	6.37	70.0	2.76	68.9	2.71	88.9	3.50	x		x	
Z10													■	159.8	6.29	161.8	6.37	120.0	4.72	68.9	2.71	88.9	3.50	x			x	
Z12	x							●		■	●				192.5	7.58	193.2	7.61	70.0	2.76	85.3	3.36	104.6	4.12	x		x	
Z12													■	192.5	7.58	193.2	7.61	120.0	4.72	85.3	3.36	104.6	4.12	x			x	
Z16	x							●	■	●			■	257.3	10.13	256.3	10.09	120.0	4.72	117.7	4.63	126.1	4.96	x			x	

■ Molded sprocket

● Molded sprocket

■ Machined sprocket

● Machined sprocket



Other sprocket sizes are available upon request.
 Two-part sprocket are available upon request.
 Round bores are always delivered with keyway.
 Other bore sizes are available upon request.
 uni Retainer Rings: See uni Retainer Ring data sheet
 Width of tooth = 7.0 mm (0.28 in)
 Width of sprocket = 42.3 mm (1.67 in)

Max load per sprocket shown does not take bore size into account.
 Please also ensure that sufficient size shaft is chosen for corresponding load.

For correct sprocket position: See uni Assembly Instructions for uni L-SNB.
 For more detailed sprocket information, contact Customer Service.

Non standard material and color: See uni Material and Color Overview.



Conveyor



Seamless



Modular



Timing



Transmission



Fabrication & service

Solid advice
For all your belting needs
Local stock & service
www.ammeraalbeltech.com

Ammeraal Beltech Modular A/S
 Hjulmagervej 21
 DK-7100 Vejle

T +45 7572 3100
 F +45 7572 3348
 admin@unichains.com
 www.unichains.com

This information is subject to alteration due to continuous development. Ammeraal Beltech will not be held liable for the incorrect use of the above stated information. This information replaces previous information. All activities performed and services rendered by Ammeraal Beltech are subject to general terms and conditions of sale and delivery, as applied by its operating companies.

Local Contacts

Austria

T +43 171728 133
info-de@ammeraalbeltech.com
www.ammeraalbeltech.at

Belgium

T +32 2 466 03 00
info-be@ammeraalbeltech.com
www.ammeraalbeltech.be

Canada

T +1 905 890 1311
info-ca@ammeraalbeltech.com
www.ammeraalbeltech.com

Chile

T +56 2 233 12900
info-cl@ammeraalbeltech.com
www.ammeraalbeltech.cl

China

T +86 512 8287 2709
info-cn@ammeraalbeltech.com
www.ammeraalbeltech.com.cn

Czech Republic

T +420 567 117 211
info-cz@ammeraalbeltech.com
www.ammeraalbeltech.cz

Denmark

T + 45 7572 3100
info-dk@ammeraalbeltech.com
www.unichains.com

Finland

T +358 207 911 400
info-fi@ammeraalbeltech.com
www.ammeraalbeltech.fi

France

T +33 3 20 90 36 00
info-fr@ammeraalbeltech.com
www.ammeraalbeltech.fr

Germany

T +49 4152 937-0
info-de@ammeraalbeltech.com
www.ammeraalbeltech.de

Hungary

T +36 30 311 6099
info-hu@ammeraalbeltech.com
www.ammeraalbeltech.hu

India

T +91 44 265 34 244
info-in@ammeraalbeltech.com
www.ammeraalbeltech.com

Italy

T +39 051 660 60 06
info-it@ammeraalbeltech.com
www.ammeraalbeltech.it

Luxembourg

T +352 26 48 38 56
info-lu@ammeraalbeltech.com
www.ammeraal-beltech.lu

Malaysia

T +60 3 806 188 49
info-my@ammeraalbeltech.com
www.ammeraalbeltech.com

Netherlands

T +31 72 57 51212
info-nl@ammeraalbeltech.com
www.ammeraalbeltech.nl

Poland

T +48 32 44 77 179
info-pl@ammeraalbeltech.com
www.ammeraalbeltech.com

Portugal

T +351 22 947 94 40
info-pt@ammeraalbeltech.com
www.ammeraalbeltech.pt

Singapore

T +65 62739767
info-sg@ammeraalbeltech.com
www.ammeraalbeltech.com

Slovakia

T +421 2 55648541-2
info-sk@ammeraalbeltech.com
www.ammeraalbeltech.sk

South Korea

T +82 31 448 3613-7
info-kr@ammeraalbeltech.com
www.ammeraalbeltech.co.kr

Spain

T +34 93 718 3054
info-es@ammeraalbeltech.com
www.ammeraalbeltech.es

Sweden

T +46 44 780 3010
info-se@ammeraalbeltech.com
www.ammeraalbeltech.se

Switzerland

T +41 55 2253 535
info-ch@ammeraalbeltech.com
www.ammeraalbeltech.ch

Thailand

T +66 2 902 2604-13
info-th@ammeraalbeltech.com
www.ammeraalbeltech.com

United Kingdom

T +44 1992 500550
info-uk@ammeraalbeltech.com
www.ammeraalbeltech.co.uk

United States

T +1 847 673 6720
info-us@ammeraalbeltech.com
www.ammeraalbeltech.com

Vietnam

T +84 8 376 562 05
info-vn@ammeraalbeltech.com
www.ammeraalbeltech.com.vn

Global Headquarters:

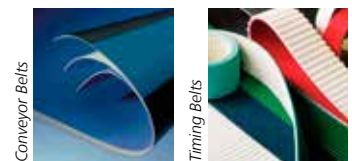
Ammeraal Beltech Holding B.V.

P.O. Box 38
1700 AA Heerhugowaard
The Netherlands

T +31 (0)72 575 1212
F +31 (0)72 571 6455

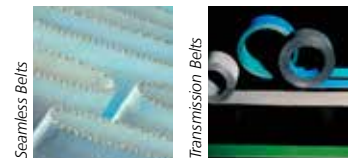
info@ammeraalbeltech.com
www.ammeraalbeltech.com

Expert advice, quality solutions
and local service
for all your belting needs



Conveyor Belts

Timing Belts



Seamless Belts

Transmission Belts



Modular Belts

Fabrication & service

... and 150 more service contact points on www.ammeraalbeltech.com