

# Ammeraal Beltech Modular

Innovative belt and chain solutions  
for every industry & application



# Content

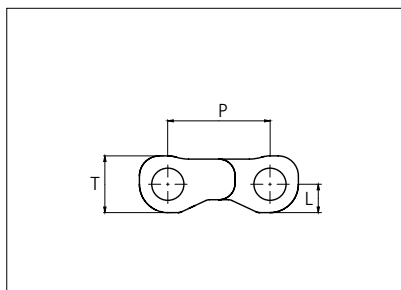
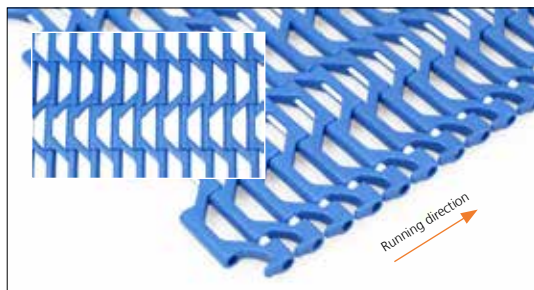
uni M-OWL

page 3 - 4



# Plastic Modular Belt

Series **uni M-OWL** Type **40% Open**



Straight Running  
 Nominal pitch: 12.7 mm (0.50 in)  
 Contact area: 8%  
 Surface opening: 40%  
 Backflex radius: 12.5 mm (0.49 in)  
 Pin diameter: 4 mm (0.16 in)  
 Largest opening: 7.6 x 23 mm  
 (0.30 x 0.91 in)

<b>Belt material &amp; color</b>	POM-D <b>B</b> <b>W</b>		<b>mm</b>	<b>in</b>		<b>mm</b>	<b>in</b>
<b>Pin material &amp; color</b>	PP <b>W</b>	<b>P (Nominal)</b>	12.7	0.50	<b>T</b>	7.2	0.28
		<b>L</b>	3.6	0.14	-	-	-

Non standard material and color: See uni Material and Color Overview.

Alternative pin materials: Lockpin: PA6.6 **B**

Belt width		Permissible tensile force (Belt material)		Belt weight (Belt material)		*Min. No. drive sprocket per shaft	Number of wear strips (Min. No.)	
		POM-D		POM-D			**Carry (pcs)	**Return (pcs)
mm	in	N	lbf	kg/m	lb/ft			
203	8.0	914	205	0.9	0.59	2	2	2
254	10.0	1143	257	1.1	0.74	3	2	2
305	12.0	1373	309	1.3	0.89	4	3	2
356	14.0	1602	360	1.5	1.04	4	3	2
407	16.0	1832	412	1.8	1.18	5	3	2
457	18.0	2057	462	2.0	1.33	5	4	2
508	20.0	2286	514	2.2	1.48	5	4	2
559	22.0	2516	565	2.4	1.63	6	4	2
610	24.0	2745	617	2.6	1.78	7	5	3
660	26.0	2970	668	2.9	1.92	7	5	3
711	28.0	3200	719	3.1	2.07	7	5	3
762	30.0	3429	771	3.3	2.22	8	6	3

Additional standard belt widths are available in steps of 50.7 mm (2.00 in).

1980	78.0	8910	2003	8.6	5.76	20	14	7
------	------	------	------	-----	------	----	----	---

Additional standard belt widths are available in steps of 50.7 mm (2.00 in).

2996	118.0	13482	3031	13.0	8.72	30	20	10
------	-------	-------	------	------	------	----	----	----

General belt tolerance is +0/-0.4% at 23°C/73°F and 50% RH. For exact belt width contact Customer Service.

\*Max. Load per Drive Sprocket. Belt material: POM-D with snub roller 1000 N (450 lbf) without snub roller 500 N (281 lbf).

\*\*Max. Spacing between wear strips, Carry: 152 mm (6 in); Return: 304 mm (12 in).

= Single Link



STANDARD

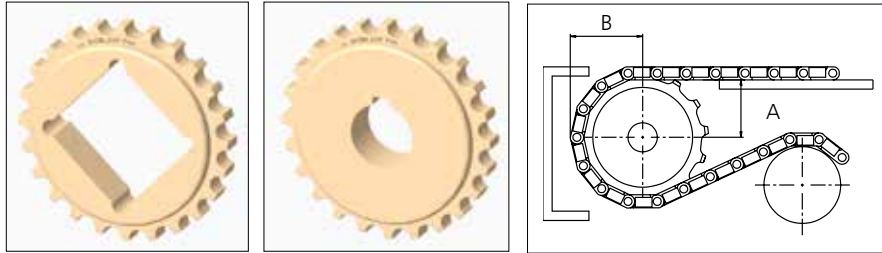
STRAIGHT RUNNING

PITCH 12.7 MM/0.50 IN

## Sprocket

No. of teeth	Bore size													Overall diameter		Pitch-diameter		Hub-diameter		A-dimension		B-dimension		Single row/Two way	Double row/Two way	Molded PA6 LG	Machined PA6 N
	Pilot bore		in	0.75	0.78	0.98	1.00	1.18	1.25	1.50	1.57	2.36	2.50														
	mm	19.1	20.0	25.0	25.4	30.0	31.8	38.1	40.0	60.0	63.5	90.0	mm	in	mm	in	mm	in	mm	in							
Z14	x		●	●●								61.4	2.42	58.0	2.28	44.9	1.77	24.73	0.97	32.7	1.29	x			x		
Z17	x			●●								73.6	2.90	70.2	2.76	57.1	2.25	30.98	1.22	38.79	1.53	x			x		
Z19	x			●					●●	●●		81.8	3.22	78.4	3.09	65.3	2.57	35.13	1.38	42.86	1.69	x			x		
Z24	x							●●	●●	●●		102.2	4.02	98.8	3.89	85.8	3.38	45.47	1.79	53.06	2.09	x			x		
Z36	x							●●	●●	●●		151.4	5.96	148	5.83	134.9	5.31	70.20	2.76	77.61	3.06	x			x		

■ Machined sprocket ● Machined sprocket



Non standard material and color: See uni Material and Color Overview.

### Nosebars Min. Dimensions

	mm	in
C	19.0	0.75
D	5.0	0.20
E	39.3	1.55

Other sprocket sizes are available upon request.  
 Two-part sprocket are available upon request.  
 Round bores are always delivered with keyway.  
 Other bore sizes are available upon request.  
 uni Retainer Rings: See uni Retainer Ring data sheet.  
 Width of tooth = 11.0 mm (0.43 in)  
 Width of sprocket = 20.0 mm (0.79 in)

Max load per sprocket shown does not take bore size into account.  
 Please also ensure that sufficient size shaft is chosen for corresponding load.

For correct sprocket position: See uni Assembly Instructions for uni M-OWL.  
 For more detailed sprocket information. contact Customer Service.

uni M-OWL M1 40% Open/151223



Expert advice, quality solutions and local service for all your belting needs  
[www.ammeraalbeltech.com](http://www.ammeraalbeltech.com)

**Ammeraal Beltech Modular A/S**  
 Hjulmagervej 21  
 DK-7100 Vejle

T +45 7572 3100  
 F +45 7572 3348  
 admin@unichains.com  
 www.unichains.com

This information is subject to alteration due to continuous development. Ammeraal Beltech will not be held liable for the incorrect use of the above stated information. This information replaces previous information. All activities performed and services rendered by Ammeraal Beltech are subject to general terms and conditions of sale and delivery, as applied by its operating companies.

# Local Contacts

## Austria

T +43 171728 133  
info-de@ammeraalbeltech.com  
www.ammeraalbeltech.at

## Belgium

T +32 2 466 03 00  
info-be@ammeraalbeltech.com  
www.ammeraalbeltech.be

## Canada

T +1 905 890 1311  
info-ca@ammeraalbeltech.com  
www.ammeraalbeltech.com

## Chile

T +56 2 233 12900  
info-cl@ammeraalbeltech.com  
www.ammeraalbeltech.cl

## China

T +86 512 8287 2709  
info-cn@ammeraalbeltech.com  
www.ammeraalbeltech.com.cn

## Czech Republic

T +420 567 117 211  
info-cz@ammeraalbeltech.com  
www.ammeraalbeltech.cz

## Denmark

T + 45 7572 3100  
info-dk@ammeraalbeltech.com  
www.unichains.com

## Finland

T +358 207 911 400  
info-fi@ammeraalbeltech.com  
www.ammeraalbeltech.fi

## France

T +33 3 20 90 36 00  
info-fr@ammeraalbeltech.com  
www.ammeraalbeltech.fr

## Germany

T +49 4152 937-0  
info-de@ammeraalbeltech.com  
www.ammeraalbeltech.de

## Hungary

T +36 30 311 6099  
info-hu@ammeraalbeltech.com  
www.ammeraalbeltech.hu

## India

T +91 44 265 34 244  
info-in@ammeraalbeltech.com  
www.ammeraalbeltech.com

## Italy

T +39 051 660 60 06  
info-it@ammeraalbeltech.com  
www.ammeraalbeltech.it

## Luxembourg

T +352 26 48 38 56  
info-lu@ammeraalbeltech.com  
www.ammeraal-beltech.lu

## Malaysia

T +60 3 806 188 49  
info-my@ammeraalbeltech.com  
www.ammeraalbeltech.com

## Netherlands

T +31 72 57 51212  
info-nl@ammeraalbeltech.com  
www.ammeraalbeltech.nl

## Poland

T +48 32 44 77 179  
info-pl@ammeraalbeltech.com  
www.ammeraalbeltech.com

## Portugal

T +351 22 947 94 40  
info-pt@ammeraalbeltech.com  
www.ammeraalbeltech.pt

## Singapore

T +65 62739767  
info-sg@ammeraalbeltech.com  
www.ammeraalbeltech.com

## Slovakia

T +421 2 55648541-2  
info-sk@ammeraalbeltech.com  
www.ammeraalbeltech.sk

## South Korea

T +82 31 448 3613-7  
info-kr@ammeraalbeltech.com  
www.ammeraalbeltech.co.kr

## Spain

T +34 93 718 3054  
info-es@ammeraalbeltech.com  
www.ammeraalbeltech.es

## Sweden

T +46 44 780 3010  
info-se@ammeraalbeltech.com  
www.ammeraalbeltech.se

## Switzerland

T +41 55 2253 535  
info-ch@ammeraalbeltech.com  
www.ammeraalbeltech.ch

## Thailand

T +66 2 902 2604-13  
info-th@ammeraalbeltech.com  
www.ammeraalbeltech.com

## United Kingdom

T +44 1992 500550  
info-uk@ammeraalbeltech.com  
www.ammeraalbeltech.co.uk

## United States

T +1 847 673 6720  
info-us@ammeraalbeltech.com  
www.ammeraalbeltech.com

## Vietnam

T +84 8 376 562 05  
info-vn@ammeraalbeltech.com  
www.ammeraalbeltech.com.vn

## Global Headquarters:

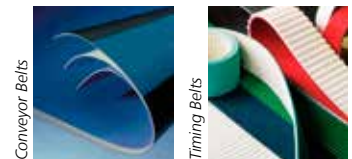
### Ammeraal Beltech Holding B.V.

P.O. Box 38  
1700 AA Heerhugowaard  
The Netherlands

T +31 (0)72 575 1212  
F +31 (0)72 571 6455

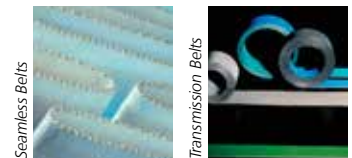
info@ammeraalbeltech.com  
www.ammeraalbeltech.com

Expert advice, quality solutions  
and local service  
for all your belting needs



Conveyor Belts

Timing Belts



Seamless Belts

Transmission Belts



Modular Belts

Fabrication & service

... and 150 more service contact points on [www.ammeraalbeltech.com](http://www.ammeraalbeltech.com)