

# Ammeraal Beltech Modular

Innovative belt and chain solutions  
for every industry & application



# Content

uni M-TTB 37%

page 3 - 6

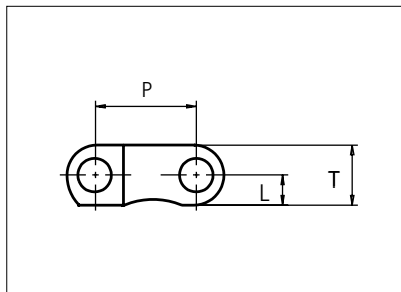
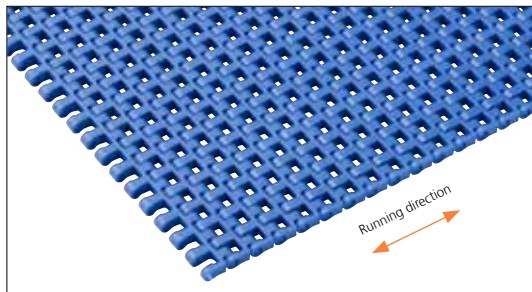
uni M-TTB CS 37%

page 7 - 10



# Plastic Modular Belt

Serie **uni M-TTB** Type **37%**



Straight Running  
 Nominal pitch: 12.7 mm (0.50 in)  
 Surface type: Flat  
 Surface opening: 37%  
 Backflex radius: 12.5 mm (0.49 in)  
 Min flex diameter (nosebar): 19.1 mm (0.75 in)  
 Pin diameter: 4.0 mm (0.16 in)

<b>Belt material &amp; color</b>	PP <span style="border: 1px solid black; padding: 0 2px;">W</span> <span style="border: 1px solid black; padding: 0 2px;">B</span> <span style="border: 1px solid black; padding: 0 2px;">G</span>	POM-D <span style="border: 1px solid black; padding: 0 2px;">W</span> <span style="border: 1px solid black; padding: 0 2px;">B</span>
<b>Pin material &amp; color</b>	PP <span style="border: 1px solid black; padding: 0 2px;">W</span>	PA6.6 <span style="border: 1px solid black; padding: 0 2px;">B</span>

	mm	in		mm	in
<b>P (Nominal)</b>	12.7	0.50	<b>T</b>	7.5	0.29
<b>L</b>	3.8	0.15	-	-	-

Non standard material and color: See uni Material and Color Overview.

Alternative pin material: PA6.6 B PP W

Belt width		Permissible tensile force (Belt/pin material)				Belt weight (Belt/pin material)				*Min No drive sprocket per haft	Number of wear strips (min no)	
		POM-D/PA6.6		PP/PP		POM-D/PA6.6		PP/PP			**Carry (pcs)	**Return (pcs)
mm	in	N	lbf	N	lbf	kg/m	lb/ft	kg/m	lb/ft			
77	3.0	1733	389	1001	225	0.4	0.30	0.3	0.22	2	2	2
154	6.1	3464	779	2002	450	0.9	0.60	0.6	0.43	2	2	2
231	9.1	5196	1168	3002	675	1.3	0.90	1.0	0.65	3	2	2
308	12.1	6927	1557	4003	900	1.8	1.20	1.3	0.87	4	3	2
385	15.2	8659	1947	5003	1125	2.2	1.50	1.6	1.09	4	3	2
462	18.2	10391	2336	6004	1350	2.7	1.80	1.9	1.30	5	4	2
539	21.2	12122	2725	7004	1575	3.1	2.10	2.3	1.52	6	4	2
616	24.2	13854	3114	8005	1799	3.6	2.40	2.6	1.74	7	5	3
693	27.3	15586	3504	9005	2024	4.0	2.70	2.9	1.96	7	5	3
770	30.3	17317	3893	10006	2249	4.5	3.00	3.2	2.17	8	6	3
847	33.3	19049	4282	11006	2474	4.9	3.30	3.6	2.39	9	6	3
924	36.4	20781	4671	12007	2699	5.4	3.60	3.9	2.61	10	7	4
1001	39.4	22512	5061	13007	2924	5.8	3.90	4.2	2.82	11	7	4

Additional standard belt widths are available in steps of 77.0 mm (3.03 in.) Additional non-standard belt widths are available in steps of 12.7 mm (0.50 in)

2002	78.8	45045	10126	26026	5851	11.6	7.80	8.4	5.65	21	14	7
------	------	-------	-------	-------	------	------	------	-----	------	----	----	---

Additional standard belt widths are available in steps of 77.0 mm (3.03 in.) Additional non-standard belt widths are available in steps of 12.7 mm (0.50 in)

2925	115.2	65813	14795	38025	8548	17.0	11.40	12.3	8.26	30	20	10
------	-------	-------	-------	-------	------	------	-------	------	------	----	----	----

General belt tolerance is +0/-0.4% at 23°C/73°F and 50% RH. For exact belt width contact Customer Service. Non standard belt width on request.

\*Max. Load per Drive Sprocket. Belt material: POM-D 1500 N (337 lbf), PP 1000 N (225 lbf).

\*\*Max. Spacing between wear strips, Carry: 152 mm (6 in); Return: 304 mm (12 in)

= Single Link



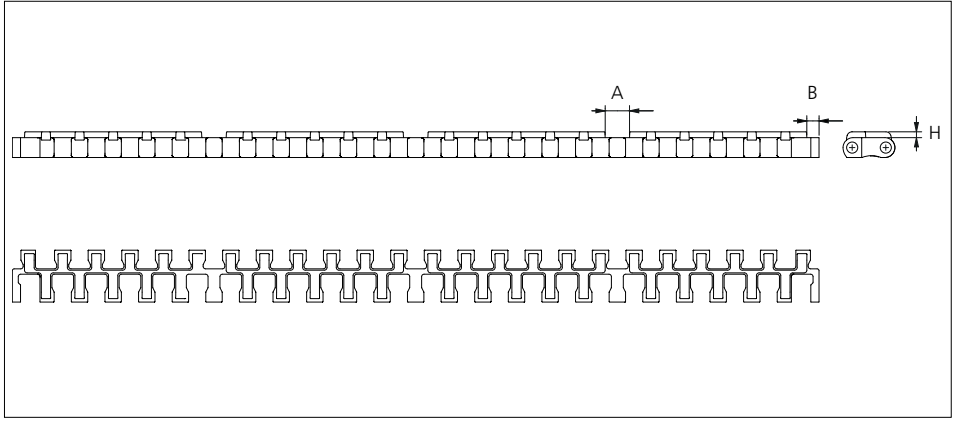
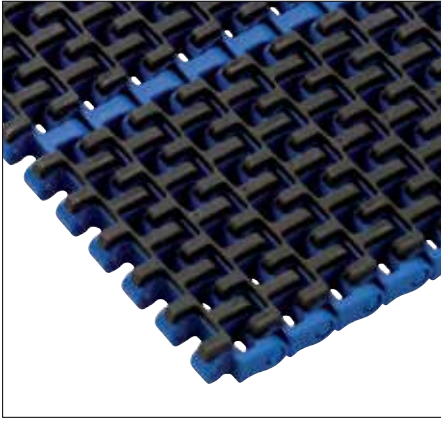
STANDARD

STRAIGHT RUNNING

PITCH 12.7 MM/0.50 IN

## Accessories

### Rubber Top

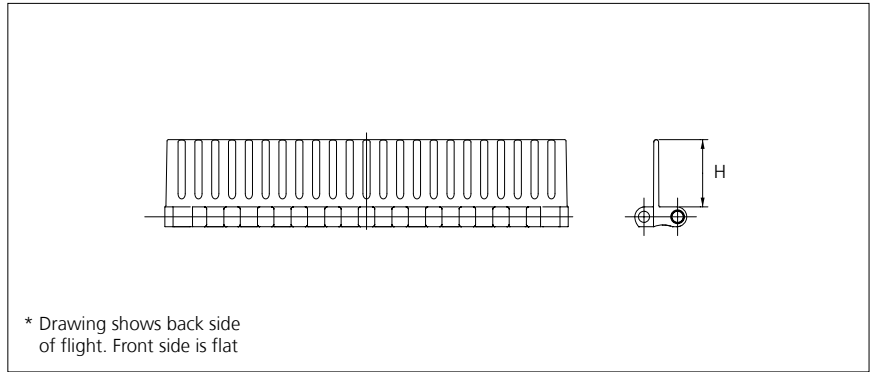
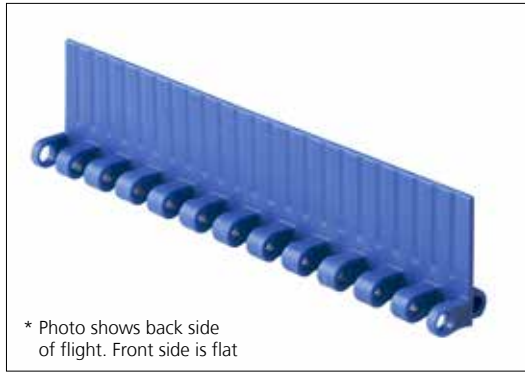


Type	Belt material & color	Rubber material & color	A		B		H		Link size	Width	
			mm	in	mm	in	mm	in		mm	in
Flat	PP <b>W</b>	03 <b>W</b>	9.2	0.36	4.6	0.18	2.2	0.09	K600	154.0	6.1
	PP <b>B</b>	03 <b>K</b>								308.0	12.1
	PP <b>G</b>	03 <b>K</b>									

Other Non Standard Rubber profiles: See uni Rubber Profile Overview.

## Accessories

### Flight

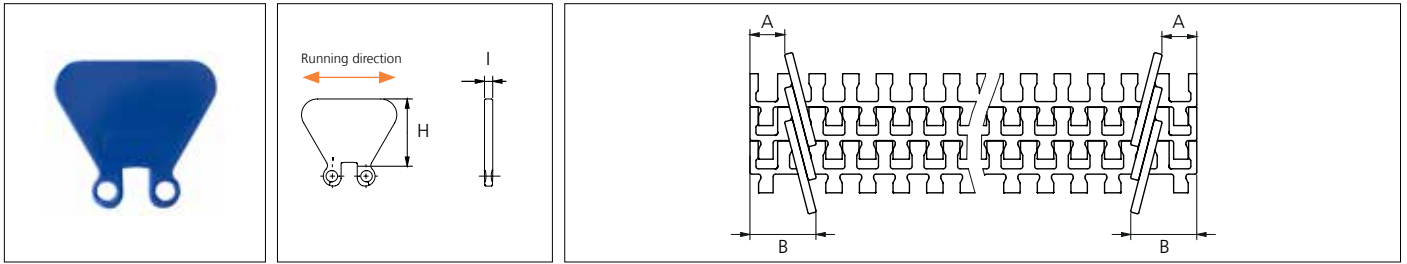


Type	Material & color	H		Link size	Width	
		mm	in		mm	in
Flat/Non Stick*	POM-D <b>W</b> <b>B</b>	25.4	1.00	K600	152.0	5.98

Non standard material and color: See uni Material and Color Overview.  
 Minimum indent is for uni M-TTB flight 0 mm. Increment: 12.7 mm (0.50 in).

## Accessories

### Side Guard

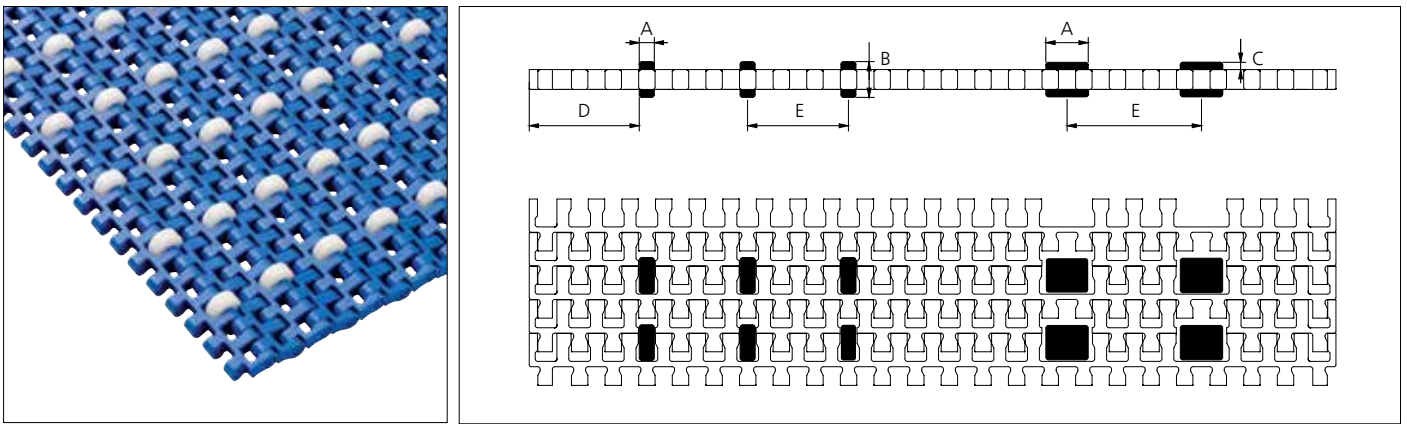


Type	Material & color	*A		B		H		I	
		mm	in	mm	in	mm	in	mm	in
Closed	POM-D <span style="border: 1px solid black; padding: 0 2px;">W</span> <span style="border: 1px solid black; padding: 0 2px;">B</span>	13.0	0.50	25.0	0.98	25.4	1.00	3.1	0.12

Non standard material and color: See uni Material and Color Overview.  
 \*Minimum indent is for uni M-TTB Side Guard. Increment: 12.7 mm (0.50 in).

## Accessories

### Roller

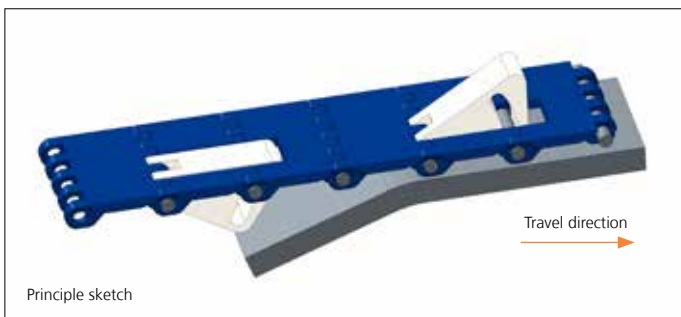


Type	Roller material & color	A		B		C		D (min)		E (min)	
		mm	in	mm	in	mm	in	mm	in	mm	in
Plastic	POM-D <span style="border: 1px solid black; padding: 0 2px;">W</span>	5.7	0.22	13.0	0.51	2.75	0.11	22.0	0.87	25.4	1.00
		16.0	0.62	13.0	0.51	2.75	0.11	22.0	0.87	38.1	1.50

Non standard Roller material and color: See uni Material and Color Overview.

## Accessories

### Non standard uni AmFlight for uni M-TTB



Other non standard option: See uni Amflight Overview.

## Sprocket

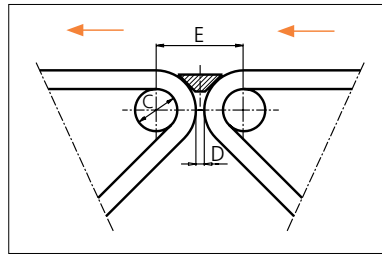
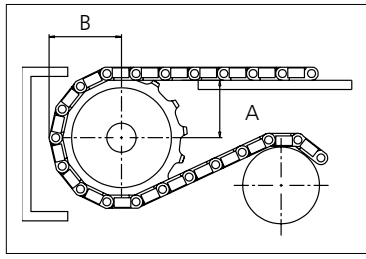
No. of teeth	Bore size										Overall diameter		Pitch diameter		Hub diameter		A-dimension		B-dimension		Single row/Two way	Double row/Two way	Material	
	Pilot bore	in		mm		in		mm		Molded													Machined	
		mm	19.1	20.0	25.0	25.4	30.0	31.8	38.1		40.0	PAG	PAG											
Z12	x		●	●							52.0	2.05	49.1	1.93	40.7	1.60	20.0	0.79	28.2	1.11		x		x
Z15	x				●	●					64.6	2.54	61.1	2.41	53.3	2.10	26.1	1.03	34.2	1.35		x		x
Z19	x									■	80.1	3.15	77.2	3.04	68.8	2.71	34.3	1.35	42.3	1.66	x		x	
Z24	x		●	●	●	●	●	■	■		102.1	4.02	97.3	3.83	90.8	3.57	44.5	1.75	52.4	2.06		x		x
Z36	x							■	■		152.3	6.01	145.7	5.74	141.0	5.55	68.8	2.71	76.6	3.01		x		x

■ Molded sprocket    ■ Machined sprocket    ● Machined sprocket



Non standard material and color: See uni Material and Color Overview.

### Nosebars Min. Dimensions



	mm	in
C	19.0	0.75
D	4.0	0.16
E	40.6	1.60

Other sprocket sizes are available upon request.  
 Two-part sprocket are available upon request.  
 Round bores are always delivered with keyway.  
 Other bore sizes are available upon request.  
 uni Retainer Rings: See uni Retainer Ring data sheet.  
 Width of tooth = 6.5 mm (0.26 in)  
 Width of sprocket = Single row: 17.5 mm (0.69 in)  
 Double row: 30.0 mm (1.18 in)

Max load per sprocket shown does not take bore size into account.  
 Please also ensure that sufficient size shaft is chosen for corresponding load.

For correct sprocket position: See uni Assembly Instructions for uni M-TTB.  
 For more detailed sprocket information, contact Customer Service.

uni M-TTB 37%/150817



Expert advice, quality solutions and local service for all your belting needs  
[www.ammeraalbeltech.com](http://www.ammeraalbeltech.com)

**Ammeraal Beltech Modular A/S**  
 Hjulmagervej 21  
 DK-7100 Vejle

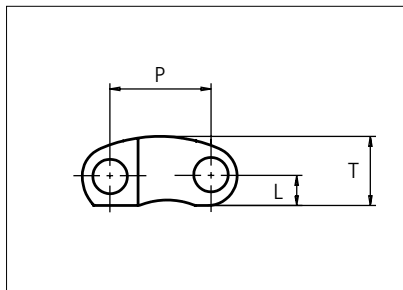
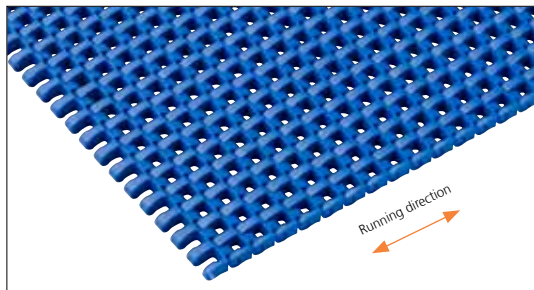
T +45 7572 3100  
 F +45 7572 3348  
 admin@unichains.com  
 www.unichains.com

This information is subject to alteration due to continuous development. Ammeraal Beltech will not be held liable for the incorrect use of the above stated information. This information replaces previous information. All activities performed and services rendered by Ammeraal Beltech are subject to general terms and conditions of sale and delivery, as applied by its operating companies.



# Plastic Modular Belt

Serie **uni M-TTB** Type **37% CS**



Straight Running  
 Nominal pitch: 12.7 mm (0.50 in)  
 Surface type: Curved  
 Surface opening: 37%  
 Backflex radius: 12.5 mm (0.49 in)  
 Min flex diameter (nosebar): 19.1 mm (0.75 in)  
 Pin diameter: 4.0 mm (0.16 in)  
 Curved surface makes perfect circle when 25.4 mm (1.00 in) flex diameter is applied.

<b>Belt material &amp; color</b>	PP <b>B</b>		<b>mm</b>	<b>in</b>		<b>mm</b>	<b>in</b>
<b>Pin material &amp; colors</b>	PP <b>W</b>	<b>P (Nominal)</b>	12.7	0.50	<b>T</b>	8.8	0.35
		<b>L</b>	3.8	0.15	-	-	-

Non standard material and color: See uni Material and Color Overview.

Alternative pin material: PA6.6 **B**

Belt width		Permissible tensile force (Belt/pin material)		Belt weight (Belt/pin material)		*Min No drive sprocket per haft	Number of wear strips (min no)	
mm	in	N	lbf	kg/m	lb/ft		**Carry (pcs)	**Return (pcs)
77	3.0	1001	225	0.3	0.22	2	2	2
154	6.1	2002	450	0.6	0.43	2	2	2
231	9.1	3002	675	1.0	0.65	3	2	2
308	12.1	4003	900	1.3	0.87	4	3	2
385	15.2	5003	1125	1.6	1.09	4	3	2
462	18.2	6004	1350	1.9	1.30	5	4	2
539	21.2	7004	1575	2.3	1.52	6	4	2
616	24.2	8005	1799	2.6	1.74	7	5	3
693	27.3	9005	2024	2.9	1.96	7	5	3
770	30.3	10006	2249	3.2	2.17	8	6	3
847	33.3	11006	2474	3.6	2.39	9	6	3
924	36.4	12007	2699	3.9	2.61	10	7	4
1001	39.4	13007	2924	4.2	2.82	11	7	4

Additional standard belt widths are available in steps of 77.0 mm (3.03 in.) Additional non-standard belt widths are available in steps of 12.7 mm (0.50 in)

2002	78.8	26026	5851	8.4	5.65	21	14	7
------	------	-------	------	-----	------	----	----	---

Additional standard belt widths are available in steps of 77.0 mm (3.03 in.) Additional non-standard belt widths are available in steps of 12.7 mm (0.50 in)

1925	75.8	25025	5626	8.1	5.43	20	13	7
------	------	-------	------	-----	------	----	----	---

General belt tolerance is +0/-0.4% at 23°C/73°F and 50% RH. For exact belt width contact Customer Service. Non standard belt width on request.

\*Max. Load per Drive Sprocket. Belt material: PP 1000 N (225 lbf)

\*\*Max. Spacing between wear strips. Carry: 152 mm (6 in); Return: 304 mm (12 in)

= Single Link



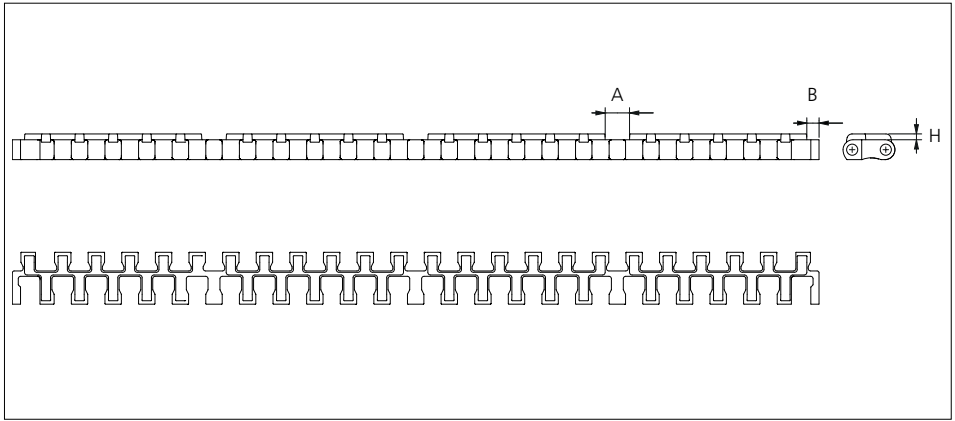
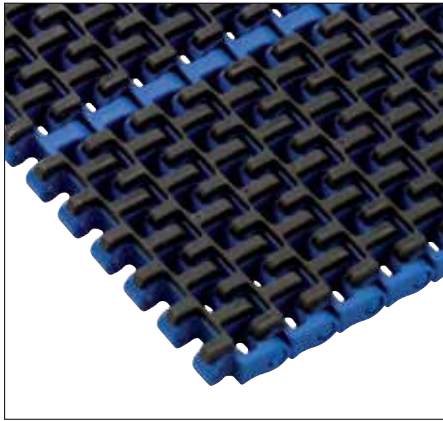
STANDARD

STRAIGHT RUNNING

PITCH 12.7 MM/0.50 IN

## Accessories

### Rubber Top

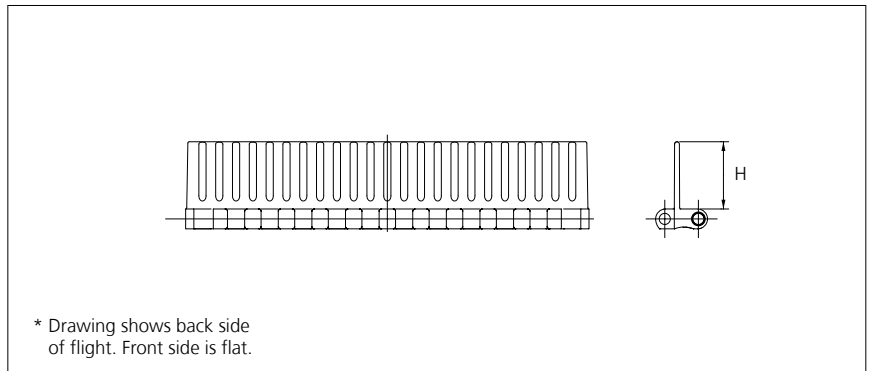
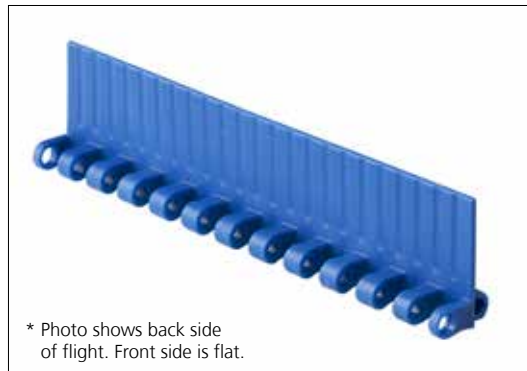


Type	Belt material & color	Rubber material & color	A		B		H		Link size	Width	
			mm	in	mm	in	mm	in		mm	in
Flat	PP <b>W</b>	03 <b>W</b>	9.2	0.36	4.6	0.18	2.2	0.09	K600	154.0	6.1
	PP <b>B</b>	03 <b>K</b>								308.0	12.1
	PP <b>G</b>	03 <b>K</b>									

Other Non Standard Rubber profiles: See uni Rubber Profile Overview.

## Accessories

### Flight



Type	Material & color	H		Link size	Width	
		mm	in		mm	in
Flat/Non Stick*	POM-D <b>W</b> <b>B</b>	25.4	1.00	K600	152.0	5.98

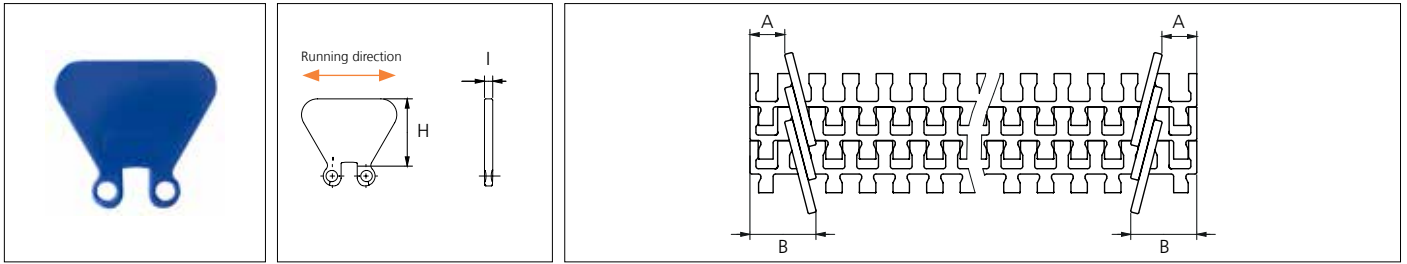
Non standard material and color: See uni Material and Color Overview.

Minimum indent is for uni M-TTB flight 0 mm. Increment: 12.7 mm (0.50 in).



## Accessories

### Side Guard



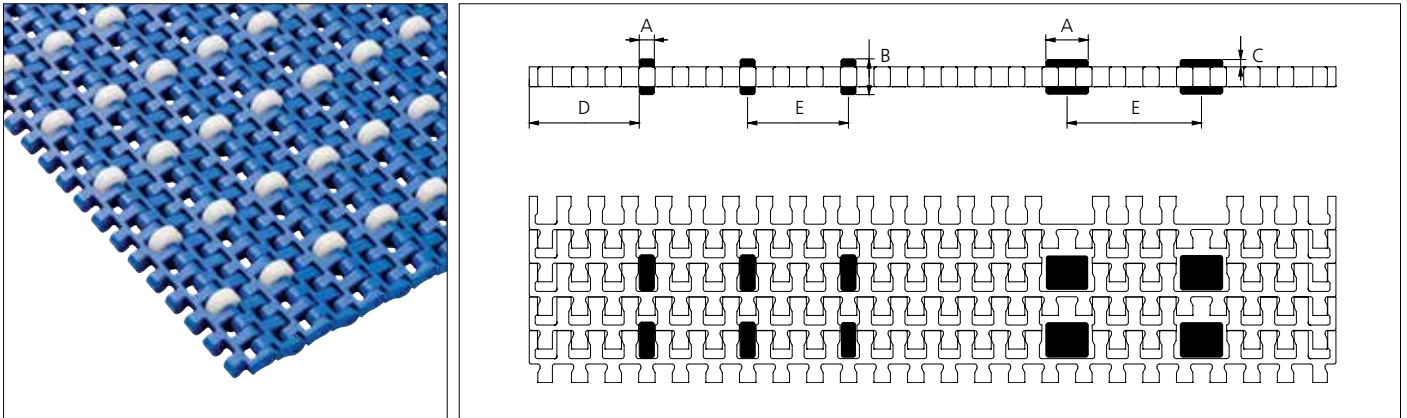
Type	Material & color	*A		B		H		I	
		mm	in	mm	in	mm	in	mm	in
Closed	POM-D <b>W</b> <b>B</b>	13.0	0.50	25.0	0.98	25.4	1.00	3.1	0.12

Non standard material and color: See uni Material and Color Overview.

\*Minimum indent is for uni M-TTB Side Guard. Increment: 12.7 mm (0.50 in).

## Accessories

### Roller



Type	Roller material & color	A		B		C		D (min)		E (min)	
		mm	in	mm	in	mm	in	mm	in	mm	in
Plastic	POM-D <b>W</b>	5.7	0.22	13.0	0.51	2.75	0.11	22.0	0.87	25.4	1.00
		16.0	0.62	13.0	0.51	2.75	0.11	22.0	0.87	38.1	1.50

Non standard Roller material and color: See uni Material and Color Overview.

## Sprocket

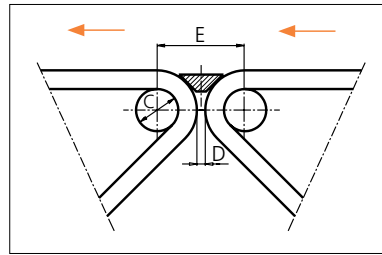
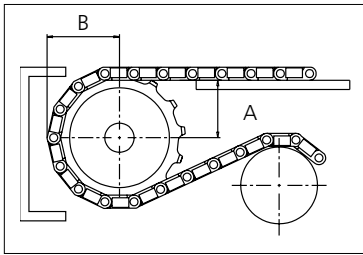
No. of teeth	Bore size										Overall diameter		Pitch diameter		Hub diameter		A-dimension		B-dimension		Single row/Two way	Double row/Two way	Molded PA6 LG	Machined PA6 N
	Pilot bore	in	0.75	0.78	0.98	1.00	1.18	1.25	1.50	1.57														
	mm	19.1	20.0	25.0	25.4	30.0	31.8	38.1	40.0	mm	in	mm	in	mm	in	mm	in							
Z12	x		●	●							52.0	2.05	49.1	1.93	40.7	1.60	20.0	0.79	28.2	1.11		x		x
Z15	x				●	●					64.6	2.54	61.1	2.41	53.3	2.10	26.1	1.03	34.2	1.35		x		x
Z19	x								■		80.1	3.15	77.2	3.04	68.8	2.71	34.3	1.35	42.3	1.66	x		x	
Z24	x			●	●	●	●	●	■	■	102.1	4.02	97.3	3.83	90.8	3.57	44.5	1.75	52.4	2.06		x		x
Z36	x								■	■	152.3	6.01	145.7	5.74	141.0	5.55	68.8	2.71	76.6	3.01		x		x

■ Molded sprocket    ■ Machined sprocket    ● Machined sprocket



Non standard material and color: See uni Material and Color Overview.

### Nosebars Min. Dimensions



	mm	in
C	19.0	0.75
D	4.0	0.16
E	43.2	1.70

Other sprocket sizes are available upon request.  
 Two-part sprocket are available upon request.  
 Round bores are always delivered with keyway.  
 Other bore sizes are available upon request.  
 uni Retainer Rings: See uni Retainer Ring data sheet.  
 Width of tooth = 6.5 mm (0.26 in)  
 Width of sprocket = Single row: 17.5 mm (0.69 in)  
 Double row: 30.0 mm (1.18 in)

Max load per sprocket shown does not take bore size into account.  
 Please also ensure that sufficient size shaft is chosen for corresponding load.

For correct sprocket position: See uni Assembly Instructions for uni M-TTB.  
 For more detailed sprocket information, contact Customer Service.

uni M-TTB 37% CS/150817



Expert advice, quality solutions and local service for all your belting needs  
[www.ammeraalbeltech.com](http://www.ammeraalbeltech.com)

**Ammeraal Beltech Modular A/S**  
 Hjulmagervej 21  
 DK-7100 Vejle

T +45 7572 3100  
 F +45 7572 3348  
 admin@unichains.com  
 www.unichains.com

This information is subject to alteration due to continuous development. Ammeraal Beltech will not be held liable for the incorrect use of the above stated information. This information replaces previous information. All activities performed and services rendered by Ammeraal Beltech are subject to general terms and conditions of sale and delivery, as applied by its operating companies.

# Local Contacts

## Austria

T +43 171728 133  
info-de@ammeraalbeltech.com  
www.ammeraalbeltech.at

## Belgium

T +32 2 466 03 00  
info-be@ammeraalbeltech.com  
www.ammeraalbeltech.be

## Canada

T +1 905 890 1311  
info-ca@ammeraalbeltech.com  
www.ammeraalbeltech.com

## Chile

T +56 2 233 12900  
info-cl@ammeraalbeltech.com  
www.ammeraalbeltech.cl

## China

T +86 512 8287 2709  
info-cn@ammeraalbeltech.com  
www.ammeraalbeltech.com.cn

## Czech Republic

T +420 567 117 211  
info-cz@ammeraalbeltech.com  
www.ammeraalbeltech.cz

## Denmark

T + 45 7572 3100  
info-dk@ammeraalbeltech.com  
www.unichains.com

## Finland

T +358 207 911 400  
info-fi@ammeraalbeltech.com  
www.ammeraalbeltech.fi

## France

T +33 3 20 90 36 00  
info-fr@ammeraalbeltech.com  
www.ammeraalbeltech.fr

## Germany

T +49 4152 937-0  
info-de@ammeraalbeltech.com  
www.ammeraalbeltech.de

## Hungary

T +36 30 311 6099  
info-hu@ammeraalbeltech.com  
www.ammeraalbeltech.hu

## India

T +91 44 265 34 244  
info-in@ammeraalbeltech.com  
www.ammeraalbeltech.com

## Italy

T +39 051 660 60 06  
info-it@ammeraalbeltech.com  
www.ammeraalbeltech.it

## Luxembourg

T +352 26 48 38 56  
info-lu@ammeraalbeltech.com  
www.ammeraal-beltech.lu

## Malaysia

T +60 3 806 188 49  
info-my@ammeraalbeltech.com  
www.ammeraalbeltech.com

## Netherlands

T +31 72 57 51212  
info-nl@ammeraalbeltech.com  
www.ammeraalbeltech.nl

## Poland

T +48 32 44 77 179  
info-pl@ammeraalbeltech.com  
www.ammeraalbeltech.com

## Portugal

T +351 22 947 94 40  
info-pt@ammeraalbeltech.com  
www.ammeraalbeltech.pt

## Singapore

T +65 62739767  
info-sg@ammeraalbeltech.com  
www.ammeraalbeltech.com

## Slovakia

T +421 2 55648541-2  
info-sk@ammeraalbeltech.com  
www.ammeraalbeltech.sk

## South Korea

T +82 31 448 3613-7  
info-kr@ammeraalbeltech.com  
www.ammeraalbeltech.co.kr

## Spain

T +34 93 718 3054  
info-es@ammeraalbeltech.com  
www.ammeraalbeltech.es

## Sweden

T +46 44 780 3010  
info-se@ammeraalbeltech.com  
www.ammeraalbeltech.se

## Switzerland

T +41 55 2253 535  
info-ch@ammeraalbeltech.com  
www.ammeraalbeltech.ch

## Thailand

T +66 2 902 2604-13  
info-th@ammeraalbeltech.com  
www.ammeraalbeltech.com

## United Kingdom

T +44 1992 500550  
info-uk@ammeraalbeltech.com  
www.ammeraalbeltech.co.uk

## United States

T +1 847 673 6720  
info-us@ammeraalbeltech.com  
www.ammeraalbeltech.com

## Vietnam

T +84 8 376 562 05  
info-vn@ammeraalbeltech.com  
www.ammeraalbeltech.com.vn

## Global Headquarters:

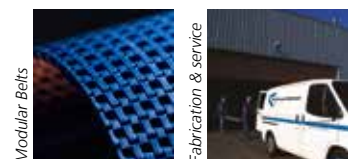
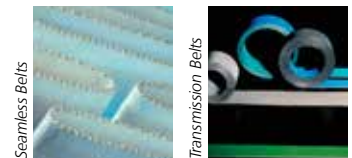
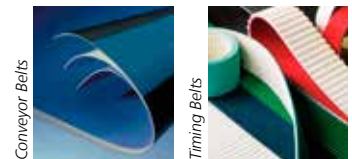
### Ammeraal Beltech Holding B.V.

P.O. Box 38  
1700 AA Heerhugowaard  
The Netherlands

T +31 (0)72 575 1212  
F +31 (0)72 571 6455

info@ammeraalbeltech.com  
www.ammeraalbeltech.com

Expert advice, quality solutions  
and local service  
for all your belting needs



... and 150 more service contact points on [www.ammeraalbeltech.com](http://www.ammeraalbeltech.com)