

Ammeraal Beltech Modular

Innovative belt and chain solutions
for every industry & application



Content

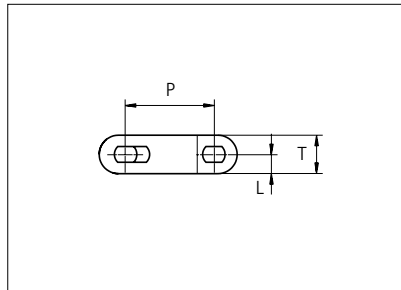
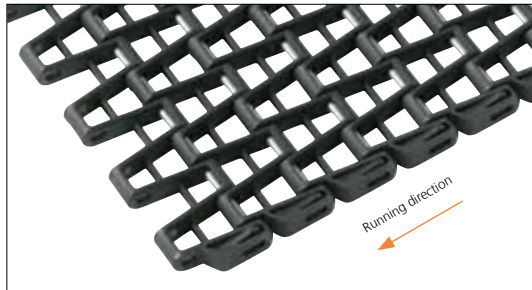
uni OWL 66%

page 3 - 4



Plastic Modular Belt

Series **uni OWL** Type **66%**



Straight running belt
 Nominal pitch: 27.9 mm (1.10 in)
 Surface type: Flat
 Surface opening: 66%
 Backflex radius: 40.0 mm (1.57 in)
 Pin diameter: \varnothing 4.0 mm (0.16 in)
 Travel in both directions is possible.
 uni-chains recommends this travel direction.

Belt material & color	PA6.6 GFH K	PA6.6 GFH B	PP W	PP B		mm	in		mm	in
	Pin and lock material & color	SS304	SS304	PBT LG	PBT LG	P (Nominal)	27.9	1.10	T	11.0
	PA6.6 GFH K	PA6.6 GFH B	PP W	PP B	L	5.5	0.22	-	-	-

Non standard material and color: See uni Material and Color Overview.

Alternative pin and lock materials: Pin: PA6.6 **B** PBT **LG** SS304

*Belt width		Permissible tensile force (Belt/pin material)				Belt weight (Belt/pin material)				**Min. No. drive sprocket per shaft	Number of wear strips (Min. No.)	
		PA6.6 GFH/SS		PP/PA6.6		PA6.6 GFH/SS		PP/PA6.6			***Carry (pcs)	***Return (pcs)
mm	in	N	lbf	N	lbf	kg/m	lb/ft	kg/m	lb/ft			
303	11.9	3636	817	2424	545	2.3	1.57	1.4	0.94	3	3	2
337	13.3	4040	908	2693	605	2.6	1.74	1.5	1.04	3	3	2
370	14.6	4443	999	2962	666	2.9	1.92	1.7	1.14	3	3	2
404	15.9	4847	1090	3231	726	3.1	2.09	1.9	1.25	3	3	2
438	17.2	5250	1180	3500	787	3.4	2.26	2.0	1.35	3	3	2
471	18.5	5654	1271	3769	847	3.6	2.44	2.2	1.46	4	4	2
505	19.9	6057	1362	4038	908	3.9	2.61	2.3	1.56	4	4	2
538	21.2	6461	1452	4307	968	4.1	2.79	2.5	1.66	4	4	2
572	22.5	6864	1543	4576	1029	4.4	2.96	2.6	1.77	4	4	2
606	23.8	7268	1634	4845	1089	4.7	3.13	2.8	1.87	5	5	3
639	25.2	7672	1725	5114	1150	4.9	3.31	2.9	1.98	5	5	3
673	26.5	8075	1815	5383	1210	5.2	3.48	3.1	2.08	5	5	3
707	27.8	8479	1906	5652	1271	5.4	3.66	3.3	2.18	5	5	3

Standard Increments in belt width : 33.6 mm (1.32 in.)

1984	78.1	23808	5352	15872	3568	15.3	10.27	9.1	6.13	14	14	7
------	------	-------	------	-------	------	------	-------	-----	------	----	----	---

Standard Increments in belt width : 33.6 mm (1.32 in.)

2993	117.8	35916	8074	23944	5383	23.0	15.49	13.8	9.25	20	20	10
------	-------	-------	------	-------	------	------	-------	------	------	----	----	----

*The belt width in PA6.6 GFH is 1% wider than the belt width in the table

**Max. Load per Drive Sprocket. Belt material: PA6.6 GFH 1200 N (270 lbf), PP 800 N (180 lbf)

***Max. Spacing between wear strips, Carry: 152 mm (6 in.) ; Return: 304 mm (12 in.)



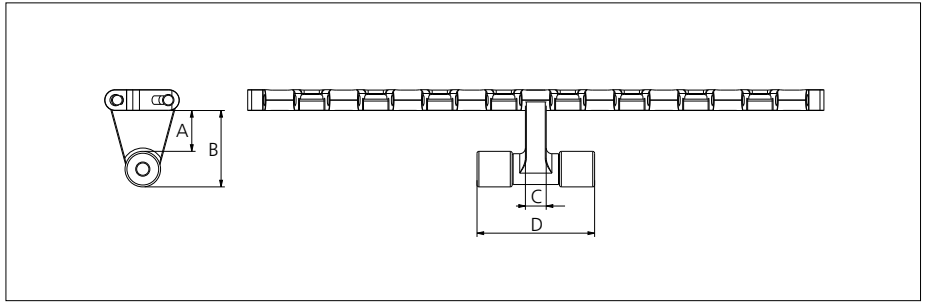
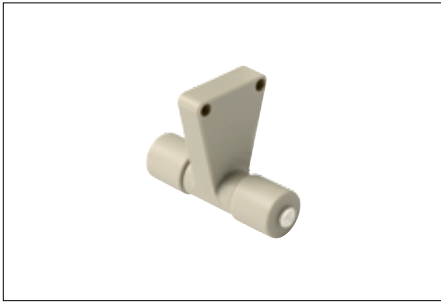
STANDARD

STRAIGHT RUNNING

PITCH 27.9 MM/1.10 IN

Accessories

Tab/NON STANDARD



Type	Belt material & color	A		B		C		D	
		mm	in	mm	in	mm	in	mm	in
Bottom Hold Down	PP W	23.6	0.93	42.6	1.68	11.0	0.43	63.5	2.50

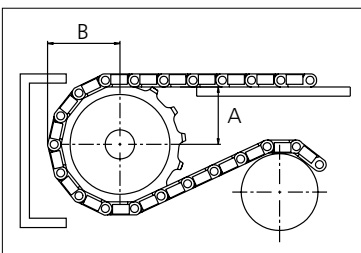
Non Standard material and color: See uni Material and Color Overview.

Sprocket

No of teeth	Bore size													Overall diameter		Pitch-diameter		Hub-diameter		A-dimension		B-dimension		Single row/One way	Double row/Two way	Molded PA6 LG	Machined PA6 N
	Pilot bore		0.75	0.78	0.98	1.00	1.18	1.25	1.50	1.57	2.36	2.50	3.54														
	mm	in	mm	mm	mm	mm	mm	mm	mm	mm	mm	mm	mm	mm	mm	mm	mm	mm	mm	mm	mm	mm					
29				■	●	●	●		●					82.7	3.26	80.2	3.16	63.7	2.51	32.8	1.29	46.4	1.83	x			x
Z11					●	●	●	■	●	■				101.0	3.98	97.9	3.85	82.0	3.23	42.0	1.65	55.1	2.17	x			x
Z13					●	●	●	■	●	■				119.2	4.69	115.6	4.55	100.2	3.94	51.1	2.01	63.8	2.51	x			x
Z15						●	●	●	●	■	■	■	■	137.3	5.41	133.4	5.25	118.3	4.66	60.1	2.37	72.6	2.86	x			x

■ Machined sprocket

● Machined sprocket



Other sprocket sizes are available upon request.
 Two-part sprocket are available upon request.
 Round bores are always delivered with keyway.
 Other bore sizes are available upon request.
 uni Retainer Rings: See uni Retainer Ring data sheet.
 Width of tooth = 12.5 mm (0.49 in)
 Width of sprocket = 30.0 mm (1.18 in)

Max load per sprocket shown does not take bore size into account.
 Please also ensure that sufficient size shaft is chosen for corresponding load.

For correct sprocket position: See uni Assembly Instructions for uni OWL.
 For more detailed sprocket information, contact Customer Service.

Non standard material and color: See uni Material and Color Overview.



Solid advice
 For all your belting needs
 Local stock & service
www.ammeraalbeltech.com

Ammeraal Beltech Modular A/S
 Hjulmagervej 21
 DK-7100 Vejle

T +45 7572 3100
 F +45 7572 3348
 admin@unichains.com
 www.unichains.com

This information is subject to alteration due to continuous development. Ammeraal Beltech will not be held liable for the incorrect use of the above stated information. This information replaces previous information. All activities performed and services rendered by Ammeraal Beltech are subject to general terms and conditions of sale and delivery, as applied by its operating companies.

Local Contacts

Austria

T +43 171728 133
info-de@ammeraalbeltech.com
www.ammeraalbeltech.at

Belgium

T +32 2 466 03 00
info-be@ammeraalbeltech.com
www.ammeraalbeltech.be

Canada

T +1 905 890 1311
info-ca@ammeraalbeltech.com
www.ammeraalbeltech.com

Chile

T +56 2 233 12900
info-cl@ammeraalbeltech.com
www.ammeraalbeltech.cl

China

T +86 512 8287 2709
info-cn@ammeraalbeltech.com
www.ammeraalbeltech.com.cn

Czech Republic

T +420 567 117 211
info-cz@ammeraalbeltech.com
www.ammeraalbeltech.cz

Denmark

T + 45 7572 3100
info-dk@ammeraalbeltech.com
www.unichains.com

Finland

T +358 207 911 400
info-fi@ammeraalbeltech.com
www.ammeraalbeltech.fi

France

T +33 3 20 90 36 00
info-fr@ammeraalbeltech.com
www.ammeraalbeltech.fr

Germany

T +49 4152 937-0
info-de@ammeraalbeltech.com
www.ammeraalbeltech.de

Hungary

T +36 30 311 6099
info-hu@ammeraalbeltech.com
www.ammeraalbeltech.hu

India

T +91 44 265 34 244
info-in@ammeraalbeltech.com
www.ammeraalbeltech.com

Italy

T +39 051 660 60 06
info-it@ammeraalbeltech.com
www.ammeraalbeltech.it

Luxembourg

T +352 26 48 38 56
info-lu@ammeraalbeltech.com
www.ammeraal-beltech.lu

Malaysia

T +60 3 806 188 49
info-my@ammeraalbeltech.com
www.ammeraalbeltech.com

Netherlands

T +31 72 57 51212
info-nl@ammeraalbeltech.com
www.ammeraalbeltech.nl

Poland

T +48 32 44 77 179
info-pl@ammeraalbeltech.com
www.ammeraalbeltech.com

Portugal

T +351 22 947 94 40
info-pt@ammeraalbeltech.com
www.ammeraalbeltech.pt

Singapore

T +65 62739767
info-sg@ammeraalbeltech.com
www.ammeraalbeltech.com

Slovakia

T +421 2 55648541-2
info-sk@ammeraalbeltech.com
www.ammeraalbeltech.sk

South Korea

T +82 31 448 3613-7
info-kr@ammeraalbeltech.com
www.ammeraalbeltech.co.kr

Spain

T +34 93 718 3054
info-es@ammeraalbeltech.com
www.ammeraalbeltech.es

Sweden

T +46 44 780 3010
info-se@ammeraalbeltech.com
www.ammeraalbeltech.se

Switzerland

T +41 55 2253 535
info-ch@ammeraalbeltech.com
www.ammeraalbeltech.ch

Thailand

T +66 2 902 2604-13
info-th@ammeraalbeltech.com
www.ammeraalbeltech.com

United Kingdom

T +44 1992 500550
info-uk@ammeraalbeltech.com
www.ammeraalbeltech.co.uk

United States

T +1 847 673 6720
info-us@ammeraalbeltech.com
www.ammeraalbeltech.com

Vietnam

T +84 8 376 562 05
info-vn@ammeraalbeltech.com
www.ammeraalbeltech.com.vn

Global Headquarters:

Ammeraal Beltech Holding B.V.

P.O. Box 38
1700 AA Heerhugowaard
The Netherlands

T +31 (0)72 575 1212
F +31 (0)72 571 6455

info@ammeraalbeltech.com
www.ammeraalbeltech.com

Expert advice, quality solutions
and local service
for all your belting needs



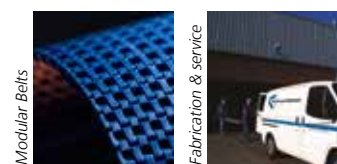
Conveyor Belts

Timing Belts



Seamless Belts

Transmission Belts



Modular Belts

Fabrication & service

... and 150 more service contact points on www.ammeraalbeltech.com