

Ammeraal Beltech Modular

Innovative belt and chain solutions
for every industry & application



Content

uni QNB C

page 3 - 6

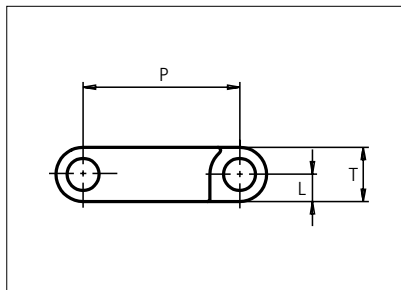
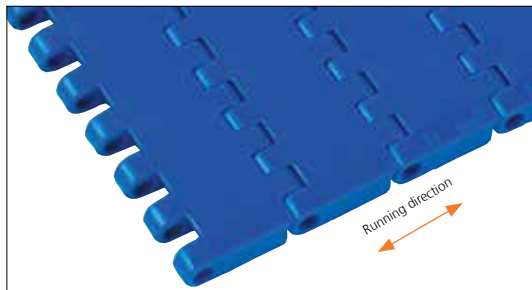
uni QNB Rough

page 7 - 10



Plastic Modular Belt

Series **uni QNB** Type **C**



Straight running belt
 Nominal pitch: 25.4 mm (1.00 in)
 Surface type: Flat
 Surface opening: Closed
 Backflex radius: 40.0 mm (1.57 in)
 Pin diameter: 5.0 mm (0.19 in)

Belt material & color	POM-SLF B	PP B	PP W		mm	in		mm	in	
Pin material & color	🔗 PP B		🔗 PP W		P (Nominal)	25.4	1.00	L	4.4	0.17
					T	8.8	0.35	-	-	-

Non standard material and color: See uni Material and Color Overview.

Alternative pin and lock materials: 🔗 Solid Lockpin: PA6.6 **D** 🔗 Pin: PP **W** PA6.6 **B** PE **W** PBT **LG** and SS304 🔗 Endlock: PP **D**
 🔗 Lockpin: PBT **LG** PA6.6 **D** **N** PP **B** **W**

Belt width		Permissible tensile force (Belt/pin material)				Belt weight (Belt/pin material)				*Min. No. drive sprocket per shaft	Number of wear strips (Min. No.)	
		POM-SLF/PP		PP/PP		POM-SLF/PP		PP/PP			**Carry (pcs)	**Return (pcs)
mm	in	N	lbf	N	lbf	kg/m	lb/ft	kg/m	lb/ft			
39	1.5	1365	307	780	175	0.3	0.22	0.2	0.14	1	1	1
51	2.0	1768	397	1010	227	0.4	0.29	0.3	0.18	2	1	1
77	3.0	2695	606	1540	346	0.6	0.43	0.4	0.28	2	2	2
153	6.0	5355	1204	3060	688	1.3	0.86	0.8	0.56	2	2	2
229	9.0	8015	1802	4580	1030	1.9	1.29	1.2	0.83	2	2	2
305	12.0	10675	2400	6100	1371	2.6	1.72	1.6	1.11	3	3	2
382	15.0	13370	3006	7640	1717	3.2	2.16	2.1	1.39	3	3	2
458	18.0	16030	3604	9160	2059	3.8	2.59	2.5	1.66	4	4	2
534	21.0	18690	4202	10680	2401	4.5	3.01	2.9	1.94	4	4	2
610	24.0	21350	4799	12200	2743	5.1	3.44	3.3	2.21	5	5	3
687	27.0	24045	5405	13740	3089	5.8	3.88	3.7	2.49	5	5	3
763	30.0	26705	6003	15260	3430	6.4	4.31	4.1	2.77	6	6	3

Additional standard belt widths are available in steps of 76.3 mm (3.00 in). Additional non-standard belt widths are available in steps of 25.4 mm (1.00 in).

1983	78.1	69405	15602	39660	8916	16.7	11.19	10.7	7.20	14	14	7
------	------	-------	-------	-------	------	------	-------	------	------	----	----	---

Additional standard belt widths are available in steps of 76.3 mm (3.00 in). Additional non-standard belt widths are available in steps of 25.4 mm (1.00 in).

2974	117.1	104090	23399	59480	13371	25.0	16.79	16.1	10.79	20	20	10
------	-------	--------	-------	-------	-------	------	-------	------	-------	----	----	----

General belt tolerance is +0/-0.4% at 23°C/73°F and 50% RH. For exact belt width contact Customer Service. Non standard belt width on request.

*Max. Load per Drive Sprocket. Belt material: POM-SLF 2300 N (517 lbf), PP 1300 N (292 lbf).

**Max. Spacing between wear strips, Carry: 152 mm (6 in); Return: 304 mm (12 in).

☐ = Single Link



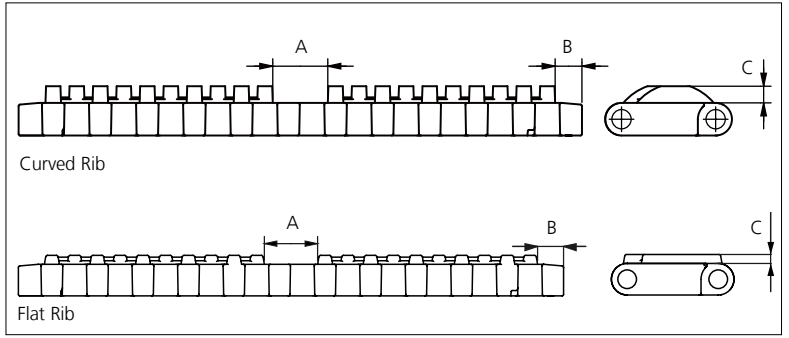
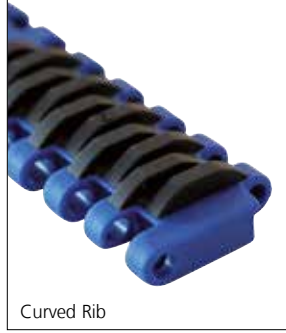
STANDARD

STRAIGHT RUNNING

PITCH 25.4 MM/1.00 IN

Accessories

Rubber Top

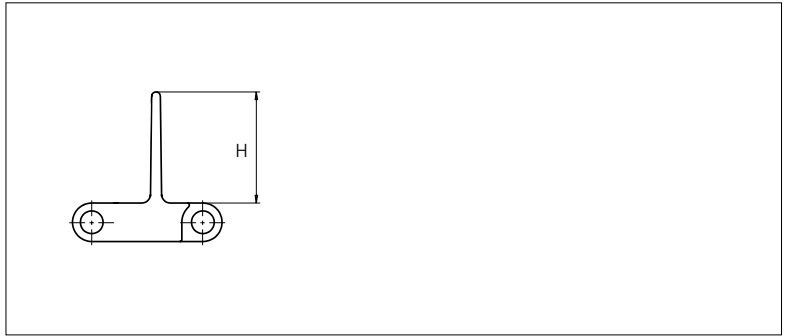
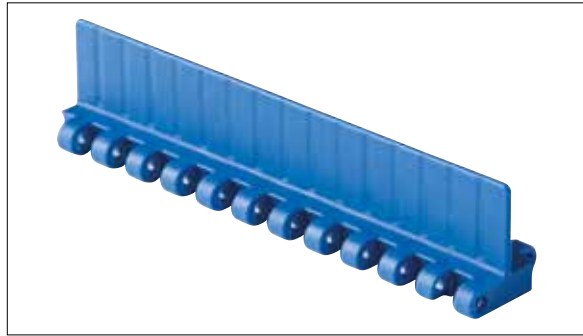


Type	Belt Material & color	Rubber Material & color	A		B		C		Link size	Width	
			mm	in	mm	in	mm	in		mm	in
Curved Rib	PP B	03 K	14.9	0.59	7.3	0.29	4.5	0.18	K300	75.8	2.98
Flat Rib			14.85	0.58	7.25	0.29	2.5	0.10	K300	75.8	2.98
									K600	152.0	5.98
									K600	152.0	5.98

Non Standard material and color: See uni Material and Color Overview.

Accessories

Flight

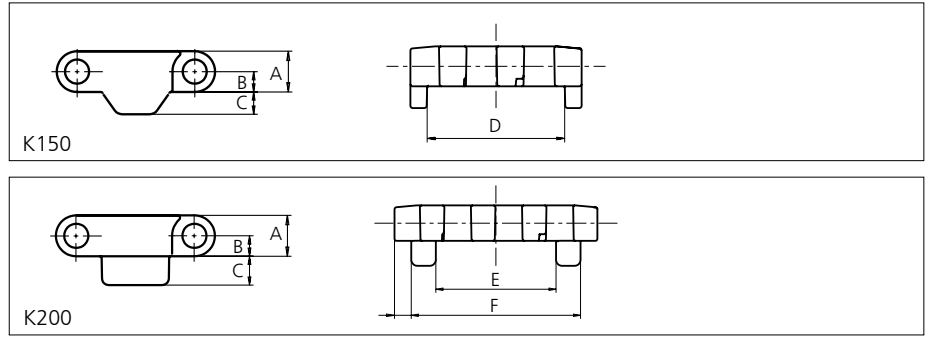
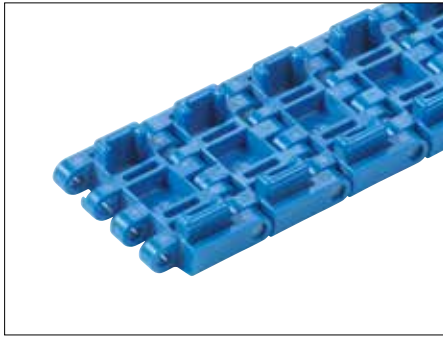


Type	Flight Material & color	H		Link size	Width		Indent	
		mm	in		mm	in	mm	in
Non Stick	PP-I B W	25.4	1.00	K600	152.0	5.98	0.0	0.00
	POM-SLF B							

Non Standard material and color: See uni Material and Color Overview.

Accessories

Tab – Single Link Only

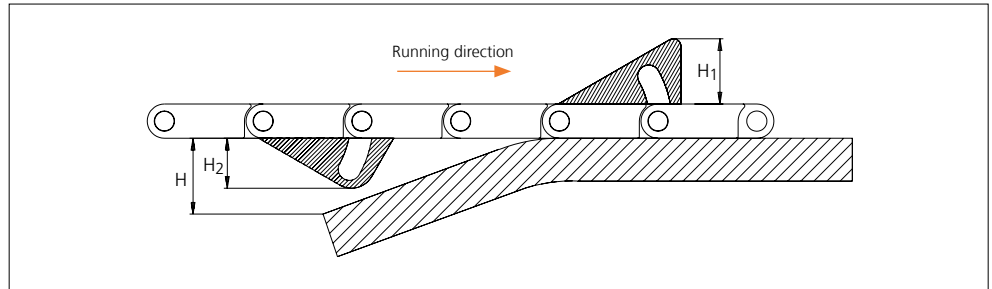
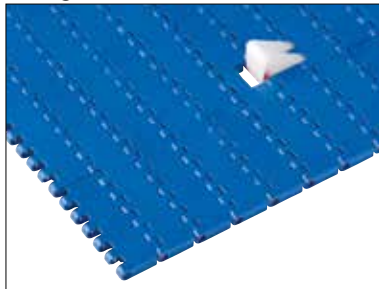


Type	Link material & color	Pin material & color	A		B		C		D		E		F		Link Size
			mm	in	mm	in	mm	in	mm	in	mm	in	mm	in	
Bottom Guide	POM-SLF B	PA6.6 D	8.8	0.35	4.4	0.17	4.8	0.19	30.3	1.19	29.9	1.18	42.1	1.66	K150 K200
	PP B														

⚡ Solid Lockpin as default lock system. Alternative pin materials & color: PBT **LG**
 Non Standard material and color: See uni Material and Color Overview.

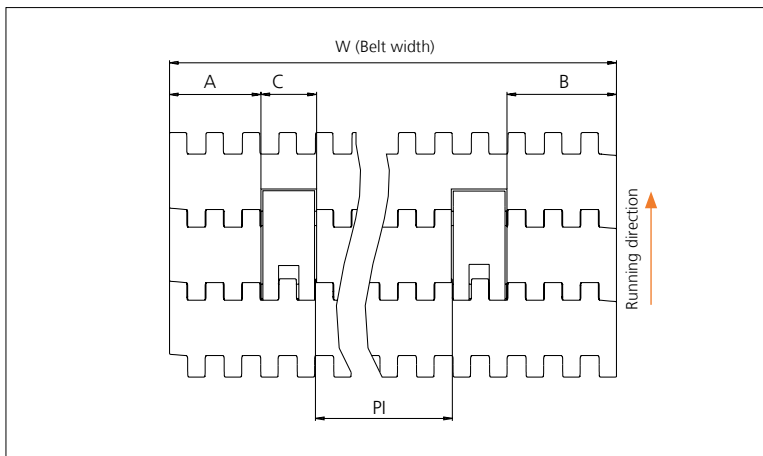
Accessories

AmFlight



Type	Material & color	H		H ¹		H ²	
		mm	in	mm	in	mm	in
Push	PE W	17.0	0.67	17.0	0.67	14.0	0.55

Other Non Standard option: See uni AmFlight Overview.



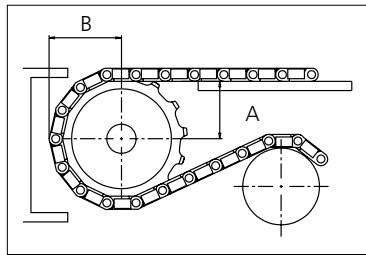
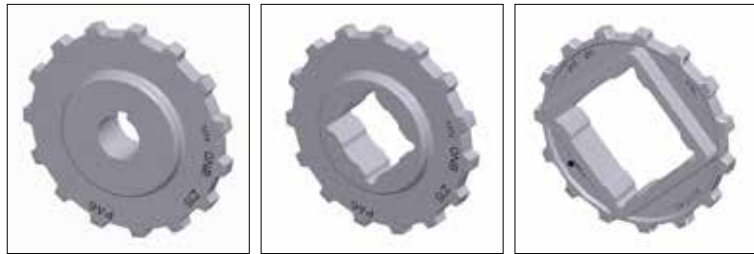
	mm	in
A min	32.4	1.28
B min	38.5	1.52
C	18.0	0.71
PI max	W - 106.9	W - 4.21
PI min	32.7	1.29

Increment: 12.7 mm (0.50 in)

Sprocket

No. of teeth	Bore size									Overall diameter		Pitch diameter		Hub diameter		Dimension A		Dimension B		Single row/Two way	Double row/Two way	Molded	Machined
	Pilot bore	1.00		1.18		1.25		1.50															
	mm	25.4	30.0	31.8	38.1	40.0	60.0	63.5	mm	in	mm	in	mm	in	mm	in	mm	in					
Z10	x		●	●	●	■	●			80.3	3.16	82.2	3.24	65.0	2.56	34.7	1.36	45.5	1.79	x		x	
Z12	x		●	●	●	■	●			96.8	3.81	98.1	3.86	70.0	2.76	43.0	1.69	53.5	2.11	x		x	
Z15	x			●	●	●	■	●	■	121.5	4.78	122.2	4.81	¹ 70.0 ² 100.0 ² 104.0	2.76 3.94 4.09	55.4	2.18	65.5	2.58	x		x	
Z18	x			●	●	●	■	●	■	146.0	5.75	146.3	5.76	¹ 70.0 ² 104.0 ¹ 120.0	2.76 4.09 4.72	67.6	2.66	77.5	3.05	x		x	
Z19	x			●	●	●	■	●	■	154.2	6.07	154.3	6.07	¹ 70.0 ¹ 120.0	2.76 4.72	71.7	2.82	81.6	3.21	x		x	

● Moulded sprocket ■ Moulded sprocket ■ Moulded sprocket



Same sprocket type as for the uni QNB serie.
 Other sprocket sizes are available upon request.
 Two-part sprockets are available upon request.
 Round bores are always delivered with keyway.
 Other bore sizes are available upon request.
 uni Retainer Rings: See uni Retainer Ring data sheet.
 Width of tooth = 10.0 mm (0.39 in)
 Width of sprocket = 25.0 mm (0.98 in)

Max load per sprocket shown does not take bore size into account.
 Please also ensure that sufficient size shaft is chosen for corresponding load.

For correct sprocket position: See uni Assembly Instructions for uni QNB.
 For more detailed sprocket information, contact Customer Service.

Non standard material and color: See uni Material and Color Overview.

uni QNB C/150203



Expert advice, quality solutions and local service for all your belting needs
www.ammeraalbeltech.com

Ammeraal Beltech Modular A/S
 Hjulmagervej 21
 DK-7100 Vejle

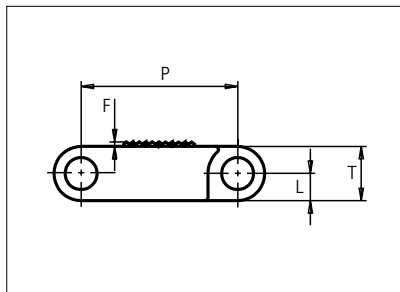
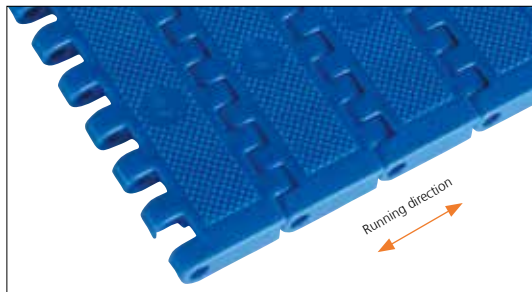
T +45 7572 3100
 F +45 7572 3348
 admin@unichains.com
 www.unichains.com

This information is subject to alteration due to continuous development. Ammeraal Beltech will not be held liable for the incorrect use of the above stated information. This information replaces previous information. All activities performed and services rendered by Ammeraal Beltech are subject to general terms and conditions of sale and delivery, as applied by its operating companies.



Plastic Modular Belt

Series **uni QNB** Type **Rough**



Straight running belt
 Nominal pitch: 25.4 mm (1.00 in)
 Surface type: Rough Top
 Surface opening: Closed
 Backflex radius: 40.0 mm (1.57 in)
 Pin diameter: 5.0 mm (0.31 in)

Belt material & color	POM-SLF B		mm	in		mm	in
Pin material & color	PP B	P (Nominal)	25.4	1.00	L	4.4	0.17
		F	0.8	0.03	T	8.8	0.35

Non standard material and color: See uni Material and Color Overview.

Alternative pin and lock materials: Solid Lockpin: PA6.6 **D** Pin: PP **W** PA6.6 **B** PE **W** PBT **LG** and SS304 Endlock: PP **D**
 Lockpin: PBT **LG** PA6.6 **D** **N** PP **B** **W**

Belt width		Permissible tensile force (Belt/pin material)		Belt weight (Belt/pin material)		*Min. No. drive sprocket per shaft	Number of wear strips (Min. No.)	
		POM-SLF/PP		POM-SLF/PP			**Carry (pcs)	**Return (pcs)
mm	in	N	lbf	kg/m	lb/ft			
77	3.0	2695	606	0.6	0.43	2	2	2
153	6.0	5355	1204	1.3	0.86	2	2	2
229	9.0	8015	1802	1.9	1.29	2	2	2
305	12.0	10675	2400	2.6	1.72	3	3	2
382	15.0	13370	3006	3.2	2.16	3	3	2
458	18.0	16030	3604	3.8	2.59	4	4	2
534	21.0	18690	4202	4.5	3.01	4	4	2
610	24.0	21350	4799	5.1	3.44	5	5	3
687	27.0	24045	5405	5.8	3.88	5	5	3
763	30.0	26705	6003	6.4	4.31	6	6	3
839	33.0	29365	6601	7.0	4.74	6	6	3
915	36.0	32025	7199	7.7	5.17	7	7	4
992	39.1	34720	7805	8.3	5.60	7	7	4

Additional standard belt widths are available in steps of 76.3 mm (3.00 in). Additional non-standard belt widths are available in steps of 25.4 mm (1.00 in).

1983	78.1	69405	15602	16.7	11.19	14	14	7
------	------	-------	-------	------	-------	----	----	---

Additional standard belt widths are available in steps of 76.3 mm (3.00 in). Additional non-standard belt widths are available in steps of 25.4 mm (1.00 in).

2974	117.1	104090	23399	25.0	16.79	20	20	10
------	-------	--------	-------	------	-------	----	----	----

General belt tolerance is +0/-0.4% at 23°C/73°F and 50% RH. For exact belt width contact Customer Service. Non standard belt width on request.

*Max. Load per Drive Sprocket. Belt material: POM-SLF 2300 N (517 lbf), PP 1300 N (292 lbf).

**Max. Spacing between wear strips, Carry: 152 mm (6 in); Return: 304 mm (12 in).

= Single Link



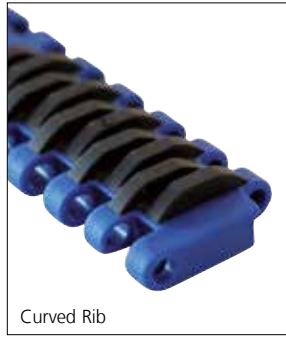
STANDARD

STRAIGHT RUNNING

PITCH 25.4 MM/1.00 IN

Accessories

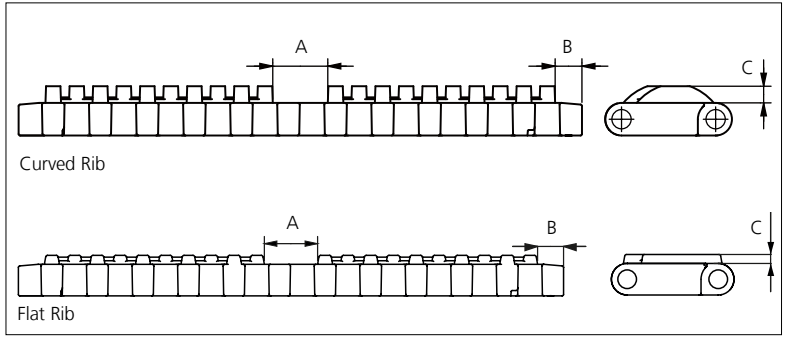
Rubber Top



Curved Rib



Flat Rib



Curved Rib

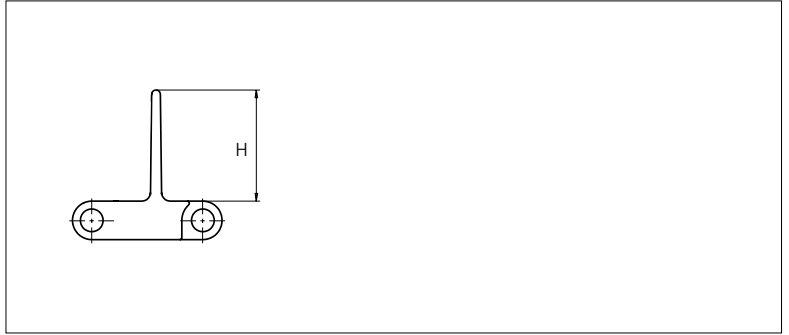
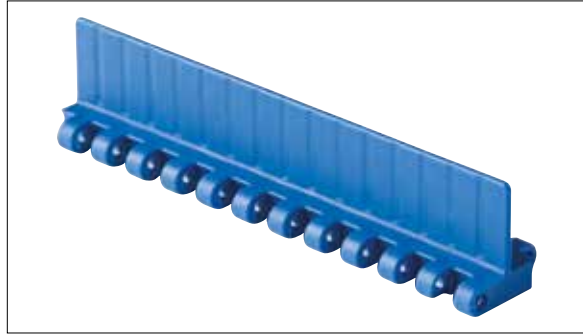
Flat Rib

Type	Belt Material & color	Rubber Material & color	A		B		C		Link size	Width	
			mm	in	mm	in	mm	in		mm	in
Curved Rib	PP B	03 K	14.9	0.59	7.3	0.29	4.5	0.18	K300	75.8	2.98
			K600	152.0	5.98						
Flat Rib	PP B	03 K	14.85	0.58	7.25	0.29	2.5	0.10	K300	75.8	2.98
			K600	152.0	5.98						

Non Standard material and color: See uni Material and Color Overview.

Accessories

Flight

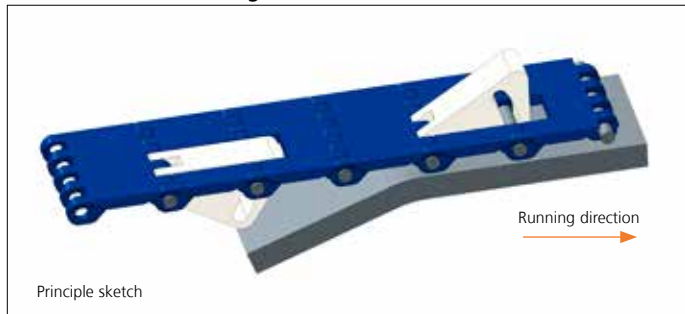


Type	Flight Material & color	H		Link size	Width		Indent	
		mm	in		mm	in	mm	in
Non Stick	PP-I B W	25.4	1.00	K600	152.0	5.98	0.0	0.00
	POM-SLF B							

Non Standard material and color: See uni Material and Color Overview.

Accessories

Non Standard uni AmFlight



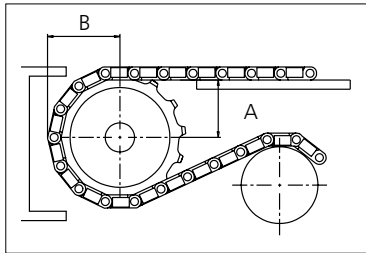
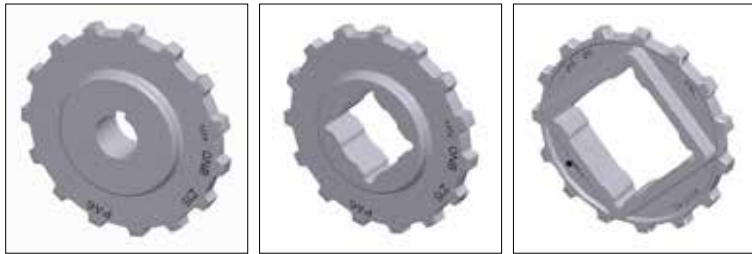
Principle sketch

Other Non Standard option: See uni AmFlight Overview.

Sprocket

No. of teeth	Pilot bore	Bore size									Overall diameter		Pitch diameter		Hub diameter		Dimension A		Dimension B		Single row/Two way	Double row/Two way	Molded PA6 LG	Machined PA6 N	
		in	1.00	1.18	1.25	1.50	1.57	2.36	2.50																
		mm	25.4	30.0	31.8	38.1	40.0	60.0	63.5	mm	in	mm	in	mm	in	mm	in	mm	in						
Z10	x		●	●	●	■	●				80.3	3.16	82.2	3.24	65.0	2.56	34.7	1.36	45.5	1.79	x		x		
Z12	x		●	●	●	■	■				96.8	3.81	98.1	3.86	70.0	2.76	43.0	1.69	53.5	2.11	x		x		
Z15	x			●	●	■	■	■	■	2	1	121.5	4.78	122.2	4.81	70.0 100.0 104.0	2.76 3.94 4.09	55.4	2.18	65.5	2.58	x		x	
Z18	x			●	●	■	■	■	■	2	1	146.0	5.75	146.3	5.76	70.0 104.0 120.0	2.76 4.09 4.72	67.6	2.66	77.5	3.05	x		x	
Z19	x			●	●	■	■	■	■	1	1	154.2	6.07	154.3	6.07	70.0 120.0	2.76 4.72	71.7	2.82	81.6	3.21	x		x	

● Moulded sprocket ■ Moulded sprocket ■ Moulded sprocket



Same sprocket type as for the uni QNB serie.
 Other sprocket sizes are available upon request.
 Two-part sprockets are available upon request.
 Round bores are always delivered with keyway.
 Other bore sizes are available upon request.
 uni Retainer Rings: See uni Retainer Ring data sheet.
 Width of tooth = 10.0 mm (0.39 in)
 Width of sprocket = 25.0 mm (0.98 in)

Max load per sprocket shown does not take bore size into account.
 Please also ensure that sufficient size shaft is chosen for corresponding load.

For correct sprocket position: See uni Assembly Instructions for uni QNB.
 For more detailed sprocket information, contact Customer Service.

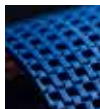
Non standard material and color: See uni Material and Color Overview.



Conveyor Belts



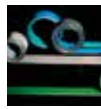
Seamless Belts



Modular Belts



Timing Belts



Transmission Belts



Fabrication & service

Expert advice, quality solutions
and local service
for all your belting needs
www.ammeraalbeltech.com

Ammeraal Beltech Modular A/S
Hjulgagervej 21
DK-7100 Vejle

T +45 7572 3100
F +45 7572 3348
admin@unichains.com
www.unichains.com

This information is subject to alteration due to continuous development. Ammeraal Beltech will not be held liable for the incorrect use of the above stated information. This information replaces previous information. All activities performed and services rendered by Ammeraal Beltech are subject to general terms and conditions of sale and delivery, as applied by its operating companies.

Local Contacts

Austria

T +43 171728 133
info-de@ammeraalbeltech.com
www.ammeraalbeltech.at

Belgium

T +32 2 466 03 00
info-be@ammeraalbeltech.com
www.ammeraalbeltech.be

Canada

T +1 905 890 1311
info-ca@ammeraalbeltech.com
www.ammeraalbeltech.com

Chile

T +56 2 233 12900
info-cl@ammeraalbeltech.com
www.ammeraalbeltech.cl

China

T +86 512 8287 2709
info-cn@ammeraalbeltech.com
www.ammeraalbeltech.com.cn

Czech Republic

T +420 567 117 211
info-cz@ammeraalbeltech.com
www.ammeraalbeltech.cz

Denmark

T + 45 7572 3100
info-dk@ammeraalbeltech.com
www.unichains.com

Finland

T +358 207 911 400
info-fi@ammeraalbeltech.com
www.ammeraalbeltech.fi

France

T +33 3 20 90 36 00
info-fr@ammeraalbeltech.com
www.ammeraalbeltech.fr

Germany

T +49 4152 937-0
info-de@ammeraalbeltech.com
www.ammeraalbeltech.de

Hungary

T +36 30 311 6099
info-hu@ammeraalbeltech.com
www.ammeraalbeltech.hu

India

T +91 44 265 34 244
info-in@ammeraalbeltech.com
www.ammeraalbeltech.com

Italy

T +39 051 660 60 06
info-it@ammeraalbeltech.com
www.ammeraalbeltech.it

Luxembourg

T +352 26 48 38 56
info-lu@ammeraalbeltech.com
www.ammeraal-beltech.lu

Malaysia

T +60 3 806 188 49
info-my@ammeraalbeltech.com
www.ammeraalbeltech.com

Netherlands

T +31 72 57 51212
info-nl@ammeraalbeltech.com
www.ammeraalbeltech.nl

Poland

T +48 32 44 77 179
info-pl@ammeraalbeltech.com
www.ammeraalbeltech.com

Portugal

T +351 22 947 94 40
info-pt@ammeraalbeltech.com
www.ammeraalbeltech.pt

Singapore

T +65 62739767
info-sg@ammeraalbeltech.com
www.ammeraalbeltech.com

Slovakia

T +421 2 55648541-2
info-sk@ammeraalbeltech.com
www.ammeraalbeltech.sk

South Korea

T +82 31 448 3613-7
info-kr@ammeraalbeltech.com
www.ammeraalbeltech.co.kr

Spain

T +34 93 718 3054
info-es@ammeraalbeltech.com
www.ammeraalbeltech.es

Sweden

T +46 44 780 3010
info-se@ammeraalbeltech.com
www.ammeraalbeltech.se

Switzerland

T +41 55 2253 535
info-ch@ammeraalbeltech.com
www.ammeraalbeltech.ch

Thailand

T +66 2 902 2604-13
info-th@ammeraalbeltech.com
www.ammeraalbeltech.com

United Kingdom

T +44 1992 500550
info-uk@ammeraalbeltech.com
www.ammeraalbeltech.co.uk

United States

T +1 847 673 6720
info-us@ammeraalbeltech.com
www.ammeraalbeltech.com

Vietnam

T +84 8 376 562 05
info-vn@ammeraalbeltech.com
www.ammeraalbeltech.com.vn

Global Headquarters:

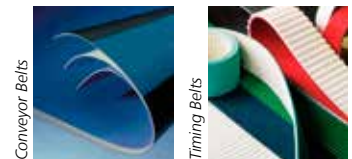
Ammeraal Beltech Holding B.V.

P.O. Box 38
1700 AA Heerhugowaard
The Netherlands

T +31 (0)72 575 1212
F +31 (0)72 571 6455

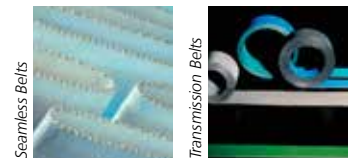
info@ammeraalbeltech.com
www.ammeraalbeltech.com

Expert advice, quality solutions
and local service
for all your belting needs



Conveyor Belts

Timing Belts



Seamless Belts

Transmission Belts



Modular Belts

Fabrication & service

... and 150 more service contact points on www.ammeraalbeltech.com