

# Ammeraal Beltech Modular

Innovative belt and chain solutions  
for every industry & application



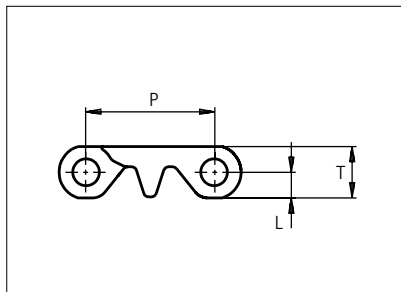
# Content

|                  |              |
|------------------|--------------|
| uni S-MPB C      | page 3 - 6   |
| uni S-MPB CS 22% | page 7 - 10  |
| uni S-MPB N      | page 11 - 14 |



# Plastic Modular Belt

Series **uni S-MPB** Type **C**



Straight running belt  
 Nominal pitch: 25.4 mm (1.00 in)  
 Surface type: Flat  
 Surface opening: Closed  
 Backflex radius: 23.0 mm (0.91 in)  
 Pin diameter: 5 mm (0.20 in)

| Belt material & color | POM-DI <span style="border: 1px solid black; padding: 0 2px;">W</span> | PP <span style="border: 1px solid black; padding: 0 2px;">W</span> | PP <span style="border: 1px solid black; padding: 0 2px;">B</span> | PE-I <span style="border: 1px solid black; padding: 0 2px;">B</span> <span style="border: 1px solid black; padding: 0 2px;">N</span> |                                                                    | mm   | in   |   | mm   | in   |   |   |   |
|-----------------------|------------------------------------------------------------------------|--------------------------------------------------------------------|--------------------------------------------------------------------|--------------------------------------------------------------------------------------------------------------------------------------|--------------------------------------------------------------------|------|------|---|------|------|---|---|---|
|                       |                                                                        |                                                                    |                                                                    |                                                                                                                                      | P (Nominal)                                                        | 25.4 | 1.00 | T | 10.3 | 0.41 |   |   |   |
| Pin material & color  | PP <span style="border: 1px solid black; padding: 0 2px;">W</span>     |                                                                    | PP <span style="border: 1px solid black; padding: 0 2px;">B</span> |                                                                                                                                      | PE <span style="border: 1px solid black; padding: 0 2px;">N</span> |      |      | L | 5.2  | 0.20 | - | - | - |

Non standard material and color: See uni Material and Color Overview.

Alternative pin and lock materials: Lockpin: PBT LG PA6.6 N D

| Belt width |      | Permissible tensile force (Belt/pin material) |      |       |      |         |      | Belt weight (Belt/pin material) |       |       |       |         |       | *Min. No. drive sprocket per shaft | Number of wear strips (Min. No.) |                |
|------------|------|-----------------------------------------------|------|-------|------|---------|------|---------------------------------|-------|-------|-------|---------|-------|------------------------------------|----------------------------------|----------------|
|            |      | POM-DI/PP                                     |      | PP/PP |      | PE-I/PP |      | POM-DI/PP                       |       | PP/PP |       | PE-I/PP |       |                                    | **Carry (pcs)                    | **Return (pcs) |
| mm         | in   | N                                             | lbf  | N     | lbf  | N       | lbf  | kg/m                            | lb/ft | kg/m  | lb/ft | kg/m    | lb/ft |                                    |                                  |                |
| 77         | 3.0  | 1810                                          | 407  | 732   | 164  | 604     | 136  | 0.6                             | 0.43  | 0.4   | 0.29  | 0.4     | 0.29  | 2                                  | 2                                | 2              |
| 153        | 6.0  | 3596                                          | 808  | 1454  | 327  | 1201    | 270  | 1.3                             | 0.85  | 0.9   | 0.58  | 0.9     | 0.59  | 2                                  | 2                                | 2              |
| 184        | 7.2  | 4317                                          | 971  | 1745  | 392  | 1442    | 324  | 1.5                             | 1.02  | 1.0   | 0.69  | 1.0     | 0.70  | 2                                  | 2                                | 2              |
| 229        | 9.0  | 5382                                          | 1210 | 2176  | 489  | 1798    | 404  | 1.9                             | 1.28  | 1.3   | 0.86  | 1.3     | 0.88  | 2                                  | 2                                | 2              |
| 305        | 12.0 | 7168                                          | 1611 | 2898  | 651  | 2394    | 538  | 2.5                             | 1.70  | 1.7   | 1.15  | 1.7     | 1.17  | 3                                  | 3                                | 2              |
| 381        | 15.0 | 8954                                          | 2013 | 3620  | 814  | 2991    | 672  | 3.2                             | 2.13  | 2.1   | 1.43  | 2.2     | 1.46  | 3                                  | 3                                | 2              |
| 457        | 18.0 | 10740                                         | 2414 | 4342  | 976  | 3588    | 806  | 3.8                             | 2.55  | 2.6   | 1.72  | 2.6     | 1.75  | 4                                  | 4                                | 2              |
| 507        | 20.0 | 11910                                         | 2677 | 4815  | 1082 | 3978    | 894  | 4.2                             | 2.83  | 2.8   | 1.91  | 2.9     | 1.94  | 4                                  | 4                                | 2              |
| 533        | 21.0 | 12527                                         | 2816 | 5064  | 1138 | 4184    | 941  | 4.4                             | 2.97  | 3.0   | 2.01  | 3.0     | 2.04  | 4                                  | 4                                | 2              |
| 609        | 24.0 | 14313                                         | 3218 | 5786  | 1301 | 4781    | 1075 | 5.1                             | 3.40  | 3.4   | 2.29  | 3.5     | 2.33  | 5                                  | 5                                | 3              |
| 685        | 27.0 | 16100                                         | 3619 | 6508  | 1463 | 5378    | 1209 | 5.7                             | 3.82  | 3.8   | 2.58  | 3.9     | 2.62  | 5                                  | 5                                | 3              |
| 761        | 30.0 | 17886                                         | 4021 | 7231  | 1625 | 5975    | 1343 | 6.3                             | 4.25  | 4.3   | 2.86  | 4.3     | 2.92  | 6                                  | 6                                | 3              |
| 837        | 33.0 | 19673                                         | 4422 | 7953  | 1788 | 6571    | 1477 | 6.9                             | 4.67  | 4.7   | 3.15  | 4.8     | 3.21  | 6                                  | 6                                | 3              |

Additional standard belt widths are available in steps of 76.0 mm (2.99 in). Additional non-standard belt widths are available in steps of 12.7 mm (0.50 in).

|      |      |       |       |       |      |       |      |      |       |      |      |      |      |    |    |   |
|------|------|-------|-------|-------|------|-------|------|------|-------|------|------|------|------|----|----|---|
| 1977 | 77.8 | 46460 | 10444 | 18782 | 4222 | 15519 | 3489 | 16.4 | 11.03 | 11.1 | 7.44 | 11.3 | 7.57 | 14 | 14 | 7 |
|------|------|-------|-------|-------|------|-------|------|------|-------|------|------|------|------|----|----|---|

Additional standard belt widths are available in steps of 76.0 mm (2.99 in). Additional non-standard belt widths are available in steps of 12.7 mm (0.50 in).

|      |       |       |       |       |      |       |      |      |       |      |       |      |       |    |    |    |
|------|-------|-------|-------|-------|------|-------|------|------|-------|------|-------|------|-------|----|----|----|
| 2965 | 116.7 | 69678 | 15664 | 28168 | 6332 | 23275 | 5232 | 24.6 | 16.54 | 16.6 | 11.16 | 16.9 | 11.36 | 20 | 20 | 10 |
|------|-------|-------|-------|-------|------|-------|------|------|-------|------|-------|------|-------|----|----|----|

General belt tolerance is +0/-0.4% at 23°C/73°F and 50% RH. For exact belt width contact Customer Service. Non standard belt width on request.

\*Max. Load per Drive Sprocket. Belt material: POM-DI 1100 N (247 lbf), PP 500 N (112 lbf), PE 500 N (112 lbf).

\*\*Max. Spacing between wear strips, Carry: 152 mm (6 in); Return: 304 mm (12 in).

  = Single Link



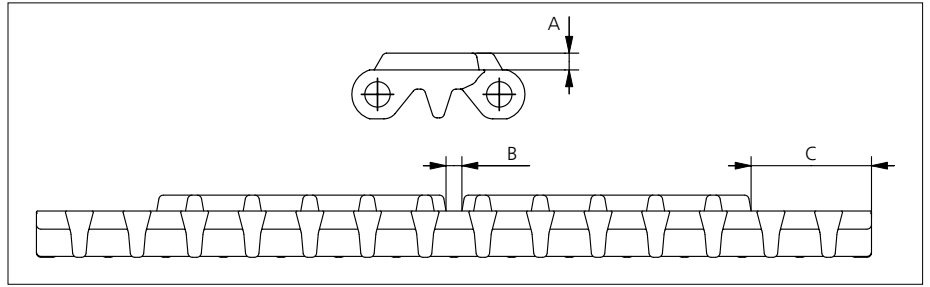
STANDARD

STRAIGHT RUNNING

PITCH 25.4 MM/1.00 IN

## Accessories

### Rubber Top

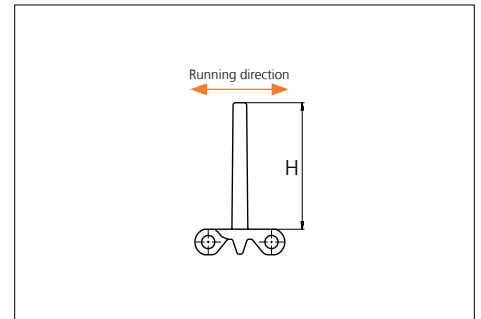
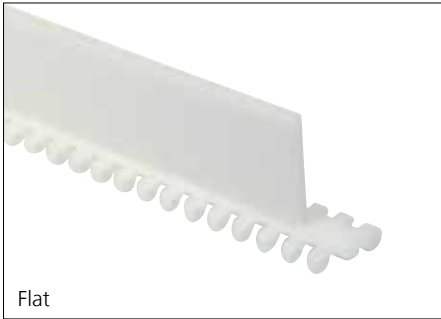


| Type | Belt material & color | Rubber material & color | A   |      | B   |      | C    |      | Link size | Width |      |
|------|-----------------------|-------------------------|-----|------|-----|------|------|------|-----------|-------|------|
|      |                       |                         | mm  | in   | mm  | in   | mm   | in   |           | mm    | in   |
| Flat | PP <b>W</b> <b>B</b>  | 03 <b>N</b> <b>K</b>    | 3.5 | 0.14 | 3.5 | 0.14 | 26.5 | 1.04 | K725      | 184.2 | 7.25 |

Non Standard material and color: See uni Material and Color Overview.

## Accessories

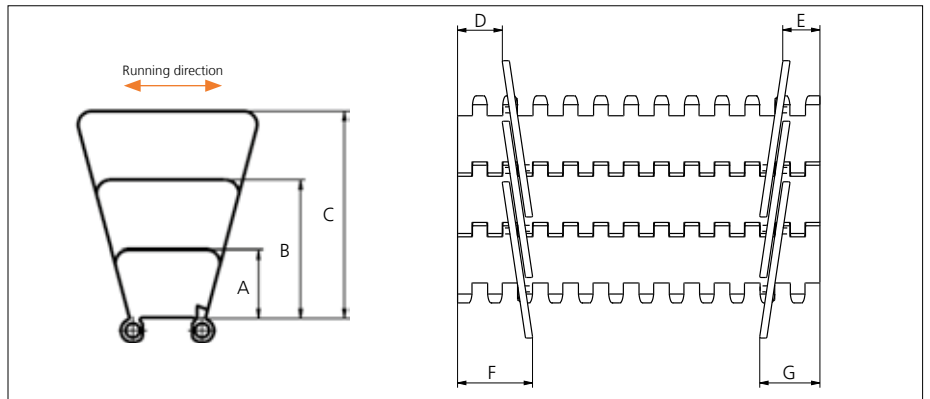
### Flight



| Type          | Material & color                                 | H    |      | Link size | Width |       | Indent both sides |      |
|---------------|--------------------------------------------------|------|------|-----------|-------|-------|-------------------|------|
|               |                                                  | mm   | in   |           | mm    | in    | mm                | in   |
| 13% Non Stick | POM-D <b>W</b>                                   | 76.2 | 3.00 | K600      | 151.9 | 5.98  | 00.0              | 0.00 |
| Flat          | PP-I <b>W</b> <b>B</b><br>PE-I <b>N</b> <b>B</b> | 50.8 | 2.00 | K2000     | 506.7 | 19.95 | 25.8              | 1.02 |

## Accessories

### Side Guard



| Type   | Material & color       | A    |      | B    |      | C    |      | D    |      | E    |      | F    |      | G    |      |
|--------|------------------------|------|------|------|------|------|------|------|------|------|------|------|------|------|------|
|        |                        | mm   | in   | mm   | in   | mm   | in   | mm   | in   | mm   | in   | mm   | in   | mm   | in   |
| Closed | PP-I <b>W</b> <b>B</b> | 25.4 | 1.00 | 50.8 | 2.00 | 76.2 | 3.00 | 12.5 | 0.49 | 18.5 | 0.73 | 25.5 | 1.00 | 31.5 | 1.24 |

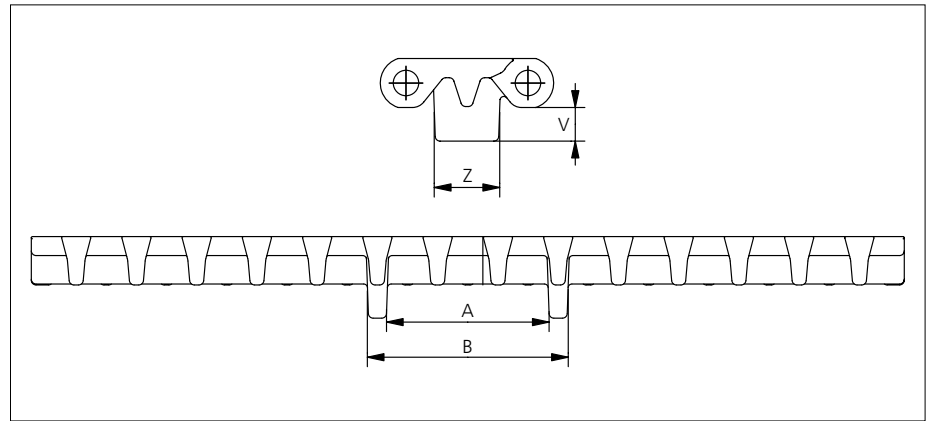
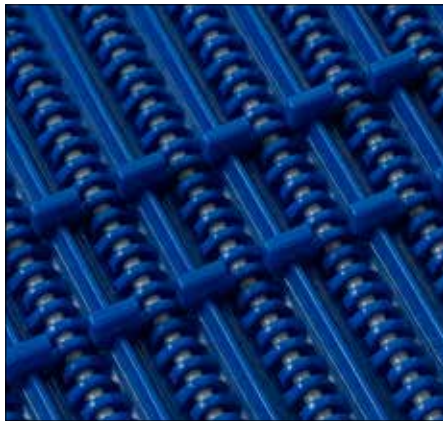
Minimum indent to outside of side guide: 14.0 mm (0.55 in). Increment 6.4 mm (0.25).

Non Standard material and color: See uni Material and Color Overview.

Backflex radius for Side Guide: 75.0 mm (2.95 in).

## Accessories

### Tab

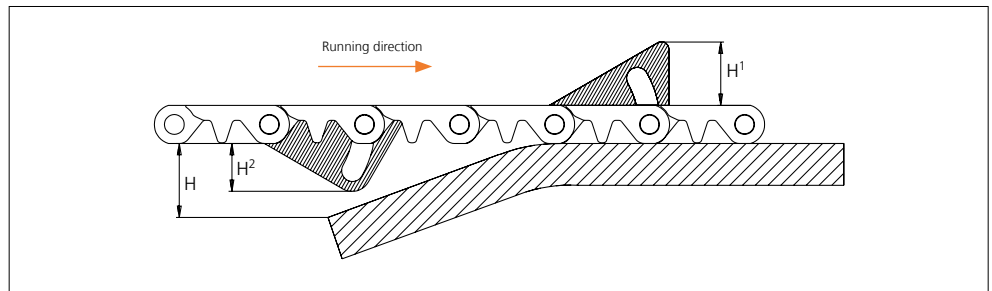
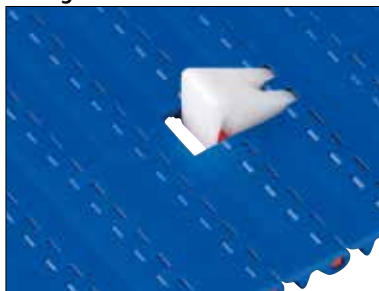


| Type         | Belt material & color            | V   |      | Z    |      | A    |      | B    |      | Link size | Width |      |
|--------------|----------------------------------|-----|------|------|------|------|------|------|------|-----------|-------|------|
|              |                                  | mm  | in   | mm   | in   | mm   | in   | mm   | in   |           | mm    | in   |
| Bottom Guide | POM-DI <b>W</b><br>PP <b>W B</b> | 7.0 | 0.28 | 13.9 | 0.55 | 33.4 | 1.31 | 42.8 | 1.69 | K725      | 184.2 | 7.25 |

Non Standard material and color: See uni Material and Color Overview.

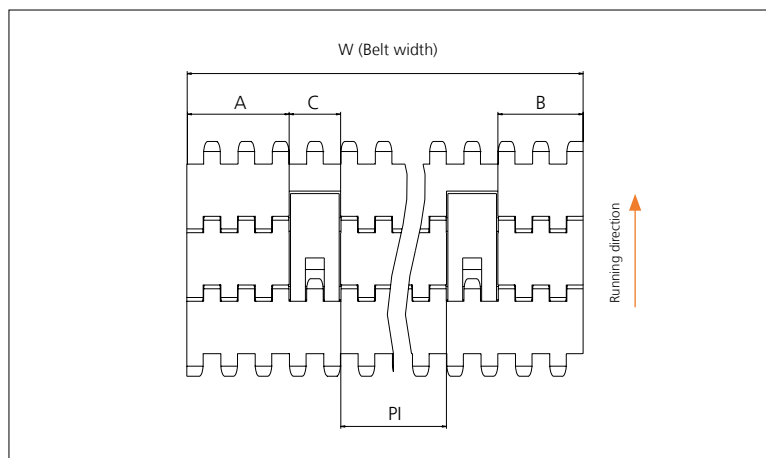
## Accessories

### AmFlight



| Type | Material & color | H    |      | H <sup>1</sup> |      | H <sup>2</sup> |      |
|------|------------------|------|------|----------------|------|----------------|------|
|      |                  | mm   | in   | mm             | in   | mm             | in   |
| Push | PE <b>W</b>      | 17.0 | 0.67 | 17.0           | 0.67 | 13.3           | 0.52 |

Other Non Standard option: See uni AmFlight Overview.



|               | mm        | in       |
|---------------|-----------|----------|
| <b>A min</b>  | 38.4      | 1.51     |
| <b>B min</b>  | 32.1      | 1.26     |
| <b>C</b>      | 18.0      | 0.71     |
| <b>PI max</b> | W - 106.5 | W - 4.19 |
| <b>PI min</b> | 32.8      | 1.29     |

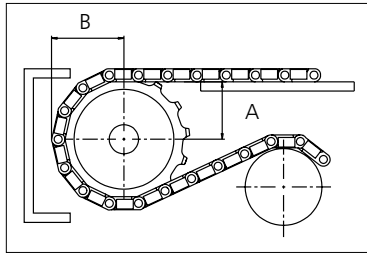
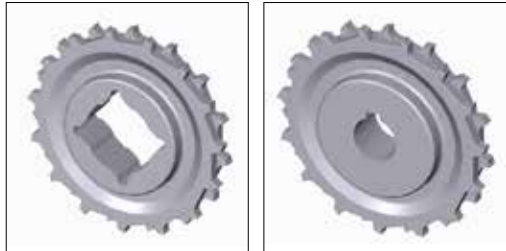
Increment: 12.7 mm (0.50 in).

## Sprocket

| No. of teeth | Bore size  |    |       |       |       |       |       |       |       |       |       |       |       | Overall diameter |       | Pitch diameter |    | Hub-diameter |       | A-dimension |       | B-dimension |          | Single row/Two way | Double row/Two way | Molded PA6 LG | Machined PA6 N |
|--------------|------------|----|-------|-------|-------|-------|-------|-------|-------|-------|-------|-------|-------|------------------|-------|----------------|----|--------------|-------|-------------|-------|-------------|----------|--------------------|--------------------|---------------|----------------|
|              | Pilot bore |    | 0.75  | 0.78  | 0.98  | 1.00  | 1.18  | 1.25  | 1.50  | 1.57  | 2.36  | 2.50  | 3.54  |                  |       |                |    |              |       |             |       |             |          |                    |                    |               |                |
|              | mm         | in | 19.05 | 20.00 | 25.00 | 25.40 | 30.00 | 31.75 | 38.10 | 40.00 | 60.00 | 63.50 | 90.00 | mm               | in    | mm             | in | mm           | in    | mm          | in    | Molded      | Machined |                    |                    |               |                |
| Z06          | x          |    | ●     | ●     |       |       |       |       |       |       |       |       | 48.9  | 1.92             | 50.8  | 2.00           | 33 | 1.30         | 16.9  | 0.67        | 30,75 | 1.21        |          | x                  | x                  |               |                |
| Z08          | x          |    |       |       |       | ●     | ●     | ●     |       |       |       |       | 65.6  | 2.58             | 66.4  | 2.61           | 50 | 1.97         | 25.56 | 1.01        | 38,53 | 1.51        |          | x                  | x                  |               |                |
| Z10          | x          |    |       |       |       | ●     | ●     | ●     |       | ●     |       |       | 82.2  | 3.23             | 82.2  | 3.24           | 66 | 2.6          | 34    | 1.34        | 46,44 | 1.82        |          | x                  | x                  |               |                |
| Z12          | x          |    |       |       |       | ●     | ●     | ●     |       | ●     | ■     |       | 98.6  | 3.88             | 98.1  | 3.86           | 70 | 2.76         | 42.3  | 1.67        | 54,42 | 2.14        |          | x                  | x                  |               |                |
| Z15          | x          |    |       |       |       | ●     | ●     | ●     | ■     | ●     | ■     | ■     | 123.1 | 4.84             | 122.2 | 4.81           | 70 | 2.76         | 54.54 | 2.15        | 66.43 | 2.62        |          | x                  | x                  |               |                |
| Z20          | x          |    |       |       |       |       |       | ●     | ●     | ●     | ■     | ■     | 163.8 | 6.44             | 162.4 | 6.39           | 70 | 2.76         | 75.08 | 2.96        | 86.53 | 3.41        |          | x                  | x                  |               |                |

■ Molded sprocket

● Molded sprocket



Other sprocket sizes are available upon request  
 Two-part sprocket are available upon request  
 Round bores are always delivered with keyway.  
 Other bore sizes are available upon request.  
 uni Retainer Rings: See uni Retainer Ring data sheet  
 Width of tooth = 12.7 mm (0.50 in)  
 Width of sprocket = 25.0 mm (0.98 in)

Max load per sprocket shown does not take bore size into account.  
 Please also ensure that sufficient size shaft is chosen for corresponding load.

For correct sprocket position: See uni Assembly Instructions for uni S-MPB.  
 For more detailed sprocket information, contact Customer Service.

Non standard material and color: See uni Material and Color Overview.

uni S-MPB C/150204



Expert advice, quality solutions and local service for all your belting needs  
[www.ammeraalbeltech.com](http://www.ammeraalbeltech.com)

**Ammeraal Beltech Modular A/S**  
 Hjulmagervej 21  
 DK-7100 Vejle

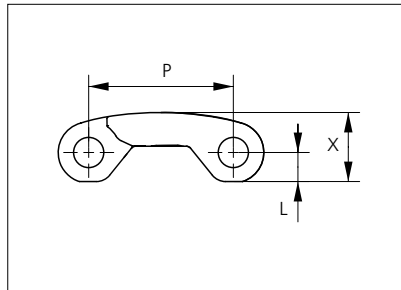
T +45 7572 3100  
 F +45 7572 3348  
 admin@unichains.com  
 www.unichains.com

This information is subject to alteration due to continuous development. Ammeraal Beltech will not be held liable for the incorrect use of the above stated information. This information replaces previous information. All activities performed and services rendered by Ammeraal Beltech are subject to general terms and conditions of sale and delivery, as applied by its operating companies.



# Plastic Modular Belt

Series **uni S-MPB** Type **22% CS**



Straight running belt  
 Nominal pitch: 25.4 mm (1.00 in)  
 Surface type: Curved Surface  
 Surface opening: 22%  
 Backflex radius: 23.0 mm (0.91 in)  
 Pin diameter: 5 mm (0.20 in)

| Belt material & color | POM-DI <span style="border: 1px solid black; padding: 0 2px;">W</span> | PP <span style="border: 1px solid black; padding: 0 2px;">W</span> | PP <span style="border: 1px solid black; padding: 0 2px;">B</span>    | PE-I <span style="border: 1px solid black; padding: 0 2px;">B</span> <span style="border: 1px solid black; padding: 0 2px;">N</span> |                                                                       | mm   | in   |          | mm   | in   |
|-----------------------|------------------------------------------------------------------------|--------------------------------------------------------------------|-----------------------------------------------------------------------|--------------------------------------------------------------------------------------------------------------------------------------|-----------------------------------------------------------------------|------|------|----------|------|------|
|                       |                                                                        |                                                                    |                                                                       |                                                                                                                                      | <b>P (Nominal)</b>                                                    | 25.4 | 1.00 | <b>X</b> | 12.1 | 0.48 |
| Pin material & color  | ⚙️ PP <span style="border: 1px solid black; padding: 0 2px;">W</span>  |                                                                    | ⚙️ PP <span style="border: 1px solid black; padding: 0 2px;">B</span> |                                                                                                                                      | ⚙️ PE <span style="border: 1px solid black; padding: 0 2px;">N</span> |      |      |          |      |      |
|                       |                                                                        |                                                                    |                                                                       |                                                                                                                                      | <b>L</b>                                                              | 5.2  | 0.20 | -        | -    | -    |

Non standard material and color: See uni Material and Color Overview.

Alternative pin and lock materials: ⚙️ Lockpin: PBT LG PA6.6 N D

| Belt width |      | Permissible tensile force (Belt/pin material) |      |       |      |         |      | Belt weight (Belt/pin material) |       |       |       |         |       | *Min. No. drive sprocket per shaft | Number of wear strips (Min. No.) |                |
|------------|------|-----------------------------------------------|------|-------|------|---------|------|---------------------------------|-------|-------|-------|---------|-------|------------------------------------|----------------------------------|----------------|
|            |      | POM-DI/PP                                     |      | PP/PP |      | PE-I/PE |      | POM-DI/PP                       |       | PP/PP |       | PE-I/PE |       |                                    | **Carry (pcs)                    | **Return (pcs) |
| mm         | in   | N                                             | lbf  | N     | lbf  | N       | lbf  | kg/m                            | lb/ft | kg/m  | lb/ft | kg/m    | lb/ft |                                    |                                  |                |
| 77         | 3.0  | 1810                                          | 407  | 732   | 164  | 604     | 136  | 0.5                             | 0.36  | 0.4   | 0.24  | 0.4     | 0.24  | 2                                  | 2                                | 2              |
| 153        | 6.0  | 3596                                          | 808  | 1454  | 327  | 1201    | 270  | 1.1                             | 0.72  | 0.7   | 0.48  | 0.7     | 0.48  | 2                                  | 2                                | 2              |
| 229        | 9.0  | 5383                                          | 1210 | 2176  | 489  | 1798    | 404  | 1.6                             | 1.08  | 1.1   | 0.72  | 1.1     | 0.72  | 2                                  | 2                                | 2              |
| 305        | 12.0 | 7169                                          | 1612 | 2898  | 652  | 2395    | 538  | 2.1                             | 1.44  | 1.4   | 0.96  | 1.4     | 0.96  | 3                                  | 3                                | 2              |
| 381        | 15.0 | 8956                                          | 2013 | 3620  | 814  | 2992    | 672  | 2.7                             | 1.79  | 1.8   | 1.20  | 1.8     | 1.20  | 3                                  | 3                                | 2              |
| 457        | 18.0 | 10742                                         | 2415 | 4343  | 976  | 3588    | 807  | 3.2                             | 2.15  | 2.1   | 1.44  | 2.1     | 1.44  | 4                                  | 4                                | 2              |
| 533        | 21.0 | 12529                                         | 2816 | 5065  | 1139 | 4185    | 941  | 3.7                             | 2.51  | 2.5   | 1.68  | 2.5     | 1.68  | 4                                  | 4                                | 2              |
| 609        | 24.0 | 14315                                         | 3218 | 5787  | 1301 | 4782    | 1075 | 4.3                             | 2.87  | 2.9   | 1.92  | 2.9     | 1.92  | 5                                  | 5                                | 3              |
| 685        | 27.0 | 16102                                         | 3620 | 6509  | 1463 | 5379    | 1209 | 4.8                             | 3.22  | 3.2   | 2.16  | 3.2     | 2.16  | 5                                  | 5                                | 3              |
| 761        | 30.0 | 17888                                         | 4021 | 7231  | 1626 | 5975    | 1343 | 5.3                             | 3.58  | 3.6   | 2.40  | 3.6     | 2.40  | 6                                  | 6                                | 3              |
| 837        | 33.0 | 19675                                         | 4423 | 7954  | 1788 | 6572    | 1477 | 5.9                             | 3.94  | 3.9   | 2.64  | 3.9     | 2.64  | 6                                  | 6                                | 3              |
| 913        | 36.0 | 21461                                         | 4824 | 8676  | 1950 | 7169    | 1612 | 6.4                             | 4.30  | 4.3   | 2.88  | 4.3     | 2.88  | 7                                  | 7                                | 4              |
| 989        | 38.9 | 23248                                         | 5226 | 9398  | 2113 | 7766    | 1746 | 6.9                             | 4.65  | 4.6   | 3.12  | 4.6     | 3.12  | 7                                  | 7                                | 4              |

Additional standard belt widths are available in steps of 76.0 mm (2.99 in). Additional non-standard belt widths are available in steps of 12.7 mm (0.50 in).

|      |      |       |       |       |      |       |      |      |      |     |      |     |      |    |    |   |
|------|------|-------|-------|-------|------|-------|------|------|------|-----|------|-----|------|----|----|---|
| 1977 | 77.8 | 46460 | 10444 | 18782 | 4222 | 15519 | 3489 | 13.8 | 9.30 | 9.3 | 6.24 | 9.3 | 6.24 | 14 | 14 | 7 |
|------|------|-------|-------|-------|------|-------|------|------|------|-----|------|-----|------|----|----|---|

Additional standard belt widths are available in steps of 76.0 mm (2.99 in). Additional non-standard belt widths are available in steps of 12.7 mm (0.50 in).

|      |       |       |       |       |      |       |      |      |       |      |      |      |      |    |    |    |
|------|-------|-------|-------|-------|------|-------|------|------|-------|------|------|------|------|----|----|----|
| 2965 | 116.7 | 69678 | 15664 | 28168 | 6332 | 23275 | 5232 | 20.8 | 13.95 | 13.9 | 9.37 | 13.9 | 9.37 | 20 | 20 | 10 |
|------|-------|-------|-------|-------|------|-------|------|------|-------|------|------|------|------|----|----|----|

General belt tolerance is +0/-0.4% at 23°C/73°F and 50% RH. For exact belt width contact Customer Service. Non standard belt width on request.

\*Max. Load per Drive Sprocket. Belt material: POM-DI 1100 N (247 lbf), PP 500 N (112 lbf), PE 500 N (112 lbf).

\*\*Max. Spacing between wear strips, Carry: 152 mm (6 in); Return: 304 mm (12 in).

  = Single Link



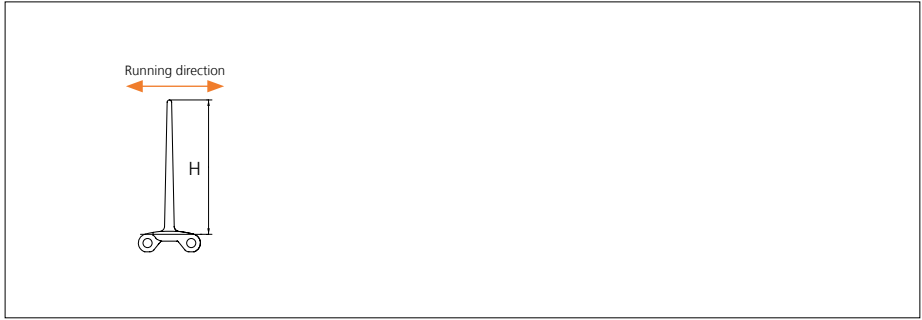
STANDARD

STRAIGHT RUNNING

PITCH 25.4 MM/1.00 IN

## Accessories

### Flight



| Type    | Material & color                                                                                                                                                                              | H    |      | Link size | Width |      | Indent both sides |      |
|---------|-----------------------------------------------------------------------------------------------------------------------------------------------------------------------------------------------|------|------|-----------|-------|------|-------------------|------|
|         |                                                                                                                                                                                               | mm   | in   |           | mm    | in   | mm                | in   |
| CS Flat | POM-D <input type="checkbox"/> W<br>PP-I <input type="checkbox"/> W <input checked="" type="checkbox"/> B<br>PE-I <input checked="" type="checkbox"/> N <input checked="" type="checkbox"/> B | 76.2 | 3.00 | K600      | 151.9 | 5.98 | 00.0              | 0.00 |

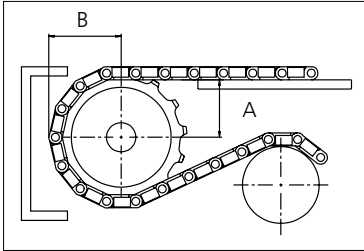
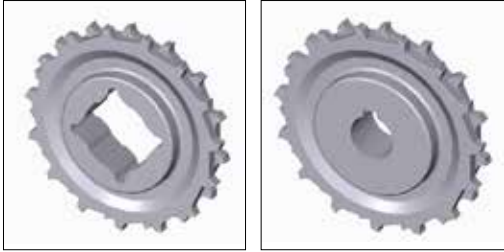


# Sprocket

| No. of teeth | Pilot bore | Bore size |       |       |       |       |       |       |       |       |       |       | Overall diameter |      | Pitch diameter |      | Hub-diameter |      | A-dimension |      | B-dimension |      | Single row/Two way | Double row/Two way | Molded PA6 LG | Machined PA6 N |       |
|--------------|------------|-----------|-------|-------|-------|-------|-------|-------|-------|-------|-------|-------|------------------|------|----------------|------|--------------|------|-------------|------|-------------|------|--------------------|--------------------|---------------|----------------|-------|
|              |            | mm        | 19.05 | 20.00 | 25.00 | 25.40 | 30.00 | 31.75 | 38.10 | 40.00 | 60.00 | 63.50 |                  |      |                |      |              |      |             |      |             |      |                    |                    |               |                | 90.00 |
|              |            | in        | 0.75  | 0.78  | 0.98  | 1.00  | 1.18  | 1.25  | 1.50  | 1.57  | 2.36  | 2.50  | 3.54             |      |                |      |              |      |             |      |             |      |                    |                    |               |                |       |
| Z06          | x          |           | ●     | ●     |       |       |       |       |       |       |       |       | 48.9             | 1.92 | 50.8           | 2.00 | 33           | 1.30 | 16.9        | 0.67 | 30,75       | 1.21 |                    | x                  | x             |                |       |
| Z08          | x          |           |       |       |       | ●     | ●     | ●     |       |       |       |       | 65.6             | 2.58 | 66.4           | 2.61 | 50           | 1.97 | 25.56       | 1.01 | 38,53       | 1.51 |                    | x                  | x             |                |       |
| Z10          | x          |           |       |       |       | ●     | ●     | ●     |       |       | ●     |       | 82.2             | 3.23 | 82.2           | 3.24 | 66           | 2.6  | 34          | 1.34 | 46,44       | 1.82 |                    | x                  | x             |                |       |
| Z12          | x          |           |       |       |       | ●     | ●     | ●     |       |       | ●     | ■     | 98.6             | 3.88 | 98.1           | 3.86 | 70           | 2.76 | 42.3        | 1.67 | 54.42       | 2.14 |                    | x                  | x             |                |       |
| Z15          | x          |           |       |       |       | ●     | ●     | ●     | ■     |       | ●     | ■     | 123.1            | 4.84 | 122.2          | 4.81 | 70           | 2.76 | 54.54       | 2.15 | 66.43       | 2.62 |                    | x                  | x             |                |       |
| Z20          | x          |           |       |       |       |       |       | ●     | ■     |       | ●     | ■     | 163.8            | 6.44 | 162.4          | 6.39 | 70           | 2.76 | 75.08       | 2.96 | 86.53       | 3.41 |                    | x                  | x             |                |       |

■ Molded sprocket

● Molded sprocket



Non standard material and color: See uni Material and Color Overview.

Other sprocket sizes are available upon request  
 Two-part sprocket are available upon request  
 Round bores are always delivered with keyway.  
 Other bore sizes are available upon request.  
 uni Retainer Rings: See uni Retainer Ring data sheet  
 Width of tooth = 12.7 mm (0.50 in)  
 Width of sprocket = 25.0 mm (0.98 in)

Max load per sprocket shown does not take bore size into account.  
 Please also ensure that sufficient size shaft is chosen for corresponding load.

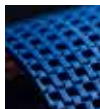
For correct sprocket position: See uni Assembly Instructions for uni S-MPB.  
 For more detailed sprocket information, contact Customer Service.



Conveyor Belts



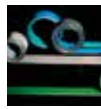
Seamless Belts



Modular Belts



Timing Belts



Transmission Belts



Fabrication & service

Expert advice, quality solutions  
and local service  
for all your belting needs  
[www.ammeraalbeltech.com](http://www.ammeraalbeltech.com)

**Ammeraal Beltech Modular A/S**  
Hjulgagervej 21  
DK-7100 Vejle

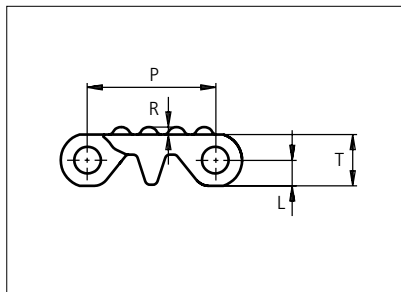
T +45 7572 3100  
F +45 7572 3348  
[admin@unichains.com](mailto:admin@unichains.com)  
[www.unichains.com](http://www.unichains.com)

This information is subject to alteration due to continuous development. Ammeraal Beltech will not be held liable for the incorrect use of the above stated information. This information replaces previous information. All activities performed and services rendered by Ammeraal Beltech are subject to general terms and conditions of sale and delivery, as applied by its operating companies.



# Plastic Modular Belt

Series **uni S-MPB** Type **N**



Straight running belt  
 Nominal pitch: 25.4 mm (1.00 in)  
 Surface type: No Cling  
 Surface opening: Closed  
 Backflex radius: 23.0 mm (0.91 in)  
 Pin diameter: 5 mm (0.20 in)

|                                  |                 |               |               |
|----------------------------------|-----------------|---------------|---------------|
| <b>Belt material &amp; color</b> | POM-DI <b>W</b> | PE-I <b>N</b> | PE-I <b>B</b> |
| <b>Pin material &amp; color</b>  | PP <b>W</b>     | PE <b>N</b>   | PE <b>N</b>   |

|                    |           |           |          |           |           |
|--------------------|-----------|-----------|----------|-----------|-----------|
|                    | <b>mm</b> | <b>in</b> |          | <b>mm</b> | <b>in</b> |
| <b>P (Nominal)</b> | 25.4      | 1.00      | <b>L</b> | 5.20      | 0.20      |
| <b>R</b>           | 1.50      | 0.06      | <b>T</b> | 10.3      | 0.41      |

Non standard material and color: See uni Material and Color Overview.

Alternative pin and lock materials: Lockpin: PBT **LG** PA6.6 **D** **N** PP **B**

\*Single Link K2000 is available with a molded indent of 38.6mm(1.52in) in both sides.

| Belt width |      | Permissible tensile force (Belt/pin material) |      |         |      | Belt weight (Belt/pin material) |       |         |       | *Min. No. drive sprocket per shaft | Number of wear strips (Min. No.) |                |
|------------|------|-----------------------------------------------|------|---------|------|---------------------------------|-------|---------|-------|------------------------------------|----------------------------------|----------------|
|            |      | POM-DI/PP                                     |      | PE-I/PE |      | POM-DI/PP                       |       | PE-I/PE |       |                                    | **Carry (pcs)                    | **Return (pcs) |
| mm         | in   | N                                             | lbf  | N       | lbf  | kg/m                            | lb/ft | kg/m    | lb/ft |                                    |                                  |                |
| 77         | 3.0  | 1810                                          | 407  | 604     | 136  | 0.6                             | 0.43  | 0.4     | 0.29  | 2                                  | 2                                | 2              |
| 153        | 6.0  | 3596                                          | 808  | 1201    | 270  | 1.3                             | 0.85  | 0.9     | 0.59  | 2                                  | 2                                | 2              |
| 229        | 9.0  | 5383                                          | 1210 | 1798    | 404  | 1.9                             | 1.28  | 1.3     | 0.88  | 2                                  | 2                                | 2              |
| 305        | 12.0 | 7169                                          | 1612 | 2395    | 538  | 2.5                             | 1.70  | 1.7     | 1.17  | 3                                  | 3                                | 2              |
| 381        | 15.0 | 8956                                          | 2013 | 2992    | 672  | 3.2                             | 2.13  | 2.2     | 1.46  | 3                                  | 3                                | 2              |
| 457        | 18.0 | 10742                                         | 2415 | 3588    | 807  | 3.8                             | 2.55  | 2.6     | 1.75  | 4                                  | 4                                | 2              |
| 507*       | 20.0 | 11910                                         | 2677 | 3978    | 894  | 4.2                             | 2.83  | 2.9     | 1.94  | 4                                  | 4                                | 2              |
| 533        | 21.0 | 12529                                         | 2816 | 4185    | 941  | 4.4                             | 2.97  | 3.0     | 2.04  | 4                                  | 4                                | 2              |
| 609        | 24.0 | 14315                                         | 3218 | 4782    | 1075 | 5.1                             | 3.40  | 3.5     | 2.33  | 5                                  | 5                                | 3              |
| 685        | 27.0 | 16102                                         | 3620 | 5379    | 1209 | 5.7                             | 3.82  | 3.9     | 2.62  | 5                                  | 5                                | 3              |
| 761        | 30.0 | 17888                                         | 4021 | 5975    | 1343 | 6.3                             | 4.25  | 4.3     | 2.92  | 6                                  | 6                                | 3              |
| 837        | 33.0 | 19675                                         | 4423 | 6572    | 1477 | 6.9                             | 4.67  | 4.8     | 3.21  | 6                                  | 6                                | 3              |
| 913        | 36.0 | 21461                                         | 4824 | 7169    | 1612 | 7.6                             | 5.09  | 5.2     | 3.50  | 7                                  | 7                                | 4              |

Additional standard belt widths are available in steps of 76.0 mm (2.99 in). Additional non-standard belt widths are available in steps of 12.7 mm (0.50 in).

|      |      |       |       |       |      |      |       |      |      |    |    |   |
|------|------|-------|-------|-------|------|------|-------|------|------|----|----|---|
| 1977 | 77.8 | 46460 | 10444 | 15519 | 3489 | 16.4 | 11.03 | 11.3 | 7.57 | 14 | 14 | 7 |
|------|------|-------|-------|-------|------|------|-------|------|------|----|----|---|

Additional standard belt widths are available in steps of 76.0 mm (2.99 in). Additional non-standard belt widths are available in steps of 12.7 mm (0.50 in).

|      |       |       |       |       |      |      |       |      |       |    |    |    |
|------|-------|-------|-------|-------|------|------|-------|------|-------|----|----|----|
| 2965 | 116.7 | 69678 | 15664 | 23275 | 5232 | 24.6 | 16.54 | 16.9 | 11.36 | 20 | 20 | 10 |
|------|-------|-------|-------|-------|------|------|-------|------|-------|----|----|----|

General belt tolerance is +0/-0.4% at 23°C/73°F and 50% RH. For exact belt width contact Customer Service. Non standard belt width on request.

\*Max. Load per Drive Sprocket. Belt material: POM-DI 1100 N (247 lbf), PE 500 N (112 lbf).

\*\*Max. Spacing between wear strips, Carry: 152 mm (6 in); Return: 304 mm (12 in)

□ = Single Link



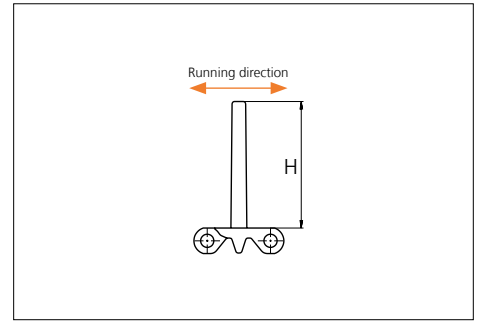
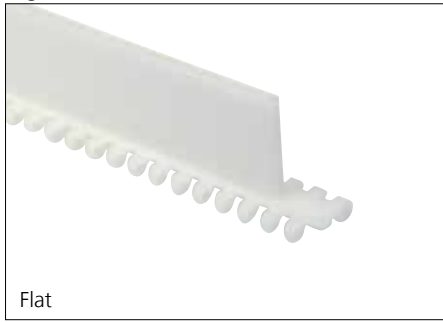
STANDARD

STRAIGHT RUNNING

PITCH 25.4 MM/1.00 IN

## Accessories

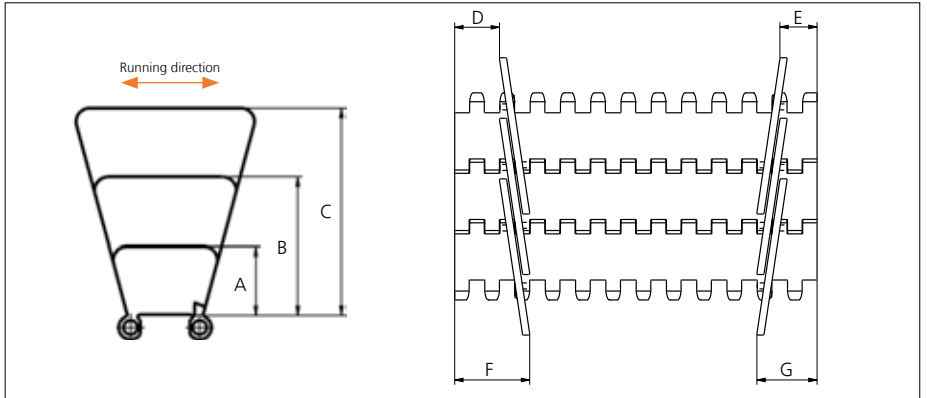
### Flight



| Type          | Material & color       | H    |      | Link size | Width |       | Indent both sides |      |
|---------------|------------------------|------|------|-----------|-------|-------|-------------------|------|
|               |                        | mm   | in   |           | mm    | in    | mm                | in   |
| 13% Non Stick | POM-D <b>W</b>         | 76.2 | 3.00 | K600      | 151.9 | 5.98  | 00.0              | 0.00 |
| Flat          | PP-I <b>W</b> <b>B</b> | 50.8 | 2.00 | K2000     | 506.7 | 19.95 | 25.8              | 1.02 |
|               | PE-I <b>N</b> <b>B</b> |      |      |           |       |       |                   |      |

## Accessories

### Side Guide



| Type   | Material & color       | A    |      | B    |      | C    |      | D    |      | E    |      | F    |      | G    |      |
|--------|------------------------|------|------|------|------|------|------|------|------|------|------|------|------|------|------|
|        |                        | mm   | in   | mm   | in   | mm   | in   | mm   | in   | mm   | in   | mm   | in   | mm   | in   |
| Closed | PP-I <b>W</b> <b>B</b> | 25.4 | 1.00 | 50.8 | 2.00 | 76.2 | 3.00 | 12.5 | 0.49 | 18.5 | 0.73 | 25.5 | 1.00 | 31.5 | 1.24 |

Minimum indent to outside of side guide: 14.0 mm (0.55 in). Increment 6.4 mm (0.25).

Non Standard material and color: See uni Material and Color Overview.

Backflex radius for Side Guide: 75.0 mm (2.95 in).





Conveyor Belts



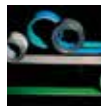
Seamless Belts



Modular Belts



Timing Belts



Transmission Belts



Fabrication & service

Expert advice, quality solutions and local service for all your belting needs  
[www.ammeraalbeltech.com](http://www.ammeraalbeltech.com)

**Ammeraal Beltech Modular A/S**  
Hjulgagervej 21  
DK-7100 Vejle

T +45 7572 3100  
F +45 7572 3348  
admin@unichains.com  
www.unichains.com

This information is subject to alteration due to continuous development. Ammeraal Beltech will not be held liable for the incorrect use of the above stated information. This information replaces previous information. All activities performed and services rendered by Ammeraal Beltech are subject to general terms and conditions of sale and delivery, as applied by its operating companies.

# Local Contacts

## Austria

T +43 171728 133  
info-de@ammeraalbeltech.com  
www.ammeraalbeltech.at

## Belgium

T +32 2 466 03 00  
info-be@ammeraalbeltech.com  
www.ammeraalbeltech.be

## Canada

T +1 905 890 1311  
info-ca@ammeraalbeltech.com  
www.ammeraalbeltech.com

## Chile

T +56 2 233 12900  
info-cl@ammeraalbeltech.com  
www.ammeraalbeltech.cl

## China

T +86 512 8287 2709  
info-cn@ammeraalbeltech.com  
www.ammeraalbeltech.com.cn

## Czech Republic

T +420 567 117 211  
info-cz@ammeraalbeltech.com  
www.ammeraalbeltech.cz

## Denmark

T + 45 7572 3100  
info-dk@ammeraalbeltech.com  
www.unichains.com

## Finland

T +358 207 911 400  
info-fi@ammeraalbeltech.com  
www.ammeraalbeltech.fi

## France

T +33 3 20 90 36 00  
info-fr@ammeraalbeltech.com  
www.ammeraalbeltech.fr

## Germany

T +49 4152 937-0  
info-de@ammeraalbeltech.com  
www.ammeraalbeltech.de

## Hungary

T +36 30 311 6099  
info-hu@ammeraalbeltech.com  
www.ammeraalbeltech.hu

## India

T +91 44 265 34 244  
info-in@ammeraalbeltech.com  
www.ammeraalbeltech.com

## Italy

T +39 051 660 60 06  
info-it@ammeraalbeltech.com  
www.ammeraalbeltech.it

## Luxembourg

T +352 26 48 38 56  
info-lu@ammeraalbeltech.com  
www.ammeraal-beltech.lu

## Malaysia

T +60 3 806 188 49  
info-my@ammeraalbeltech.com  
www.ammeraalbeltech.com

## Netherlands

T +31 72 57 51212  
info-nl@ammeraalbeltech.com  
www.ammeraalbeltech.nl

## Poland

T +48 32 44 77 179  
info-pl@ammeraalbeltech.com  
www.ammeraalbeltech.com

## Portugal

T +351 22 947 94 40  
info-pt@ammeraalbeltech.com  
www.ammeraalbeltech.pt

## Singapore

T +65 62739767  
info-sg@ammeraalbeltech.com  
www.ammeraalbeltech.com

## Slovakia

T +421 2 55648541-2  
info-sk@ammeraalbeltech.com  
www.ammeraalbeltech.sk

## South Korea

T +82 31 448 3613-7  
info-kr@ammeraalbeltech.com  
www.ammeraalbeltech.co.kr

## Spain

T +34 93 718 3054  
info-es@ammeraalbeltech.com  
www.ammeraalbeltech.es

## Sweden

T +46 44 780 3010  
info-se@ammeraalbeltech.com  
www.ammeraalbeltech.se

## Switzerland

T +41 55 2253 535  
info-ch@ammeraalbeltech.com  
www.ammeraalbeltech.ch

## Thailand

T +66 2 902 2604-13  
info-th@ammeraalbeltech.com  
www.ammeraalbeltech.com

## United Kingdom

T +44 1992 500550  
info-uk@ammeraalbeltech.com  
www.ammeraalbeltech.co.uk

## United States

T +1 847 673 6720  
info-us@ammeraalbeltech.com  
www.ammeraalbeltech.com

## Vietnam

T +84 8 376 562 05  
info-vn@ammeraalbeltech.com  
www.ammeraalbeltech.com.vn

## Global Headquarters:

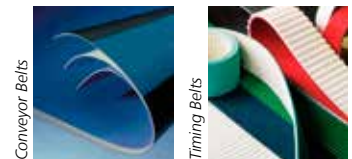
### Ammeraal Beltech Holding B.V.

P.O. Box 38  
1700 AA Heerhugowaard  
The Netherlands

T +31 (0)72 575 1212  
F +31 (0)72 571 6455

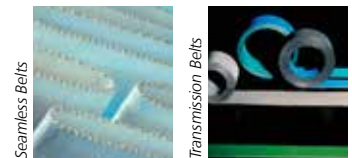
info@ammeraalbeltech.com  
www.ammeraalbeltech.com

Expert advice, quality solutions  
and local service  
for all your belting needs



Conveyor Belts

Timing Belts



Seamless Belts

Transmission Belts



Modular Belts

Fabrication & service

... and 150 more service contact points on [www.ammeraalbeltech.com](http://www.ammeraalbeltech.com)