



Ammeraal Beltech Modular

Innovative belt and chain solutions
for every industry & application



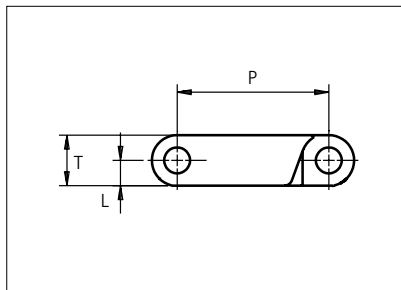
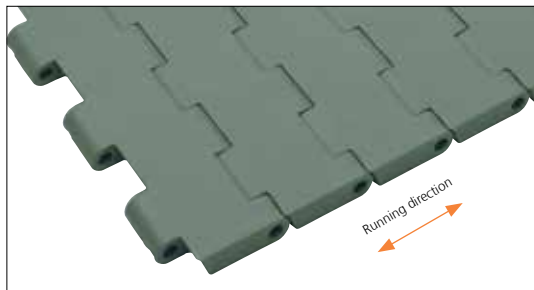
Content

uni SSB C	page 3 - 6
uni SSB 22%	page 7 - 10
uni SSB 29%	page 11 - 14
uni SSB 32%	page 15 - 18



Plastic Modular Belt

Series **uni SSB** Type **C**



Straight running belt
 Nominal pitch: 38.1 mm (1.50 in)
 Surface type: Flat
 Surface opening: Closed
 Backflex radius: 45.0 mm (1.8 in)
 Pin diameter: 6.4 mm (0.25 in)

Belt material & color	POM-LF BR	PP G	mm	in	mm	in		
Pin and lock material & color	PBT-GR N	PP B	P (Nominal)	38.1	1.50	T	12.7w	0.50
			L	6.4	0.25	-	-	-

Non standard material and color: See uni Material and Color Overview.

Alternative pin and lock materials: Pin: PP **W** PA66 **N** SS304

Belt width		Permissible tensile force (Belt/pin material)				Belt weight (Belt/pin material)				*Min. No. drive sprocket per shaft	Number of wear strips (Min. No.)	
		POM-LF/PBT-GR		PP/PBT-GR		POM-LF/PBT-GR		PP/PBT-GR			**Carry (pcs)	**Return (pcs)
mm	in	N	lbf	N	lbf	kg/m	lb/ft	kg/m	lb/ft			
83	3.3	2988	672	1079	243	0.9	0.63	0.6	0.41	2	2	2
115	4.5	4140	931	1495	336	1.3	0.87	0.9	0.57	2	2	2
153	6.0	5513	1239	1991	448	1.7	1.16	1.1	0.76	2	2	2
191	7.5	6876	1546	2483	558	2.2	1.45	1.4	0.95	2	2	2
229	9.0	8244	1853	2977	669	2.6	1.74	1.7	1.14	2	2	2
305	12.0	10980	2468	3965	891	3.4	2.32	2.3	1.52	3	3	2
381	15.0	13716	3083	4953	1113	4.3	2.89	2.8	1.89	3	3	2
457	18.0	16452	3698	5941	1336	5.2	3.47	3.4	2.27	4	4	2
533	21.0	19188	4313	6929	1558	6.0	4.05	3.9	2.65	4	4	2
609	24.0	21924	4929	7917	1780	6.9	4.62	4.5	3.03	5	5	3
685	27.0	24660	5544	8905	2002	7.7	5.20	5.1	3.41	5	5	3
761	30.0	27396	6159	9893	2224	8.6	5.78	5.6	3.78	6	6	3

Additional standard belt widths are available in steps of 76.1 mm (3.00 in). Additional non-standard belt widths are available in steps of 25.4 mm (1.00 in).

1979	77.9	71244	16016	25727	5783	22.4	15.03	14.6	9.84	14	14	7
------	------	-------	-------	-------	------	------	-------	------	------	----	----	---

Additional standard belt widths are available in steps of 76.1 mm (3.00 in). Additional non-standard belt widths are available in steps of 25.4 mm (1.00 in).

2968	116.9	106848	24019	38584	8674	33.5	22.54	22.0	14.76	20	20	10
------	-------	--------	-------	-------	------	------	-------	------	-------	----	----	----

For belt width above 2968 mm, please contact our customer service to review packaging and handling.

General belt tolerance is +0/-0.4% at 23°C/73°F and 50% RH. For exact belt width contact Customer Service. Non standard belt width on request.

*Max. Load per Drive Sprocket. Belt material: POM-LF 2000 N (450 lbf), PP 1200 N (270 lbf).

**Max. Spacing between wear strips, Carry: 152 mm (6 in); Return: 304 mm (12 in).

= Single Link



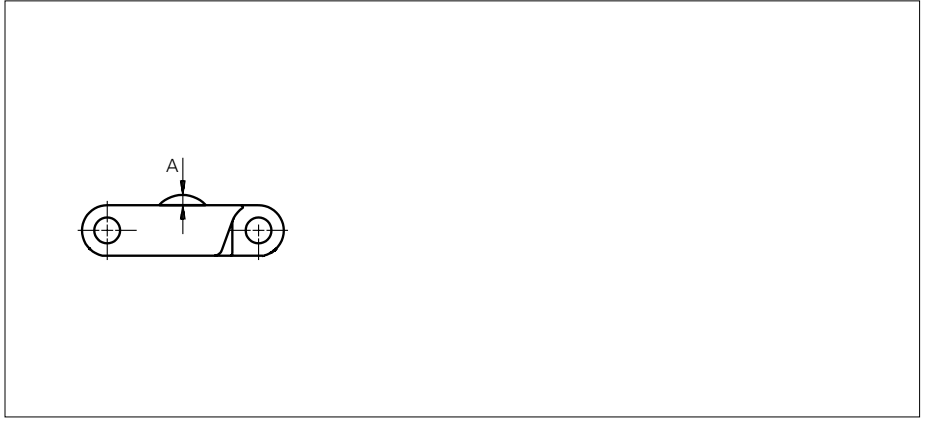
STANDARD

STRAIGHT RUNNING

PITCH 38.1 MM/1.50 IN

Accessories

Rubber Top

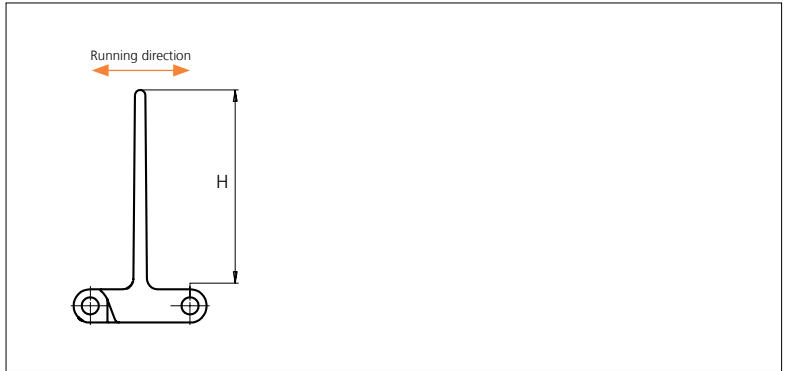
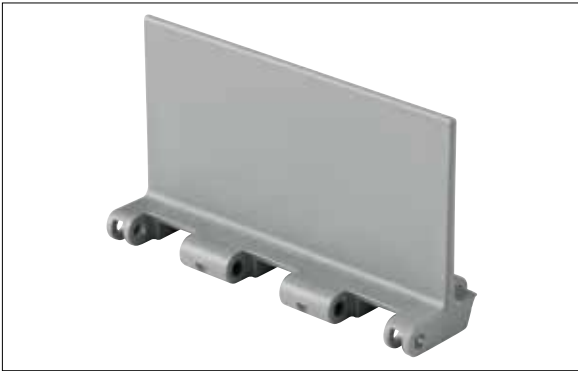


Type	Belt material & color	Rubber material & color	A		Link size	Width	
			mm	in		mm	in
Curved	POM-LF BR	05 I	2.5	0.10	K600	152.2	5.99

Non Standard material and color: See uni Material and Color Overview.

Accessories

Flight



Type	Flight Material & color	H		Link size	Width	
		mm	in		mm	in
Flat	PP-I G	76.1	3.00	K600	152.0	5.99

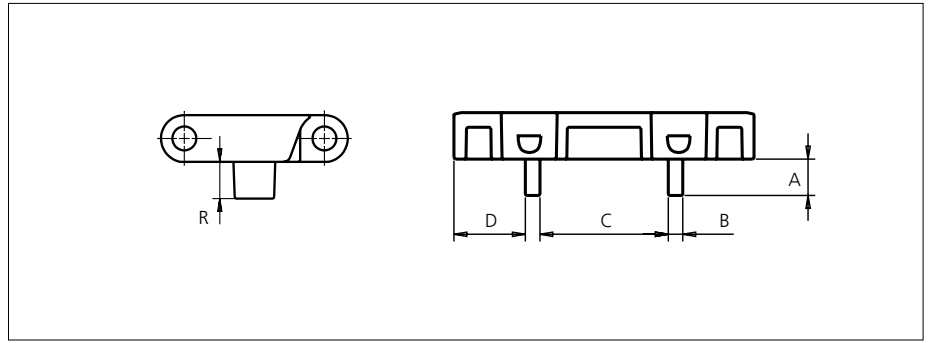
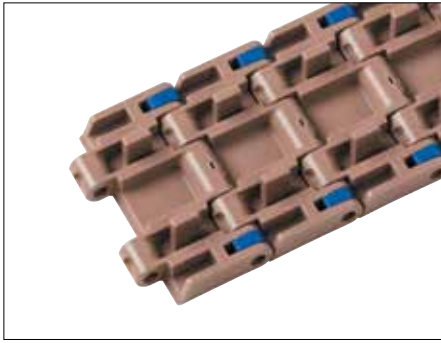
Non Standard material and color: See uni Material and Color Overview.

Minimum bricklaid indent is for uni SSB Product Support 50.8 mm (2.00 in).

Increment: 25.4 mm (1.00 in).

Accessories

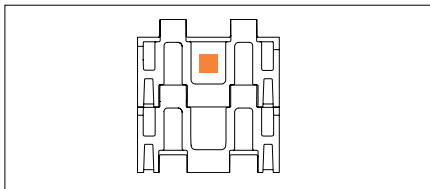
Tab / Single Link Only



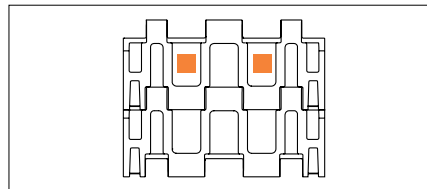
Type	Belt material & color	R		D		C		B		A		Link size	Width	
		mm	in	mm	in	mm	in	mm	in	mm	in		mm	in
Bottom Guide	POM-LF BR PP G	10.0	0.39	19.6	0.77	35.2	1.39	4.0	0.16	10.0	0.39	K325	82.6	3.25

Non Standard material and color: See uni Material and Color Overview.

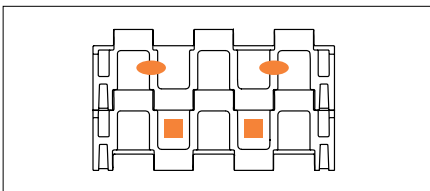
Overview Sprocket Placement



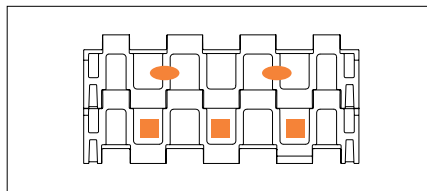
uni SSB K325



uni SSB K450



uni SSB K600



uni SSB K750

- = Single Row sprocket
- = Double Row sprocket

Sprocket

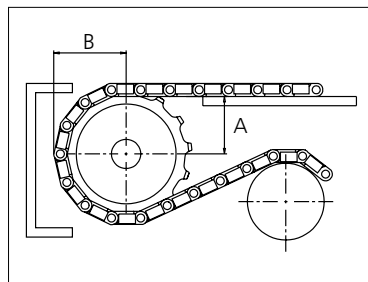
No. of teeth	Bore size													Overall diameter		Pitch diameter		Hub diameter		Dimension A		Dimension B		Single row/Two way	Double row/Two way	Molded PA6 LG	Machined PA6 N
	Pilot Bore		0.75	0.78	0.98	1.00	1.18	1.25	1.50	1.57	2.36	2.50	3.54														
	mm	in	19.1	20.0	25.0	25.4	30.0	31.8	38.1	40.0	60.0	63.5	90.0	mm	in	mm	in	mm	in	mm	in	x	x	x	x		
Z19	x				●	●	●	■	●				117	4.61	117.3	4.62	75	2.95	49.1	1.93	65	2.56	x	x	x		
Z21	x				●	●	●	■	●				130	5.12	129.3	5.09	75	2.95	55.4	2.18	71	2.80	x	x	x		
Z23	x				●	●	●	■	●				142	5.59	141.2	5.56	75	2.95	61.6	2.43	77	3.03	x	x	x		
Z25	x					●	●	■	●				155	6.10	153.2	6.03	75	2.95	67.8	2.67	83	3.27	x	x	x		
Z27	x						●	■	●				167	6.57	165.2	6.5	75	2.95	74	2.91	89	3.50		x		x	
Z29	x						●	■	●				179	7.05	177.2	6.98	75	2.95	80.2	3.16	95	3.74		x		x	
Z31	x						●	■	●				192	7.56	198.3	7.81	75	2.95	86.4	3.40	101	3.98		x		x	

■ Molded sprocket

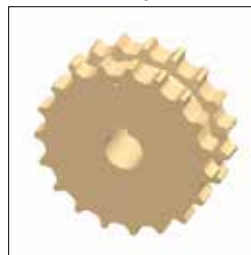
● Molded sprocket

● Molded sprocket

■ Machined sprocket



● Machined sprocket



Non standard material and color: See uni Material and Color Overview.

Other sprocket sizes are available upon request.

Two-part sprocket are available upon request.

Round bores are always delivered with keyway.

Other bore sizes are available upon request.

uni Retainer Rings: See uni Retainer Ring data sheet.

Width of tooth: 15.0 mm/0.59 in

Width of sprocket: Single row = 42.3 mm (1.67 in)

Double row = 42.3 mm (1.67 in)

Max. load per sprocket shown does not take bore size into account.

Please also ensure that sufficient size shaft is chosen for corresponding load.

For correct sprocket position: See uni Assembly Instructions for uni SSB.

For more detailed sprocket information, contact Customer Service.

uni SSB C/1409



Expert advice, quality solutions and local service for all your belting needs www.ammeraalbeltech.com

Ammeraal Beltech Modular A/S
Hjulgagervej 21
DK-7100 Vejle

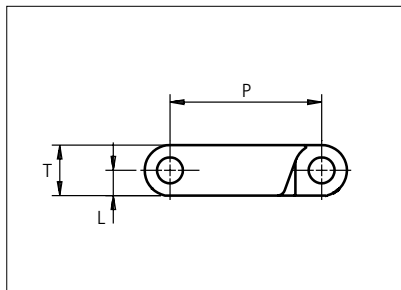
T +45 7572 3100
F +45 7572 3348
admin@unichains.com
www.unichains.com

This information is subject to alteration due to continuous development. Ammeraal Beltech will not be held liable for the incorrect use of the above stated information. This information replaces previous information. All activities performed and services rendered by Ammeraal Beltech are subject to general terms and conditions of sale and delivery, as applied by its operating companies.



Plastic Modular Belt

Series **uni SSB** Type **22%**



Straight running belt
 Nominal pitch: 38.1 mm (1.50 in)
 Surface type: Flat
 Surface opening: 22%
 Backflex radius: 45.0 mm (1.8 in)
 Pin diameter: 6.4 mm (0.25 in)

Belt material & color	POM-LF BR	PP G	mm	in	mm	in		
Pin and lock material & color	PBT-GR N	PP B	P (Nominal)	38.1	1.50	T	12.7	0.50
			L	6.4	0.25	-	-	-

Non standard material and color: See uni Material and Color Overview.

Alternative pin and lock materials: Pin: PP **W** PA66 **N** SS304

Belt width		Permissible tensile force (Belt/pin material)				Belt weight (Belt/pin material)				*Min. No. drive sprocket per shaft	Number of wear strips (Min. No.)	
		POM-LF/PBT-GR		PP/PBT-GR		POM-LF/PBT-GR		PP/PBT-GR			**Carry (pcs)	**Return (pcs)
mm	in	N	lbf	N	lbf	kg/m	lb/ft	kg/m	lb/ft			
153	6.0	5508	1238	1989	447	1.7	1.16	1.1	0.76	2	2	2
229	9.0	8244	1853	2977	669	2.6	1.74	1.7	1.14	2	2	2
305	12.0	10980	2468	3965	891	3.4	2.32	2.3	1.52	3	3	2
381	15.0	13716	3083	4953	1113	4.3	2.89	2.8	1.89	3	3	2
457	18.0	16452	3698	5941	1336	5.2	3.47	3.4	2.27	4	4	2
533	21.0	19188	4313	6929	1558	6.0	4.05	3.9	2.65	4	4	2
609	24.0	21924	4929	7917	1780	6.9	4.62	4.5	3.03	5	5	3
685	27.0	24660	5544	8905	2002	7.7	5.20	5.1	3.41	5	5	3
761	30.0	27396	6159	9893	2224	8.6	5.78	5.6	3.78	6	6	3
838	33.0	30168	6782	10894	2449	9.5	6.36	6.2	4.17	6	6	3
914	36.0	32904	7397	11882	2671	10.3	6.94	6.8	4.55	7	7	4
990	39.0	35640	8012	12870	2893	11.2	7.52	7.3	4.92	7	7	4

Additional standard belt widths are available in steps of 76.1 mm (3.00 in). Additional non-standard belt widths are available in steps of 25.4 mm (1.00 in).

1979	77.9	71244	16016	25727	5783	22.4	15.03	14.6	9.84	14	14	7
------	------	-------	-------	-------	------	------	-------	------	------	----	----	---

Additional standard belt widths are available in steps of 76.1 mm (3.00 in). Additional non-standard belt widths are available in steps of 25.4 mm (1.00 in).

2968	116.9	106848	24019	38584	8674	33.5	22.54	22.0	14.76	20	20	10
------	-------	--------	-------	-------	------	------	-------	------	-------	----	----	----

General belt tolerance is +0/-0.4% at 23°C/73°F and 50% RH. For exact belt width contact Customer Service. Non standard belt width on request.

*Max. Load per Drive Sprocket. Belt material: POM-LF 2000 N (450 lbf), PP 1200 N (270 lbf).

**Max. Spacing between wear strips, Carry: 152 mm (6 in); Return: 304 mm (12 in).

= Single Link



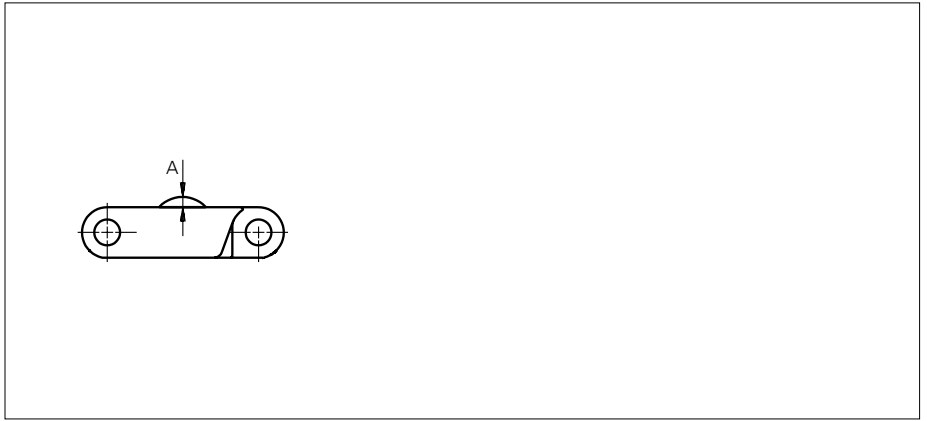
STANDARD

STRAIGHT RUNNING

PITCH 38.1 MM/1.50 IN

Accessories

Rubber Top

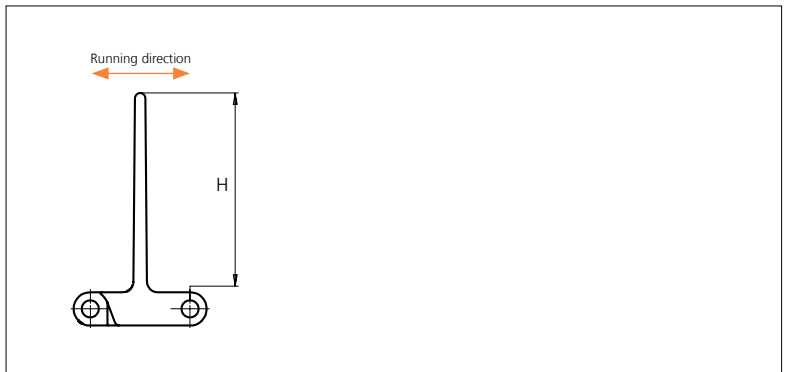
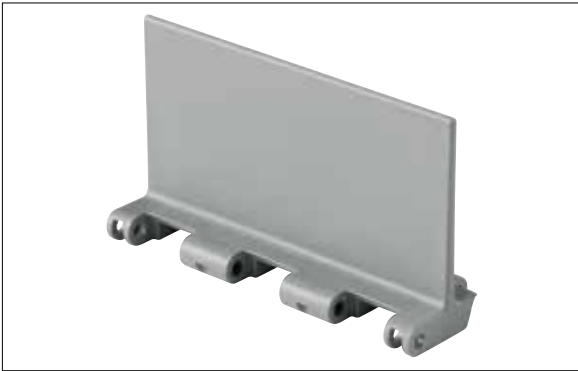


Type	Belt material & color	Rubber material & color	A		Link size	Width	
			mm	in		mm	in
Curved	POM-LF BR	05 I	2.5	0.10	K300	76.0	2.99
					K600	152.2	5.99

Non Standard material and color: See uni Material and Color Overview.

Accessories

Flight



Type	Flight Material & color	H		Link size	Width	
		mm	in		mm	in
Flat	PP-I G	76.1	3.00	K600	152.0	5.99

Non Standard material and color: See uni Material and Color Overview.

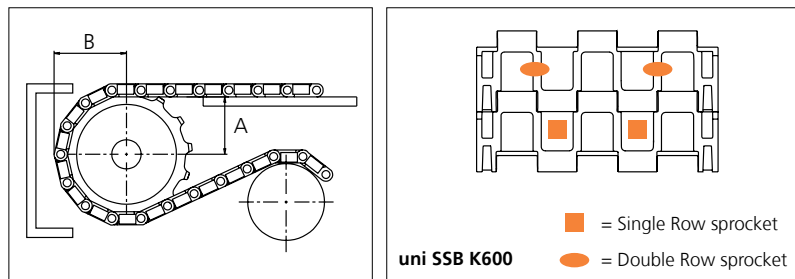
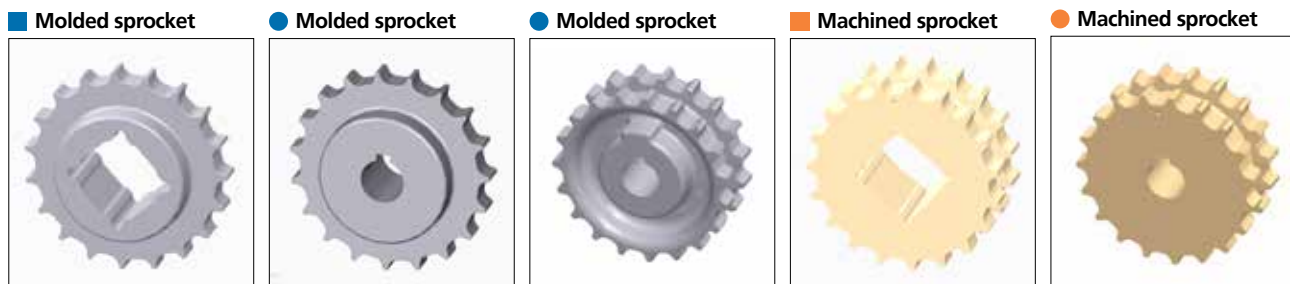
Minimum bricklaid indent is for uni SSB Product Support 50.8 mm (2.00 in)

Increment: 25.4 mm (1.00 in)

Sprocket

No. of teeth	Bore size												Overall diameter		Pitch diameter		Hub diameter		Dimension A		Dimension B		Single row/Two way	Double row/Two way	Molded PA6 LG	Machined PA6 N
	Pilot Bore	in	0.75	0.78	0.98	1.00	1.18	1.25	1.50	1.57	2.36	2.50														
	mm	19.1	20.0	25.0	25.4	30.0	31.8	38.1	40.0	60.0	63.5	90.0	mm	in	mm	in	mm	in	mm	in						
Z19	x				●	●	●	■	●				117	4.61	117.3	4.62	75	2.95	49.1	1.93	65	2.56	x	x	x	
Z21	x				●	●	●	■	●				130	5.12	129.3	5.09	75	2.95	55.4	2.18	71	2.80	x	x	x	
Z23	x				●	●	●	■	●				142	5.59	141.2	5.56	75	2.95	61.6	2.43	77	3.03	x	x	x	
Z25	x				●	●	●	■	●				155	6.10	153.2	6.03	75	2.95	67.8	2.67	83	3.27	x	x	x	
Z27	x							●	●	●			167	6.57	165.2	6.5	75	2.95	74	2.91	89	3.50		x		x
Z29	x							●	●	●			179	7.05	177.2	6.98	75	2.95	80.2	3.16	95	3.74		x		x
Z31	x							●	●	●			192	7.56	198.3	7.81	75	2.95	86.4	3.40	101	3.98		x		x

Non standard material and color. See uni Material and Color Overview.



Belt material	POM		PP	
	N	lbf	N	lbf
uni SSB	2000	450	1200	270

Other sprocket sizes are available upon request.
 Two-part sprocket are available upon request.
 Round bores are always delivered with keyway.
 Other bore sizes are available upon request.
 uni Retainer Rings: See uni Retainer Ring data sheet
 Width of tooth: 15.0 mm/0.59 in
 Width of sprocket: Single row = 42.3 mm (1.67 in)
 Double row = 42.3 mm (1.67 in)

Max load per sprocket shown does not take bore size into account.
 Please also ensure that sufficient size shaft is chosen for corresponding load.

For correct sprocket position: See uni Assembly Instructions for uni SSB.
 For more detailed sprocket information, contact Customer Service.



Conveyor Belts



Seamless Belts



Modular Belts



Timing Belts



Transmission Belts



Fabrication & service

Expert advice, quality solutions and local service for all your belting needs www.ammeraalbeltech.com

Ammeraal Beltech Modular A/S
Hjulgagervej 21
DK-7100 Vejle

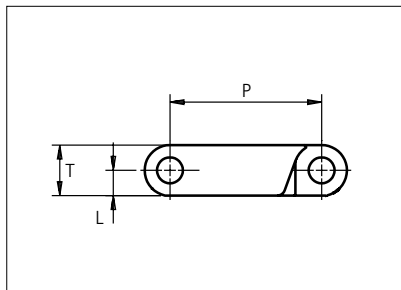
T +45 7572 3100
F +45 7572 3348
admin@unichains.com
www.unichains.com

This information is subject to alteration due to continuous development. Ammeraal Beltech will not be held liable for the incorrect use of the above stated information. This information replaces previous information. All activities performed and services rendered by Ammeraal Beltech are subject to general terms and conditions of sale and delivery, as applied by its operating companies.



Plastic Modular Belt

Series **uni SSB** Type **29%**



Straight running belt
 Nominal pitch: 38.1 mm (1.50 in)
 Surface type: Flat
 Surface opening: 29%
 Backflex radius: 45.0 mm (1.8 in)
 Pin diameter: 6.4 mm (0.25 in)

Belt material & color	POM-LF BR	PP G	mm	in	mm	in		
Pin and lock material & color	PBT-GR N	PP B	P (Nominal)	38.1	1.50	T	12.7	0.50
			L	6.4	0.25	-	-	-

Non standard material and color: See uni Material and Color Overview.

Alternative pin and lock materials: Pin: PP **W** PA66 **N** SS304

Belt width		Permissible tensile force (Belt/pin material)				Belt weight (Belt/pin material)				*Min. No. drive sprocket per shaft	Number of wear strips (Min. No.)	
		POM-LF/PBT-GR		PP/PBT-GR		POM-LF/PBT-GR		PP/PBT-GR			**Carry (pcs)	**Return (pcs)
mm	in	N	lbf	N	lbf	kg/m	lb/ft	kg/m	lb/ft			
153	6.0	5508	1238	1989	447	1.7	1.16	1.1	0.76	2	2	2
229	9.0	8244	1853	2977	669	2.6	1.74	1.7	1.14	2	2	2
305	12.0	10980	2468	3965	891	3.4	2.32	2.3	1.52	3	3	2
381	15.0	13716	3083	4953	1113	4.3	2.89	2.8	1.89	3	3	2
457	18.0	16452	3698	5941	1336	5.2	3.47	3.4	2.27	4	4	2
533	21.0	19188	4313	6929	1558	6.0	4.05	3.9	2.65	4	4	2
609	24.0	21924	4929	7917	1780	6.9	4.62	4.5	3.03	5	5	3
685	27.0	24660	5544	8905	2002	7.7	5.20	5.1	3.41	5	5	3
761	30.0	27396	6159	9893	2224	8.6	5.78	5.6	3.78	6	6	3
838	33.0	30168	6782	10894	2449	9.5	6.36	6.2	4.17	6	6	3
914	36.0	32904	7397	11882	2671	10.3	6.94	6.8	4.55	7	7	4
990	39.0	35640	8012	12870	2893	11.2	7.52	7.3	4.92	7	7	4

Additional standard belt widths are available in steps of 76.1 mm (3.00 in). Additional non-standard belt widths are available in steps of 25.4 mm (1.00 in).

1979	77.9	71244	16016	25727	5783	22.4	15.03	14.6	9.84	14	14	7
------	------	-------	-------	-------	------	------	-------	------	------	----	----	---

Additional standard belt widths are available in steps of 76.1 mm (3.00 in). Additional non-standard belt widths are available in steps of 25.4 mm (1.00 in).

2968	116.9	106848	24019	38584	8674	33.5	22.54	22.0	14.76	20	20	10
------	-------	--------	-------	-------	------	------	-------	------	-------	----	----	----

General belt tolerance is +0/-0.4% at 23°C/73°F and 50% RH. For exact belt width contact Customer Service. Non standard belt width on request.

*Max. Load per Drive Sprocket. Belt material: POM-LF 2000 N (450 lbf), PP 1200 N (270 lbf).

**Max. Spacing between wear strips, Carry: 152 mm (6 in); Return: 304 mm (12 in).

= Single Link



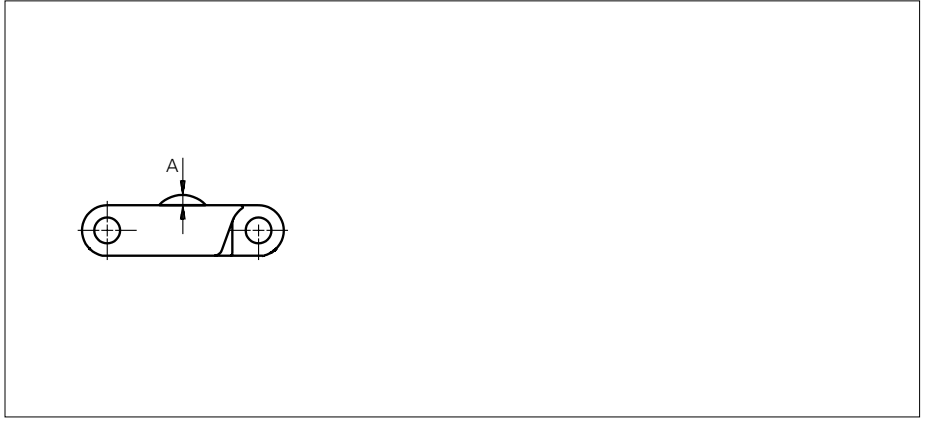
STANDARD

STRAIGHT RUNNING

PITCH 38.1 MM/1.50 IN

Accessories

Rubber Top

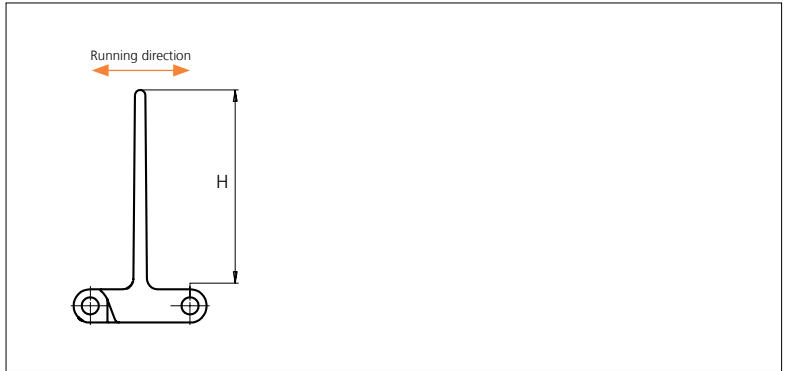
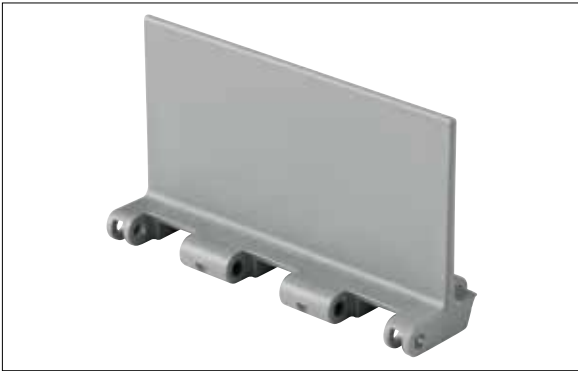


Type	Belt material & color	Rubber material & color	A		Link size	Width	
			mm	in		mm	in
Curved	POM-LF BR	05 I	2.5	0.10	K300	76.0	2.99
					K600	152.2	5.99

Non Standard material and color: See uni Material and Color Overview.

Accessories

Flight



Type	Flight Material & color	H		Link size	Width	
		mm	in		mm	in
Flat	PP-I G	76.1	3.00	K600	152.0	5.99

Non Standard material and color: See uni Material and Color Overview.

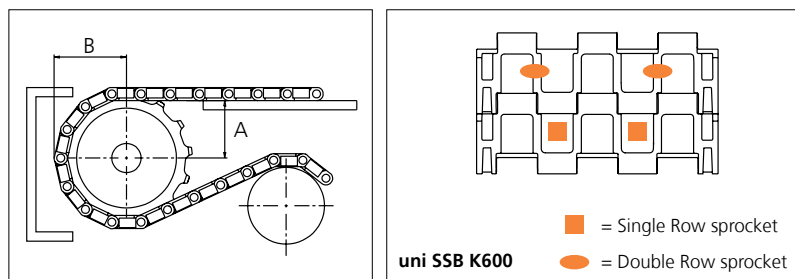
Minimum bricklaid indent is for uni SSB Product Support 50.8 mm (2.00 in)

Increment: 25.4 mm (1.00 in)

Sprocket

No. of teeth	Bore size												Overall diameter		Pitch diameter		Hub diameter		Dimension A		Dimension B		Single row/Two way	Double row/Two way	Molded PA6 LG	Machined PA6 N
	Pilot Bore	in	0.75	0.78	0.98	1.00	1.18	1.25	1.50	1.57	2.36	2.50														
	mm	19.1	20.0	25.0	25.4	30.0	31.8	38.1	40.0	60.0	63.5	90.0	mm	in	mm	in	mm	in	mm	in						
Z19	x				●	●	●	■	●				117	4.61	117.3	4.62	75	2.95	49.1	1.93	65	2.56	x	x	x	
Z21	x				●	●	●	■	●				130	5.12	129.3	5.09	75	2.95	55.4	2.18	71	2.80	x	x	x	
Z23	x				●	●	●	■	●				142	5.59	141.2	5.56	75	2.95	61.6	2.43	77	3.03	x	x	x	
Z25	x				●	●	●	■	●				155	6.10	153.2	6.03	75	2.95	67.8	2.67	83	3.27	x	x	x	
Z27	x							●	●	●			167	6.57	165.2	6.5	75	2.95	74	2.91	89	3.50		x		x
Z29	x							●	●	●			179	7.05	177.2	6.98	75	2.95	80.2	3.16	95	3.74		x		x
Z31	x							●	●	●			192	7.56	198.3	7.81	75	2.95	86.4	3.40	101	3.98		x		x

Non standard material and color. See uni Material and Color Overview.



Belt material	POM		PP	
	N	lbf	N	lbf
uni SSB	2000	450	1200	270

Other sprocket sizes are available upon request.
 Two-part sprocket are available upon request.
 Round bores are always delivered with keyway.
 Other bore sizes are available upon request.
 uni Retainer Rings: See uni Retainer Ring data sheet
 Width of tooth: 15.0 mm/0.59 in
 Width of sprocket: Single row = 42.3 mm (1.67 in)
 Double row = 42.3 mm (1.67 in)

Max. load per sprocket shown does not take bore size into account.
 Please also ensure that sufficient size shaft is chosen for corresponding load.

For correct sprocket position: See uni Assembly Instructions for uni SSB.
 For more detailed sprocket information, contact Customer Service.



Conveyor Belts



Seamless Belts



Modular Belts



Timing Belts



Transmission Belts



Fabrication & service

Expert advice, quality solutions and local service for all your belting needs
www.ammeraalbeltech.com

Ammeraal Beltech Modular A/S
Hjulgagervej 21
DK-7100 Vejle

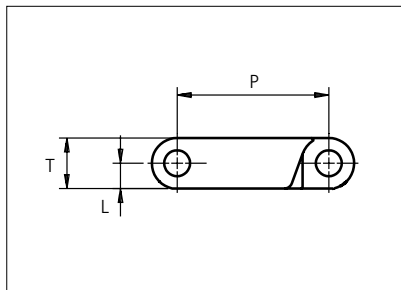
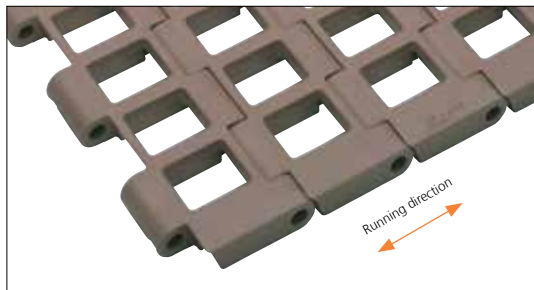
T +45 7572 3100
F +45 7572 3348
admin@unichains.com
www.unichains.com

This information is subject to alteration due to continuous development. Ammeraal Beltech will not be held liable for the incorrect use of the above stated information. This information replaces previous information. All activities performed and services rendered by Ammeraal Beltech are subject to general terms and conditions of sale and delivery, as applied by its operating companies.



Plastic Modular Belt

Series **uni SSB** Type **32%**



Straight running belt
 Nominal pitch: 38.1 mm (1.50 in)
 Surface type: Flat
 Surface opening: 32%
 Backflex radius: 45.0 mm (1.8 in)
 Pin diameter: 6.4 mm (0.25 in)

Belt material & color	POM-LF BR	PP G	mm	in	mm	in		
Pin and lock material & color	PBT-GR N	PP B	P (Nominal)	38.1	1.50	T	12.7	0.50
			L	6.4	0.25	-	-	-

Non standard material and color: See uni Material and Color Overview.

Alternative pin and lock materials: Pin: PP **W** PA66 **N** SS304

Belt width		Permissible tensile force (Belt/pin material)				Belt weight (Belt/pin material)				*Min. No. drive sprocket per shaft	Number of wear strips (Min. No.)	
		POM-LF/PBT-GR		PP/PBT-GR		POM-LF/PBT-GR		PP/PBT-GR			**Carry (pcs)	**Return (pcs)
mm	in	N	lbf	N	lbf	kg/m	lb/ft	kg/m	lb/ft			
153	6.0	5508	1238	1989	447	1.7	1.16	1.1	0.76	2	2	2
229	9.0	8244	1853	2977	669	2.6	1.74	1.7	1.14	2	2	2
305	12.0	10980	2468	3965	891	3.4	2.32	2.3	1.52	3	3	2
381	15.0	13716	3083	4953	1113	4.3	2.89	2.8	1.89	3	3	2
457	18.0	16452	3698	5941	1336	5.2	3.47	3.4	2.27	4	4	2
533	21.0	19188	4313	6929	1558	6.0	4.05	3.9	2.65	4	4	2
609	24.0	21924	4929	7917	1780	6.9	4.62	4.5	3.03	5	5	3
685	27.0	24660	5544	8905	2002	7.7	5.20	5.1	3.41	5	5	3
761	30.0	27396	6159	9893	2224	8.6	5.78	5.6	3.78	6	6	3
838	33.0	30168	6782	10894	2449	9.5	6.36	6.2	4.17	6	6	3
914	36.0	32904	7397	11882	2671	10.3	6.94	6.8	4.55	7	7	4
990	39.0	35640	8012	12870	2893	11.2	7.52	7.3	4.92	7	7	4

Additional standard belt widths are available in steps of 76.1 mm (3.00 in). Additional non-standard belt widths are available in steps of 25.4 mm (1.00 in).

1979	77.9	71244	16016	25727	5783	22.4	15.03	14.6	9.84	14	14	7
------	------	-------	-------	-------	------	------	-------	------	------	----	----	---

Additional standard belt widths are available in steps of 76.1 mm (3.00 in). Additional non-standard belt widths are available in steps of 25.4 mm (1.00 in).

2968	116.9	106848	24019	38584	8674	33.5	22.54	22.0	14.76	20	20	10
------	-------	--------	-------	-------	------	------	-------	------	-------	----	----	----

General belt tolerance is +0/-0.4% at 23°C/73°F and 50% RH. For exact belt width contact Customer Service. Non standard belt width on request.

*Max. Load per Drive Sprocket. Belt material: POM-LF 2000 N (450 lbf), PP 1200 N (270 lbf).

**Max. Spacing between wear strips, Carry: 152 mm (6 in); Return: 304 mm (12 in).

= Single Link



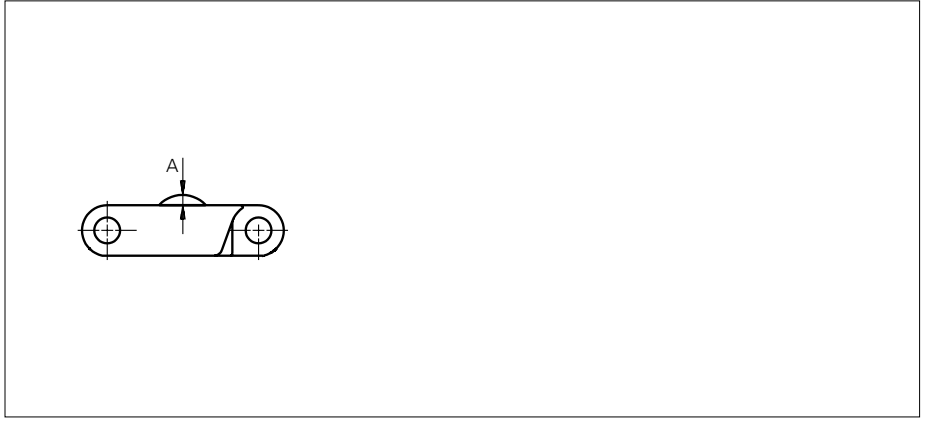
STANDARD

STRAIGHT RUNNING

PITCH 38.1 MM/1.50 IN

Accessories

Rubber Top

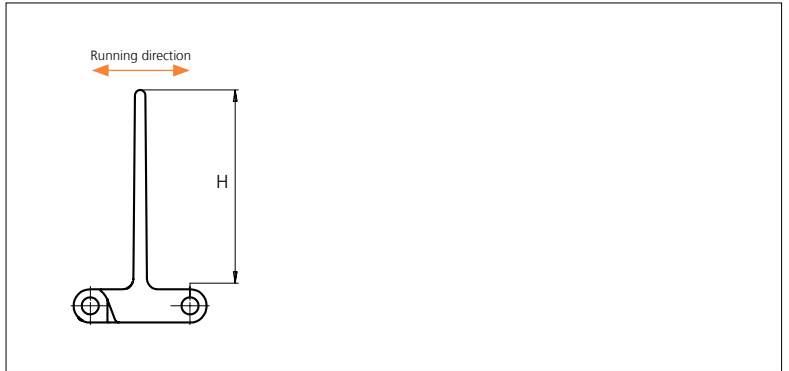
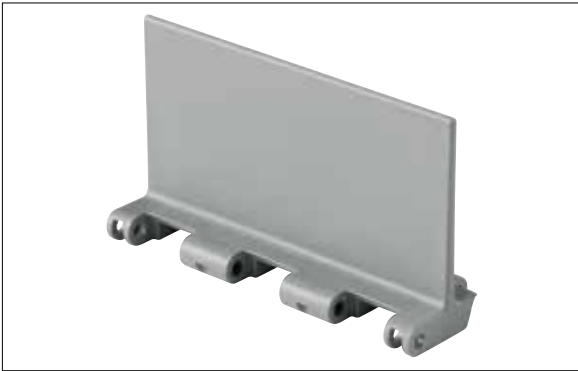


Type	Belt material & color	Rubber material & color	A		Link size	Width	
			mm	in		mm	in
Curved	POM-LF BR	05 I	2.5	0.10	K300	76.0	2.99
					K600	152.2	5.99

Non Standard material and color: See uni Material and Color Overview.

Accessories

Flight



Type	Flight Material & color	H		Link size	Width	
		mm	in		mm	in
Flat	PP-I G	76.1	3.00	K600	152.0	5.99

Non Standard material and color: See uni Material and Color Overview.

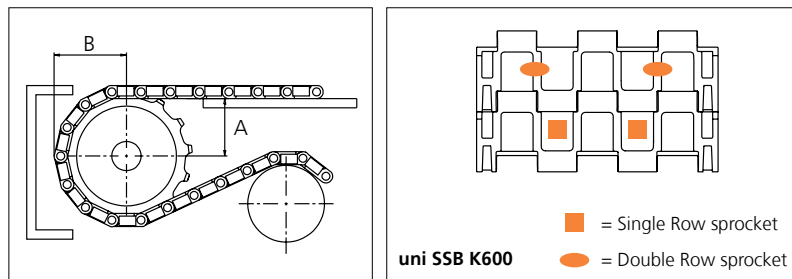
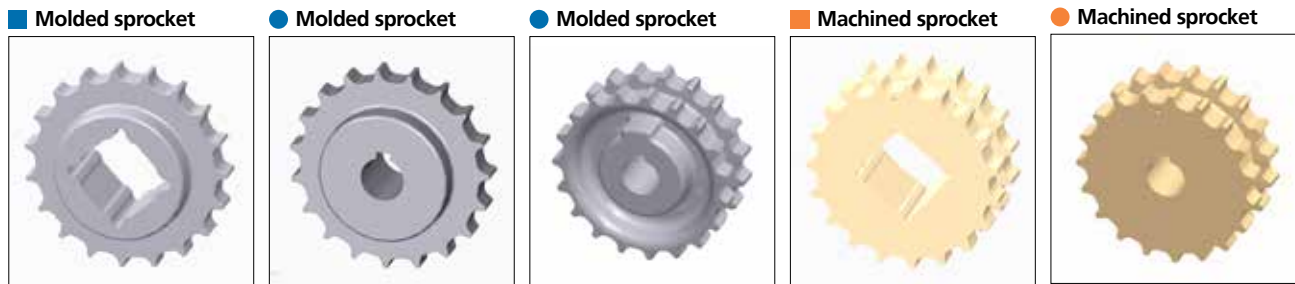
Minimum bricklaid indent is for uni SSB Product Support 50.8 mm (2.00 in)

Increment: 25.4 mm (1.00 in)

Sprocket

No. of teeth	Bore size													Overall diameter		Pitch diameter		Hub diameter		Dimension A		Dimension B		Single row/Two way	Double row/Two way	Molded PA6 LG	Machined PA6 N
	Pilot Bore	in	0.75	0.78	0.98	1.00	1.18	1.25	1.50	1.57	2.36	2.50	3.54														
	mm	19.1	20.0	25.0	25.4	30.0	31.8	38.1	40.0	60.0	63.5	90.0	mm	in	mm	in	mm	in	mm	in							
Z19	x				●	●	●	■	●				117	4.61	117.3	4.62	75	2.95	49.1	1.93	65	2.56	x	x	x		
Z21	x				●	●	●	■	●				130	5.12	129.3	5.09	75	2.95	55.4	2.18	71	2.80	x	x	x		
Z23	x				●	●	●	■	●				142	5.59	141.2	5.56	75	2.95	61.6	2.43	77	3.03	x	x	x		
Z25	x				●	●	●	■	●				155	6.10	153.2	6.03	75	2.95	67.8	2.67	83	3.27	x	x	x		
Z27	x							●	●	●			167	6.57	165.2	6.5	75	2.95	74	2.91	89	3.50		x		x	
Z29	x							●	●	●			179	7.05	177.2	6.98	75	2.95	80.2	3.16	95	3.74		x		x	
Z31	x							●	●	●			192	7.56	198.3	7.81	75	2.95	86.4	3.40	101	3.98		x		x	

Non standard material and color. See uni Material and Color Overview.



Belt material	POM		PP	
	N	lbf	N	lbf
uni SSB	2000	450	1200	270

Other sprocket sizes are available upon request.
 Two-part sprocket are available upon request.
 Round bores are always delivered with keyway.
 Other bore sizes are available upon request.
 uni Retainer Rings: See uni Retainer Ring data sheet.
 Width of tooth: 15.0 mm/0.59 in
 Width of sprocket: Single row = 42.3 mm (1.67 in)
 Double row = 42.3 mm (1.67 in)

Max. load per sprocket shown does not take bore size into account.
 Please also ensure that sufficient size shaft is chosen for corresponding load.

For correct sprocket position: See uni Assembly Instructions for uni SSB.
 For more detailed sprocket information, contact Customer Service.



Conveyor Belts



Seamless Belts



Modular Belts



Timing Belts



Transmission Belts



Fabrication & service

Expert advice, quality solutions and local service for all your belting needs www.ammeraalbeltech.com

Ammeraal Beltech Modular A/S
Hjulgagervej 21
DK-7100 Vejle

T +45 7572 3100
F +45 7572 3348
admin@unichains.com
www.unichains.com

This information is subject to alteration due to continuous development. Ammeraal Beltech will not be held liable for the incorrect use of the above stated information. This information replaces previous information. All activities performed and services rendered by Ammeraal Beltech are subject to general terms and conditions of sale and delivery, as applied by its operating companies.

Local Contacts

Austria

T +43 171728 133
info-de@ammeraalbeltech.com
www.ammeraalbeltech.at

Belgium

T +32 2 466 03 00
info-be@ammeraalbeltech.com
www.ammeraalbeltech.be

Canada

T +1 905 890 1311
info-ca@ammeraalbeltech.com
www.ammeraalbeltech.com

Chile

T +56 2 233 12900
info-cl@ammeraalbeltech.com
www.ammeraalbeltech.cl

China

T +86 512 8287 2709
info-cn@ammeraalbeltech.com
www.ammeraalbeltech.com.cn

Czech Republic

T +420 567 117 211
info-cz@ammeraalbeltech.com
www.ammeraalbeltech.cz

Denmark

T + 45 7572 3100
info-dk@ammeraalbeltech.com
www.unichains.com

Finland

T +358 207 911 400
info-fi@ammeraalbeltech.com
www.ammeraalbeltech.fi

France

T +33 3 20 90 36 00
info-fr@ammeraalbeltech.com
www.ammeraalbeltech.fr

Germany

T +49 4152 937-0
info-de@ammeraalbeltech.com
www.ammeraalbeltech.de

Hungary

T +36 30 311 6099
info-hu@ammeraalbeltech.com
www.ammeraalbeltech.hu

India

T +91 44 265 34 244
info-in@ammeraalbeltech.com
www.ammeraalbeltech.com

Italy

T +39 051 660 60 06
info-it@ammeraalbeltech.com
www.ammeraalbeltech.it

Luxembourg

T +352 26 48 38 56
info-lu@ammeraalbeltech.com
www.ammeraal-beltech.lu

Malaysia

T +60 3 806 188 49
info-my@ammeraalbeltech.com
www.ammeraalbeltech.com

Netherlands

T +31 72 57 51212
info-nl@ammeraalbeltech.com
www.ammeraalbeltech.nl

Poland

T +48 32 44 77 179
info-pl@ammeraalbeltech.com
www.ammeraalbeltech.com

Portugal

T +351 22 947 94 40
info-pt@ammeraalbeltech.com
www.ammeraalbeltech.pt

Singapore

T +65 62739767
info-sg@ammeraalbeltech.com
www.ammeraalbeltech.com

Slovakia

T +421 2 55648541-2
info-sk@ammeraalbeltech.com
www.ammeraalbeltech.sk

South Korea

T +82 31 448 3613-7
info-kr@ammeraalbeltech.com
www.ammeraalbeltech.co.kr

Spain

T +34 93 718 3054
info-es@ammeraalbeltech.com
www.ammeraalbeltech.es

Sweden

T +46 44 780 3010
info-se@ammeraalbeltech.com
www.ammeraalbeltech.se

Switzerland

T +41 55 2253 535
info-ch@ammeraalbeltech.com
www.ammeraalbeltech.ch

Thailand

T +66 2 902 2604-13
info-th@ammeraalbeltech.com
www.ammeraalbeltech.com

United Kingdom

T +44 1992 500550
info-uk@ammeraalbeltech.com
www.ammeraalbeltech.co.uk

United States

T +1 847 673 6720
info-us@ammeraalbeltech.com
www.ammeraalbeltech.com

Vietnam

T +84 8 376 562 05
info-vn@ammeraalbeltech.com
www.ammeraalbeltech.com.vn

Global Headquarters:

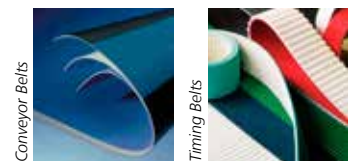
Ammeraal Beltech Holding B.V.

P.O. Box 38
1700 AA Heerhugowaard
The Netherlands

T +31 (0)72 575 1212
F +31 (0)72 571 6455

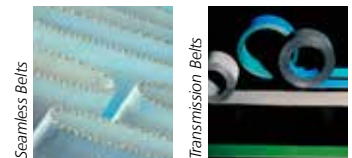
info@ammeraalbeltech.com
www.ammeraalbeltech.com

Expert advice, quality solutions
and local service
for all your belting needs



Conveyor Belts

Timing Belts



Seamless Belts

Transmission Belts



Modular Belts

Fabrication & service

... and 150 more service contact points on www.ammeraalbeltech.com