



Ammeraal Beltech Modular

Innovative belt and chain solutions
for every industry & application



Content

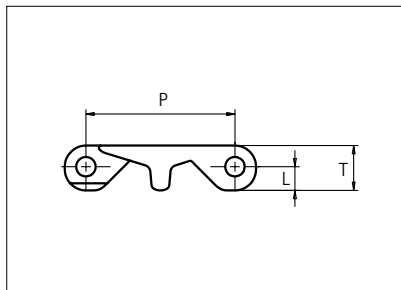
uni X-MPB C

page 3 - 4



Plastic Modular Belt

Series **uni X-MPB** Type **C**



Straight running belt
 Nominal pitch: 63.5 mm (2.50 in)
 Surface type: Flat
 Surface opening: Closed
 Backflex radius: 75 mm (2.95 in)
 Pin diameter: ø8 mm (0.31 in)

Belt material & color	POM-DI W	PE-I N	mm	in	mm	in
	Pin and lock material & color		P (Nominal)	63.5	2.50	T
		PA6.6 N	L	10.1	0.40	- / - / -

Non standard material and color: See uni Material and Color Overview.

Alternative pin and lock materials: Lockpin: PP **W** PBT **LG**

Belt width		Permissible tensile force (Belt/pin material)				Belt weight (Belt/pin material)				*Min. No. drive sprocket per shaft	Number of wear strips (Min. No.)	
		POM-DI/PA6.6		PE-I/PA6.6		POM-DI/PA6.6		PE-I/PA6.6			**Carry (pcs)	**Return (pcs)
mm	in	N	lbf	N	lbf	kg/m	lb/ft	kg/m	lb/ft			
76	3.0	2280	513	760	171	1.1	0.75	0.8	0.51	2	2	2
151	6.0	4545	1022	1515	341	2.2	1.49	1.5	1.02	2	2	2
227	8.9	6809	1531	2270	510	3.3	2.23	2.3	1.53	2	2	2
302	11.9	9074	2040	3025	680	4.4	2.97	3.0	2.03	3	3	2
378	14.9	11339	2549	3780	850	5.5	3.71	3.8	2.54	3	3	2
453	17.9	13603	3058	4534	1019	6.6	4.45	4.5	3.05	4	4	2
529	20.8	15868	3567	5289	1189	7.7	5.19	5.3	3.55	4	4	2
604	23.8	18133	4076	6044	1359	8.8	5.93	6.0	4.06	5	5	3
680	26.8	20397	4585	6799	1528	9.9	6.67	6.8	4.57	5	5	3
755	29.7	22662	5094	7554	1698	11.0	7.41	7.6	5.08	6	6	3
831	32.7	24927	5604	8309	1868	12.1	8.15	8.3	5.58	6	6	3
906	35.7	27191	6113	9064	2038	13.2	8.89	9.1	6.09	7	7	4
982	38.7	29456	6622	9819	2207	14.3	9.63	9.8	6.60	7	7	4

Additional standard belt widths are available in steps of 75.5 mm (2.97 in.) Additional non-standard belt widths are available in steps of 25.2 mm (0.99 in.)

1963	77.3	58890	13238	19630	4413	28.7	19.26	19.6	13.19	14	14	7
------	------	-------	-------	-------	------	------	-------	------	-------	----	----	---

Additional standard belt widths are available in steps of 75.5 mm (2.97 in.) Additional non-standard belt widths are available in steps of 25.2 mm (0.99 in.)

2945	115.9	88350	19861	29450	6620	43.0	28.90	29.5	19.79	20	20	10
------	-------	-------	-------	-------	------	------	-------	------	-------	----	----	----

General belt tolerance is +0/-0.4% at 23°C/73°F and 50% RH. For exact belt width contact Customer Service. Non standard belt width on request.

*Max. Load per Drive Sprocket. Belt material: POM-DI 4000 N (899 lbf), PE-I 3000 N (674 lbf)

**Max. Spacing between wear strips, Carry: 152 mm (6 in.); Return: 304 mm (12 in.)

= Single Link



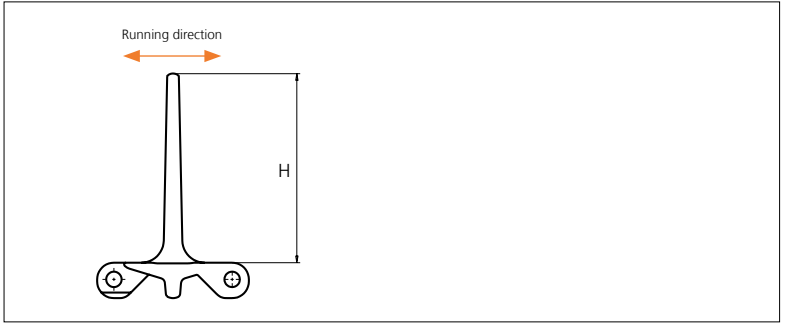
STANDARD

STRAIGHT RUNNING

PITCH 63.5 MM/2.50 IN

Accessories

Flight



Type	Material & color	H		Link size	Width		Indent	
		mm	in		mm	in	mm	in
Flat	POM-DI W	101.6	4.00	K600	151.0	5.94	0.0	0.00

Non Standard material and color: See uni Material and Color Overview.

Sprocket

No of teeth	Pilot Bore	Bore size												Overall diameter		Pitch-diameter		Hub-diameter		A-dimension		B-dimension		Single row/Two way	Double row/Two way	Molded PA6 LG	Machined PA6 N
		in	0.75	0.78	0.98	1.00	1.18	1.25	1.50	1.57	2.36	2.50	3.54														
		mm	19.1	20.0	25.0	25.4	30.0	31.8	38.1	40.0	60.0	63.5	90.0	mm	in	mm	in	mm	in	mm	in						
Z06	x					●	●	●	●				124.2	4.89	126.0	4.96	70.0	2.76	44.9	1.77	72.5	2.85	x	x			
Z08	x							●	●	●	●		165.6	6.52	164.6	6.48	70.0	2.76	66.6	2.62	92.0	3.62	x	x			
Z10	x							●	●	●	●	●	206.6	8.13	203.9	8.03	70.0	2.76	87.6	3.45	111.7	4.40	x	x			
Z13	x							●	●	●	●	●	267.8	10.54	265.3	10.44	150.0	5.91	118.7	4.67	141.7	5.58	x		x		

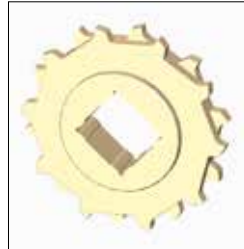
Molded sprocket



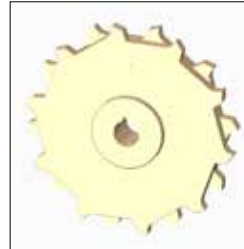
Machined sprocket



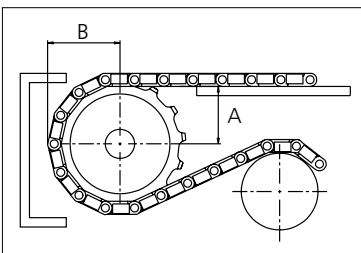
Molded sprocket



Machined sprocket



Non standard material and color: See uni Material and Color Overview.



Other sprocket sizes are available upon request.
 Two-part sprocket are available upon request.
 Round bores are always delivered with keyway.
 Other bore sizes are available upon request.
 uni Retainer Rings: See uni Retainer Ring data sheet.
 Width of tooth = 12.0 mm (0.47 in)
 Width of sprocket = 43.3 mm (1.67 in)

Max load per sprocket shown does not take bore size into account.
 Please also ensure that sufficient size shaft is chosen for corresponding load.

For correct sprocket position: See uni Assembly Instructions for uni X-MPB.
 For more detailed sprocket information, contact Customer Service.



Solid advice
 For all your belting needs
 Local stock & service
www.ammeraalbeltech.com

Ammeraal Beltech Modular A/S
 Hjulmagervej 21
 DK-7100 Vejle

T +45 7572 3100
 F +45 7572 3348
 admin@unichains.com
 www.unichains.com

This information is subject to alteration due to continuous development. Ammeraal Beltech will not be held liable for the incorrect use of the above stated information. This information replaces previous information. All activities performed and services rendered by Ammeraal Beltech are subject to general terms and conditions of sale and delivery, as applied by its operating companies.

Local Contacts

Austria

T +43 171728 133
info-de@ammeraalbeltech.com
www.ammeraalbeltech.at

Belgium

T +32 2 466 03 00
info-be@ammeraalbeltech.com
www.ammeraalbeltech.be

Canada

T +1 905 890 1311
info-ca@ammeraalbeltech.com
www.ammeraalbeltech.com

Chile

T +56 2 233 12900
info-cl@ammeraalbeltech.com
www.ammeraalbeltech.cl

China

T +86 512 8287 2709
info-cn@ammeraalbeltech.com
www.ammeraalbeltech.com.cn

Czech Republic

T +420 567 117 211
info-cz@ammeraalbeltech.com
www.ammeraalbeltech.cz

Denmark

T + 45 7572 3100
info-dk@ammeraalbeltech.com
www.unichains.com

Finland

T +358 207 911 400
info-fi@ammeraalbeltech.com
www.ammeraalbeltech.fi

France

T +33 3 20 90 36 00
info-fr@ammeraalbeltech.com
www.ammeraalbeltech.fr

Germany

T +49 4152 937-0
info-de@ammeraalbeltech.com
www.ammeraalbeltech.de

Hungary

T +36 30 311 6099
info-hu@ammeraalbeltech.com
www.ammeraalbeltech.hu

India

T +91 44 265 34 244
info-in@ammeraalbeltech.com
www.ammeraalbeltech.com

Italy

T +39 051 660 60 06
info-it@ammeraalbeltech.com
www.ammeraalbeltech.it

Luxembourg

T +352 26 48 38 56
info-lu@ammeraalbeltech.com
www.ammeraal-beltech.lu

Malaysia

T +60 3 806 188 49
info-my@ammeraalbeltech.com
www.ammeraalbeltech.com

Netherlands

T +31 72 57 51212
info-nl@ammeraalbeltech.com
www.ammeraalbeltech.nl

Poland

T +48 32 44 77 179
info-pl@ammeraalbeltech.com
www.ammeraalbeltech.com

Portugal

T +351 22 947 94 40
info-pt@ammeraalbeltech.com
www.ammeraalbeltech.pt

Singapore

T +65 62739767
info-sg@ammeraalbeltech.com
www.ammeraalbeltech.com

Slovakia

T +421 2 55648541-2
info-sk@ammeraalbeltech.com
www.ammeraalbeltech.sk

South Korea

T +82 31 448 3613-7
info-kr@ammeraalbeltech.com
www.ammeraalbeltech.co.kr

Spain

T +34 93 718 3054
info-es@ammeraalbeltech.com
www.ammeraalbeltech.es

Sweden

T +46 44 780 3010
info-se@ammeraalbeltech.com
www.ammeraalbeltech.se

Switzerland

T +41 55 2253 535
info-ch@ammeraalbeltech.com
www.ammeraalbeltech.ch

Thailand

T +66 2 902 2604-13
info-th@ammeraalbeltech.com
www.ammeraalbeltech.com

United Kingdom

T +44 1992 500550
info-uk@ammeraalbeltech.com
www.ammeraalbeltech.co.uk

United States

T +1 847 673 6720
info-us@ammeraalbeltech.com
www.ammeraalbeltech.com

Vietnam

T +84 8 376 562 05
info-vn@ammeraalbeltech.com
www.ammeraalbeltech.com.vn

Global Headquarters:

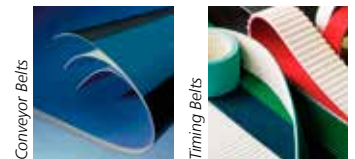
Ammeraal Beltech Holding B.V.

P.O. Box 38
1700 AA Heerhugowaard
The Netherlands

T +31 (0)72 575 1212
F +31 (0)72 571 6455

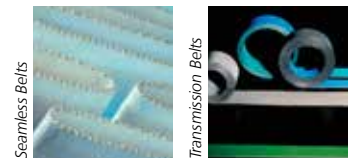
info@ammeraalbeltech.com
www.ammeraalbeltech.com

Expert advice, quality solutions
and local service
for all your belting needs



Conveyor Belts

Timing Belts



Seamless Belts

Transmission Belts



Modular Belts

Fabrication & service

... and 150 more service contact points on www.ammeraalbeltech.com